

## Custom Split Finish Program

For products not included in the Standard Split Finish Program, Newport Brass's Custom Split Finish Program allows for multiple finishes on most Newport Brass products.

Visit [www.newportbrass.com/products/finishes/custom-split-finish-program.aspx](http://www.newportbrass.com/products/finishes/custom-split-finish-program.aspx) for information on the Custom Split Finish Program.

### Step 1

#### Select the product to customize

Add the /SP suffix to the base part number when ordering a custom split finish. As an example, the part number for the Heaney faucet would be 3190-5113/SP.



### Step 2

#### Print the parts diagram

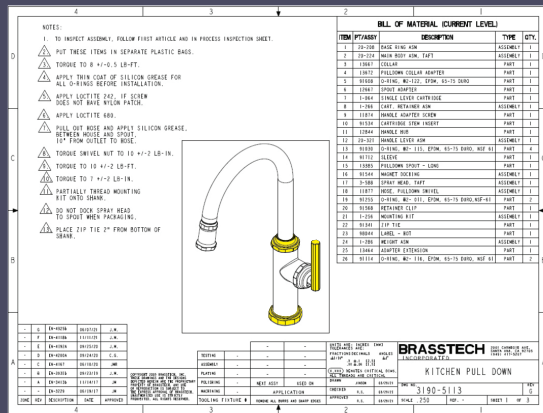
The Parts Diagram is located on the product detail page of the [newportbrass.com](http://newportbrass.com) website.



### Step 3

#### Designate finish

Using a highlighter, designate the secondary or accented components on the Parts Diagram. The components that are not highlighted will receive the primary or base finish.



### Step 4

#### Submit Order

Email the highlighted Parts Diagram and Purchase Order to [orderdesk1@brasstech.com](mailto:orderdesk1@brasstech.com). EDI orders can not be accepted. Customer will be notified if the custom configuration is not manufacturable.



3190-5113/SP



## Split Finish Programs Standard and Custom

3170-5103/56X24S





3190-5113/56X04

**Standard Split Finish Program\***

Newport Brass's Standard Split Finish Program makes it easy to realize your creative vision. Our design team has curated split finish templates for our top selling kitchen and lavatory faucets. On the Standard Split Finish template shown below the components shown in white receive the primary or base finish and the shaded components receive the secondary or accent finish making it easier than ever to create personalized fixtures.



Primary Finish  
Accent Finish

**Standard Split Finish Program\***

Popular styles are shown below.  
Visit [www.newportbrass.com/products/finishes/split-finishes.aspx](http://www.newportbrass.com/products/finishes/split-finishes.aspx) for a complete list of faucets available in the Standard Split Finish Program.

**How To Order**

First, select the model of choice and the preferred finish combination.

Next, email the order to [orderdesk1@brasstech.com](mailto:orderdesk1@brasstech.com) using part number nomenclature. (Base Part Number/Primary Finish X Accent Finish).



920/26X01

2970/15AX07

990/56X15S

1770/30X15

990/56X24S

1770/15SX10

920/56X04

2040/26X01

**Terms and Conditions**

Split Finish products are priced at the higher of the two selected finish price groups. Because each product is made-to-order, orders are non-cancellable and non-returnable. Finally, the warranty on Split Finish fixtures is the shorter of the two finish warranties selected.

\* Available on select kitchen and bath faucets only.