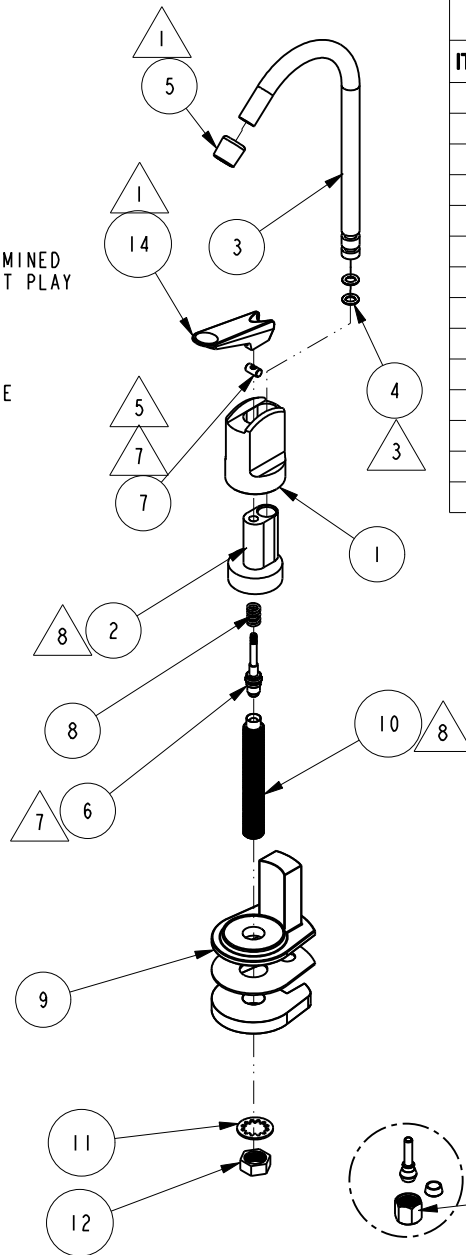


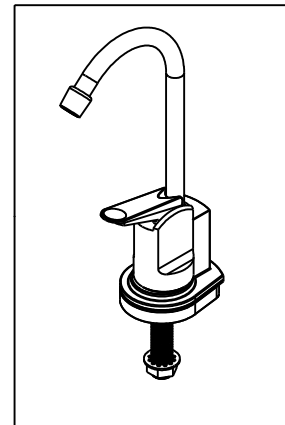
NOTES:

- 1 PART NO. HAS SUFFIX ' B ' OR ' W ' (BLACK OR WHITE).
- 2 BAG 5-007 IN A SEPARATE BAG.
- 3 APPLY DOW CORNING 111.
- 4 APPLY LOCTITE 680.
- 5 ASSEMBLY HEIGHT OF ITEM SHALL BE DETERMINED BY WATER TEST. HANDLE SHALL HAVE SLIGHT PLAY (MOVEMENT UP AND DOWN).
- 6 WATER TEST WHOLE UNIT.
- 7 AFTER ASSEMBLY, THE DISTANCE BETWEEN THE TOP SURFACE OF ITEM 7 AND TOP SURFACE OF ITEM 6 MUST BE BETWEEN .056 - .070
- 8 USE 45 IN .LBS TO INSTALL ITEM # 10 ONTO ITEM # 2



BILL OF MATERIAL (CURRENT LEVEL)

ITEM	PT/ASSY	DESCRIPTION	TYPE	QTY.
1	50874	BODY COVER	PART	1
2	50875	PLASTIC INSERT	PART	1
3	50058	SPOUT	PART	1
4	91099	O-RING, #2- 009, EPDM, 65-75 DURO, NSF-61	PART	2
5	50061	SPOUT TIP	PART	1
6	5-003	VALVE STEM ASM	ASSEMBLY	1
7	50074	T-BAR	PART	1
8	50071	COMPRESSION SPRING	PART	1
9	105-4B	FLANGE	ASSEMBLY	1
10	50062	NIPPLE	PART	1
11	50064	WSHR, .450 ID X .750 OD X .036 THK, INT. TOOTH, LOCK ,STL	PART	1
12	50065	7/16-24 NUT	PART	1
13	5-007	1/4 COMP KIT	ASSEMBLY	1
14	50060	HANDLE	PART	1



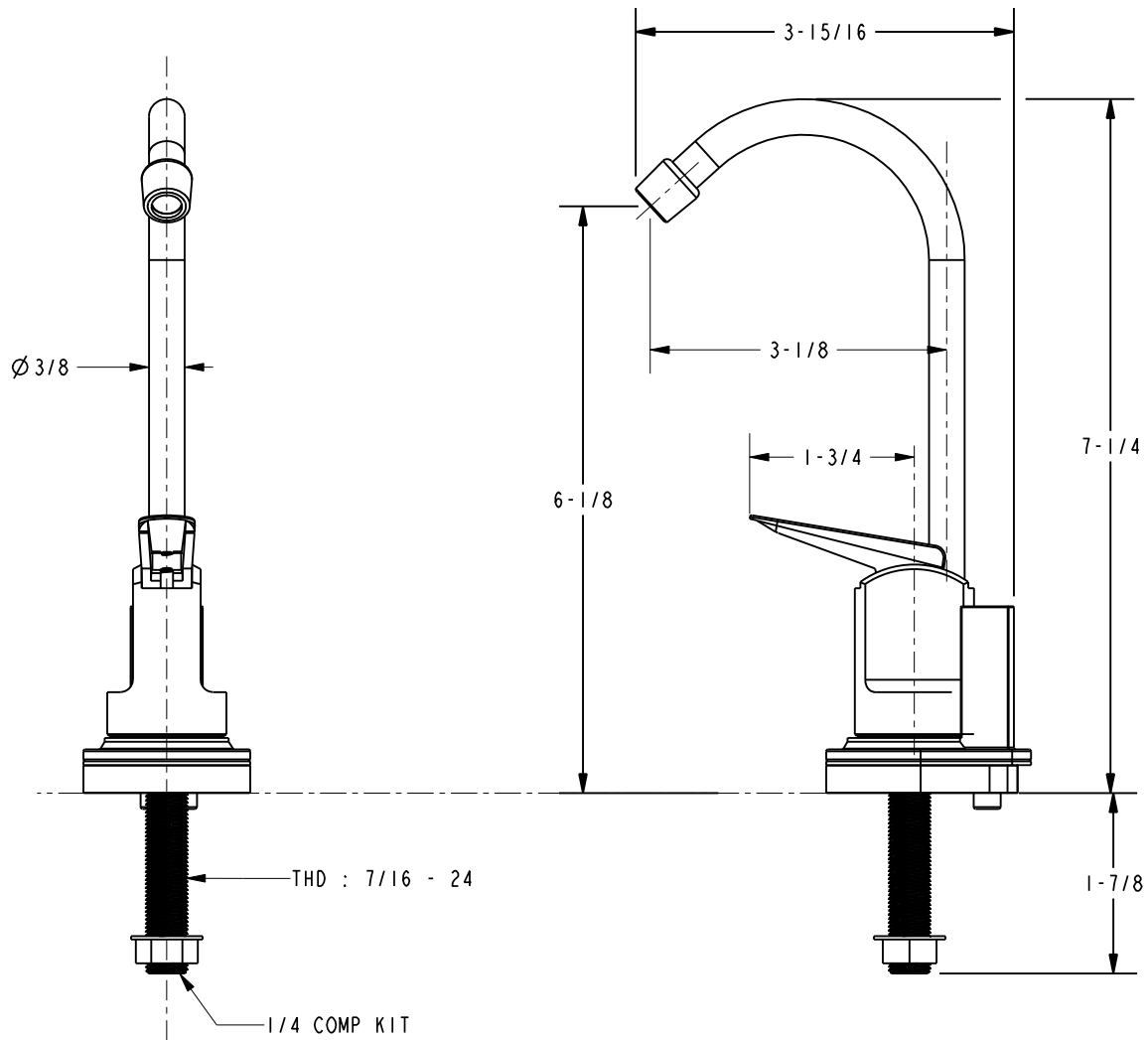
COPYRIGHT 2005 BRASSTECH, INC. THESE DRAWINGS AND THE DESIGNS DEPICTED HEREIN ARE THE PROPRIETARY PROPERTY OF BRASSTECH. ANY USE OR REPRODUCTION IS SUBJECT TO THE EXPRESS APPROVAL OF BRASSTECH. UNAUTHORIZED USE IS STRICTLY PROHIBITED. ALL RIGHTS RESERVED.

**BRASSTECH**  
INCORPORATED  
2001 E. CARNEGIE AVE.  
SANTA ANA, CA 92705  
(949) 417-5207

WATER DISPENSER FAUCET

ASSY. NO.	104B	A	EN-2816	10/07/14
SCALE .250	REF. -	-	EN-2601	09/20/19
SHEET 1 OF 2	REV	REV DESC	DATE	

**SPECIFICATION DWG**



DIMENSIONS ARE IN INCHES AND AN APPROXIMATION OF A TYPICAL INSTALLATION

COPYRIGHT 2005 BRASSTECH, INC. THESE DRAWINGS AND THE DESIGNS DEPICTED HEREIN ARE THE PROPRIETARY PROPERTY OF BRASSTECH. ANY USE OR REPRODUCTION IS SUBJECT TO THE EXPRESS APPROVAL OF BRASSTECH. UNAUTHORIZED USE IS STRICTLY PROHIBITED. ALL RIGHTS RESERVED.

<b>BRASSTECH</b>		2001 CARNEGIE AVE. SANTA ANA, CA 92705 (949) 417-5207	
DWG NO.	104B	REV	A
SCALE	.500	REF.	-
		SHEET	2 OF 2