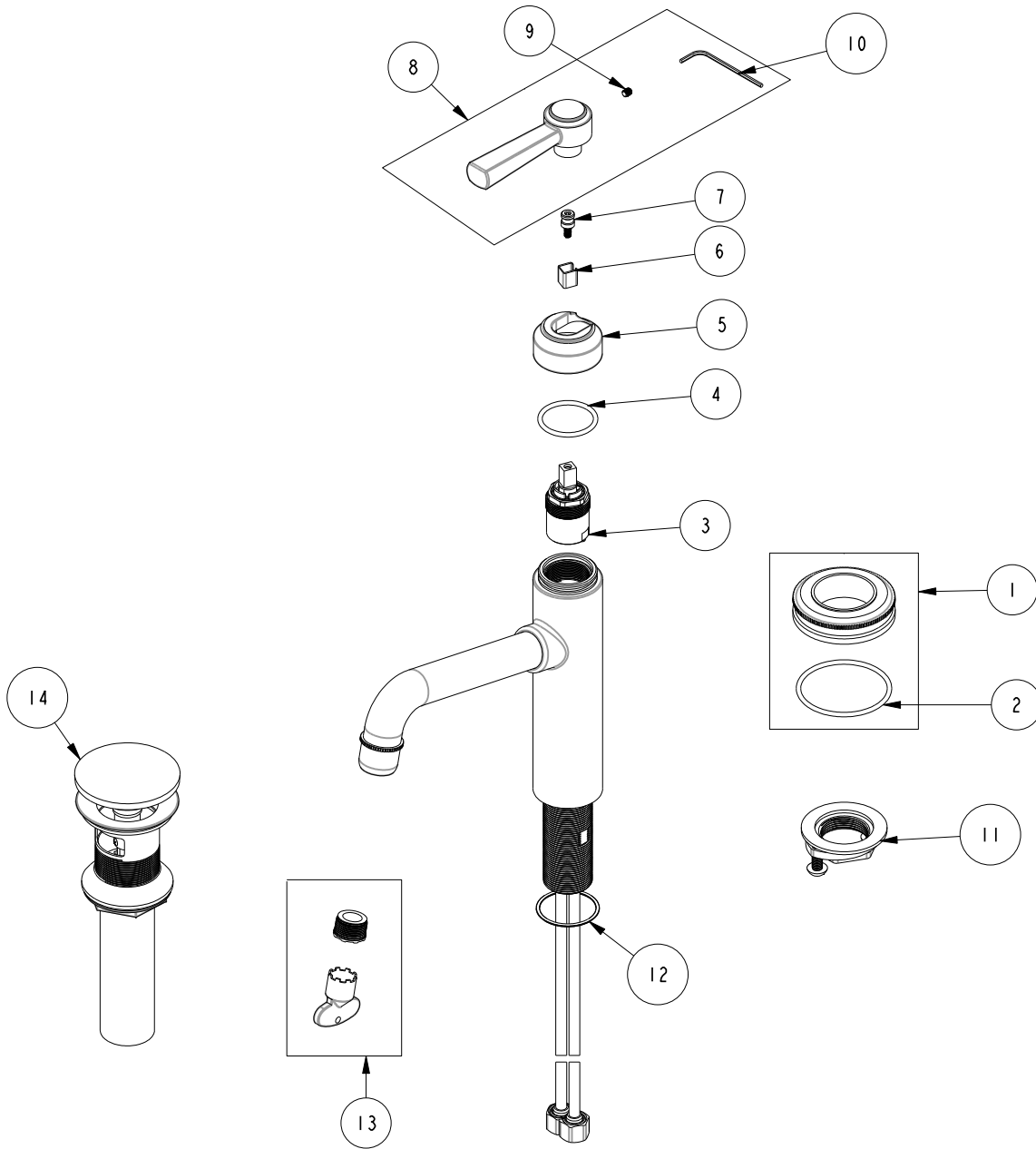


# REPLACEMENT PARTS

ITEM	PT/ASSY	SPECIFY FINISH	DESCRIPTION
1	20-263	YES	ESCUTCHEON ASM
2	91753		O-RING, # 2-136, EP, 50 DURO - GREY
3	1-371		CARTRIDGE
4	91505		O-RING, #2-123, EPDM, 65-75 DURO
5	13884	YES	HANDLE HUB, CONTEMP
6	91534		CARTRIDGE STEM INSERT
7	11874		HANDLE ADAPTER SCREW
8	20-721	YES	HANDLE LEVER ASM.
9	92001		SCRW, 8-32 X 3/16 SKT HD FLT PT SS
10	10192		HEX KEY TOOL, #8 5/64
11	1-393		1-1/8 18 UNEF MOUNTING KIT
12	91764		O-RING, #2-027, EP, 50 DURO - GREY
13	1-492		AERATOR 1.2 GPM WITH KEY
14	330	YES	DRAIN, PUSH DOWN, W/ OVERFLOW



**SINGLE HOLE FAUCET  
1623-1**

REV - EN-4726 10/19/23 APPROVED RS

**NEWPORT BRASS.**

t: 949.417.5207 | www.newportbrass.com