

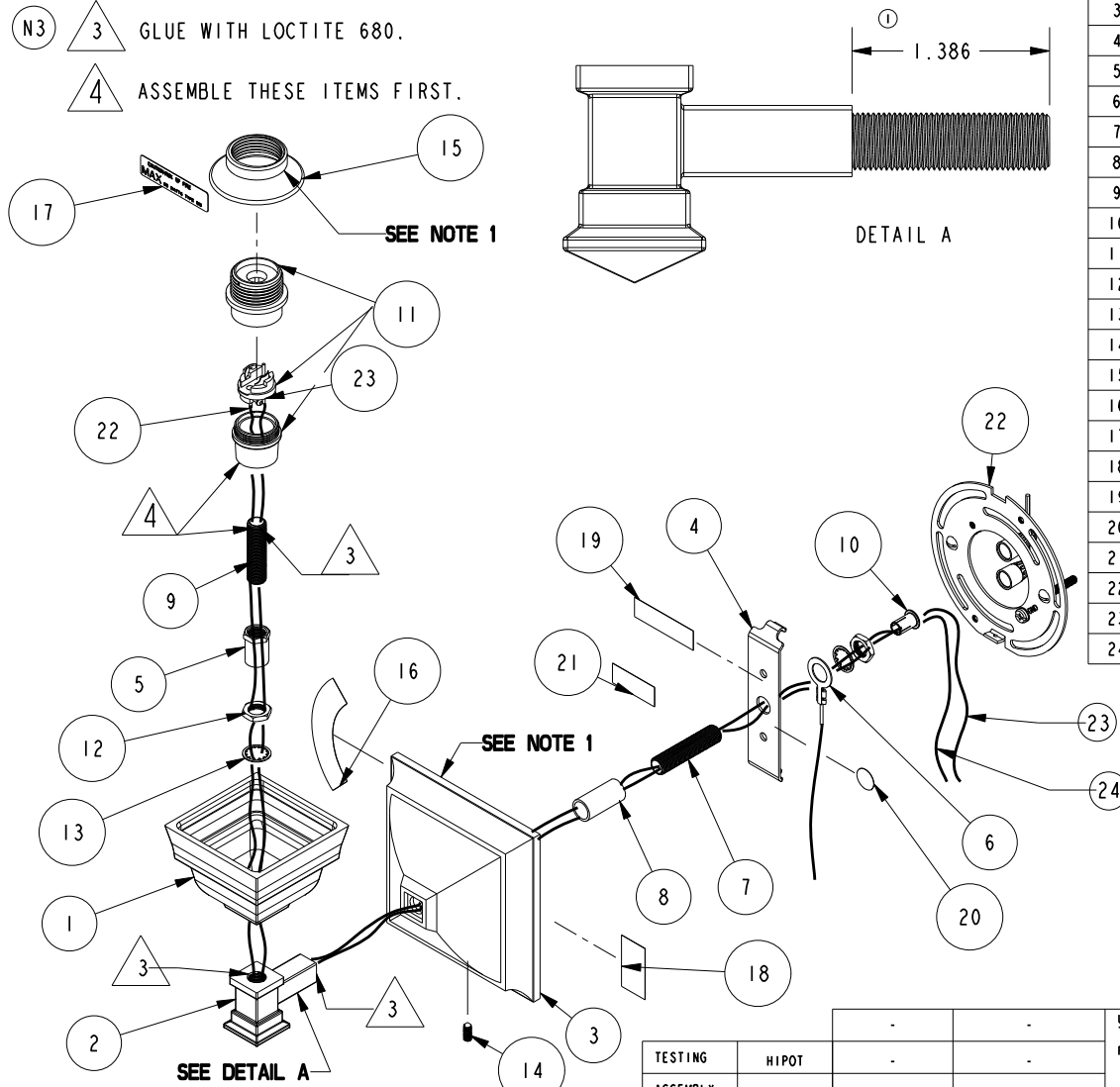


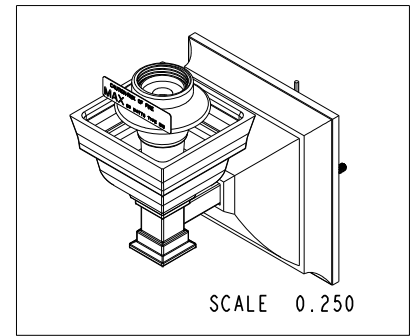
NOTES:

- (N1) 1. FIT / FORM / FUNCTION SHALL FOLLOW PS-E.008.
- (N2) 2. PN'S 40090, 92133 & 40095 REQUIRE LABELS. SEE SHT 2 FOR LOCATIONS.
- (N3)  3 GLUE WITH LOCTITE 680.
-  4 ASSEMBLE THESE ITEMS FIRST.



BILL OF MATERIAL (CURRENT LEVEL)

ITEM	PT/ASSY	DESCRIPTION	TYPE	QTY.
1	40072	SQUARE HOLDER	PART	1
2	40080	ARM - SINGLE	PART	1
3	40090	BACK PLATE	PART	1
4	40095	MOUNTING STRAP	PART	1
5	40107	LIGHT FIXTURE NUT	PART	1
6	40116	WIRE 8" - GROUND W/LUG	PART	1
7	40117	ALL-THREAD-HOLLOW 1-3/4 IN	PART	1
8	40119	SPACER 1/2 X 1.065	PART	1
9	40144	NIPPLE - BRASS 1-1/2 -1/8 IPS	PART	1
10	91291	BUSHING - PLASTIC	PART	1
11	91299	SOCKET ASM	ASSEMBLY	1
12	92120	NUT LCK, 1/8" IPS-BRASS	PART	2
13	92121	WSHR, .41 ID X .60 OD X .032 THK, INT. TOOTH LOCK, BRASS	PART	2
14	92122	SCRW, 8-32 X 1/2 SKT HD CONE PT BLACK ALLOY	PART	1
15	92133	RETAINING NUT	PART	1
16	98002	LABEL, SUITABLE/CONNECT/120V	PART	1
17	98004	LABEL, CAUTION: TO REDUCE RISK	PART	1
18	98006	LABEL, UL LISTED	PART	1
19	98012	LABEL, WALL MOUNT ONLY	PART	1
20	98021	ITEM #19-51	PART	1
21	98079	LABEL, MONTH YEAR E222146	PART	1
22	7-003	KIT HDW WALL MOUNT	ASSEMBLY	1
23	91301	WIRE - BLACK	PART	1.5'
24	91302	WIRE - WHITE	PART	1.5'



TESTING	HIPOT	-	-
ASSEMBLY	-	-	-
PLATING	-	19-51SC	19-51SC
POLISHING	-	NEXT ASSY	USED ON
MACHINING	-	APPLICATION	
TOOLING FIXTURE #	REMOVE ALL BURRS AND SHARP EDGES		

UNITS ARE: INCHES [MM]  
 TOLERANCES ARE:  
 FRACTIONS DECIMALS ANGLES  
 ±1/16" .X ±.1 [2.5] ±1°  
 .XX ±.06 [1.5]  
 (X.XXX) DENOTES CRITICAL DIMS.  
 ALL THREADS ARE CRITICAL  
 DRAWN

**BRASSTECH** 2001 CARNEGIE AVE.  
 INCORPORATED SANTA ANA, CA 92705  
 (949) 417-5207

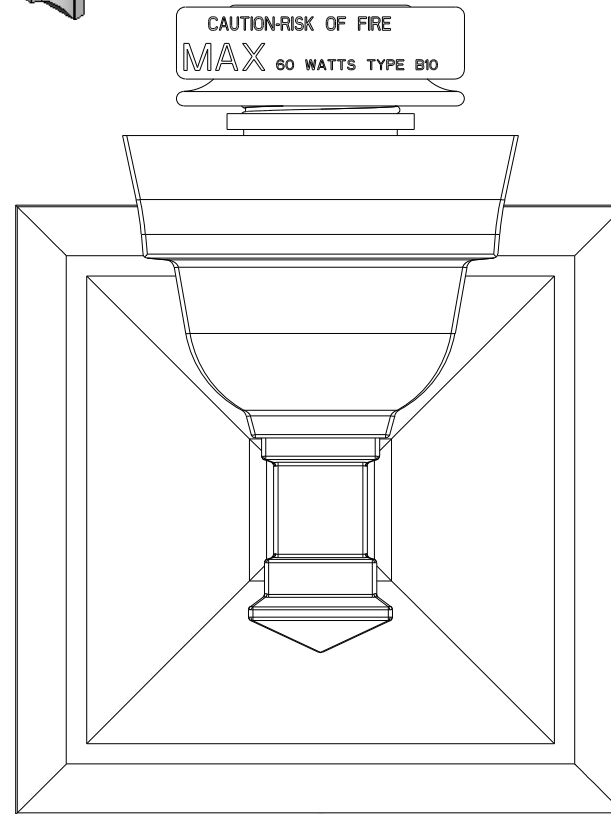
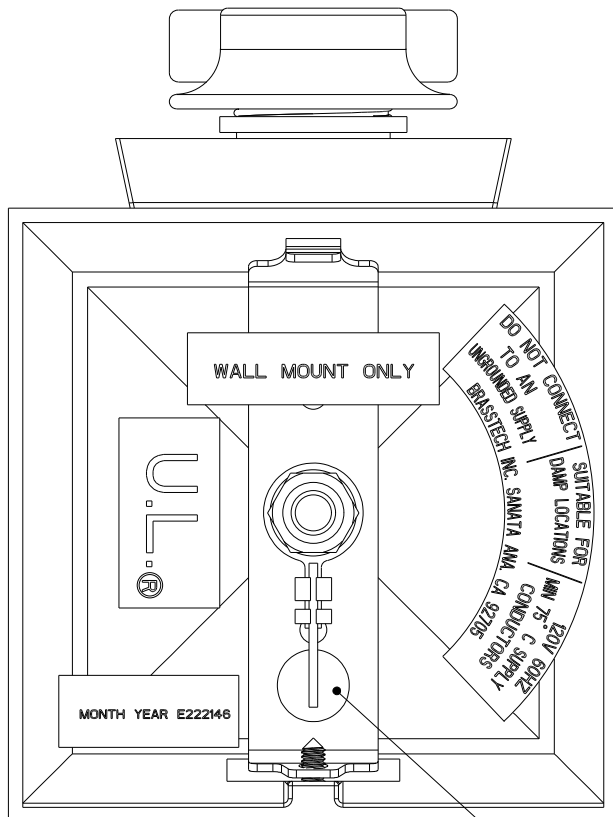
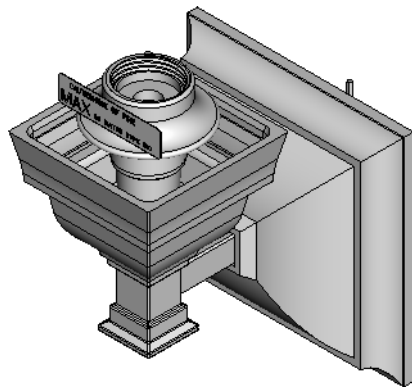
LUM SQ SGL W/O SHADE

DWG NO. 19-51 REV E

SCALE 0.250 REF. - SHEET 1 OF 2

-	E	EN-2661	04/17/15	J.M.
-	D	EN-2455	02/14/13	-
ZONE	REV	DESCRIPTION	DATE	APPROVED

COPYRIGHT 2005 BRASSTECH, INC.  
 THESE DRAWINGS AND THE DESIGNS  
 DEPICTED HEREIN ARE THE PROPRIETARY  
 PROPERTY OF BRASSTECH. ANY USE  
 OR REPRODUCTION IS SUBJECT TO  
 THE EXPRESS APPROVAL OF BRASSTECH.  
 UNAUTHORIZED USE IS STRICTLY  
 PROHIBITED. ALL RIGHTS RESERVED.



LABEL 98021

ITEM #19-51

<b>BRASSTECH</b>		2001 E. CARNEGIE AVE.
INCORPORATED		SANTA ANA, CA 92705
		(949) 417-5207
DWG NO.	19-51	REV E
SCALE 0.750	REF. -	SHEET 2 OF 2