

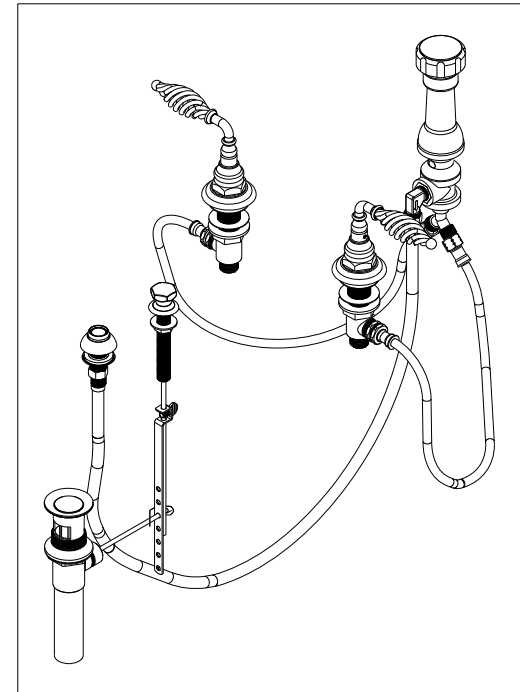
BILL OF MATERIAL (CURRENT LEVEL)

| ITEM | PT/ASSY | DESCRIPTION | TYPE | QTY. |
|---------------|------------------|----------------------------------|----------|------|
| 1 | 10048 | ESCUTCHEON W/S VALVE | PART | 2 |
| 2 | 2-159 | POP-UP ROD GUIDE ASSEMBLY | ASSEMBLY | 1 |
| 3 | 2-235 | BIDET DIVERTER / V. BRE | ASSEMBLY | 1 |
| 4 | 2-236 | DOUCHE SPRAY ASSEMBLY | ASSEMBLY | 1 |
| 5 | 10138 | HEX KNOB | PART | 1 |
| 6 | 10288 | 3/16" POP UP ROD | PART | 1 |
| 7 | 325 | POP UP ASSEMBLY | ASSEMBLY | 1 |
| 8 | 1-542 | VALVE KIT - BIDET | ASSEMBLY | 1 |
| 9 | 10523 | HEX ESCUTCHEON BONNET | PART | 2 |
| 10 | 2-108 | TWIST HANDLE ASM | ASSEMBLY | 2 |
| 11 | 91231 | O-RING, #2-136, EPDM, 65-75 DURO | PART | 2 |

91753

98093 LABEL

1



REV B EN-3722 02/08/2019 CG

COPYRIGHT 2005 BRASSTECH, INC. THESE DRAWINGS AND THE DESIGNS DEPICTED HEREIN ARE THE PROPRIETARY PROPERTY OF BRASSTECH. ANY USE OR REPRODUCTION IS SUBJECT TO THE EXPRESS APPROVAL OF BRASSTECH. UNAUTHORIZED USE IS STRICTLY PROHIBITED. ALL RIGHTS RESERVED.

BRASSTECH
INCORPORATED

2001 E. CARNEGIE AVE.
SANTA ANA, CA 92705
(949) 417-5207

BIDET SET

ASSY. NO.
2109

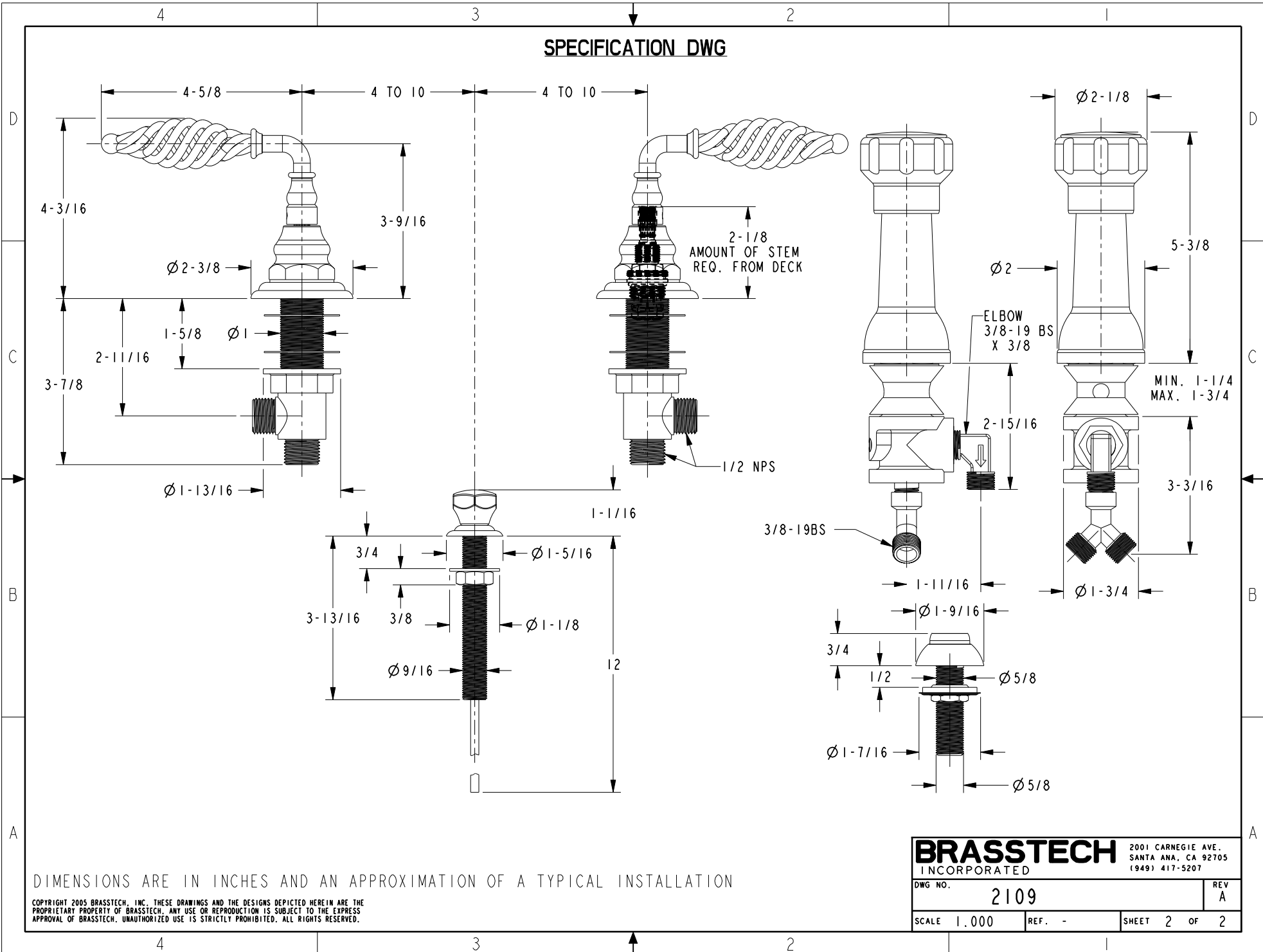
SCALE .190

REF. -

SHEET 1 OF 2

| | | |
|-----|----------|----------|
| A | EN-2334 | 12/28/12 |
| - | RELEASED | PRE '95 |
| REV | REV DESC | DATE |

SPECIFICATION DWG



DIMENSIONS ARE IN INCHES AND AN APPROXIMATION OF A TYPICAL INSTALLATION

COPYRIGHT 2005 BRASSTECH, INC. THESE DRAWINGS AND THE DESIGNS DEPICTED HEREIN ARE THE PROPRIETARY PROPERTY OF BRASSTECH. ANY USE OR REPRODUCTION IS SUBJECT TO THE EXPRESS APPROVAL OF BRASSTECH. UNAUTHORIZED USE IS STRICTLY PROHIBITED. ALL RIGHTS RESERVED.

| | | | |
|------------------|-------|---|---|
| BRASSTECH | | 2001 CARNEGIE AVE. SANTA ANA, CA 92705 (949) 417-5207 | |
| DWG NO. | 2109 | REV | A |
| SCALE | 1,000 | REF. | - |
| SHEET | 2 | OF | 2 |