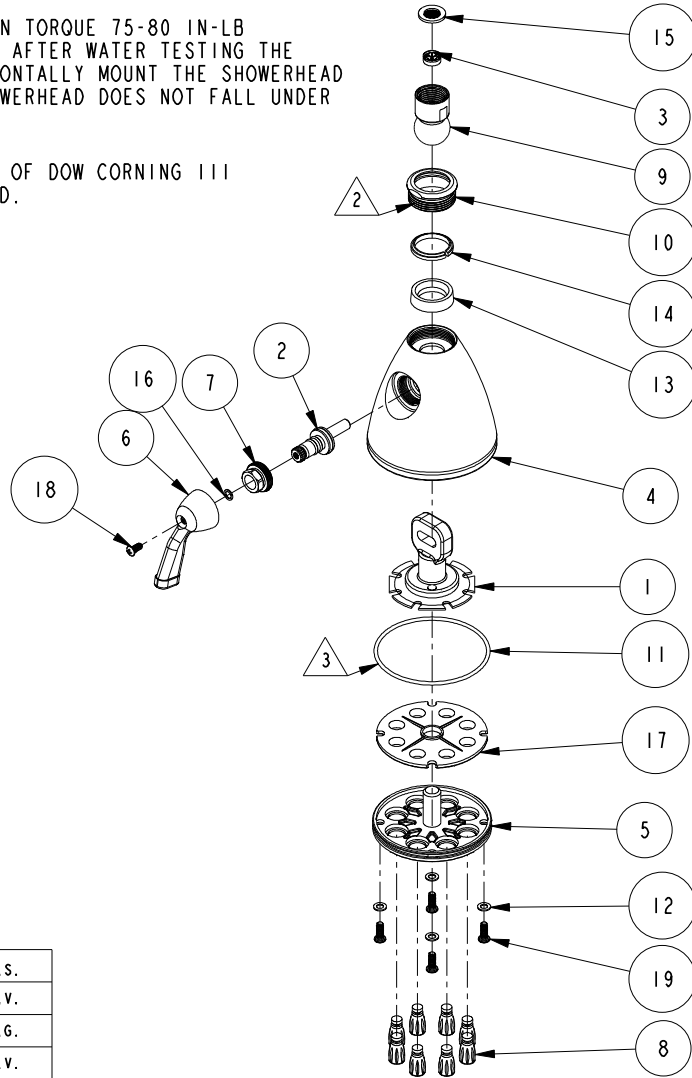


NOTES:

1. TO INSPECT ASSEMBLY, FOLLOW FIRST ARTICLE AND IN PROCESS INSPECTION SHEET.

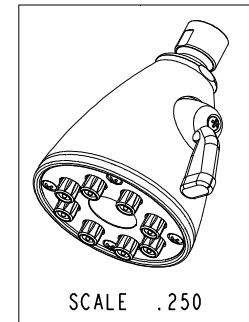
2 APPLY INSTALLATION TORQUE 75-80 IN-LB (6.25-6.67 FT-LB) AFTER WATER TESTING THE SHOWERHEAD. HORIZONTALLY MOUNT THE SHOWERHEAD TO ENSURE THE SHOWERHEAD DOES NOT FALL UNDER ITS OWN WEIGHT.

3 APPLY LIGHT FILM OF DOW CORNING 111 SILICONE COMPOUND.



BILL OF MATERIAL (CURRENT LEVEL)

ITEM	PT/ASSY	DESCRIPTION	TYPE	QTY.
1	5-001	SPRAY TIP MTG PLATE	ASSEMBLY	1
2	5-037	STEM ASM	ASSEMBLY	1
3	12833	FLOW REGULATOR, 1.8 GPM MAX	PART	1
4	13441	BODY SHOWER HEAD	PART	1
5	13442	FACE PLATE	PART	1
6	50158	HANDLE LEVER	PART	1
7	50159	PACKING NUT	PART	1
8	50163	SPRAY TIP	PART	8
9	50891	PIVOT BALL	PART	1
10	50892	COLLAR NUT	PART	1
11	91074	O-RING, 2.5 X 77MM ID, EPDM, 65-75 DURO	PART	1
12	91147	WSHR, .20 ID X .36 OD X .03 THK, RUBBER	PART	4
13	91152	WSHR, .801 ID X 1.196 OD X .32 THK, CONCAVE PB	PART	1
14	91523	BEARING RING, PLASTIC	PART	1
15	91606	GASKET W/ FILTER SCREEN	PART	1
16	91779	WSHR, .220 ID X .315 OD X .030 THK, FLT, ACETAL	PART	1
17	91795	DIFFUSER DISK	PART	1
18	92039	SCRW, 10-24 X 7/16 PHIL OVL HD BRASS	PART	1
19	92040	SCRW, 10-24 X 1/2 PHIL W/.320 DIA ROUND HD BRS	PART	4



-	J	EN-4300w	03/10/21	R.S.
-	H	EN-4168a	07/13/20	V.V.
-	G	EN-3999	10/17/19	C.G.
-	F	EN-3825	03/11/19	V.V.
-	E	EN-3410	12/28/17	C.G.
-	D	EN-1924	12/02/11	-
-	C	EN-1668C	05/20/11	-
-	B	EO-0518	06/09/05	-
-	A	VENDER CHANGE	06/00	-
-	-	RELEASED	PRE '95	-
ZONE	REV	DESCRIPTION	DATE	APPROVED

COPYRIGHT 2005 BRASSTECH, INC. THESE DRAWINGS AND THE DESIGNS DEPICTED HEREIN ARE THE PROPRIETARY PROPERTY OF BRASSTECH. ANY USE OR REPRODUCTION IS SUBJECT TO THE EXPRESS APPROVAL OF BRASSTECH. UNAUTHORIZED USE IS STRICTLY PROHIBITED. ALL RIGHTS RESERVED.

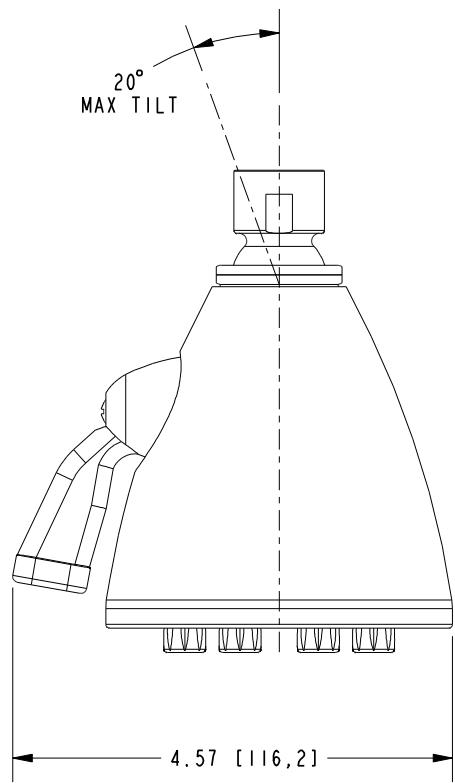
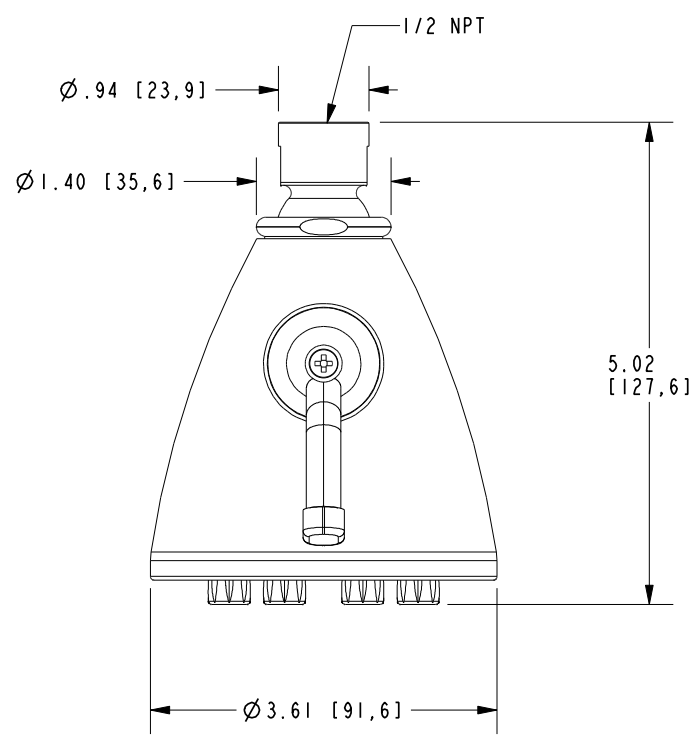
TESTING	-	-	-
ASSEMBLY	-	-	-
PLATING	-	-	-
POLISHING	-	NEXT ASSY	USED ON
MACHINING	-	APPLICATION	
TOOLING FIXTURE #	REMOVE ALL BURRS AND SHARP EDGES		

UNITS ARE: INCHES [MM]			
TOLERANCES ARE:			
FRACTIONS	DECIMALS	ANGLES	
±1/16"	.X ±.1 [2.5]	±1°	
	.XX ±.06 [1.5]		
(X.XXX) DENOTES CRITICAL DIMS. ALL THREADS ARE CRITICAL			
DRAWN	JINSON	10/17/19	
CHECKED	C.G.	10/17/19	
APPROVED	C.G.	10/17/19	

BRASSTECH		2001 CARNEGIE AVE. SANTA ANA, CA 92705 (949) 417-5207	
INCORPORATED			
LG SHWRHEAD 3-1/2"			
DWG NO.		REV	
211		J	
SCALE	REF.	SHEET	OF
.187	-	1	2

4 3 2 1

D
C
B
A



4 3 2 1

BRASSTECH		2001 E. CARNEGIE AVE. SANTA ANA, CA 92705 (949) 417-5207	
DWG NO.	211	REV	J
SCALE	.500	REF.	-
		SHEET	2 OF 2