

NOTES:

1. TO INSPECT ASSEMBLY, FOLLOW FIRST ARTICLE AND IN PROCESS INSPECTION SHEET.

2. APPLY LIGHT FILM OF SUPPER LUBE GREASE OR EQUIVALENT.

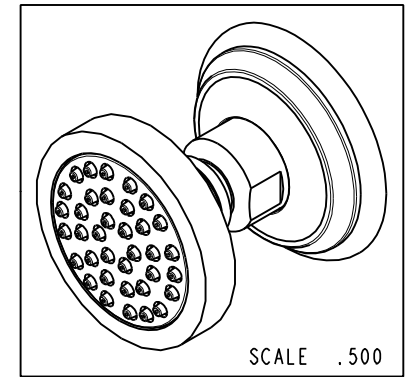
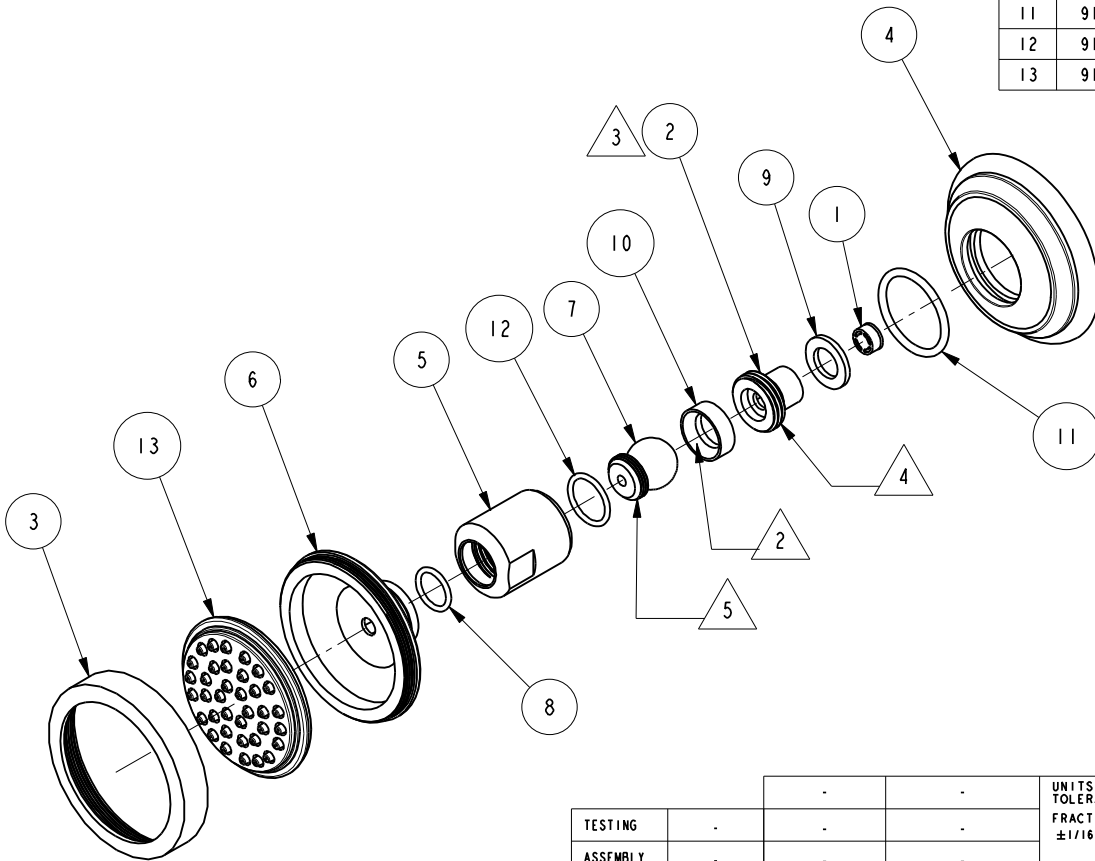
3. USE A 17 LB/IN TORQUE TO INSTALL.

4. APPLY LOCTITE 242.

5. APPLY ADHESIVE LOCTITE 680 OR EQUIVALENT.

BILL OF MATERIAL (CURRENT LEVEL)

ITEM	PT/ASSY	DESCRIPTION	TYPE	QTY.
1	11599	FLOW REGULATOR, 1.75 GPM, LIGHT BLUE	PART	1
2	11688	BODY SPRAY RETAINER	PART	1
3	11689	BODY SPRAY FACE PLATE	PART	1
4	11690	BODY SPRAY ESCUTCHEON	PART	1
5	11691	BODY SPRAY COLLAR	PART	1
6	11692	BODY SPRAY SHELL	PART	1
7	50199	PIVOT BALL	PART	1
8	91019	O-RING, #2- 014, EPDM, 65-75 DURO, NSF 61	PART	1
9	91153	WSHR .438 X .738	PART	1
10	91160	WSHR, .5 ID X .74 OD X .25 THK, CONCAVED, RUBBER	PART	1
11	91259	O-RING, #2-121, EPDM, 65-75 DURO	PART	1
12	91432	O-RING, #2-016, PTFE, D55 DURO	PART	1
13	91520	JET SPRAY FACE PLATE	PART	1



TESTING	-	-	-
ASSEMBLY	-	-	-
PLATING	-	-	-
POLISHING	-	NEXT ASSY	USED ON
MACHINING	-	APPLICATION	
TOOLING FIXTURE #	REMOVE ALL BURRS AND SHARP EDGES		

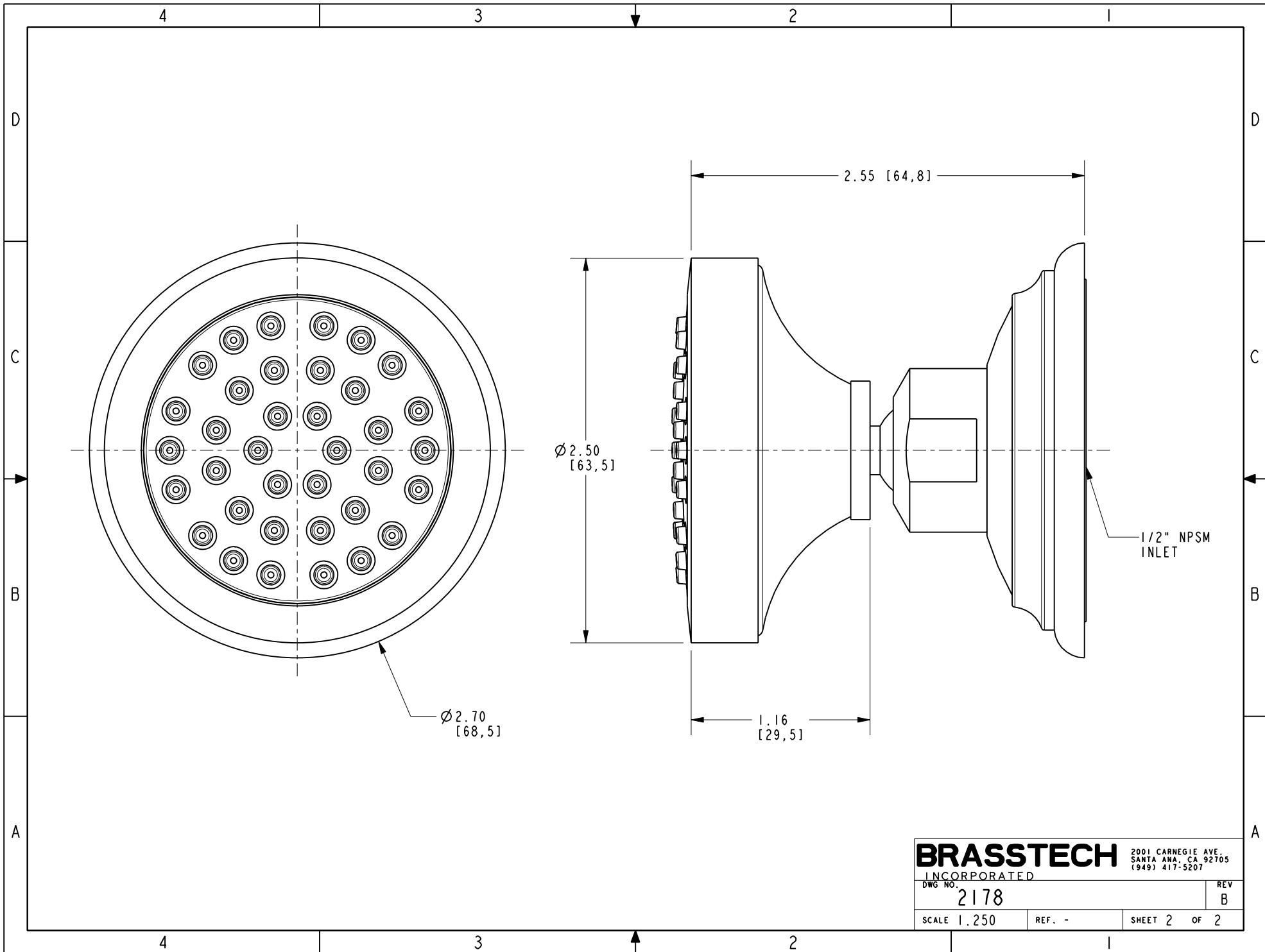
UNITS ARE: INCHES [MM]		
TOLERANCES ARE:		
FRACTIONS	DECIMALS	ANGLES
±1/16"	.X ±.1 [2.5]	±°
	.XX ±.06 [1.5]	
X.XXX DENOTES CRITICAL DIMS.		
ALL THREADS ARE CRITICAL		
DRAWN	JINSON	01/07/21
CHECKED	R.S.	01/07/21
APPROVED	R.S.	01/07/21

BRASSTECH 2001 CARNEGIE AVE.
INCORPORATED SANTA ANA, CA 92705
(949) 417-5207

SHOWER BODY SPRAY - TRAD.

-	B	EN-4300d	01/07/21	R.S.	COPYRIGHT 2005 BRASSTECH, INC. THESE DRAWINGS AND THE DESIGNS DEPICTED HEREIN ARE THE PROPRIETARY PROPERTY OF BRASSTECH. ANY USE OR REPRODUCTION IS SUBJECT TO THE EXPRESS APPROVAL OF BRASSTECH. UNAUTHORIZED USE IS STRICTLY PROHIBITED. ALL RIGHTS RESERVED.
-	A	EN-2768	06/19/14	-	
-	-	EN-1421	07/29/10	-	
ZONE	REV	DESCRIPTION	DATE	APPROVED	

DWG NO.	2178	REV	B
SCALE	.400	REF.	-
SHEET	1	OF	2



BRASSTECH		2001 CARNEGIE AVE. SANTA ANA, CA 92705 (949) 417-5207	
INCORPORATED			
DWG NO.	2178	REV	B
SCALE 1.250	REF. -	SHEET 2 OF 2	