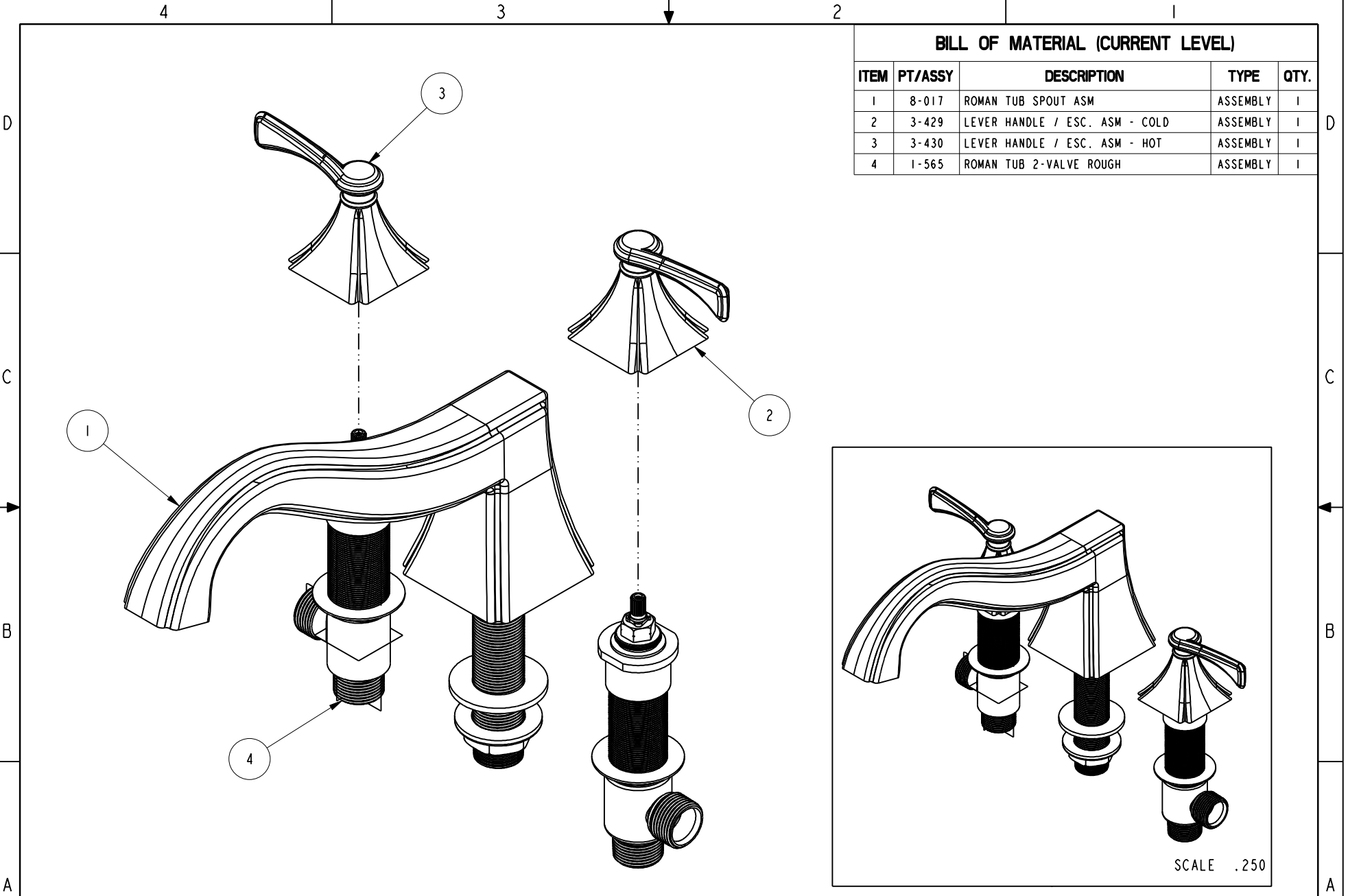


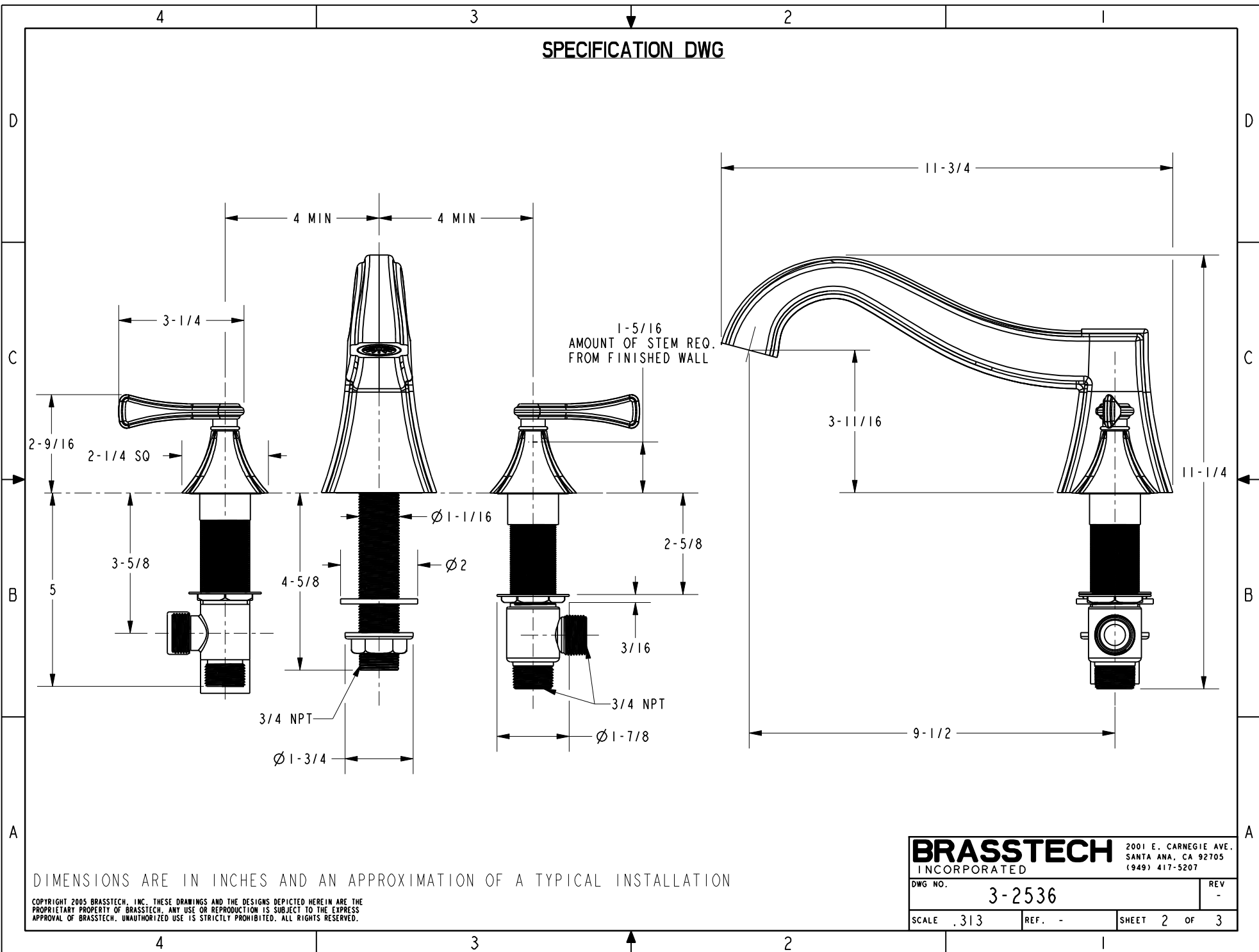
BILL OF MATERIAL (CURRENT LEVEL)				
ITEM	PT/ASSY	DESCRIPTION	TYPE	QTY.
1	8-017	ROMAN TUB SPOUT ASM	ASSEMBLY	1
2	3-429	LEVER HANDLE / ESC. ASM - COLD	ASSEMBLY	1
3	3-430	LEVER HANDLE / ESC. ASM - HOT	ASSEMBLY	1
4	1-565	ROMAN TUB 2-VALVE ROUGH	ASSEMBLY	1



COPYRIGHT 2005 BRASSTECH, INC. THESE DRAWINGS AND THE DESIGNS DEPICTED HEREIN ARE THE PROPRIETARY PROPERTY OF BRASSTECH. ANY USE OR REPRODUCTION IS SUBJECT TO THE EXPRESS APPROVAL OF BRASSTECH. UNAUTHORIZED USE IS STRICTLY PROHIBITED. ALL RIGHTS RESERVED.

BRASSTECH INCORPORATED <small>2001 E. CARNEGIE AVE. SANTA ANA, CA 92705 (949) 417-5207</small>	R/T WITH LEVER HANDLES	ASSY. NO. 2536		-	-
		SCALE .375	REF. -	SHEET 1 OF 3	REV EN-1735 06/10/11
				REV	DATE

SPECIFICATION DWG



DIMENSIONS ARE IN INCHES AND AN APPROXIMATION OF A TYPICAL INSTALLATION

COPYRIGHT 2005 BRASSTECH, INC. THESE DRAWINGS AND THE DESIGNS DEPICTED HEREIN ARE THE PROPRIETARY PROPERTY OF BRASSTECH. ANY USE OR REPRODUCTION IS SUBJECT TO THE EXPRESS APPROVAL OF BRASSTECH. UNAUTHORIZED USE IS STRICTLY PROHIBITED. ALL RIGHTS RESERVED.

BRASSTECH		2001 E. CARNEGIE AVE. SANTA ANA, CA 92705 (949) 417-5207	
DWG NO.	3-2536	REV	-
SCALE	.313	REF.	-
		SHEET	2 OF 3