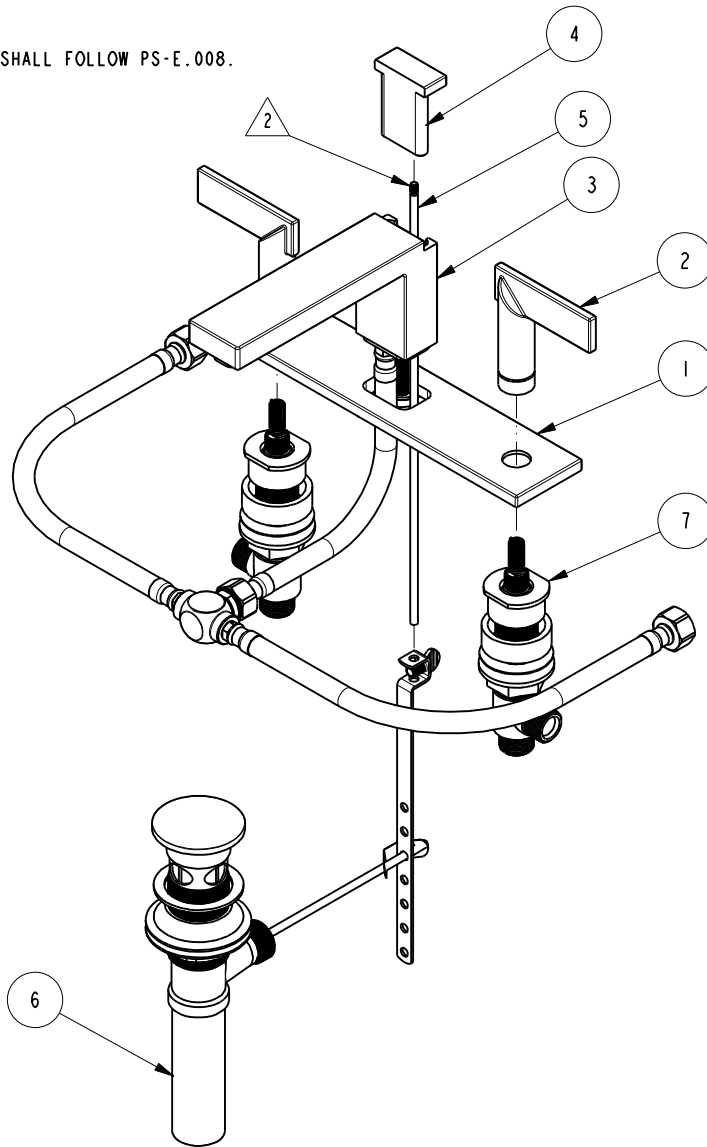


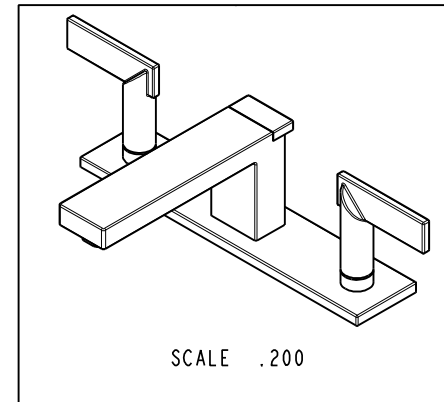
NOTES:

- 1. FIT / FORM / FUNCTION SHALL FOLLOW PS-E.008.
- 2. APPLY LOCTITE 680.



BILL OF MATERIAL (CURRENT LEVEL)

ITEM	PT/ASSY	DESCRIPTION	TYPE	QTY.
1	8-027	WIDESPREAD DECK PLATE ASM	ASSEMBLY	1
2	20-300	LEVER ASM	ASSEMBLY	2
3	2-795	WIDESPREAD SPOUT ASM	ASSEMBLY	1
4	80030	POP UP KNOB	PART	1
5	10288	3/16" POP UP ROD	PART	1
6	325	POP UP ASSEMBLY	ASSEMBLY	1
7	1-676	W/S VALVE INSTALLATION	ASSEMBLY	1



ZONE	REV	DESCRIPTION	DATE	APPROVED
-	E	EN-3334	01/04/18	J.A.
-	D	EN-2541-1	09/05/14	-
-	C	EN-2120	04/05/12	-
-	B	EN-1913	02/29/12	-
-	A	EN-1512	11/09/11	-
-	-	EN-1735	06/10/11	-

COPYRIGHT 2005 BRASSTECH, INC. THESE DRAWINGS AND THE DESIGNS DEPICTED HEREIN ARE THE PROPRIETARY PROPERTY OF BRASSTECH. ANY USE OR REPRODUCTION IS SUBJECT TO THE EXPRESS APPROVAL OF BRASSTECH. UNAUTHORIZED USE IS STRICTLY PROHIBITED. ALL RIGHTS RESERVED.

TESTING	ASSEMBLY	PLATING	POLISHING	MACHINING	TOOLING FIXTURE #	APPLICATION
-	-	-	-	-	-	REMOVE ALL BURRS AND SHARP EDGES
-	-	-	-	-	-	NEXT ASSY USED ON

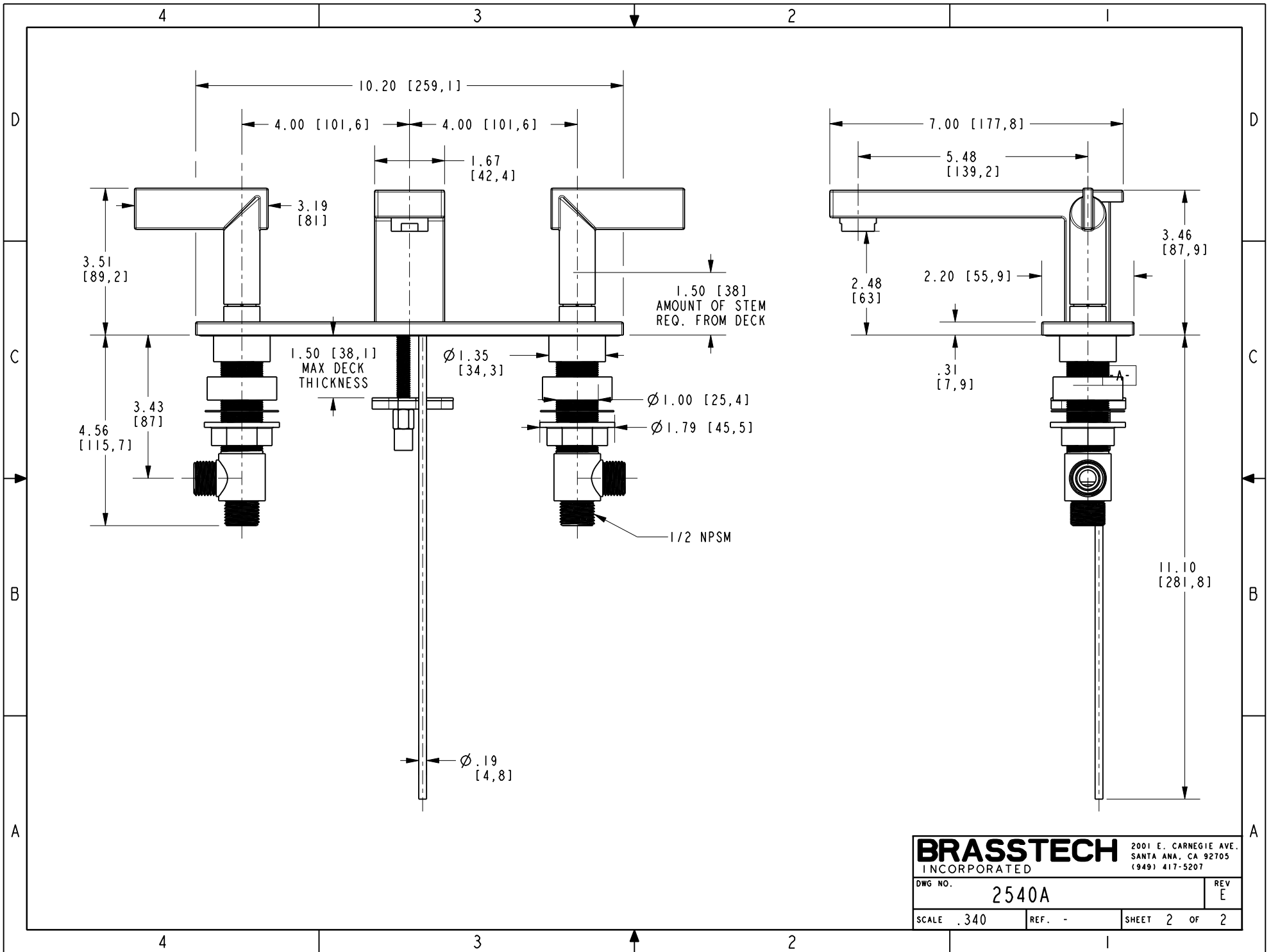
UNITS ARE:	TOLERANCES ARE:
INCHES [MM]	FRACTIONS DECIMALS ANGLES
	$\pm 1/16"$ $.X \pm .1$ [2,5] $\pm 1^\circ$
	$.XX \pm .06$ [1,5]
(X.XXX) DENOTES CRITICAL DIMS. ALL THREADS ARE CRITICAL	
DRAWN	JINSON 01/04/18
CHECKED	J.A. 01/04/18
APPROVED	J.A. 01/04/18

BRASSTECH INCORPORATED
 2001 CARNEGIE AVE. SANTA ANA, CA 92705 (949) 417-5207

W/S LAVATORY FAUCET, SINGLE BASE PLATE

DWG NO. **2540A** REV **E**

SCALE .220 REF. - SHEET 1 OF 2



BRASSTECH		2001 E. CARNEGIE AVE. SANTA ANA, CA 92705 (949) 417-5207	
DWG NO.	2540A	REV	E
SCALE	.340	REF.	-
SHEET 2		OF 2	