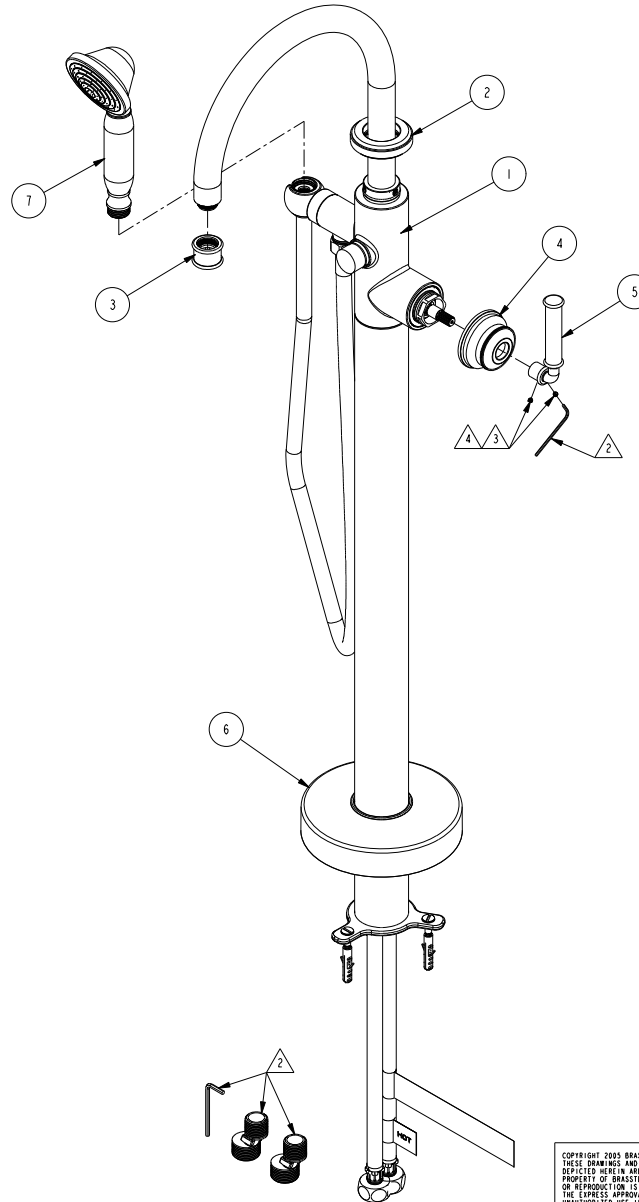


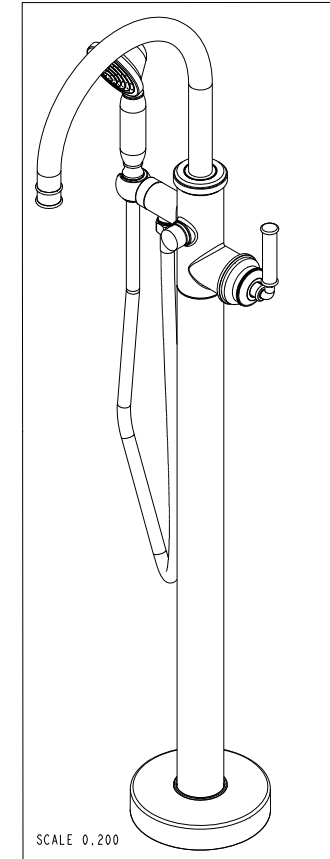
NOTES:

1. TO INSPECT ASSEMBLY, FOLLOW FIRST ARTICLE AND IN PROCESS INSPECTION SHEET.
2. PLACE THESE ITEMS IN SEPERATE PLASTIC BAGS.
3. APPLY LOCTITE 242, IF SCRE DOES NOT HAVE NYLON PATCH.
4. TORQUE TO 7 +/-2 LB-IN.



BILL OF MATERIAL (CURRENT LEVEL)

ITEM	PT/ASSY	DESCRIPTION	TYPE	QTY.
1	3-790	TUB FILLER MODULE	ASSEMBLY	1
2	13895	DECORATIVE COLLAR	PART	1
3	20-731	FLOW STRAIGHTENER	ASSEMBLY	1
4	13893	HANDLE HUB	PART	1
5	20-730	LEVER HANDLE ASM	ASSEMBLY	1
6	3-460	BASE COVER ASM	ASSEMBLY	1
7	283-201	HANDSHOWER ASM	ASSEMBLY	1



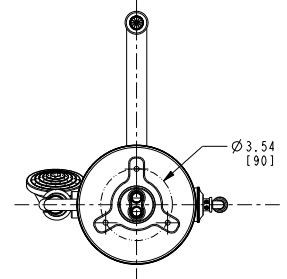
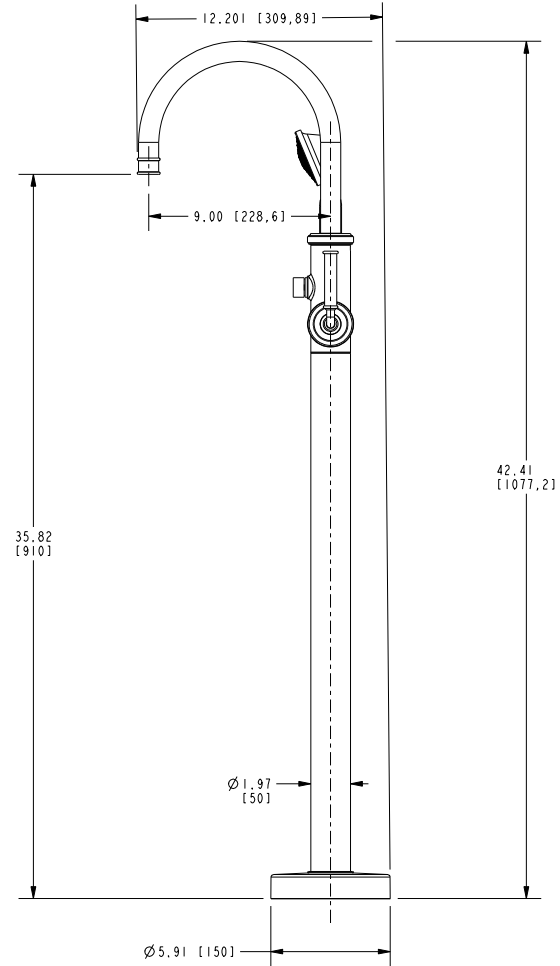
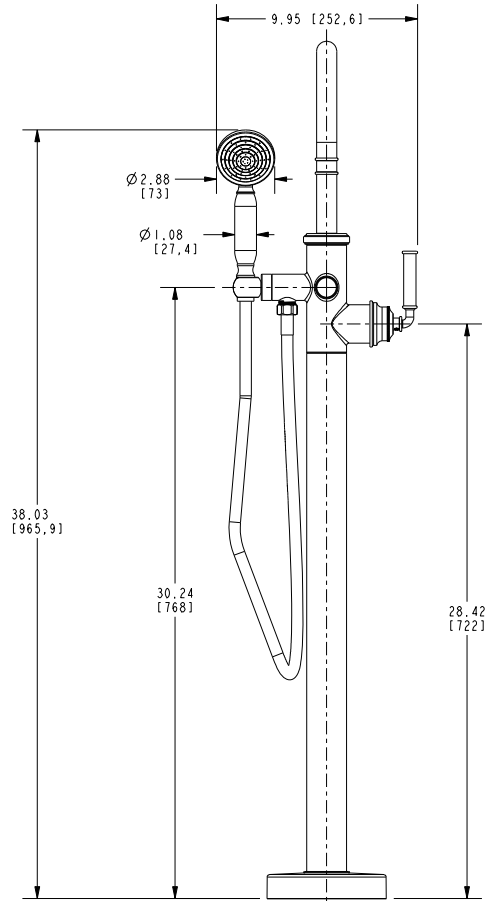
REV	DESCRIPTION	DATE	APPROVED
-	EN-4605	02/14/23	J.W.

COPYRIGHT 2005 BRASSTECH, INC.
 THESE DRAWINGS AND THE DESIGN
 DEPICTED HEREIN ARE THE PROPRIETARY
 PROPERTY OF BRASSTECH, AND USE
 OR REPRODUCTION IS SUBJECT TO
 THE EXPRESS APPROVAL OF BRASSTECH.
 UNAUTHORIZED USE IS STRICTLY
 PROHIBITED. ALL RIGHTS RESERVED.

-	-	UNITS ARE: INCHES (MM)	BRASSTECH INCORPORATED	2001 CARNEGIE AVE. SANTA ANA, CA 92705 (949) 417-5207
-	-	TOLERANCES ARE: FRACTIONS DECIMALS ANGLES ±1/16" .X ±.1 (2.5) ±° - .XX ±.06 (1.5)		
-	-	X, XXX DENOTES CRITICAL DIMS. ALL THREADS ARE CRITICAL.	FREE STANDING TUB FILLER	
-	-	DRAWN		
NEXT ASSY	USED ON	CHECKED	J.W.	02/14/23
APPLICATION		APPROVED	J.W.	02/14/23
REMOVE ALL BURRS AND SHARP EDGES		APPROVED	J.W.	02/14/23

DWG NO. 2940-4261

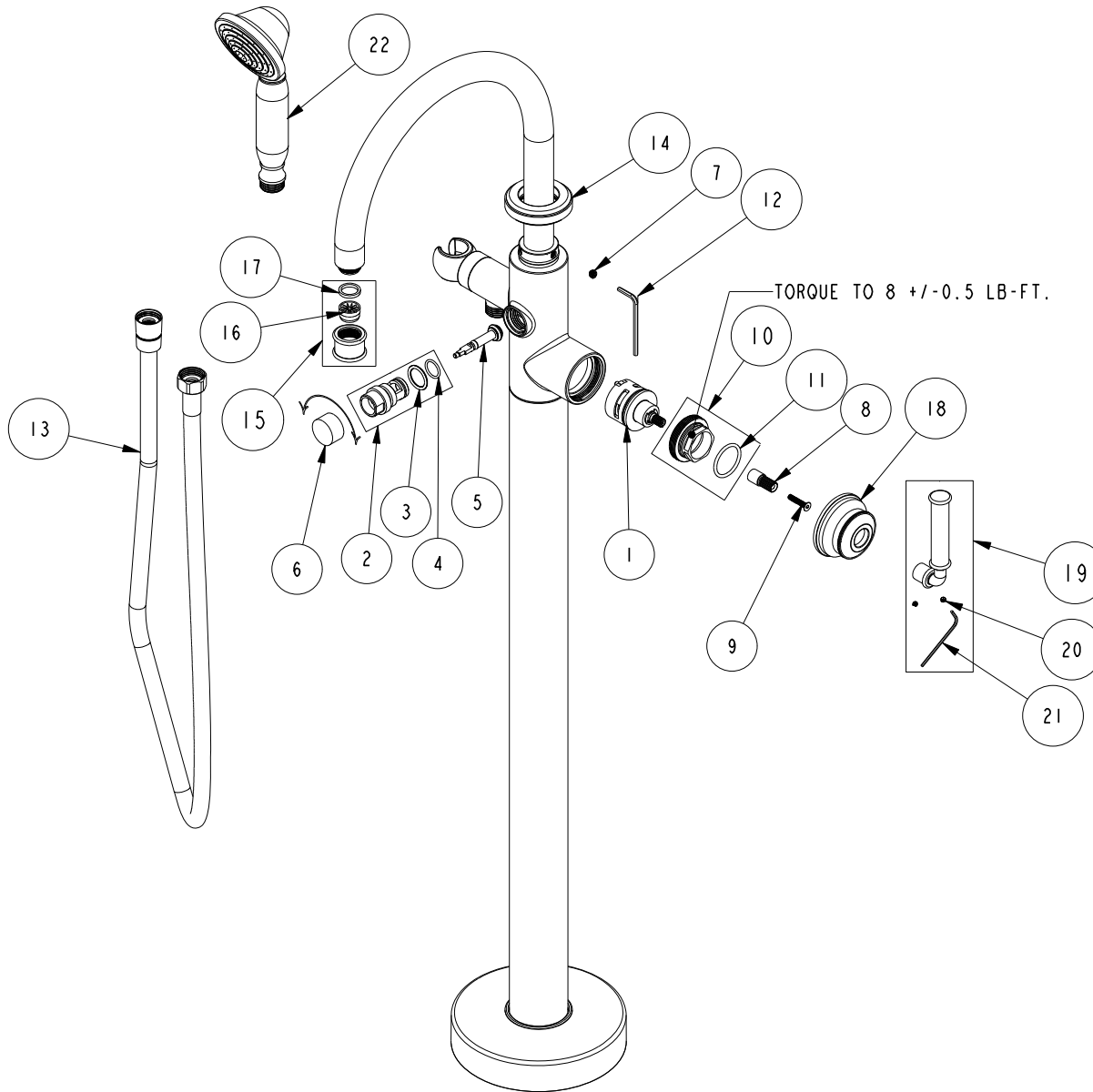
SCALE 0.230 REF. - SHEET 1 OF 3



BRASSTECH		2001 E. CARNEGIE AVE.	
INCORPORATED		SANTA ANA, CA 92705	
DWG NO. 2940-4261		REV -	
SCALE 0.170	REF. -	SHEET 2	OF 3

REPLACEMENT PARTS

NOTE:
USE SILICON GREASE (PARTNUMBER 6727) TO LUBRICATE O-RINGS BEFORE INSTALL.



ITEM	PT/ASSY	SPECIFY FINISH	DESCRIPTION
1	1-513		PROGRESSIVE CARTRIDGE
2	20-260	YES	DIVERTER ASM
3	91030		O-RING, #2- 115, EPDM, 65-75 DURO, NSF 61
4	91079		O-RING, #2- 015, EPDM, 65-75 DURO, NSF 61
5	20-259		DIVERTER ASM
6	12191	YES	DIVERTER BUTTON
7	92017		SCRW, 1/4-20 X 3/16 SKT HD CUP PT SS
8	92991		20T TO 16T BROACH ADAPTER
9	92539		SCRW, M4X22 FLAT HD SOCKET HD CAP
10	1-776		RETAINING NUT ASM.
11	91259		O-RING, #2-121, EPDM, 65-75 DURO
12	92422		HEX KEY, 1/8" ALLOY STEEL
13	284	YES	59 IN. SPIRAL SHOWER HOSE
14	13895	YES	DECORATIVE COLLAR
15	20-731	YES	FLOW STRAIGHTENER
16	91330		STREAM STRAIGHTENER JUNIOR
17	91500		GSKT, .578 ID X .728 OD X .102 THK EPDM
18	13893	YES	HANDLE HUB
19	20-730	YES	LEVER HANDLE ASM
20	92000		SCREW 8 - 32 X 1/8 SS
21	10192		HEX KEY TOOL, #8 5/64
22	283-201	YES	HANDSHOWER ASM

FREE STANDING TUB FILLER
2940-4261

REV - EN- 06/03/22 APPROVED RS

NEWPORT BRASS.

t: 949.417.5207 | www.newportbrass.com