

1/2 NPT

2.36
[59,9]

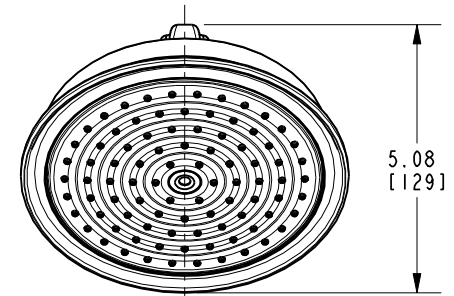
11.82 [300,2]

2.10
[53,4]

8.27 [209,9]

9.75
[247,7]

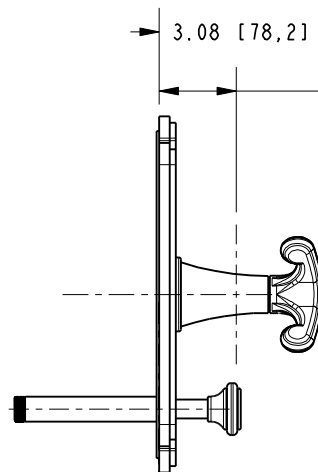
Ø6.20
[157,5]



5.08
[129]

3.08 [78,2]

1.46 [37,1]
AMOUNT OF STEM REQ.
FROM FINISHED WALL



.31 [8]

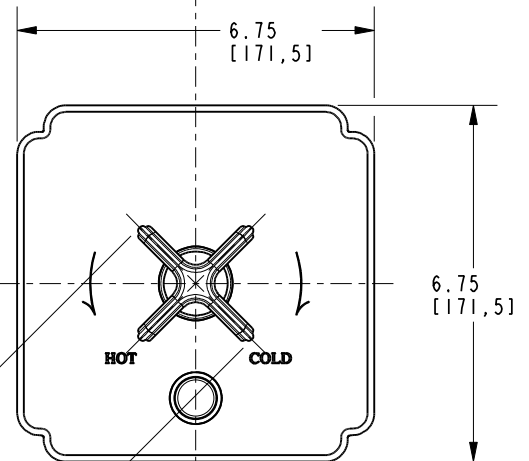
2.72
[69,1]

.40
[10,3]

1/2 NPT
INLET

6.51 [165,4]

7.22 [183,5]

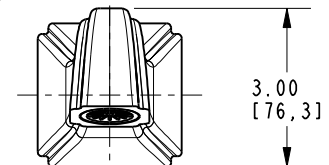


6.75
[171,5]

6.75
[171,5]

HOT COLD

3.00
[76,2]



3.00
[76,3]

BRASSTECH
INCORPORATED

2001 E. CARNEGIE AVE.
SANTA ANA, CA 92705
(949) 417-5207

DWG NO.

3-2522BP

REV
H

SCALE .275

REF. -

SHEET 2 OF 2