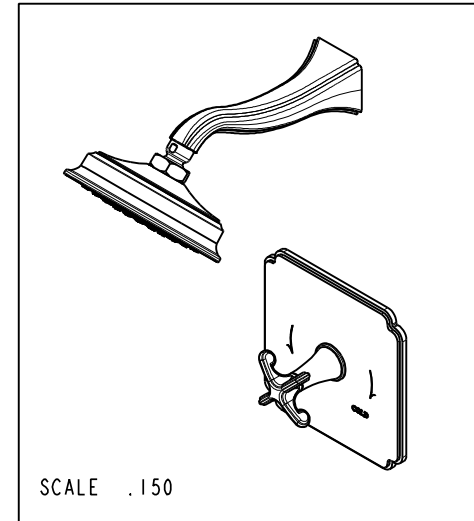
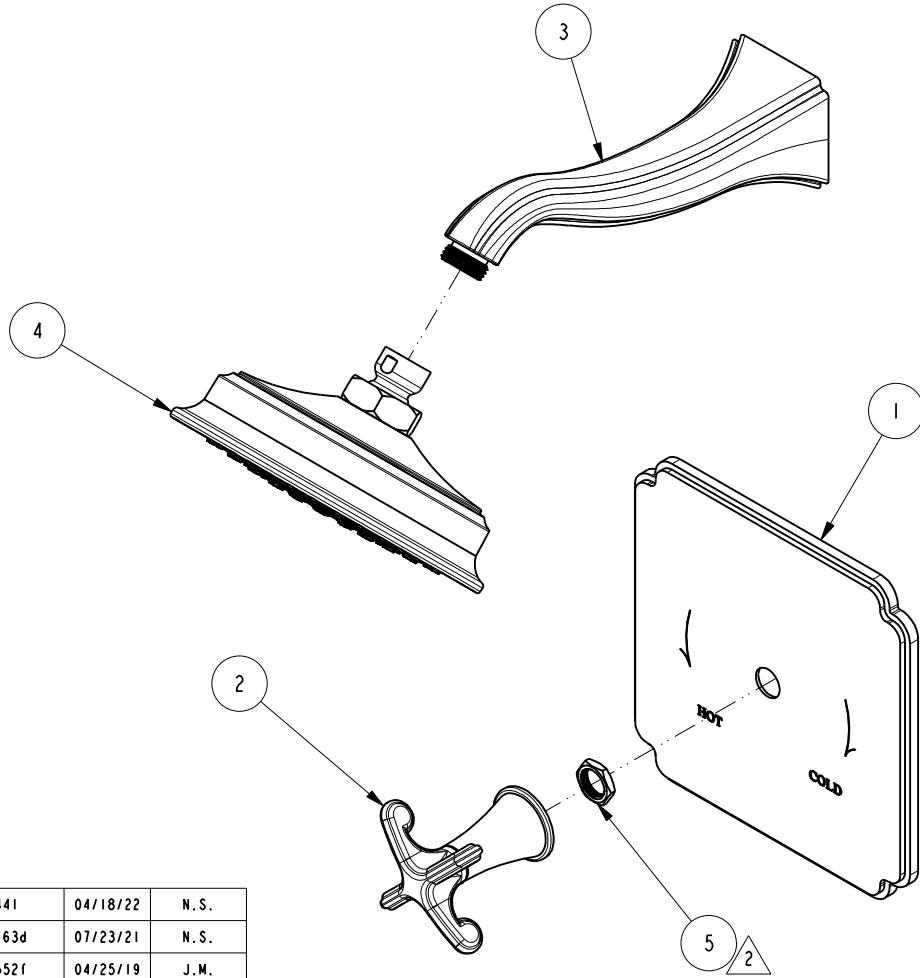


NOTES:

1. TO INSPECT ASSEMBLY, FOLLOW FIRST ARTICLE AND IN PROCESS INSPECTION SHEET.
2. SEAL NUT 10259 IN A PLASTIC BAG AND TAPE TO THE BACK OF THE TRIM PLATE.

BILL OF MATERIAL (CURRENT LEVEL)

ITEM	PT/ASSY	DESCRIPTION	TYPE	QTY.
1	8-011	BP SHOWER PLATE ASM	ASSEMBLY	1
2	20-299	BP LEVER HANDLE ASM	ASSEMBLY	1
3	201-3	SHOWER ARM	ASSEMBLY	1
4	2142	TRAD. SHOWER HEAD - SINGLE JET	ASSEMBLY	1
5	10259	HEX NUT 9/16 X 20 MADE	PART	1



-	J	EN-4441	04/18/22	N.S.
-	H	EN-4163d	07/23/21	N.S.
-	G	EN-3552f	04/25/19	J.M.
-	F	EN-3435	01/18/18	J.A.
-	E	EN-3113	08/11/16	J.A.
-	D	EN-2027b	07/07/15	AN
-	C	EN-2068	02/09/12	AN
-	B	EN-2027	01/06/12	AN
-	A	EN-1805	06/29/11	JM
-	-	EN-1735	06/10/11	JM
ZONE	REV	DESCRIPTION	DATE	APPROVED

COPYRIGHT 2005 BRASSTECH, INC. THESE DRAWINGS AND THE DESIGNS DEPICTED HEREIN ARE THE PROPRIETARY PROPERTY OF BRASSTECH. ANY USE OR REPRODUCTION IS SUBJECT TO THE EXPRESS APPROVAL OF BRASSTECH. UNAUTHORIZED USE IS STRICTLY PROHIBITED. ALL RIGHTS RESERVED.

TESTING	-	-	-
ASSEMBLY	-	-	-
PLATING	-	-	-
POLISHING	-	NEXT ASSY	USED ON
MACHINING	-	APPLICATION	
TOOLING FIXTURE #	REMOVE ALL BURRS AND SHARP EDGES		

UNITS ARE: INCHES [MM]

TOLERANCES ARE:
 FRACTIONS DECIMALS ANGLES
 $\pm 1/16"$.X $\pm .1$ [2,5] $\pm 1^\circ$
 .XX $\pm .06$ [1,5]

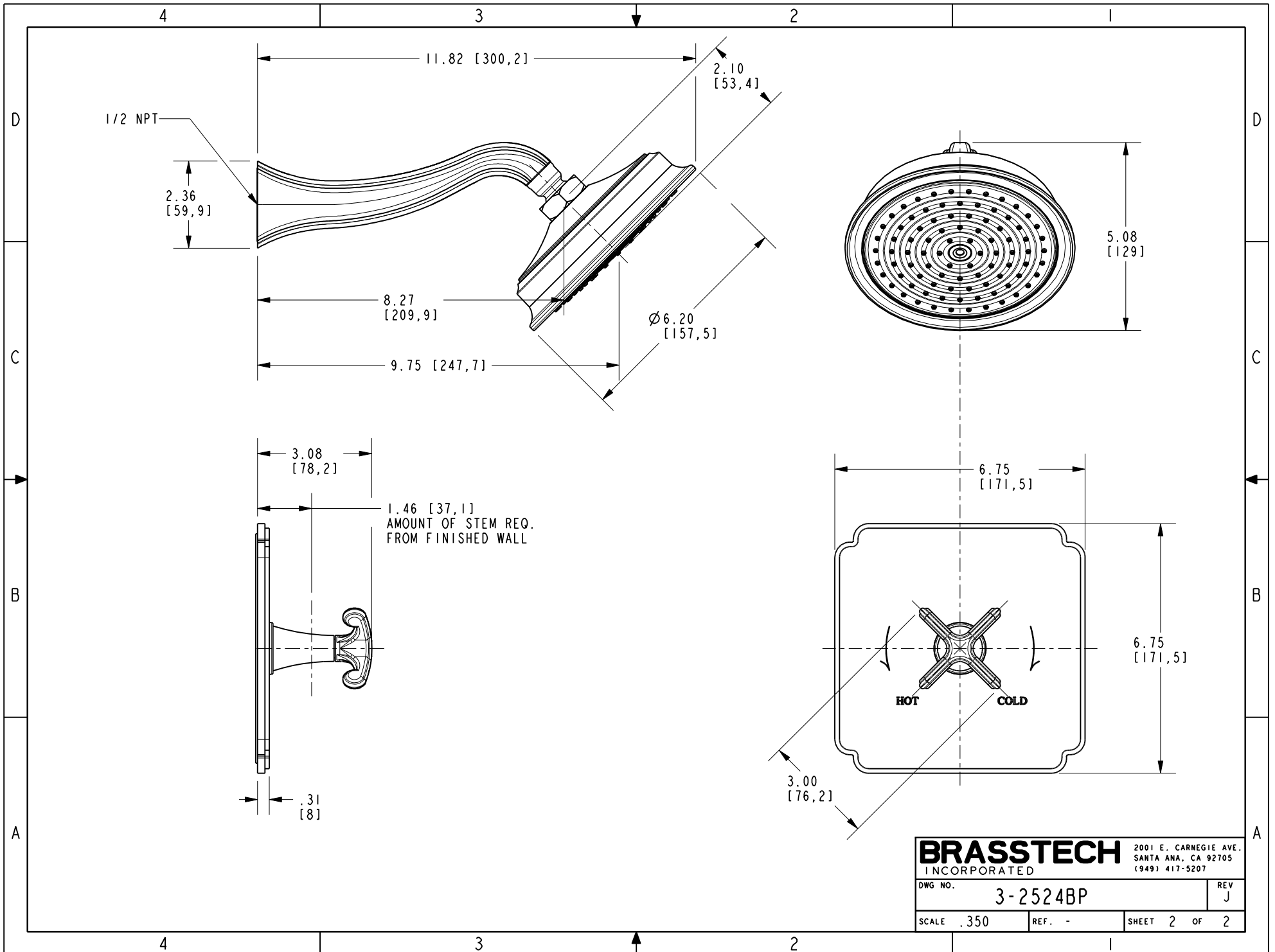
(X.XXX) DENOTES CRITICAL DIMS.
 ALL THREADS ARE CRITICAL

DRAWN	J.T.	04/18/22
CHECKED	N.S.	04/18/22
APPROVED	N.S.	04/18/22

BRASSTECH 2001 CARNEGIE AVE.
 INCORPORATED SANTA ANA, CA 92705
 (949) 417-5207

**BP SHOWER TRIM SET W/
 CROSS HANDLE**

DWG NO.	3-2524BP	REV	J
SCALE	.300	REF.	-
SHEET	1	OF	2



BRASSTECH		2001 E. CARNEGIE AVE.
INCORPORATED		SANTA ANA, CA 92705
		(949) 417-5207
DWG NO.	3-2524BP	REV J
SCALE .350	REF. -	SHEET 2 OF 2