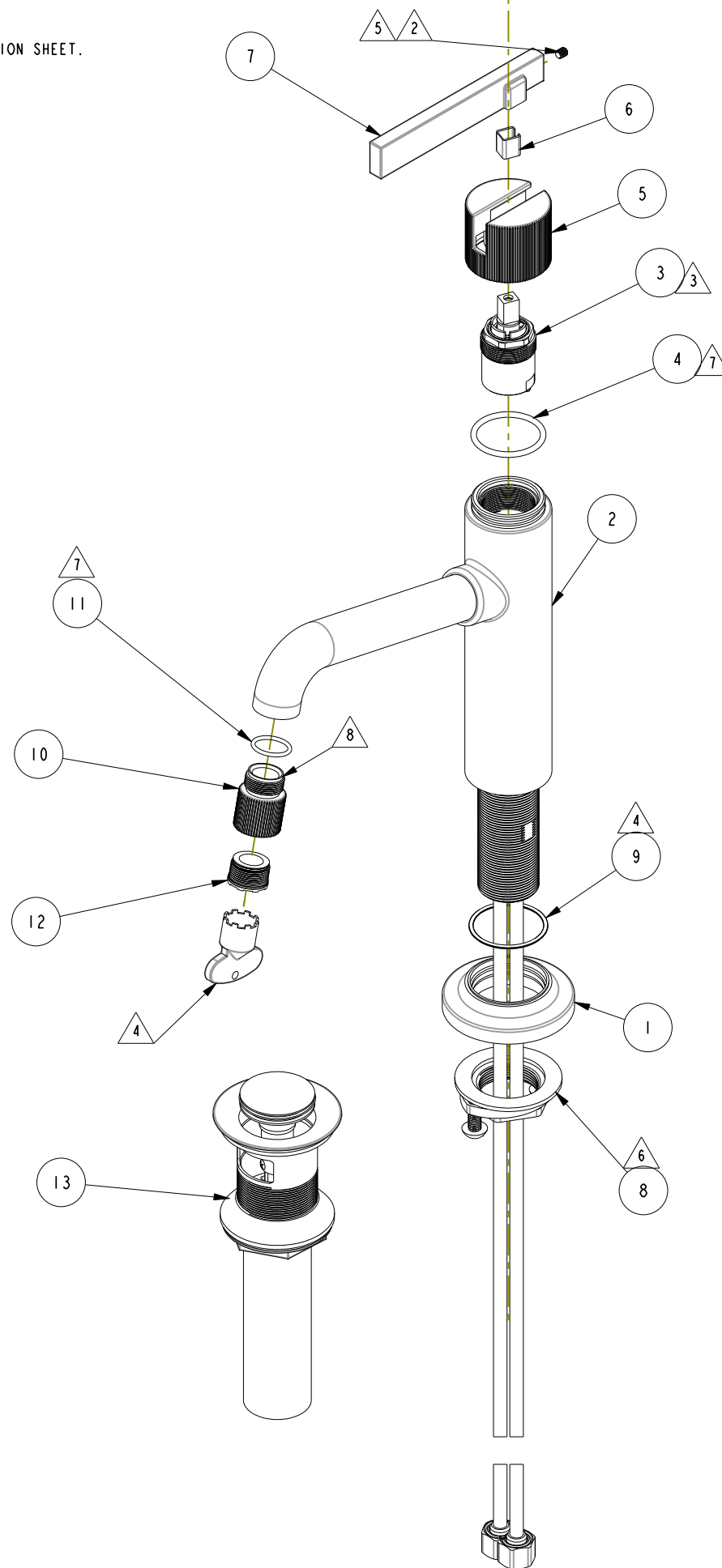


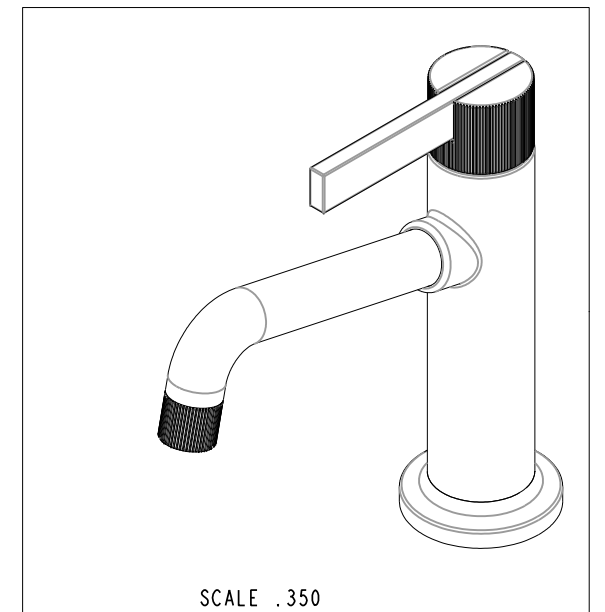
NOTES:

- 1. TO INSPECT ASSEMBLY, FOLLOW FIRST ARTICLE AND IN PROCESS INSPECTION SHEET.
- 2. APPLY LOCTITE 242 TO THREADS.
- 3. TORQUE TO 9-11 LB-FT.
- 4. PUT THESE ITEMS IN SEPARATE PLASTIC BAGS.
- 5. TORQUE TO 7 +/-2 LB-IN.
- 6. PARTIALLY THREAD MOUNTING KIT ONTO SHANK.
- 7. APPLY THIN COAT OF SILICON GREASE.
- 8. APPLY LOCTITE 680 TO THREADS.



BILL OF MATERIAL (CURRENT LEVEL)

| ITEM | PT/ASSY | DESCRIPTION | TYPE | QTY. |
|------|---------|--|----------|------|
| 1 | 20-714 | ESCUTCHEON ASM. | ASSEMBLY | 1 |
| 2 | 3-789 | SPOUT BODY ASM | ASSEMBLY | 1 |
| 3 | 1-371 | CARTRIDGE | PART | 1 |
| 4 | 91505 | O-RING, #2-123, EPDM, 65-75 DURO | PART | 1 |
| 5 | 13886 | HANDLE HUB | PART | 1 |
| 6 | 91534 | CARTRIDGE STEM INSERT | PART | 1 |
| 7 | 20-723 | LEVER HANDLE ASM. | ASSEMBLY | 1 |
| 8 | 1-393 | 1-1/8 18 UNEF MOUNTING KIT | ASSEMBLY | 1 |
| 9 | 91764 | O-RING, #2-027, EP, 50 DURO - GREY | PART | 1 |
| 10 | 13881 | AERATOR SHELL | PART | 1 |
| 11 | 91020 | O-RING, #2-016, EPDM, 65-75 DURO, NSF 61 | PART | 1 |
| 12 | 1-492 | AERATOR 1.2 GPM WITH KEY | ASSEMBLY | 1 |
| 13 | 330 | DRAIN, PUSH DOWN, W/ OVERFLOW | ASSEMBLY | 1 |



| REV | DESCRIPTION | DATE | APPROVED |
|-----|-------------|----------|----------|
| A | EN-4694 | 08/23/23 | NS |
| - | EN-4598 | 01/18/23 | J.M. |

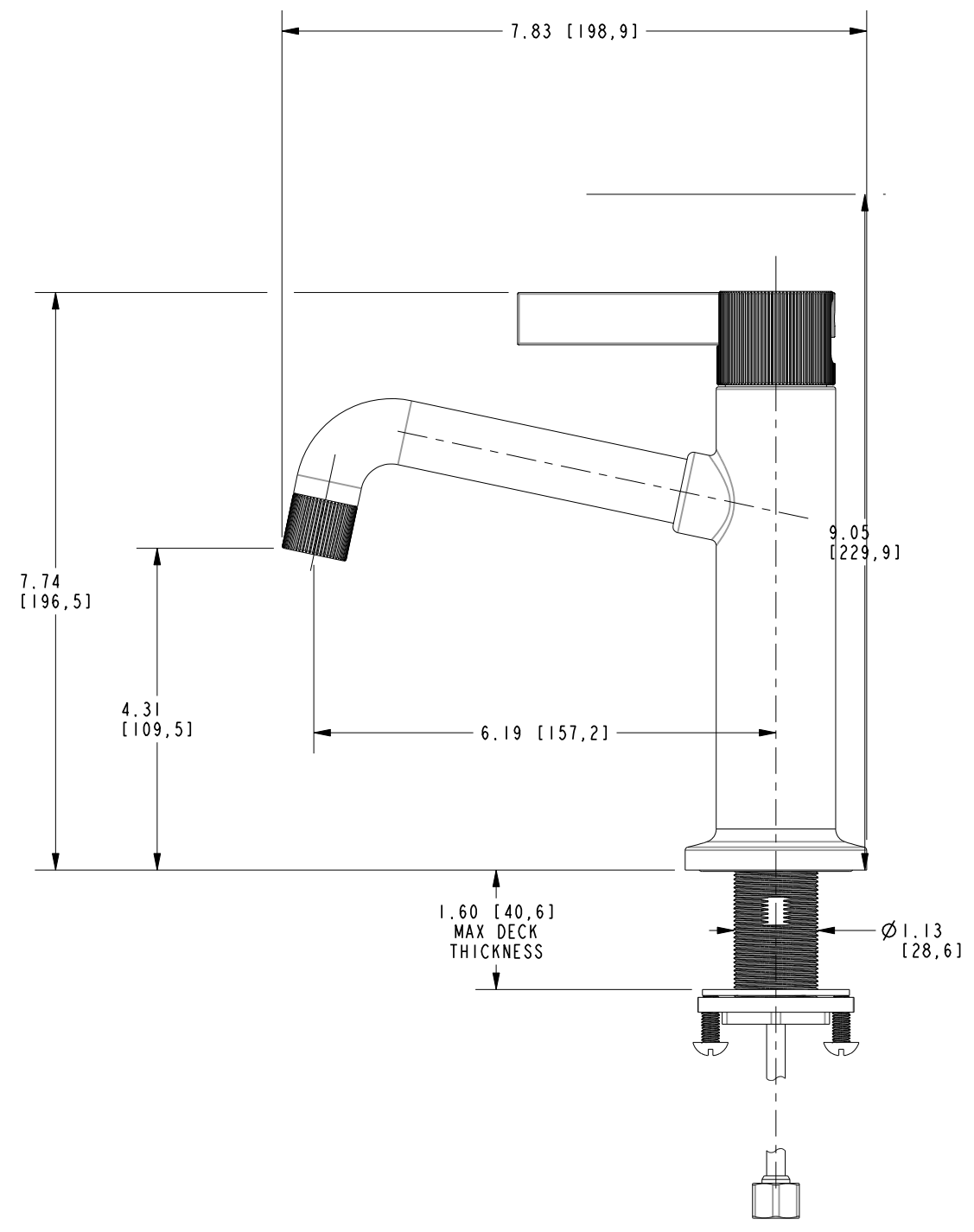
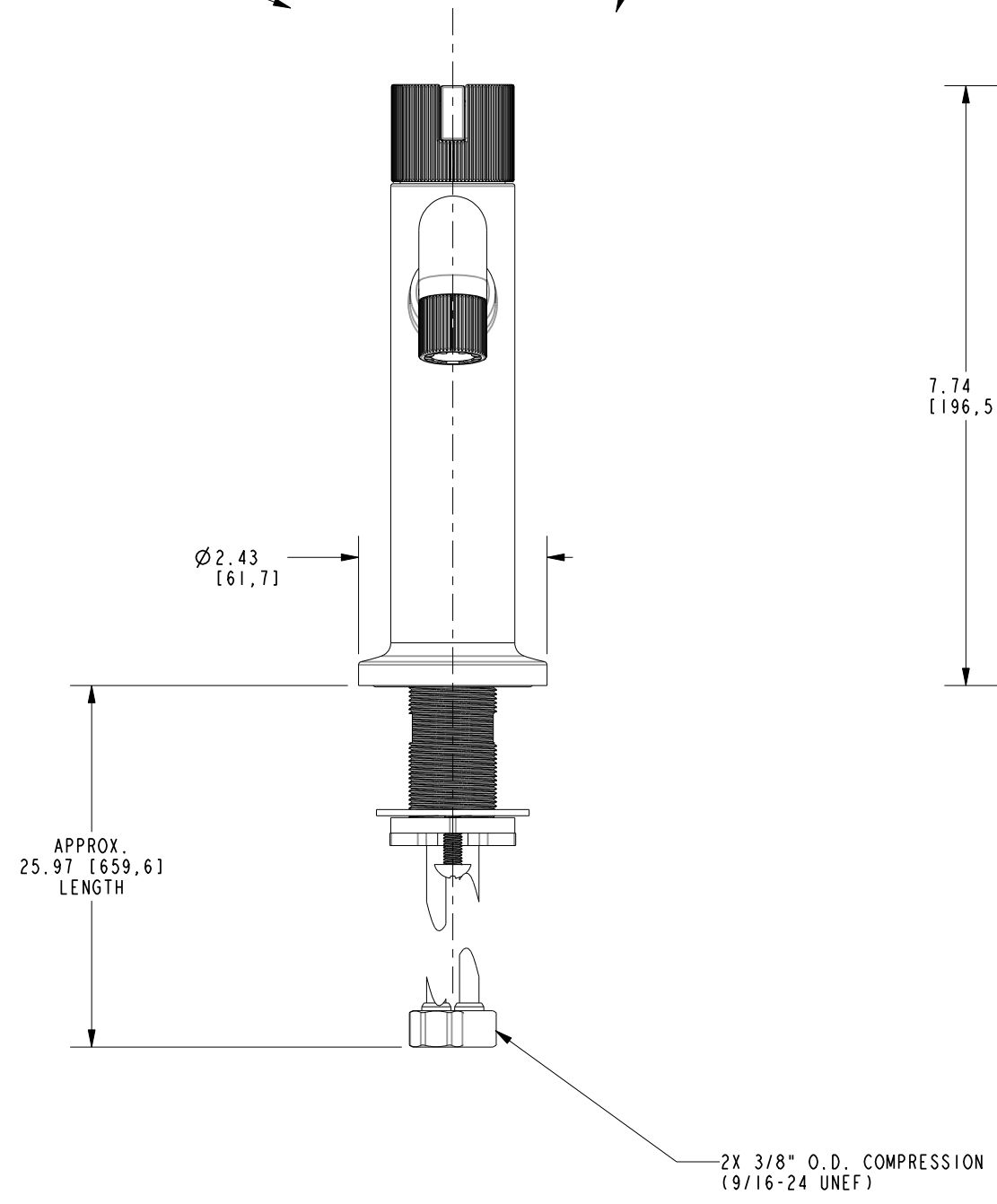
COPYRIGHT 2005 BRASSTECH, INC. THESE DRAWINGS AND THE DESIGNS DEPICTED HEREIN ARE THE PROPRIETARY PROPERTY OF BRASSTECH. ANY USE OR REPRODUCTION IS SUBJECT TO THE EXPRESS APPROVAL OF BRASSTECH. UNAUTHORIZED USE IS STRICTLY PROHIBITED. ALL RIGHTS RESERVED.

| UNITS ARE: | INCHES | [MM] |
|----------------------------------|---|---------------|
| TOLERANCES ARE: | FRACTIONS DECIMALS | ANGLES |
| | ±1/16" | ±1° |
| | .X ±.1 [2.5] | |
| | .XX ±.06 [1.5] | |
| | X.XXX DENOTES CRITICAL DIMS. ALL THREADS ARE CRITICAL | |
| NEXT ASSY | USED ON | DRAWN |
| | | G.B. 01/18/23 |
| APPLICATION | | CHECKED |
| | | J.M. 01/18/23 |
| REMOVE ALL BURRS AND SHARP EDGES | | APPROVED |
| | | J.M. 01/18/23 |

| | | | |
|--------------------|------|---|---|
| BRASSTECH | | 2001 CARNEGIE AVE. SANTA ANA, CA 92705 (949) 417-5207 | |
| INCORPORATED | | | |
| SINGLE HOLE FAUCET | | | |
| DWG NO. | 3233 | REV | A |
| SCALE | .350 | REF. | - |
| SHEET | 1 | OF | 3 |

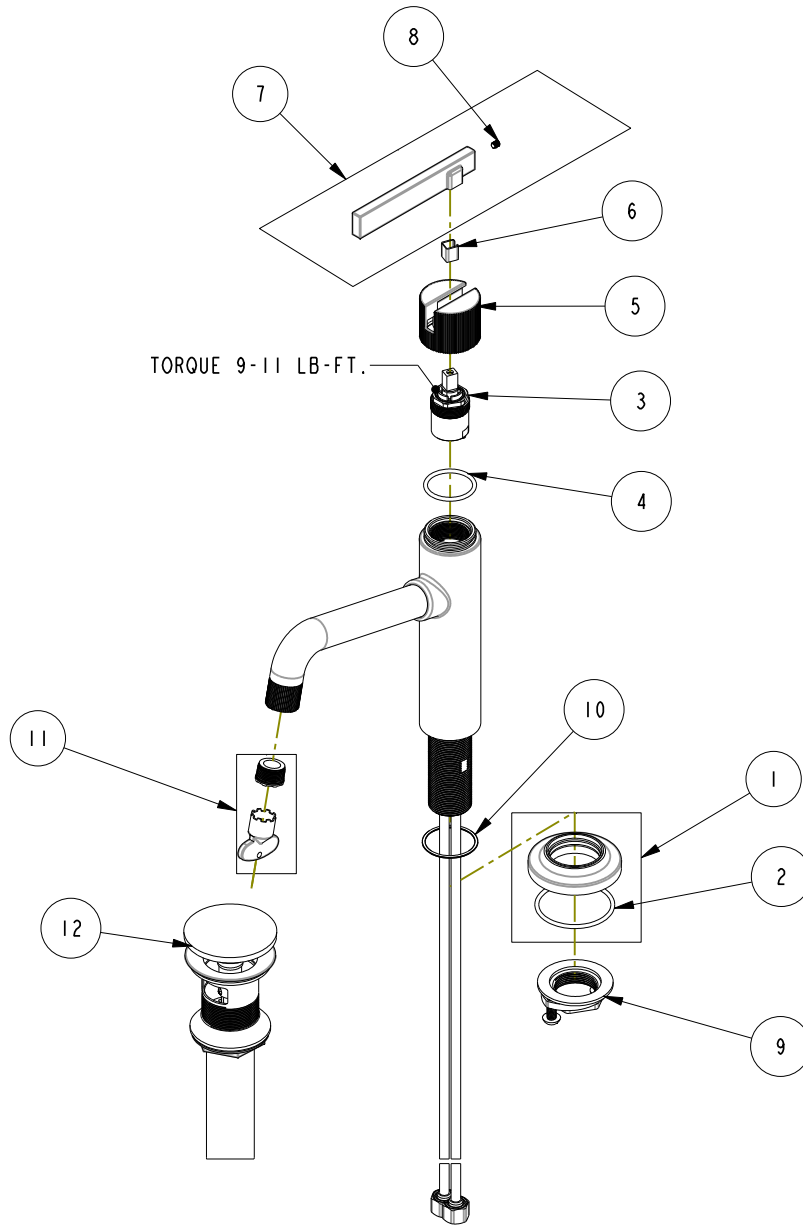
FULL HOT POSITION

FULL COLD POSITION



| | | | |
|------------------|--------|-----------------------|--|
| BRASSTECH | | 2001 E. CARNEGIE AVE. | |
| INCORPORATED | | SANTA ANA, CA 92705 | |
| DWG NO. 3233 | | REV A | |
| SCALE .450 | REF. - | SHEET 2 OF 3 | |

REPLACEMENT PARTS



| ITEM | PT/ASSY | SPECIFY FINISH | DESCRIPTION |
|------|---------|----------------|------------------------------------|
| 1 | 20-714 | YES | ESCUTCHEON ASM. |
| 2 | 91756 | | O-RING #2-134, EP, 50 DURO - GREY |
| 3 | 1-371 | | CARTRIDGE |
| 4 | 91505 | | O-RING, #2-123, EPDM, 65-75 DURO |
| 5 | 13886 | YES | HANDLE HUB |
| 6 | 91534 | | CARTRIDGE STEM INSERT |
| 7 | 20-723 | YES | LEVER HANDLE ASM. |
| 8 | 92001 | | SCRW, 8-32 X 3/16 SKT HD FLT PT SS |
| 9 | 1-393 | | 1-1/8 18 UNEF MOUNTING KIT |
| 10 | 91764 | | O-RING, #2-027, EP, 50 DURO - GREY |
| 11 | 1-492 | | AERATOR 1.2 GPM WITH KEY |
| 12 | 330 | YES | DRAIN, PUSH DOWN, W/ OVERFLOW |

**SINGLE HOLE FAUCET
3233**

REV A EN-4694 08/23/23 APPROVED RS

NEWPORT BRASS.

t: 949.417.5207 | www.newportbrass.com