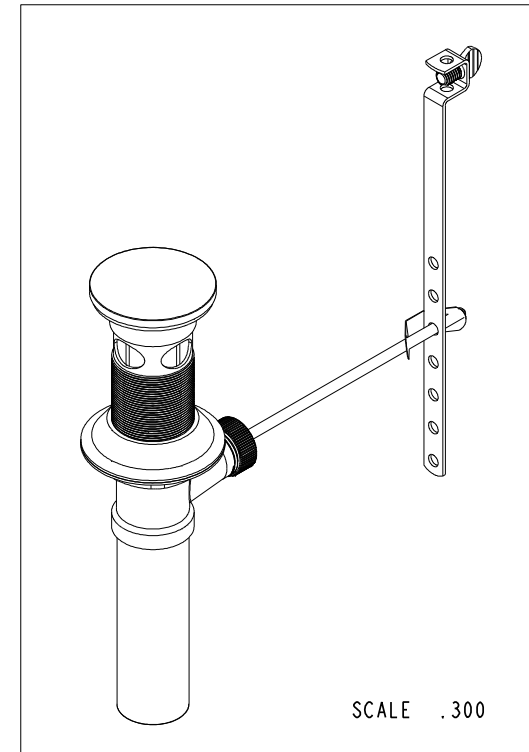
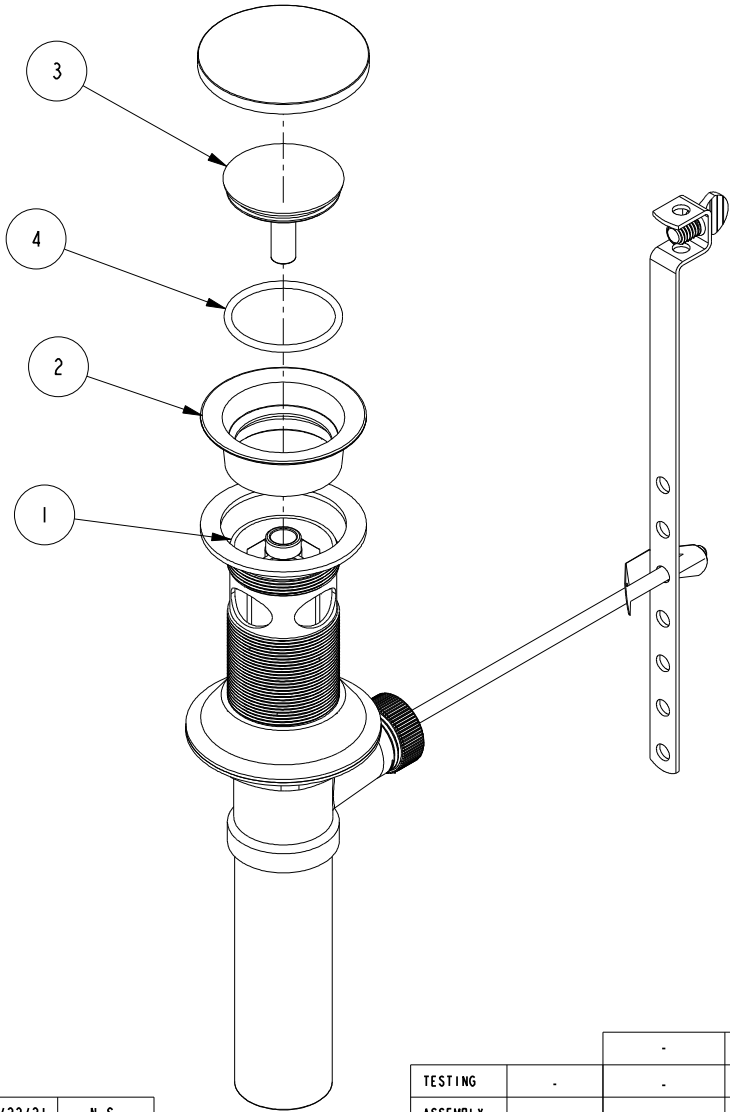


NOTES:

- (N1) 1. TO INSPECT ASSEMBLY, FOLLOW FIRST ARTICLE AND IN PROCESS INSPECTION SHEET.
- 2. FOR PURCHASED ASSEMBLIES, SUPPLIER TO ADD PROP 65 LABEL #98-0111.

BILL OF MATERIAL (CURRENT LEVEL)				
ITEM	PT/ASSY	DESCRIPTION	TYPE	QTY.
1	20-330	POP UP BODY ASM	ASSEMBLY	1
2	20-261	FLANGE ASM	ASSEMBLY	1
3	12531	DRAIN CAP	PART	1
4	91642	O-RING	PART	1



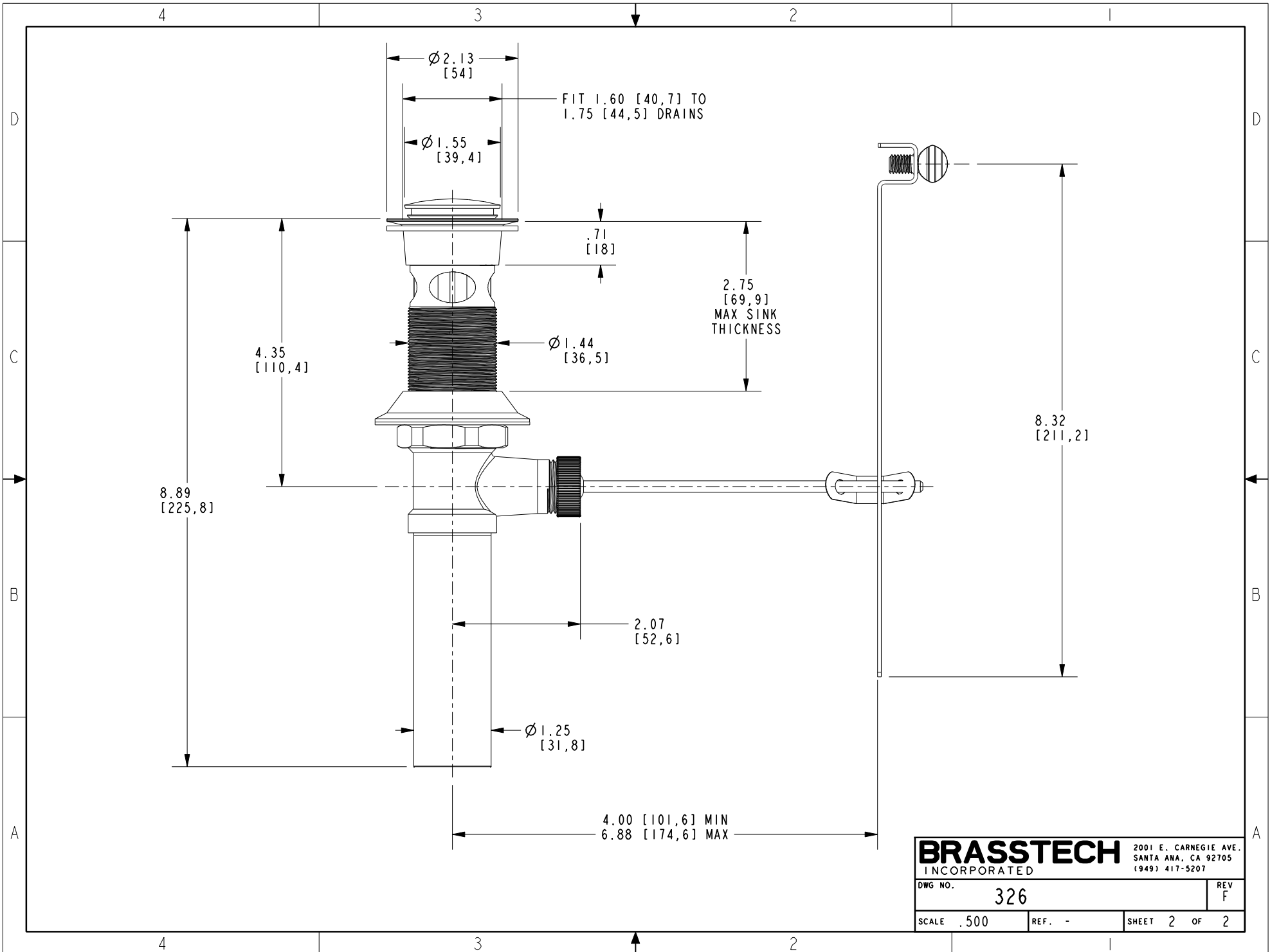
ZONE	REV	DESCRIPTION	DATE	APPROVED
-	F	EN-430011	10/22/21	N.S.
-	E	EN-3972	09/25/19	C.G.
-	D	EN-3372	08/04/17	V.V.
-	C	EN-3079	06/13/16	V.V.

COPYRIGHT 2005 BRASSTECH, INC. THESE DRAWINGS AND THE DESIGNS DEPICTED HEREIN ARE THE PROPRIETARY PROPERTY OF BRASSTECH. ANY USE OR REPRODUCTION IS SUBJECT TO THE EXPRESS APPROVAL OF BRASSTECH. UNAUTHORIZED USE IS STRICTLY PROHIBITED. ALL RIGHTS RESERVED.

TESTING	-	-	-
ASSEMBLY	-	-	-
PLATING	-	-	-
POLISHING	-	NEXT ASSY	USED ON
MACHINING	-	APPLICATION	
TOOLING FIXTURE #	REMOVE ALL BURRS AND SHARP EDGES		

UNITS ARE: INCHES [MM]	
TOLERANCES ARE:	
FRACTIONS	DECIMALS
±1/16"	.X ±.1 [2.5]
	.XX ±.06 [1.5]
ANGLES ±1°	
(X.XXX) DENOTES CRITICAL DIMS.	
ALL THREADS ARE CRITICAL	
DRAWN	C.GAYOSSO 09/25/19
CHECKED	V. VU 09/25/19
APPROVED	V. VU 09/25/19

BRASSTECH		2001 CARNEGIE AVE. SANTA ANA, CA 92705 (949) 417-5207	
INCORPORATED			
DRAIN ASM W/ OVERFLOW			
DWG NO.	326	REV	F
SCALE	.406	REF.	-
SHEET	1	OF	2



BRASSTECH		2001 E. CARNEGIE AVE. SANTA ANA, CA 92705 (949) 417-5207	
DWG NO.	326	REV	F
SCALE	.500	REF.	-
		SHEET	2 OF 2