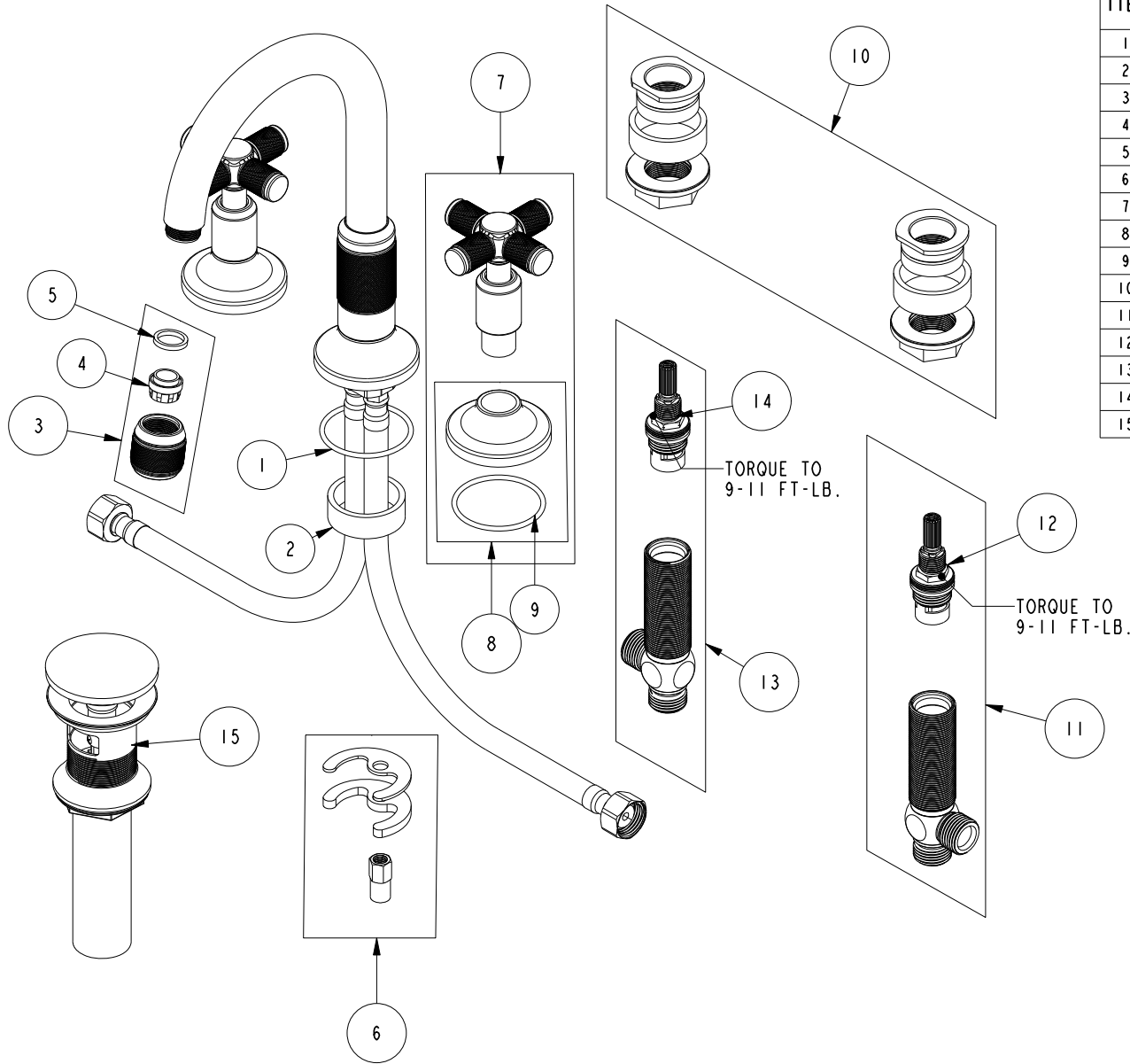


# REPLACEMENT PARTS



ITEM	PT/ASSY	SPECIFY FINISH	DESCRIPTION
1	91773		O-RING, #2-133, 50 DURO
2	10382		QUICK CONNECT SPACER
3	20-441	YES	AERATOR ASM
4	12403		AERATOR INSERT, Jr. SIZE, 1.2 GPM
5	91500		GSKT, .578 ID X .728 OD X .102 THK EPDM
6	1-491		SPOUT MOUNTING KIT
7	3-647	YES	CROSS HANDLE W/ESC.
8	20-432	YES	ESCUTCHEON ASM
9	91773		O-RING, #2-133, 50 DURO
10	1-226		WIDESPREAD MOUNTING HARDWARE
11	1-527		W/S CART/BODY ASM (HOT)
12	1-002		W/S CARTRIDGE - HOT
13	1-526		W/S CART/BODY ASM (COLD)
14	1-001		W/S CARTRIDGE - COLD
15	330	YES	DRAIN, PUSH DOWN, W/ OVERFLOW

**WIDESPREAD FAUCET  
3260C**

REV B EN-4793 03/11/24

**NEWPORT BRASS.**

t: 949.417.5207 | www.newportbrass.com