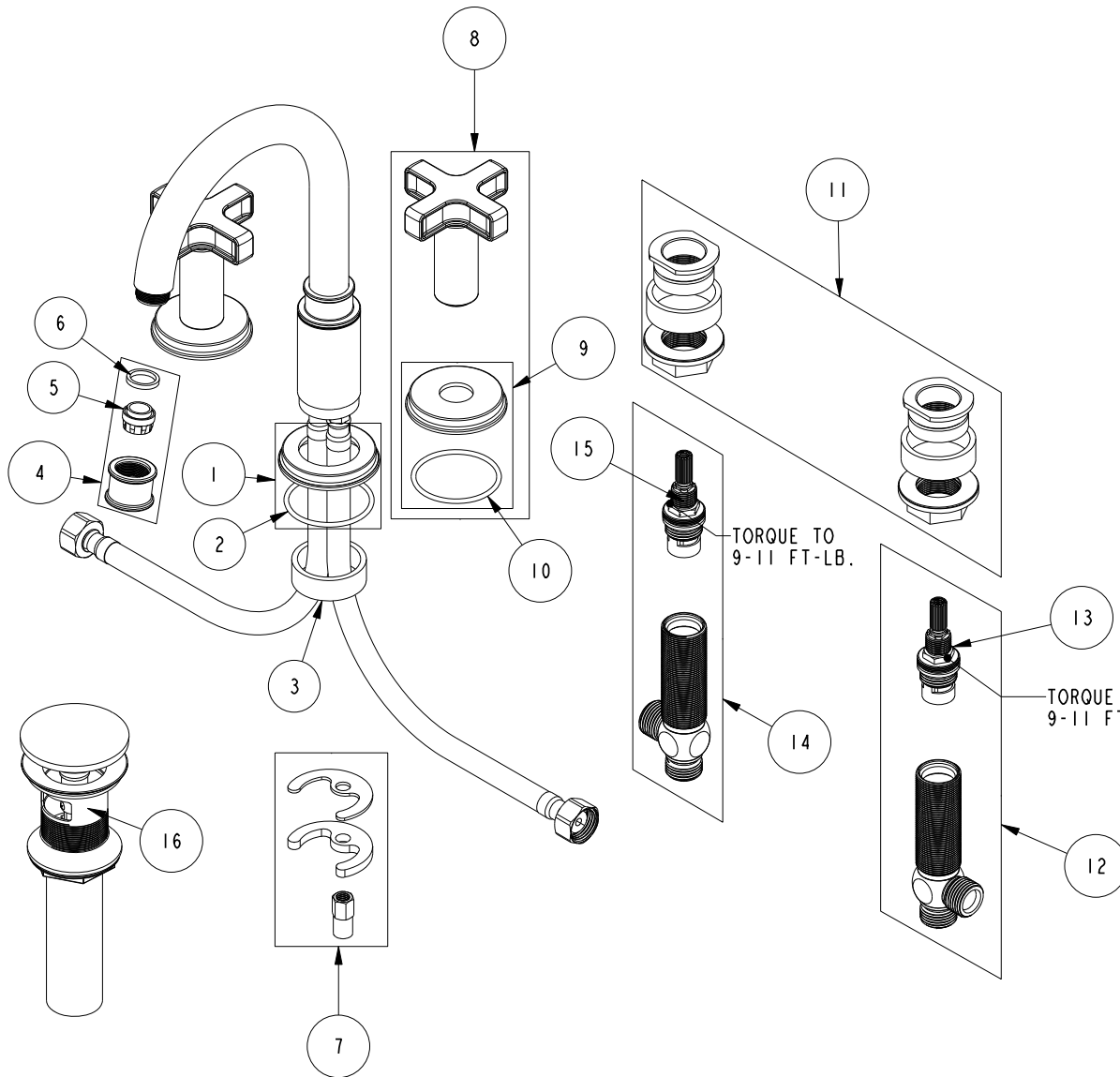


# REPLACEMENT PARTS



ITEM	PT/ASSY	SPECIFY FINISH	DESCRIPTION
1	20-735	YES	ESCUTCHEON ASM
2	91773		O-RING, #2-133, 50 DURO
3	10382		QUICK CONNECT SPACER
4	20-442	YES	AERATOR ASM
5	12403		AERATOR INSERT, Jr. SIZE, 1.2 GPM
6	91500		GSKT, .578 ID X .728 OD X .102 THK EPDM
7	1-491		SPOUT MOUNTING KIT
8	3-649	YES	CROSS HANDLE W/ESC.
9	20-433	YES	ESCUTCHEON ASM
10	91773		O-RING, #2-133, 50 DURO
11	1-226		WIDESPREAD MOUNTING HARDWARE
12	1-527		W/S CART/BODY ASM (HOT)
13	1-002		W/S CARTRIDGE - HOT
14	1-526		W/S CART/BODY ASM (COLD)
15	1-001		W/S CARTRIDGE - COLD
16	330	YES	DRAIN, PUSH DOWN, W/ OVERFLOW

**WIDESPREAD FAUCET  
3280C**

REV B EN-4793 03/11/24

**NEWPORT BRASS.**

t: 949.417.5207 | www.newportbrass.com