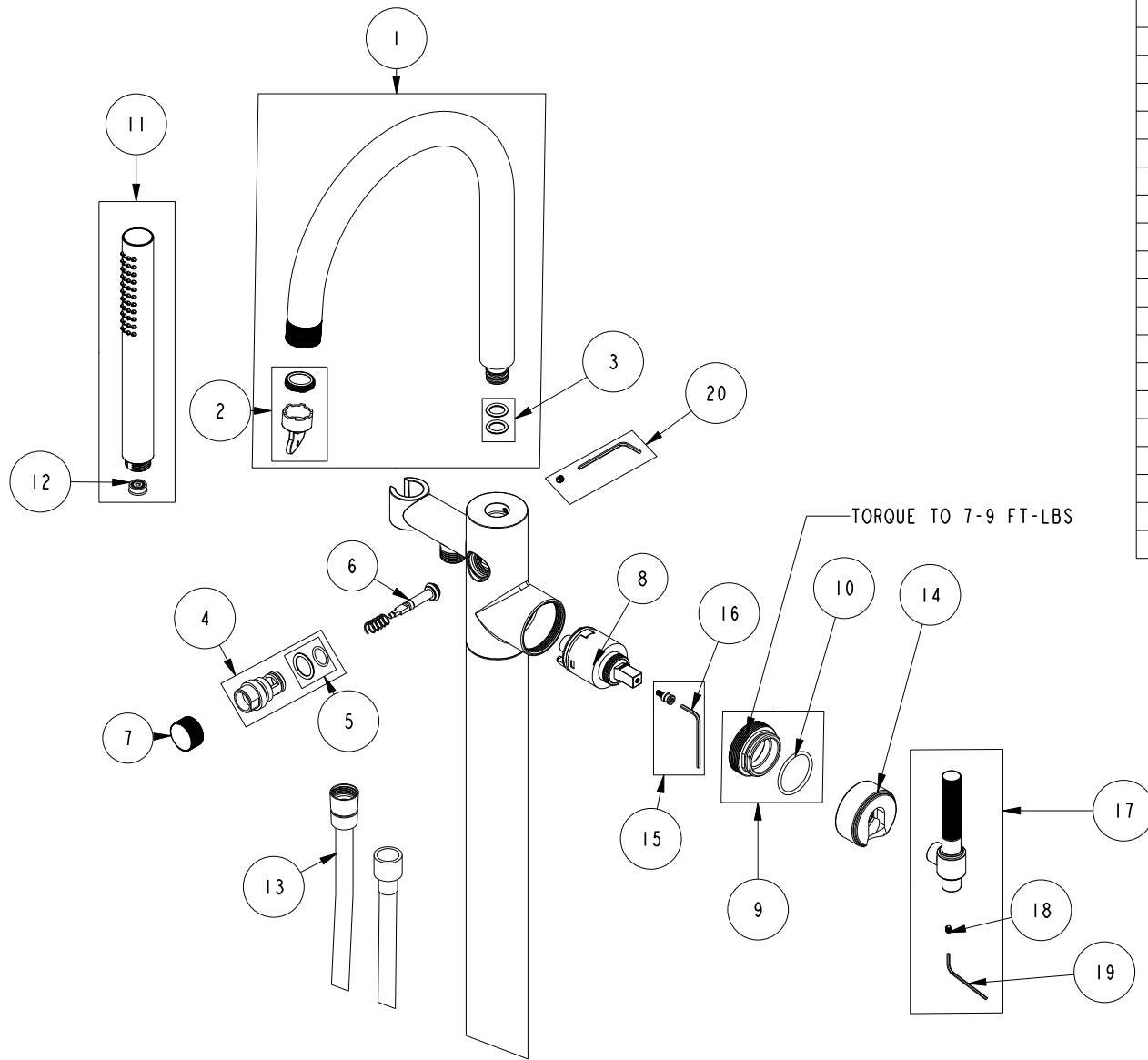


REPLACEMENT PARTS



| ITEM | PT/ASSY | SPECIFY FINISH | DESCRIPTION |
|------|---------|----------------|------------------------------------|
| 1 | 3-771 | YES | SPOUT ASM |
| 2 | 10-307 | | AERATOR WITH KEY ASM |
| 3 | 10-341 | | FREE STANDING TUB SPOUT O-RING KIT |
| 4 | 20-260 | YES | DIVERTER HOUSING ASM |
| 5 | 10-340 | | DIVERTER ASM O-RING KIT |
| 6 | 20-259 | | DIVERTER ASM |
| 7 | 13842 | YES | DIVERTER BUTTON |
| 8 | 1-292 | | CARTRIDGE |
| 9 | 10-337 | | CARTRIDGE RETAINER ASM |
| 10 | 91227 | | O-RING, #2-125 EPDM |
| 11 | 283-101 | YES | ROUND WAND HANDSHOWER |
| 12 | 12832 | | FLOW REGULATOR, 1.8 GPM MAX |
| 13 | 284_ | | SHOWER HOSE |
| 14 | 13861 | YES | TUB FILLER HUB |
| 15 | 1-519 | | HANDLE ADAPTER SCREW WITH HEX KEY |
| 16 | 10159 | | HEX KEY, 3/32 ALLOY STEEL |
| 17 | 20-691 | YES | KNURLED HANDLE ASM |
| 18 | 92001 | | SCRW, 8-32 X 3/16 SKT HD FLT PT SS |
| 19 | 10192 | | HEX KEY TOOL, #8 5/64 |
| 20 | 10-342 | | HEX WRENCH AND SET SCREW KIT |

FREESTANDING TUB FILLER
3290-4261

REV B EN-4745 03/11/24

NEWPORT BRASS.

t: 949.417.5207 | www.newportbrass.com