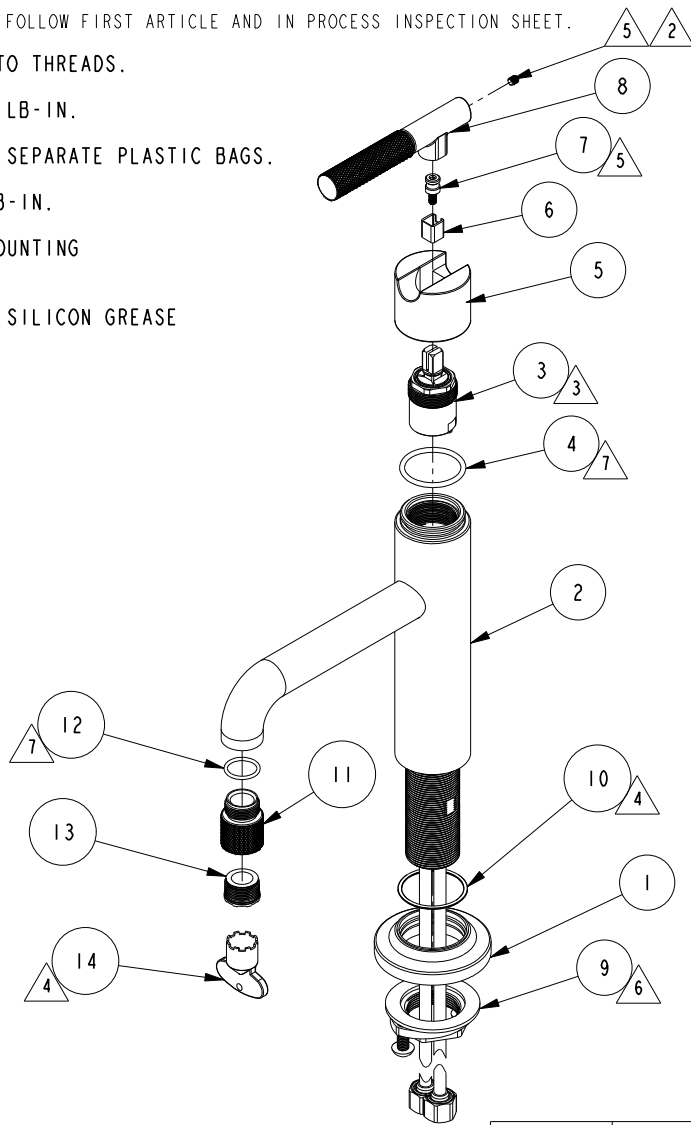


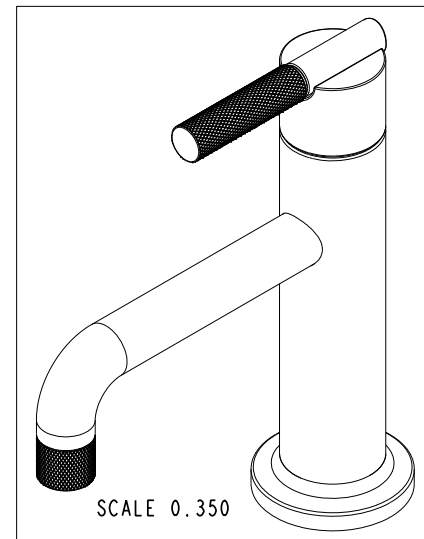
NOTES:

1. TO INSPECT ASSEMBLY, FOLLOW FIRST ARTICLE AND IN PROCESS INSPECTION SHEET.
2. APPLY LOCTITE 242 TO THREADS.
3. TORQUE TO 135 +/-5 LB-IN.
4. PUT THESE ITEMS IN SEPARATE PLASTIC BAGS.
5. TORQUE TO 7 +/-2 LB-IN.
6. PARTIALLY THREAD MOUNTING KIT ONTO SHANK.
7. APPLY THIN COAT OF SILICON GREASE



BILL OF MATERIAL (CURRENT LEVEL)

ITEM	PT/ASSY	DESCRIPTION	TYPE	QTY.
1	20-714	ESCUTCHEON ASM.	ASSEMBLY	1
2	3-788	SPOUT BODY ASM	ASSEMBLY	1
3	1-371	CARTRIDGE	PART	1
4	91505	O-RING, #2-123, EPDM, 65-75 DURO	PART	1
5	13825	HANDLE HUB, CONTEMP	PART	1
6	91534	CARTRIDGE STEM INSERT	PART	1
7	11874	HANDLE ADAPTER SCREW	PART	1
8	20-715	AERATOR SHELL ASM.	ASSEMBLY	1
9	1-393	1-1/8 18 UNEF MOUNTING KIT	ASSEMBLY	1
10	91764	O-RING, #2-027, EP, 50 DURO - GREY	PART	1
11	13871	AERATOR SHELL	PART	1
12	91020	O-RING, #2-016, EPDM, 65-75 DURO, NSF 61	PART	1
13	12407	CACHE AERATOR INSERT, TINY Jr. SIZE, 1.2 GPM	PART	1
14	91571	AERATOR KEY	PART	1



TESTING	-	-	-
ASSEMBLY	-	-	-
PLATING	-	-	-
POLISHING	-	NEXT ASSY	USED ON
MACHINING	-	APPLICATION	
TOOLING FIXTURE #		REMOVE ALL BURRS AND SHARP EDGES	

UNITS ARE: INCHES [MM]
 TOLERANCES ARE:
 FRACTIONS DECIMALS ANGLES
 ±1/16" .X ±.1 [2.5] ±1°
 .XX ±.06 [1.5]
 (X.XXX) DENOTES CRITICAL DIMS.
 ALL THREADS ARE CRITICAL

DRAWN G.B. 12/21/22
 CHECKED J.M. 12/21/22
 APPROVED J.M. 12/21/22

BRASSTECH 2001 CARNEGIE AVE.
 INCORPORATED SANTA ANA, CA 92705
 (949) 417-5207

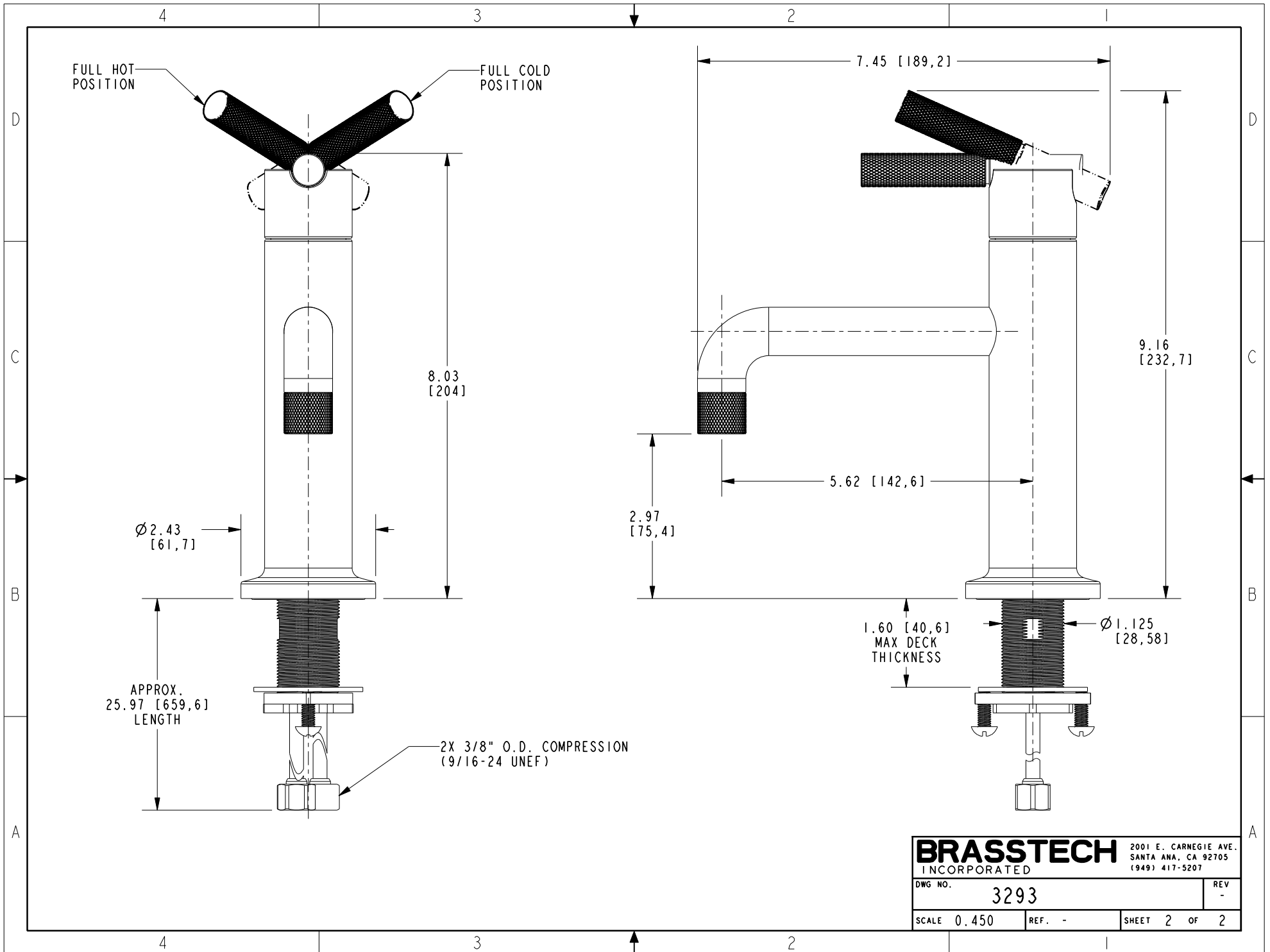
SINGLE HOLE FAUCET

DWG NO. **3293** REV -

SCALE 0.250 REF. - SHEET 1 OF 2

COPYRIGHT 2005 BRASSTECH, INC.
 THESE DRAWINGS AND THE DESIGNS
 DEPICTED HEREIN ARE THE PROPRIETARY
 PROPERTY OF BRASSTECH. ANY USE
 OR REPRODUCTION IS SUBJECT TO
 THE EXPRESS APPROVAL OF BRASSTECH.
 UNAUTHORIZED USE IS STRICTLY
 PROHIBITED. ALL RIGHTS RESERVED.

EN-4598	12/21/22	J.M.		
ZONE	REV	DESCRIPTION	DATE	APPROVED



BRASSTECH		2001 E. CARNEGIE AVE.	
INCORPORATED		SANTA ANA, CA 92705	
DWG NO. 3293		REV -	
SCALE 0.450	REF. -	SHEET 2 OF 2	