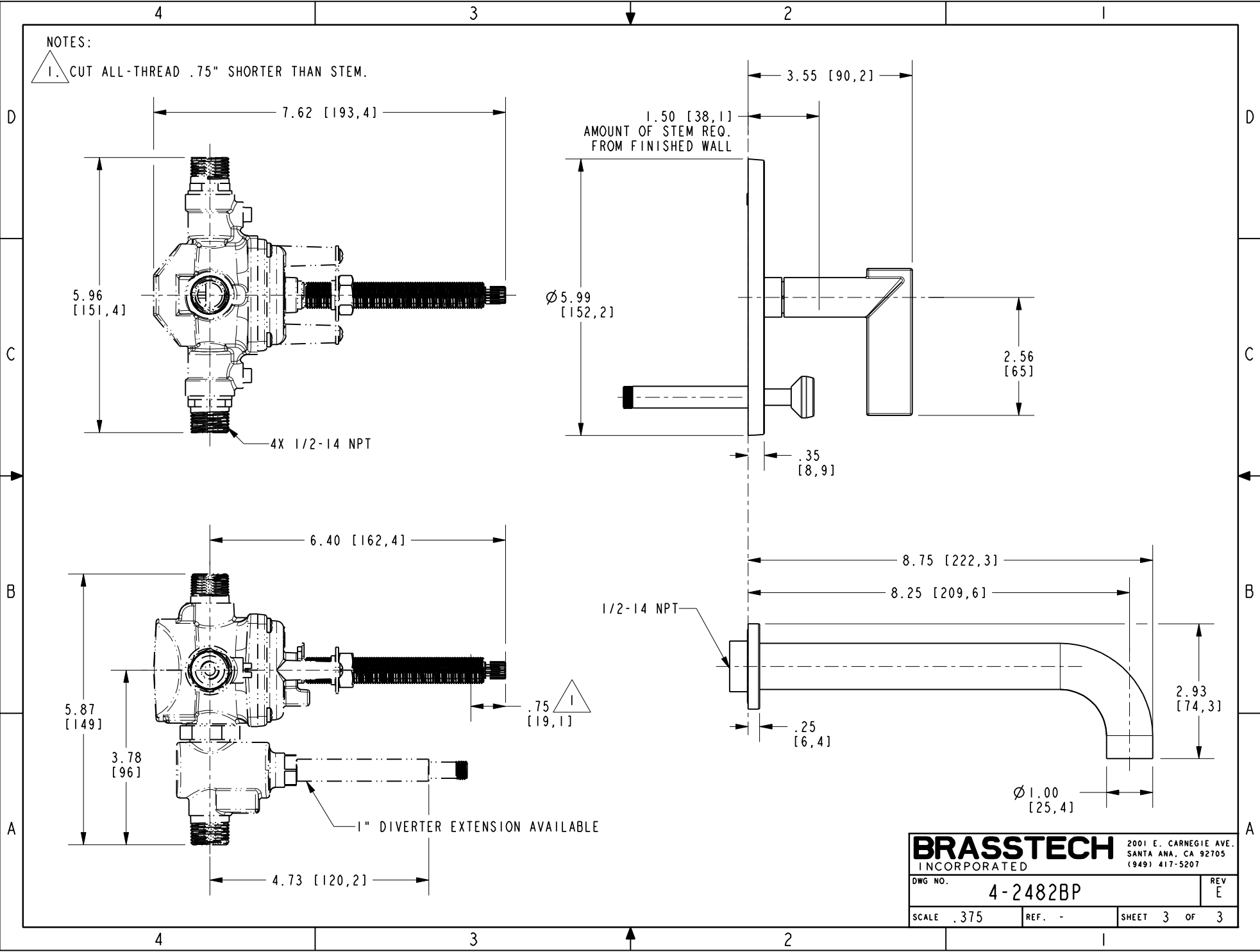


NOTES:

1. CUT ALL-THREAD .75" SHORTER THAN STEM.



<b>BRASSTECH</b>		2001 E. CARNEGIE AVE.	
INCORPORATED		SANTA ANA, CA 92705	
DWG NO. 4-2482BP		REV E	
SCALE .375	REF. -	SHEET 3 OF 3	