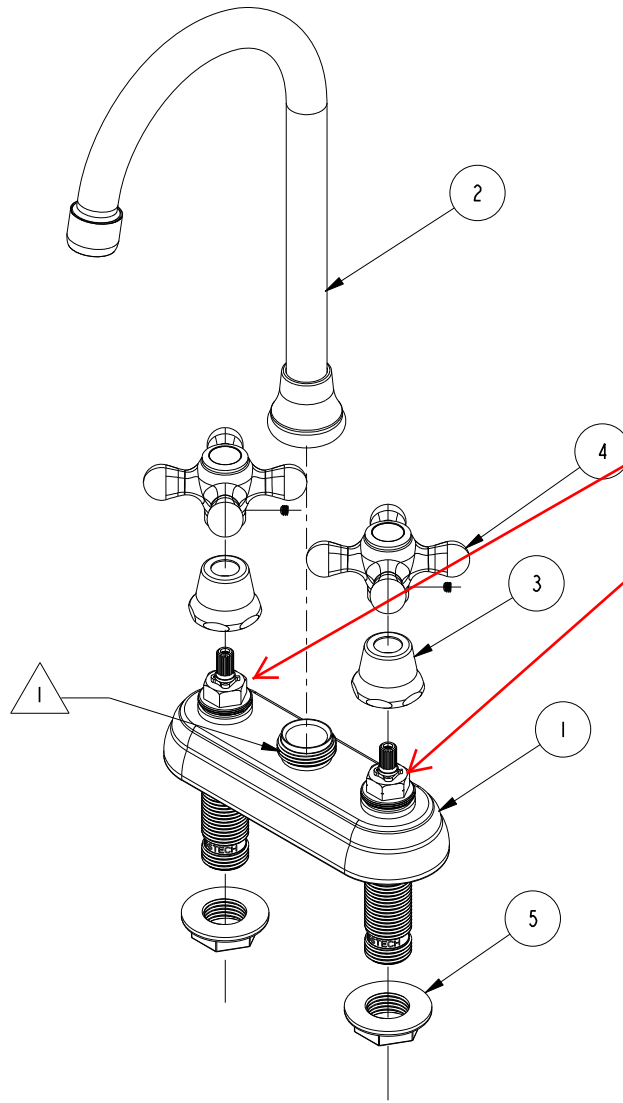


NOTES:

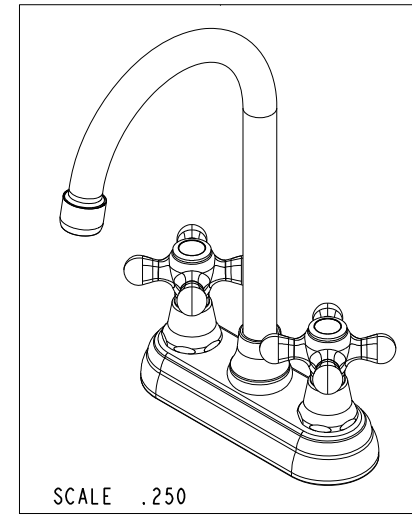
1. APPLY LOCTITE 680.

BILL OF MATERIAL (CURRENT LEVEL)

| ITEM | PT/ASSY | DESCRIPTION | TYPE | QTY. |
|------|---------|--------------------------|----------|------|
| 1 | 2-228 | BAR BODY ASM - 4" | ASSEMBLY | 1 |
| 2 | 2-132 | BAR SPOUT ASM | ASSEMBLY | 1 |
| 3 | 10331 | BONNET FOR 933, 934 | PART | 2 |
| 4 | 2-222 | CROSS HANDLE - PLUMBTRIM | ASSEMBLY | 2 |
| 5 | 91061 | FLANGE NUT 1/2-14 NPSM | PART | 2 |



This faucet is obsolete. However, if there is an order, replace these 2 cartridges with AB1-001 and AB1-002



COPYRIGHT 2005 BRASSTECH, INC. THESE DRAWINGS AND THE DESIGNS DEPICTED HEREIN ARE THE PROPRIETARY PROPERTY OF BRASSTECH. ANY USE OR REPRODUCTION IS SUBJECT TO THE EXPRESS APPROVAL OF BRASSTECH. UNAUTHORIZED USE IS STRICTLY PROHIBITED. ALL RIGHTS RESERVED.

BRASSTECH
INCORPORATED
2001 E. CARNEGIE AVE.
SANTA ANA, CA 92705
(949) 417-5207

BAR FAUCET WITH CROSS HANDLE

ASSY. NO. 7008X

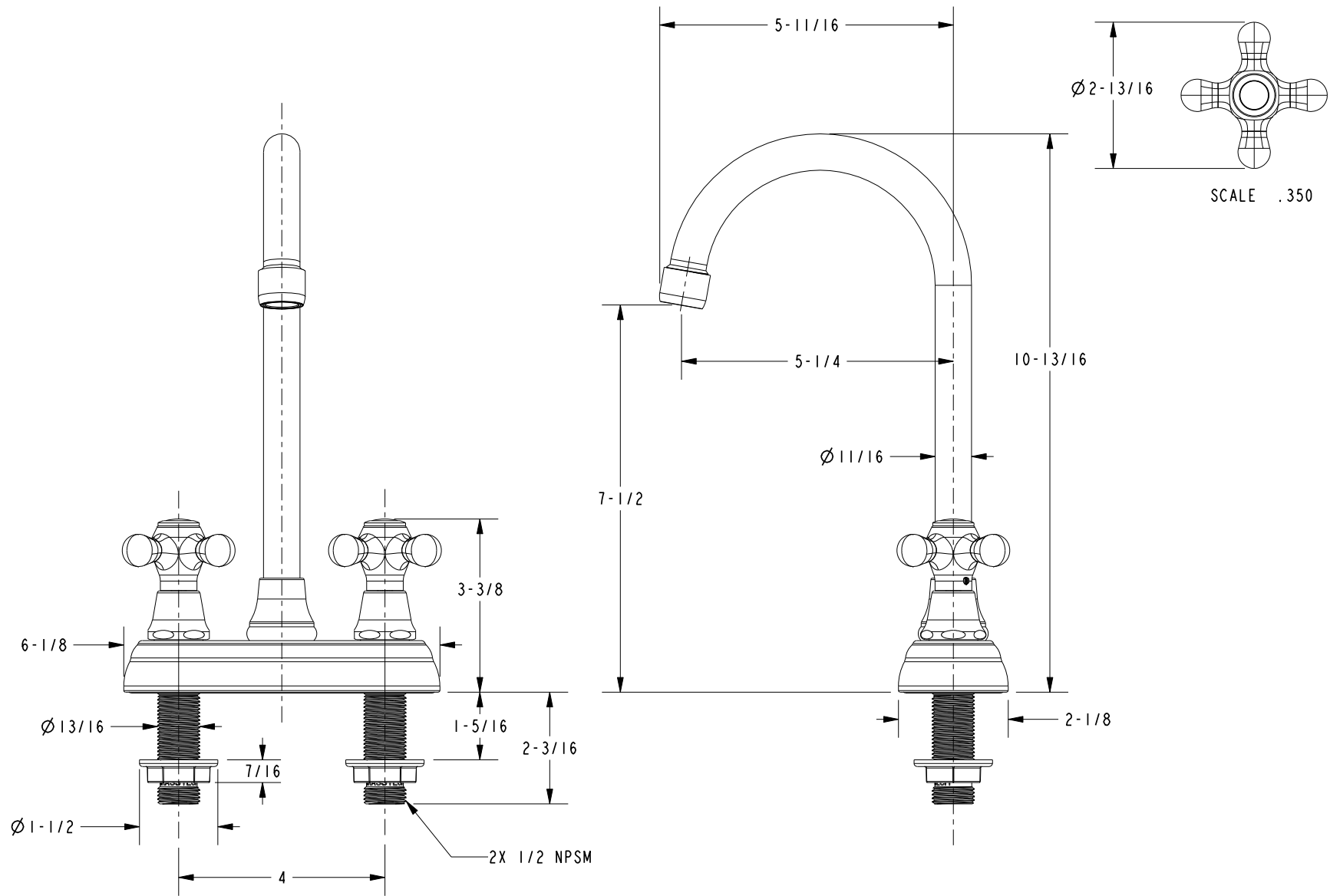
SCALE .300

REF. -

SHEET 1 OF 2

| | | |
|-----|----------|----------|
| B | EN-1919a | 08/12/14 |
| A | EO-0475 | 02/10/05 |
| - | RELEASED | 05/10/02 |
| REV | REV DESC | DATE |

SPECIFICATION DWG



DIMENSIONS ARE IN INCHES AND AN APPROXIMATION OF A TYPICAL INSTALLATION

COPYRIGHT 2005 BRASSTECH, INC. THESE DRAWINGS AND THE DESIGNS DEPICTED HEREIN ARE THE PROPRIETARY PROPERTY OF BRASSTECH. ANY USE OR REPRODUCTION IS SUBJECT TO THE EXPRESS APPROVAL OF BRASSTECH. UNAUTHORIZED USE IS STRICTLY PROHIBITED. ALL RIGHTS RESERVED.

| | | | |
|------------------|-------|---|--------|
| BRASSTECH | | 2001 CARNEGIE AVE. SANTA ANA, CA 92705 (949) 417-5207 | |
| INCORPORATED | | | |
| DWG NO. | 7008X | REV | B |
| SCALE | .350 | REF. | - |
| | | SHEET | 2 OF 2 |