

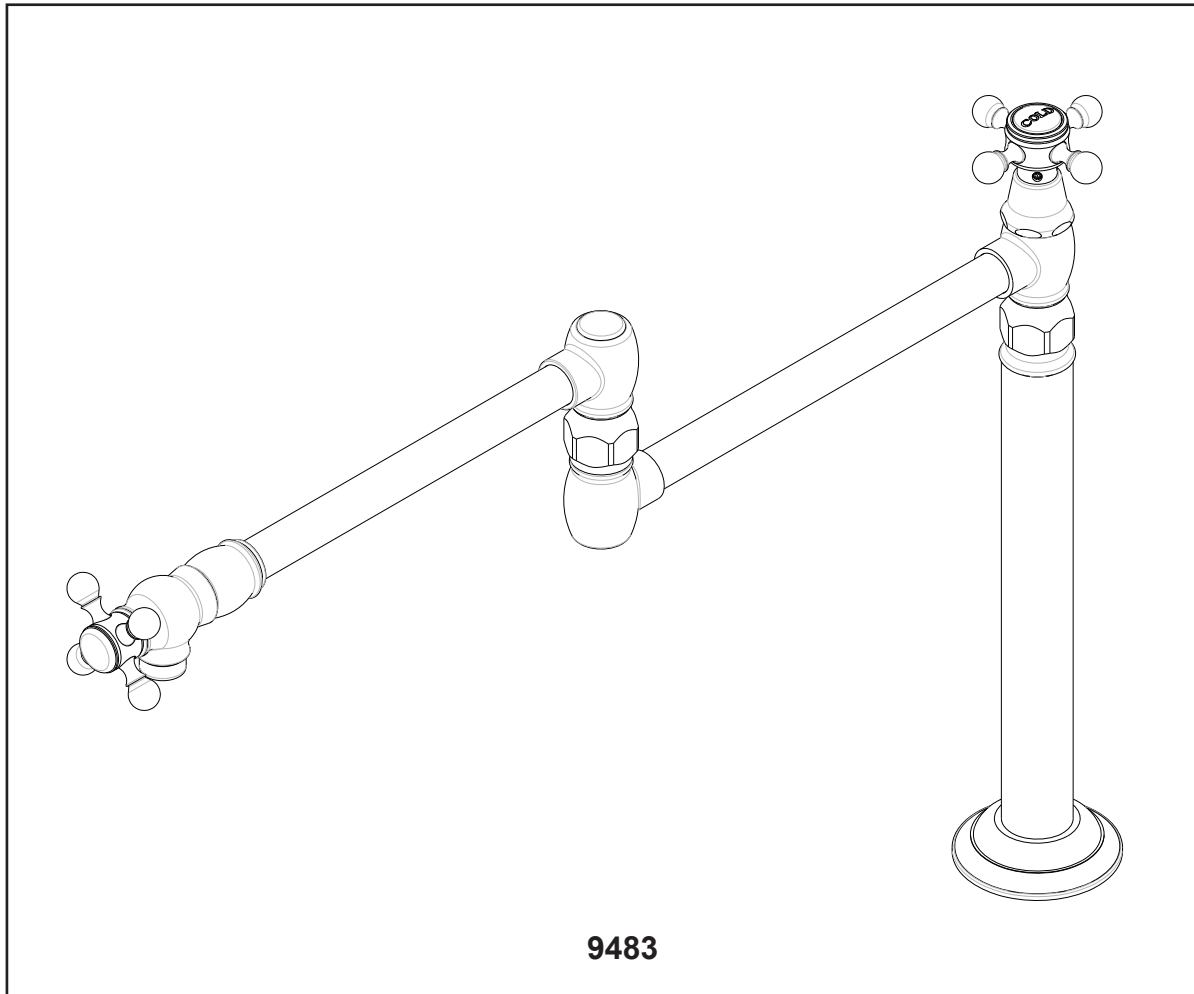
# INSTALLATION INSTRUCTIONS DECK MOUNT POT FILLER

NEWPORT BRASS®

*Flawless Beauty. From Faucet to Finish.™*

Model No's:

9483, 9484, 9486



**Congratulations on the purchase  
of your Newport Brass product,  
an excellent choice, that will give you  
years of quality service and enhance  
the look and style of your home.**

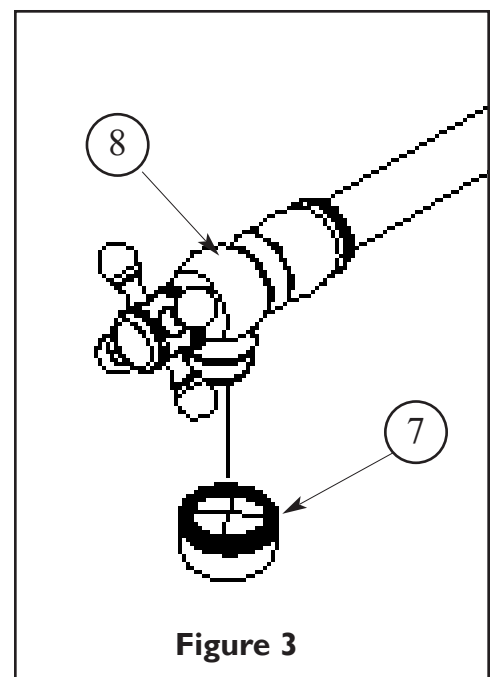
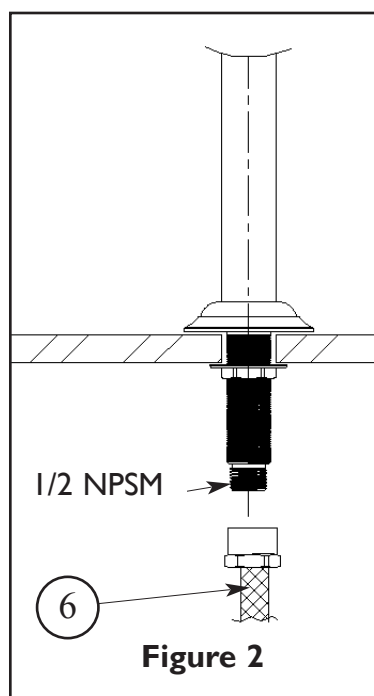
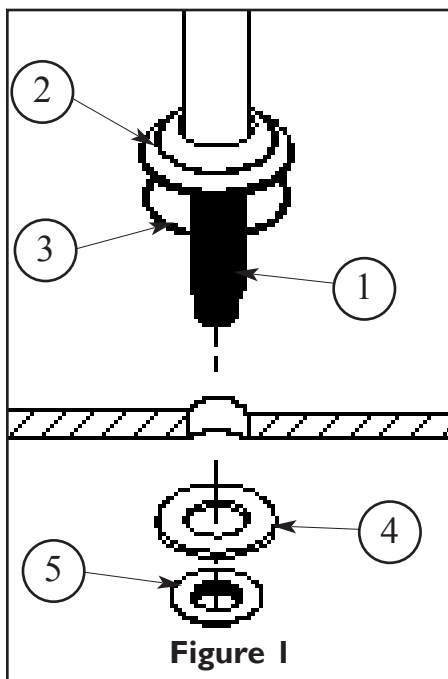
# Recommended Installation by a Professional Plumbing Contractor

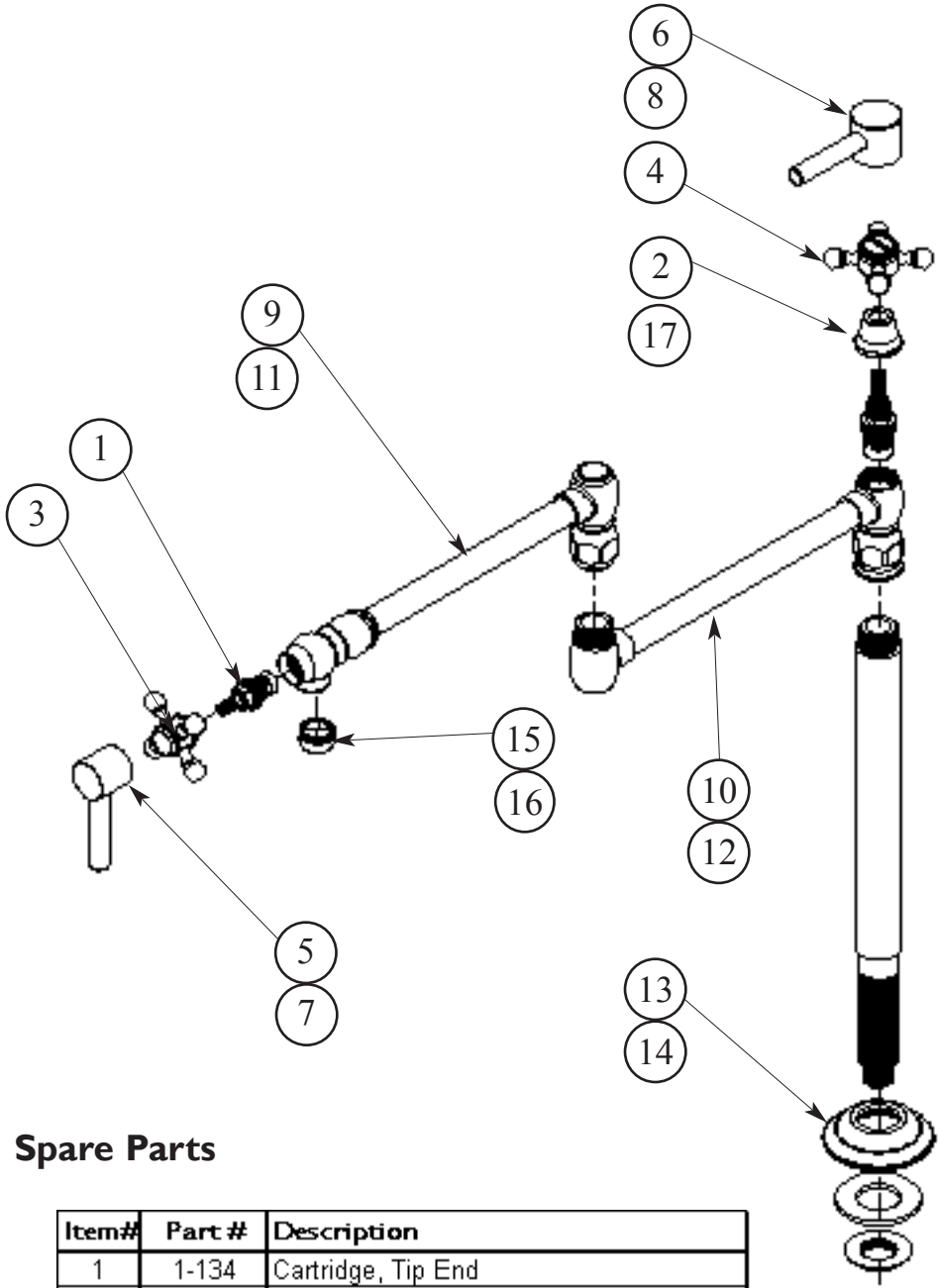
## Note:

- I. Countertops having a thickness of  $\frac{3}{4}$ " or less may require additional material reinforcement to allow for adequate load distribution.
- II. Pot filler may get hot when arm is positioned above the stove's burner. Swing the pot filler arm away from the stove after use.
- III. The use of petroleum based plumbers putty on this product will nullify the warranty. We recommend the use of silicone based sealing materials as needed.

## Installation:

1. Mark the location for the pot filler installation. Verify adequate reach of the faucet for your intended use, and the center of the location is at least 1.5" away from the wall, so the escutcheon will not interfere with the wall.
2. Drill a 1-1/8" (2.9cm) to 1-3/8" (3.5cm) hole at the marked location.
3. Verify the O-RING (3) is installed on the underside of ESCUTCHEON (2). If desired, sealant may be applied to the underside of the ESCUTCHEON (2).
4. Slide ESCUTCHEON (2) onto the faucet SHANK (1). Insert faucet SHANK (1) through the mounting hole.
5. Slide WASHER (4), from underside of mounting deck, onto faucet SHANK (1). Thread mounting NUT (5), from underside of mounting deck, onto faucet SHANK (1) and hand-tighten. See **Figure 1**.
6. Orient the faucet as desired and tighten mounting NUT (5) to secure.
7. Connect cold water SUPPLY (6), not supplied, to 1/2 NPSM connection is required. See **Figure 2**.
8. Turn on water supply, check for leaks and make adjustments as required.
9. Remove AERATOR (7) from SPOUT (8), open valve and flush pot filler of debris. See **Figure 3**.
10. Reattach AERATOR (7) to SPOUT (8).





**Spare Parts**

Item#	Part #	Description
1	1-134	Cartridge, Tip End
2	1-002	Cartridge, Deck End for 9483 & 9484
3	2-544	Cross Handle, Tip End for 9481
4	2-142	Cross Handle, Wall/Deck End for 9481
5	2-545	Lever Handle, Tip End for 9482
6	2-546	Lever Handle, Wall/Deck End for 9482
7	2-547	Lever Handle, Tip End for 9485
8	2-548	Lever Handle, Wall/Deck End for 9485
9	2-549	Upper Arm Assembly for 9481 & 9482
10	2-550	Lower Arm Assembly for 9481 & 9482
11	2-552	Upper Arm Assembly for 9485
12	2-553	Lower Arm Assembly for 9485
13	2-555	Flange for 9481 & 9482
14	2-556	Flange for 9485
15	2-518	Aerator for 9481 & 9482
16	2-276	Aerator for 9485
17	1-005	Cartridge, Deck End for 9486