

# Towel Bar / Towel Ring / Robe Hook Installation Instructions

**Model No. 29-01, 29-02, 29-04, 29-09, 29-12, 29-28**

Recommended Installation by a Professional Contractor

1. Using the table below, measure the appropriate distance between post centers. See Figure 1.

Note: Hole locations should be level.

- 18" Single Towel Bar - 18 9/16"
- 24" Single Towel Bar - 24 9/16"
- 18" Double Towel Bar - 18 5/8"
- Tissue holder (2 Post) - 6 1/4"

2. Drill hole(s) in wall at points marked using the appropriate drill size:

- Wood Screw (#6 x 2") - use: 3/32" Drill
- Toggle Screw (6-32 x 3") - use: 3/8" Drill

3. Dis-assemble END POST (4) and ESCUTCHEON (3) from FLANGE (1). Fasten FLANGE (1) to wall using either WOOD/TOGGLE SCREW (2). See Figure 2.

4. Engage POST (3) into FLANGE (1). Position POST (3) height to 2" from mounting surface. Secure POST (3) into place with SETSCREW (4). See Fig. 2.

5. Place ESCUTCHEON (3) onto END POST (4). See Figure 3.

**5a. Towel Bars:** Assemble TOWEL BAR (5) between END POST (4). Place END POST (4) with ESCUTCHEON (3) onto FLANGE (1). Secure into place with SETSCREW (6). See Figure 4.

**5b. Towel Ring / Robe Hook:** Place END POST (4) with ESCUTCHEON (3) onto FLANGE (1). Secure into place with SETSCREW (6). See Figure 5.

**5c. Tissue Holder:** Place END POST (4) with ESCUTCHEON (3) onto FLANGE (1). Secure into place with SETSCREW (6). Install Tissue Bar (5) between POSTS (4). See Figure 6.

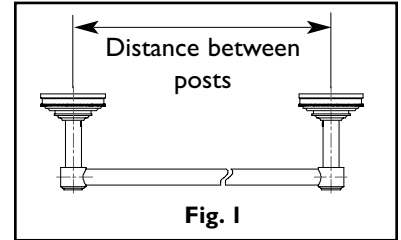


Fig. 1

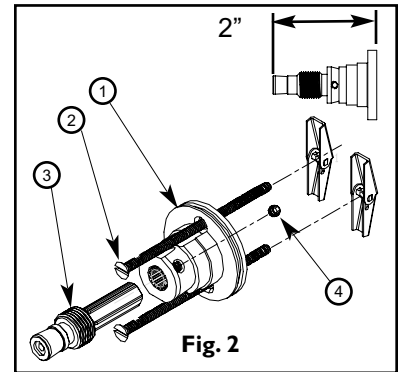


Fig. 2

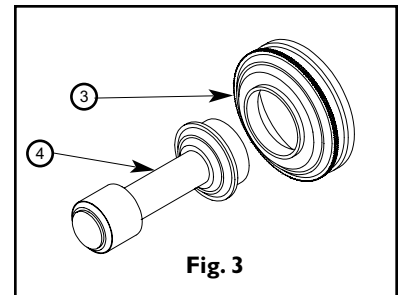


Fig. 3

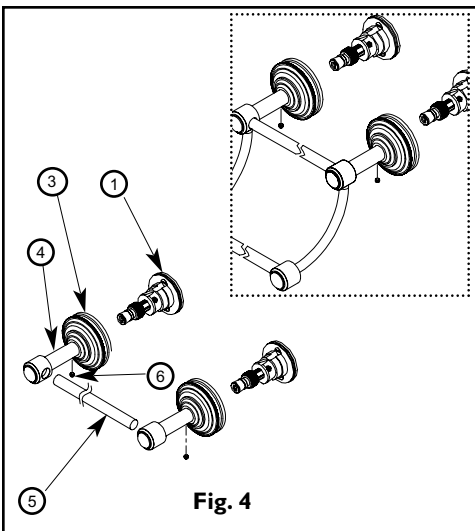


Fig. 4

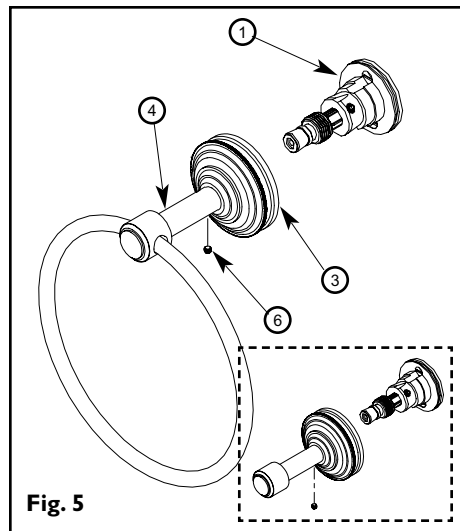


Fig. 5

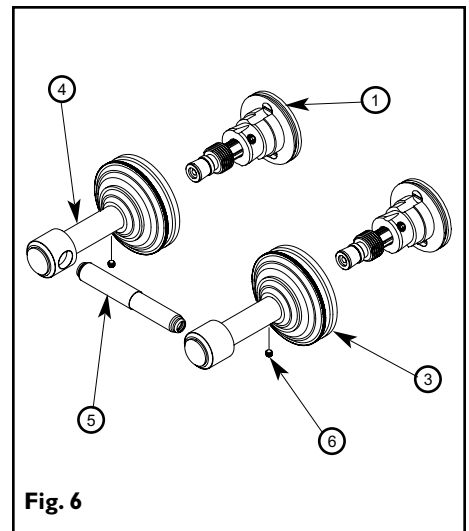


Fig. 6