
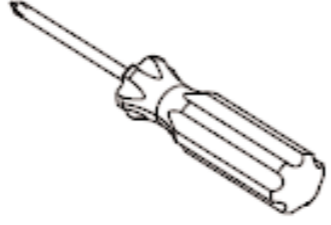

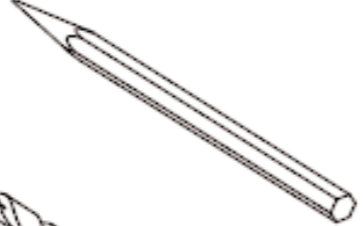

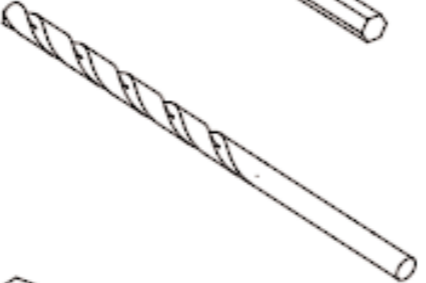

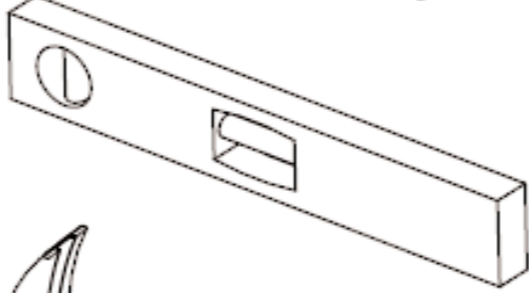

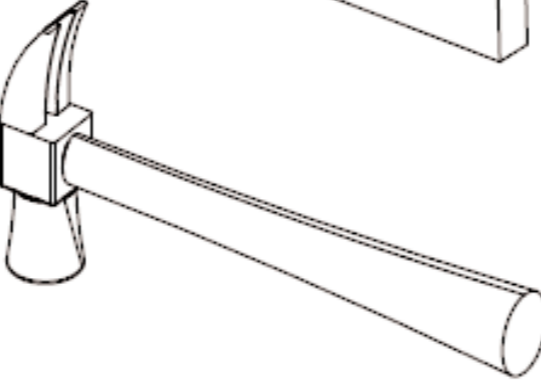
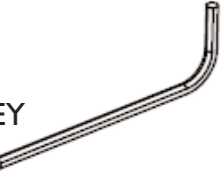
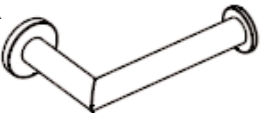


ITEMS INCLUDED		TOOLS REQUIRED	
DRY WALL ANCHOR	 X 2	PHILLIPS SCREW DRIVER	
TILE ANCHOR	 X 2	PEN / PENCIL	
#8 SCREW	 X 2	1/4" (6 mm) DRILL	
MOUNTING BRACKET	 X 1	LEVEL SET	
M6X1 SET SCREW	 X 1	HAMMER	
3MM HEX KEY	 X 1		
TISSUE HOLDER	 X 1		

PRIYA / KEATON

INSTALLATION INSTRUCTIONS

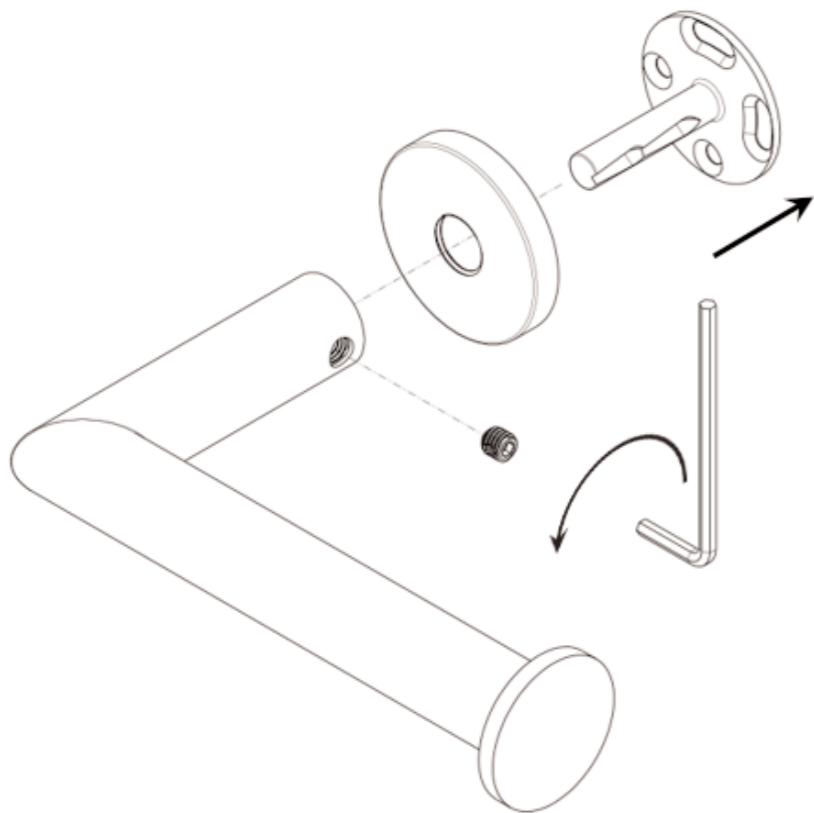
36-27

TISSUE HOLDER

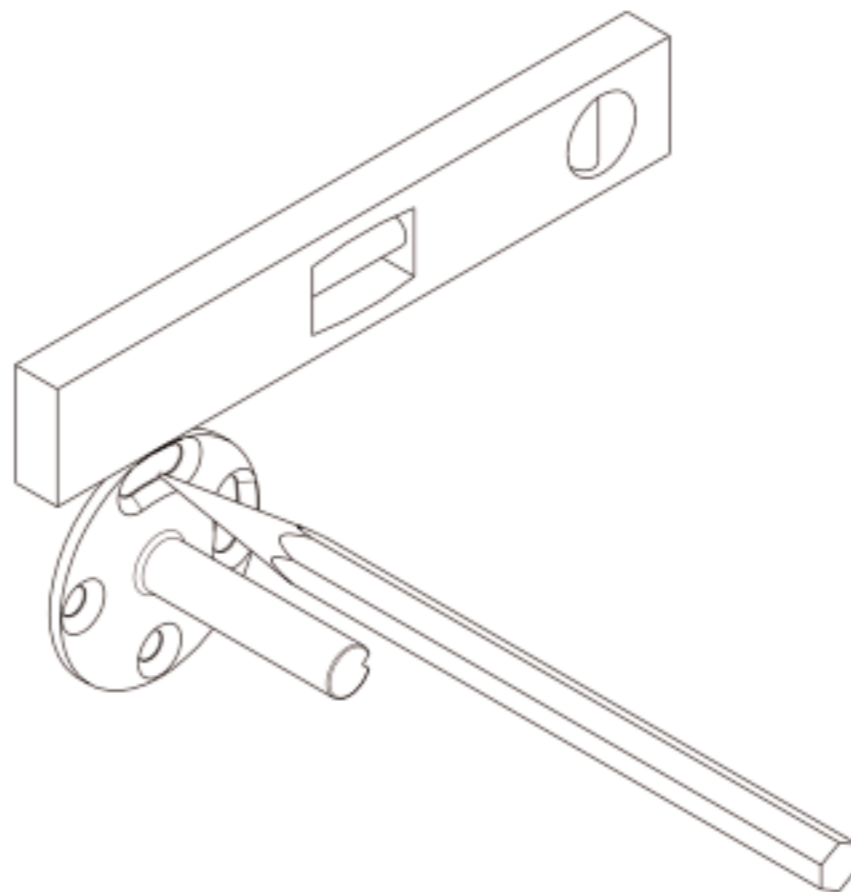
NEWPORT BRASS
 Flawless Beauty. From Faucet to Finish.™

2001 CARNEGIE AVE, SANTA ANA CA 92705
 (949) 417-5207
 WWW.NEWPORTBRASS.COM

1 REMOVE MOUNTING BRACKETS

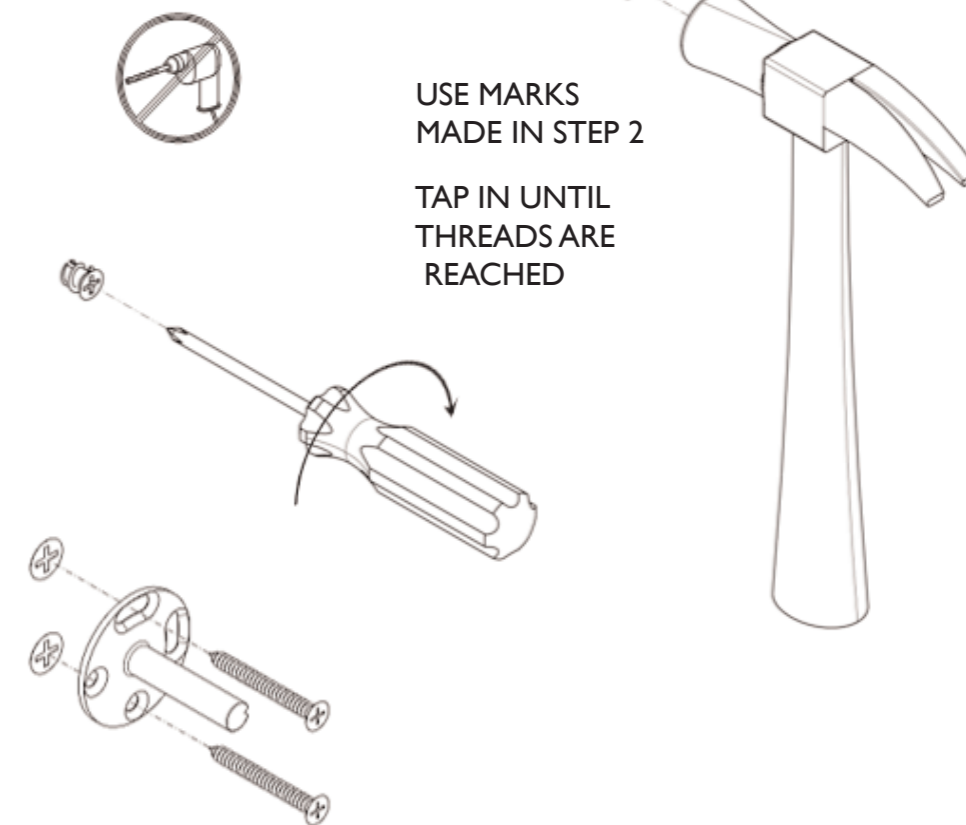


2 ALIGN MOUNTING BRACKETS AND MARK LOCATION



3 DRY WALL INSTALLATION

DO NOT DRILL

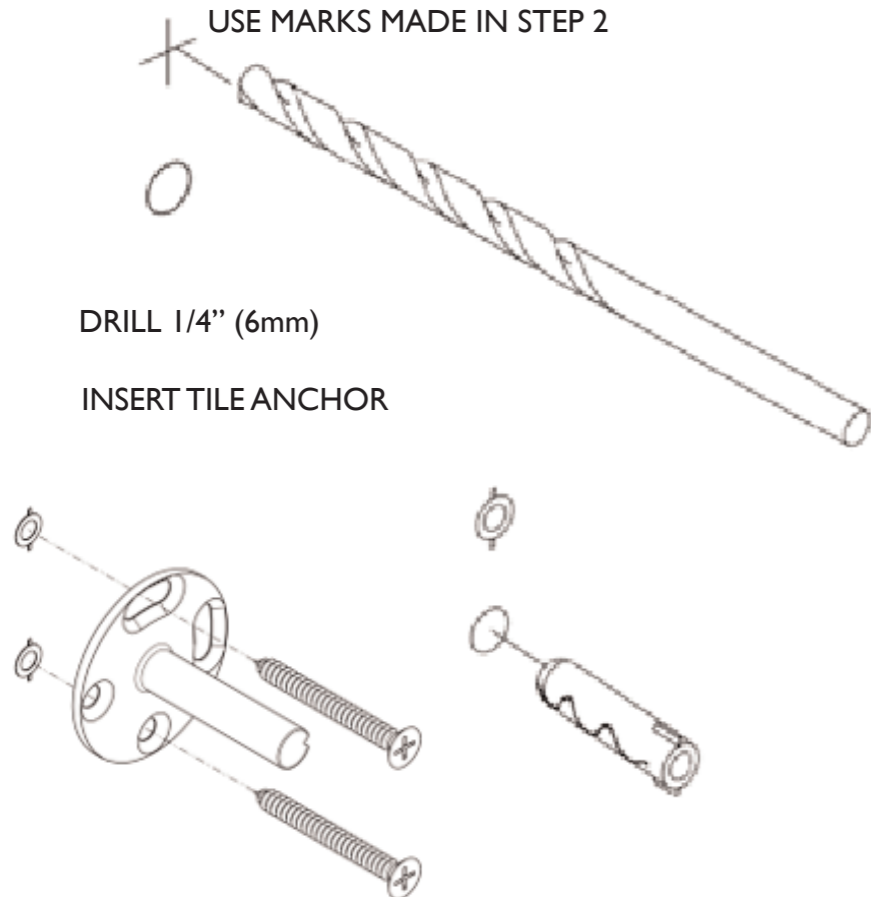


4 TILE OR SOLID WALL INSTALLATION

USE MARKS MADE IN STEP 2

DRILL 1/4" (6mm)

INSERT TILE ANCHOR



5 INSTALL PRODUCT ONTO BRACKETS REGISTER ROSETTE ONTO POST AND PRESS LIGHTLY DURING INSTALLATION.

