

**Towel Ring**  
**19-09**

**Features**

- Solid brass construction
- Single-post, horizontal pivot design with hanging, closed ring
- Complements Cube 2 product series

**Codes / Standards Compliance**

Meets or exceeds the following at date of manufacture:

- All applicable US Federal and State material regulations

**Colors / Finishes**

- 10B: Oil Rubbed Bronze
- 15: Polished Nickel
- 15S: Satin Nickel - PVD
- 26: Polished Chrome
- Other: Refer to the Newport Brass catalog for additional color/finish options.



**Specified Model**

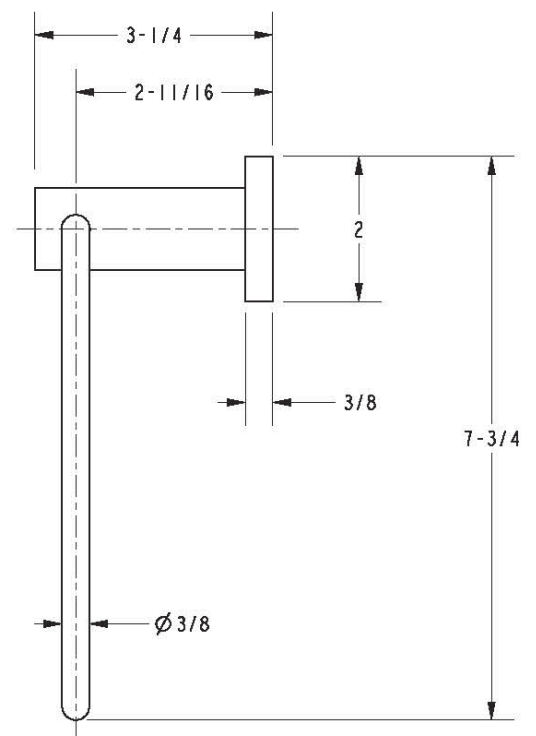
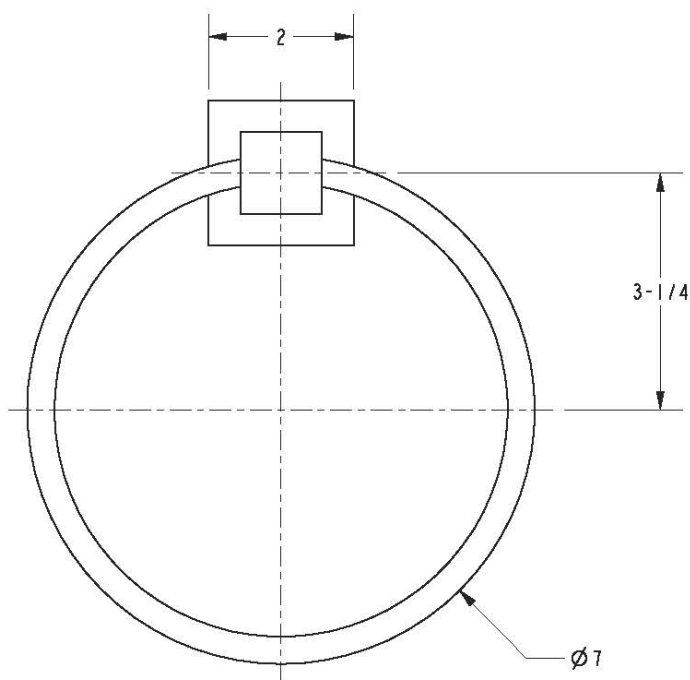
Model	Description	Colors   Finishes
19-09	Towel Ring	<input type="checkbox"/> 10B <input type="checkbox"/> 15 <input type="checkbox"/> 15S <input type="checkbox"/> 26 <input type="checkbox"/> Other

**Product Specification:** Add "Color / Finish" suffix to Model number, below.

The Towel Ring shall be made of solid brass construction and incorporate a single-post, horizontal pivot design with hanging, closed ring. Towel Ring shall complement Newport Brass Cube 2 product series. Towel Ring shall be Newport Brass Model 19-09/\_\_\_\_\_.

# 19-09

## PRODUCT DIMENSIONS *(Units are in inches)*



### Cube 2 Towel Ring 19-09