

# NEWPORT BATH

## Wall Tub Spout **2201**

### Features

- Solid brass construction
- 6.71" (17.0 cm) spout length
- 1/2" NPT inlet fitting
- Complements Seaport product series

### Codes / Standards Compliance

Meets or exceeds the following at date of manufacture:

- All applicable US Federal and State material regulations



### Colors / Finishes

- 10B: Oil Rubbed Bronze
- 15: Polished Nickel
- 15S: Satin Nickel - PVD
- 26: Polished Chrome
- Other: Refer to the Newport Brass catalog for additional color/finish options.

### Specified Model

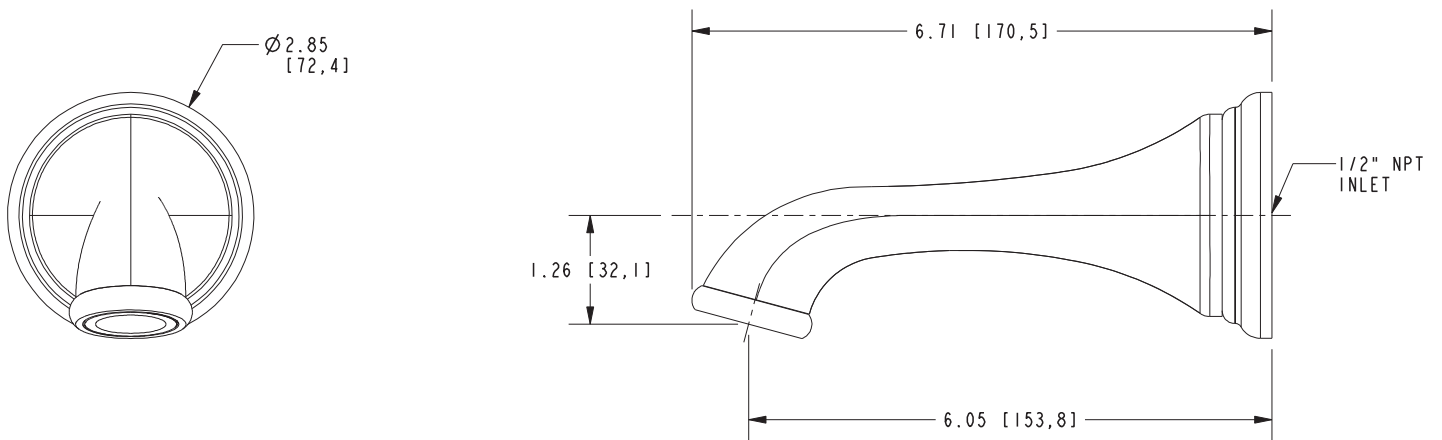
Model	Description	Colors   Finishes
2201	Wall Tub Spout	<input type="checkbox"/> 10B <input type="checkbox"/> 15 <input type="checkbox"/> 15S <input type="checkbox"/> 26 <input type="checkbox"/> Other

### Product Specification Add "Color / Finish" suffix to Model number, below.

The Wall-Mounted Tub Spout shall be made of solid brass construction. Tub spout shall have a length of 6.71" (17.0 cm) and incorporate a 1/2" NPT inlet fitting. Tub Spout shall be Newport Brass Model 2201/\_\_\_\_\_.

# 2201

## PRODUCT DIMENSIONS *(Units are in inches)*



### Newport Bath Wall Tub Spout 2201