

NEWPORT BRASS

Features

- Solid brass construction
- Forged brass body with integral spout and handles
- Quarter-turn washerless ceramic disc valve cartridges
- ADA compliant traditional cross handles
- Spout assembly with integral valve inlet fittings
- Pop-up drain with tailpiece
- 1-11/16" (4.3 cm) spout height at outlet
- 4-5/8" (11.7 cm) spout reach (c-c)
- For 4" (10.2 cm) centers
- 1.2 gallons (4.5 liters) per minute maximum flow rate

Codes / Standards Compliance

Meets or exceeds the following at date of manufacture:

- ASME A112.18.1/CSA B125.1
- IAPMO/cUPC
- IPC
- NSF 61
- ADA
- ICC/ANSI A117.1
- Energy Policy Act of 1992
- All applicable US Federal and State material regulations
- EPA Watersense

Centerset Lavatory Faucet

7001X



Colors / Finishes

- 10B: Oil Rubbed Bronze
- 15: Polished Nickel
- 15S: Satin Nickel - PVD
- 26: Polished Chrome
- Other: Refer to the Newport Brass catalog for additional color/finish options.

Specified Model

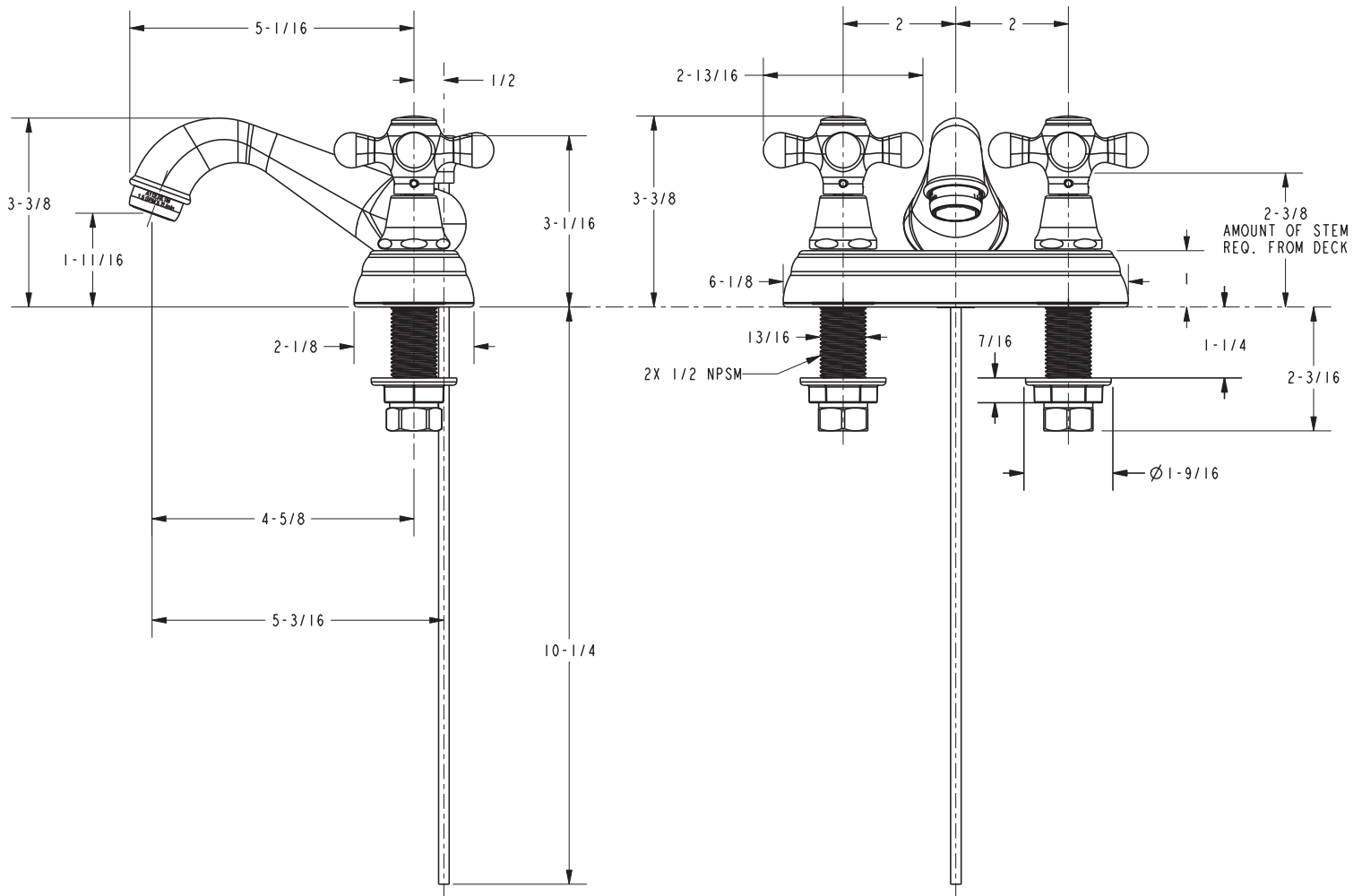
Model	Description	Colors Finishes
7001X	Centerset Lavatory Faucet	<input type="checkbox"/> 10B <input type="checkbox"/> 15 <input type="checkbox"/> 15S <input type="checkbox"/> 26 <input type="checkbox"/> Other

Product Specification Add "Color / Finish" suffix to Model number, below.

The Centerset Lavatory Faucet shall be made of solid brass construction. Faucet shall feature a forged brass body incorporating quarter-turn washerless ceramic disc valve cartridges. Faucet shall have a 1.5 gallon (5.7 liter) per minute maximum flow rate. Product shall be for 4" (10.2 cm) centers. Product shall incorporate a 1-11/16" (4.3 cm) spout height at outlet and a 4-5/8" (11.7 cm) spout reach (c-c). Faucet shall include a pop-up drain with tailpiece and incorporate ADA compliant traditional cross handles. Centerset Lavatory Faucet shall be Newport Brass Model 7001X/_____.

7001X

PRODUCT DIMENSIONS *(Units are in inches)*



Newport 365 Centerset Lavatory Faucet 7001X