

# CHESTERFIELD

BAR FAUCET ASM

# 928

## Features

Solid brass construction  
Forged brass body with integral rotating spout and handles  
Quarter-turn washerless ceramic disc valve cartridges  
ADA compliant traditional cross handles  
8.37" (21,3 cm) spout height at outlet  
5.27" (13,4 cm) spout reach (c-c)  
For single hole configurations  
ADA Compliant  
1.8 GPM (6.8LPM) Max



## Codes / Standards Compliance

Meets or exceeds the following at date of manufacture:

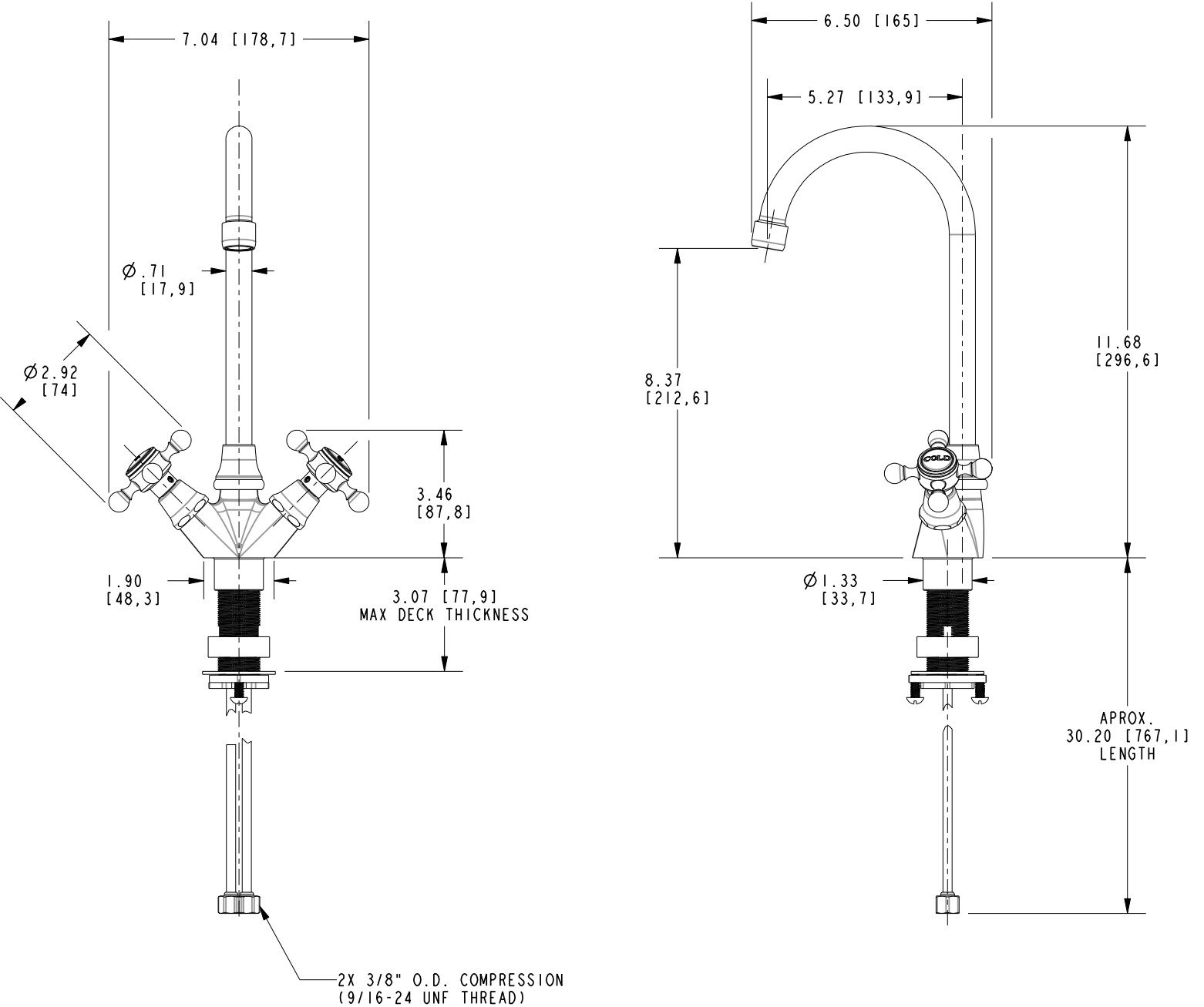
ASME A112.18.1/CSA B125.1  
IAMPO/cUPC  
NSF/ANSI/CAN 61, SECTION 9  
NSF/ANSI 372  
IPC  
ADA & ICC/ANSI A117.1  
Energy Policy Act of 1992  
California Energy Commission  
All applicable US Federal and State material regulations



# 928

## PRODUCT DIMENSIONS (Units are in inches)

Product Dimensions are provided for reference only. For specific product installation guidelines, please reference the Installation Instructions of the product being installed.



BAR FAUCET ASM

928

Page 2 of 2  
EN- 4975  
REV J

**NEWPORT BRASS**  
Flawless Beauty. From Faucet to Finish.

t: 949.417.5207 | [www.newportbrass.com](http://www.newportbrass.com)  
©2024 Brasstech, Inc.