



CONTEMPORARY 36" SLIDE BAR HANDSHOWER KIT

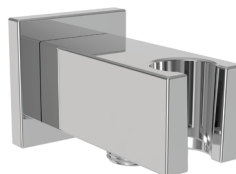


Featured in Oil Rubbed Bronze (10B Finish)

280T

GROUP I	GROUP II	GROUP III
\$842	\$1,179	\$1,473

CONTEMPORARY SUPPLY ELBOW & HOLDER



Square



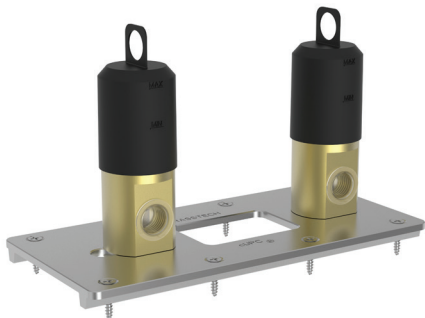
Round

Featured in Polished Chrome (26) Finish

	GROUP I	GROUP II	GROUP III
3-671 Square	\$226	\$341	\$406
3-672 Round	\$226	\$341	\$406

OPTIONAL ROUGH FOR EXPOSED TUB FILLER

For subfloor or concrete floor installations



1-378

GROUP I	GROUP II	GROUP III
\$356	-	-

PIVOTING WASTE & OVERFLOW



Featured in French Gold (24A) Finish



Featured in Satin Nickel (15S) Finish

	GROUP I	GROUP II	GROUP III
111-2961	\$589	\$755	\$999
111-2962	\$589	\$755	\$999

NEWPORT BRASS®

Flawless Beauty. From Faucet to Finish.™