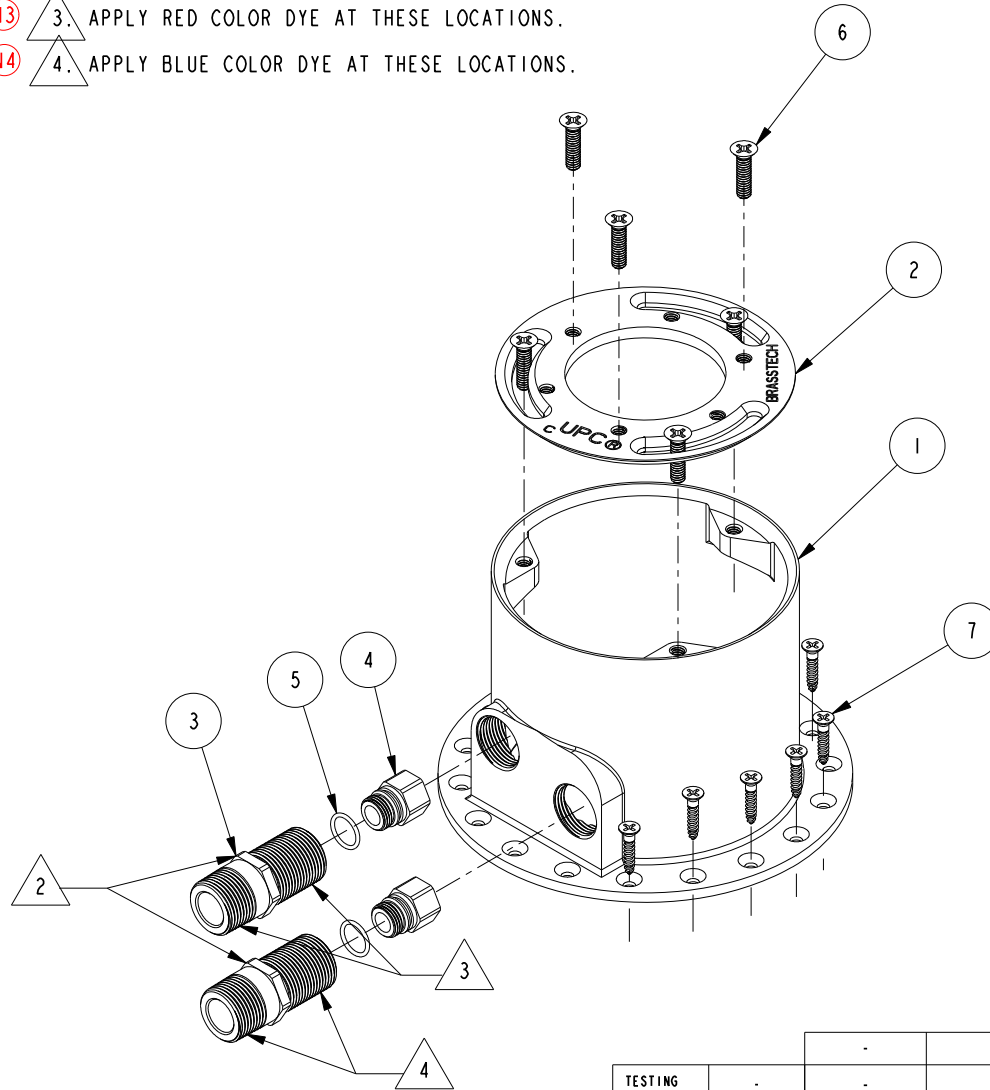


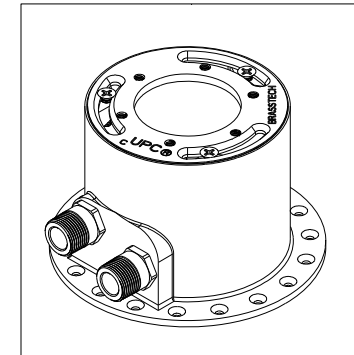
NOTES:

- (N1) 1. FIT / FORM / FUNCTION SHALL FOLLOW PS-E.008.
- (N2) 2. TORQUE 15-18 FT-LB.
- (N3) 3. APPLY RED COLOR DYE AT THESE LOCATIONS.
- (N4) 4. APPLY BLUE COLOR DYE AT THESE LOCATIONS.



BILL OF MATERIAL (CURRENT LEVEL)

ITEM	PT/ASSY	DESCRIPTION	TYPE	QTY.
1	12379	HOUSING, ROUGH	PART	1
2	12378	COVER PLATE, ROUGH	PART	1
3	12380	ADAPTER	PART	2
4	12381	PLUG	PART	2
5	91079	O-RING, #2- 015, EPDM, 65-75 DURO, NSF 61	PART	2
6	92831	SCREW, 1/4-20 X 1 PHL FLT HD SS	PART	6
7	92832	SCREW, #10 X 1 PHL FLT HD SS	PART	6



TESTING	-	-	-	UNITS ARE: INCHES [MM]
ASSEMBLY	-	-	-	TOLERANCES ARE:
PLATING	-	-	-	FRACTIONS DECIMALS ANGLES
POLISHING	-	-	-	±1/16" .X ±.1 [2,5] ±1°
MACHINING	-	NEXT ASSY	USED ON	.XX ±.06 [1,3]
TOOLING FIXTURE #	-	-	-	(X.XXX) DENOTES CRITICAL DIMS.
				ALL THREADS ARE CRITICAL
				DRAWN H. LE 03/12/15
				CHECKED V. VU 03/12/15
				APPROVED V. VU 03/12/15
				APPLICATION REMOVE ALL BURRS AND SHARP EDGES

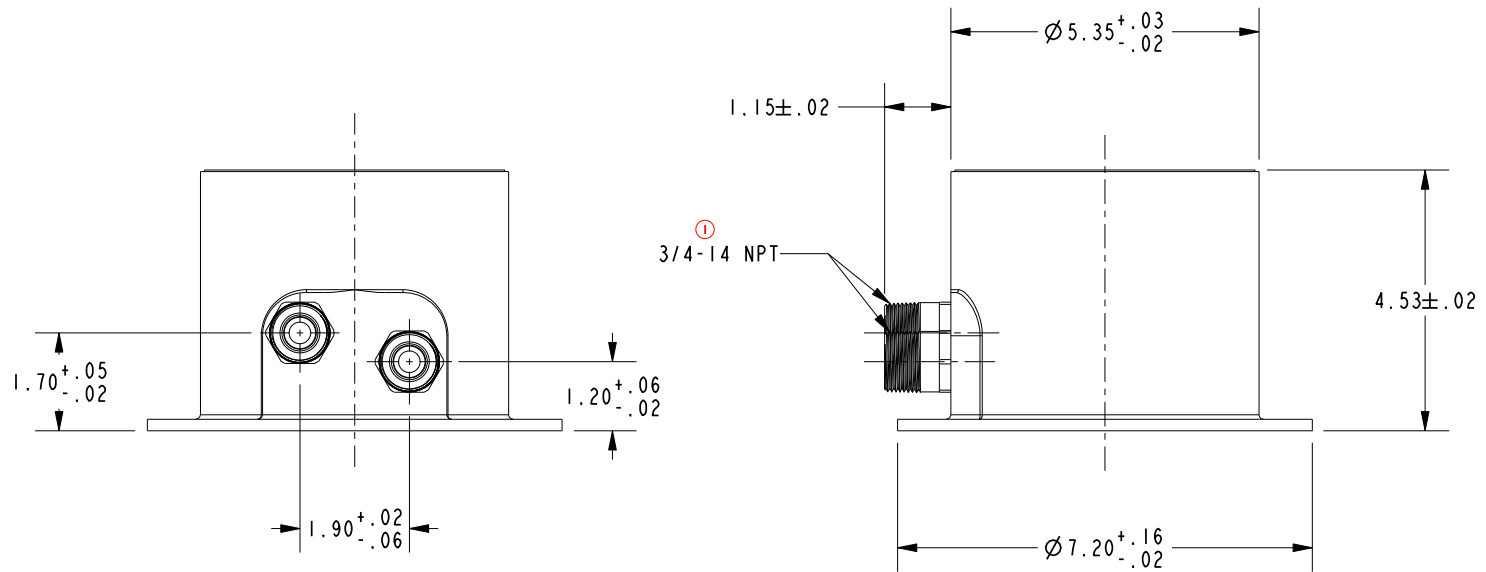
**BRASSTECH** 2001 CARNEGIE AVE.  
INCORPORATED SANTA ANA, CA 92705  
(949) 417-5207

TUB FILLER ROUGH

B	EN-2970	11/05/15	V.V.	COPYRIGHT 2005 BRASSTECH, INC. THESE DRAWINGS AND THE DESIGNS DEPICTED HEREIN ARE THE PROPRIETARY PROPERTY OF BRASSTECH. ANY USE OR REPRODUCTION IS SUBJECT TO THE EXPRESS APPROVAL OF BRASSTECH. UNAUTHORIZED USE IS STRICTLY PROHIBITED. ALL RIGHTS RESERVED.
A	EN-2934	08/07/15	V.V.	
-	EN-2862	03/12/15	V.V.	
ZONE	REV	DESCRIPTION	DATE	

DWG NO.	1-339	REV	B
SCALE	.300	REF.	-
SHEET	1	OF	2

**SPECIFICATION DWG**



DIMENSIONS ARE IN INCHES AND AN APPROXIMATION OF A TYPICAL INSTALLATION

COPYRIGHT 2005 BRASSTECH, INC. THESE DRAWINGS AND THE DESIGNS DEPICTED HEREIN ARE THE PROPRIETARY PROPERTY OF BRASSTECH. ANY USE OR REPRODUCTION IS SUBJECT TO THE EXPRESS APPROVAL OF BRASSTECH. UNAUTHORIZED USE IS STRICTLY PROHIBITED. ALL RIGHTS RESERVED.

<b>BRASSTECH</b>		2001 CARNEGIE AVE.
INCORPORATED		SANTA ANA, CA 92705
		(949) 417-5207
DWG NO.	1-339	REV B
SCALE .300	REF. -	SHEET 2 OF 2