

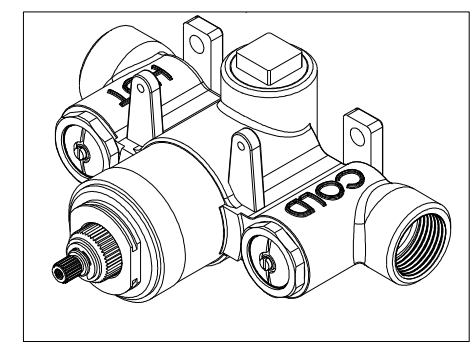
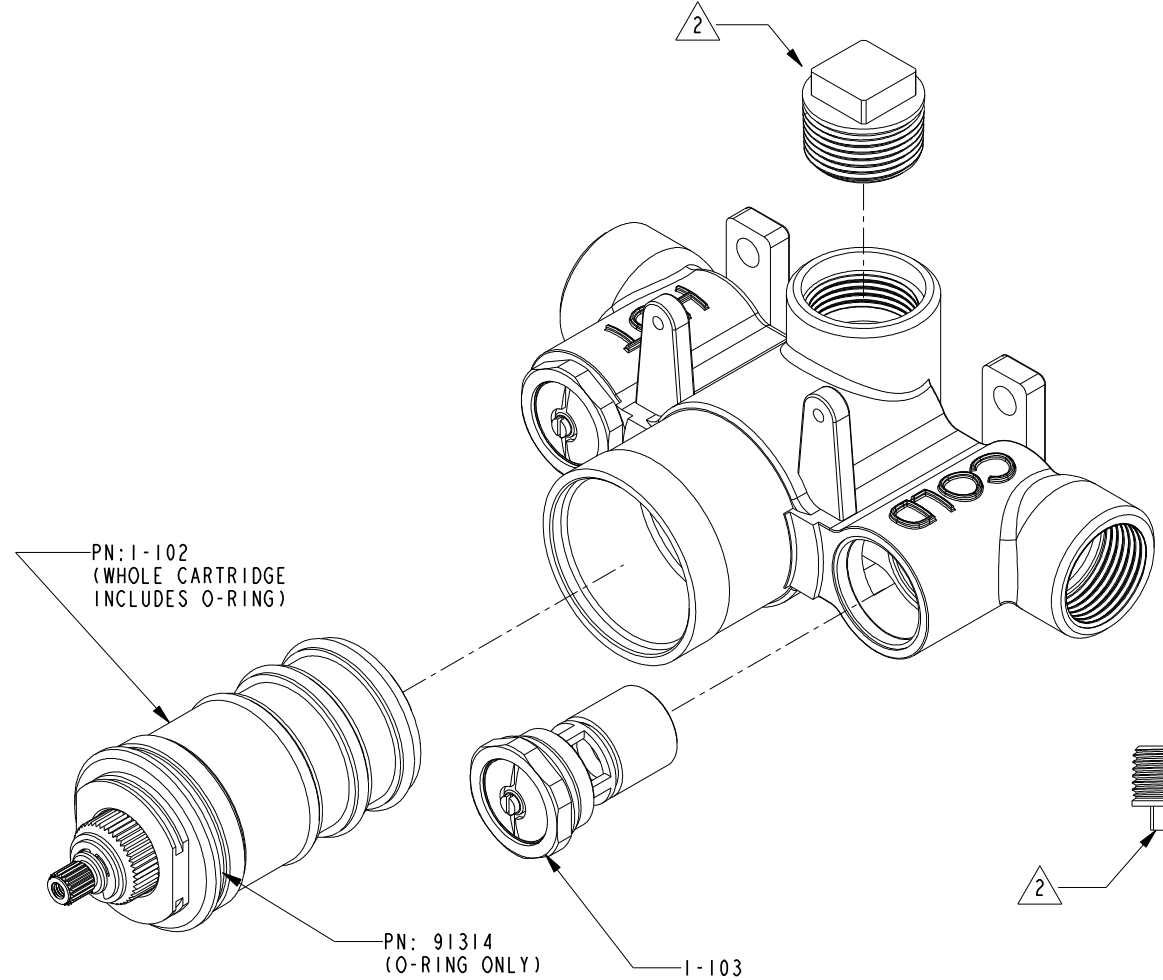
**BILL OF MATERIAL (CURRENT LEVEL)**

ITEM	PT/ASSY	DESCRIPTION	TYPE	QTY.
1	1-583	1-540 AS RECEIVED	ASSEMBLY	1
2	91796	MUDGUARD	PART	1
3	92299	SCRW, M4 X 0.7 X 8	SKIP PART	ALLOYIST

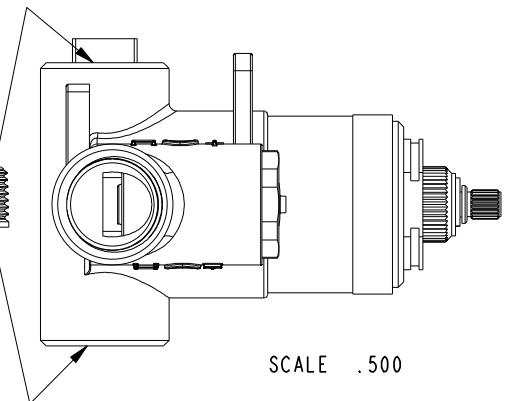
**NOTES:**

1. TO INSPECT ASSEMBLY, FOLLOW FIRST ARTICLE AND IN PROCESS INSPECTION SHEET.

2. FOR PROPER VALVE OPERATION, THE 3/4" NPT PLUG SUPPLIED WITH VALVE ASSY MUST BE USED ON ONE OF TWO OUTLET PORTS.



SCALE .375



SCALE .500

ZONE	REV	DESCRIPTION	DATE	APPROVED
-	E	EN-4300kk	03/24/21	R.S.
-	D	EN-4313	02/08/21	V.V.
-	C	EN-2854	09/16/16	J.M.
-	B	EN-2067	02/08/12	-
-	A	REF EO-0651	2/15/06	-
-	A	EO-0078	9/16/02	-
-	-	RELEASED	3/1/01	-

COPYRIGHT 2005 BRASSTECH, INC. THESE DRAWINGS AND THE DESIGNS DEPICTED HEREIN ARE THE PROPRIETARY PROPERTY OF BRASSTECH. ANY USE OR REPRODUCTION IS SUBJECT TO THE EXPRESS APPROVAL OF BRASSTECH. UNAUTHORIZED USE IS STRICTLY PROHIBITED. ALL RIGHTS RESERVED.

TESTING	-	-	-
ASSEMBLY	-	-	-
PLATING	-	3-1604tr	3-1604tr
POLISHING	-	NEXT ASSY	USED ON
MACHINING	-	APPLICATION	
TOOLING FIXTURE #	REMOVE ALL BURRS AND SHARP EDGES		

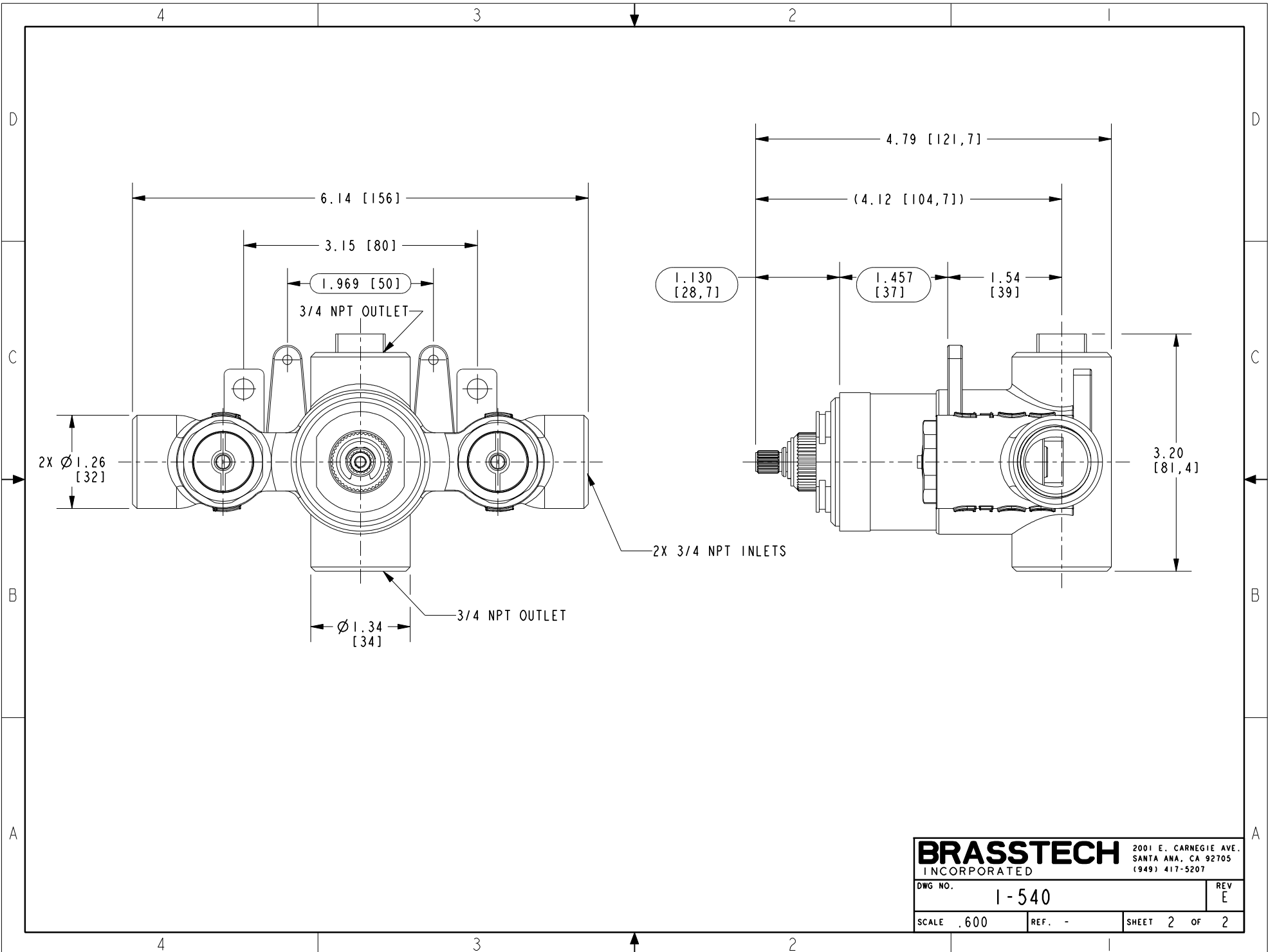
UNITS ARE: INCHES [MM]		
TOLERANCES ARE:		
FRACTIONS	DECIMALS	ANGLES
±1/16"	.X ±.1 [2.5]	±°
	.XX ±.06 [1.5]	
(X.XXX) DENOTES CRITICAL DIMS. ALL THREADS ARE CRITICAL		
DRAWN	VINAY	09/16/16
CHECKED	JINSON	09/16/16
APPROVED	J.M.	09/16/16

**BRASSTECH** 2001 CARNEGIE AVE. SANTA ANA, CA 92705 (949) 417-5207  
INCORPORATED

**THERMOSTATIC VALVE ASSEMBLY**

DWG NO. **1-540** REV **E**

SCALE .600 REF. - SHEET 1 OF 2



<b>BRASSTECH</b>		2001 E. CARNEGIE AVE. SANTA ANA, CA 92705 (949) 417-5207	
DWG NO.	1-540	REV	E
SCALE	.600	REF.	-
SHEET 2		OF 2	