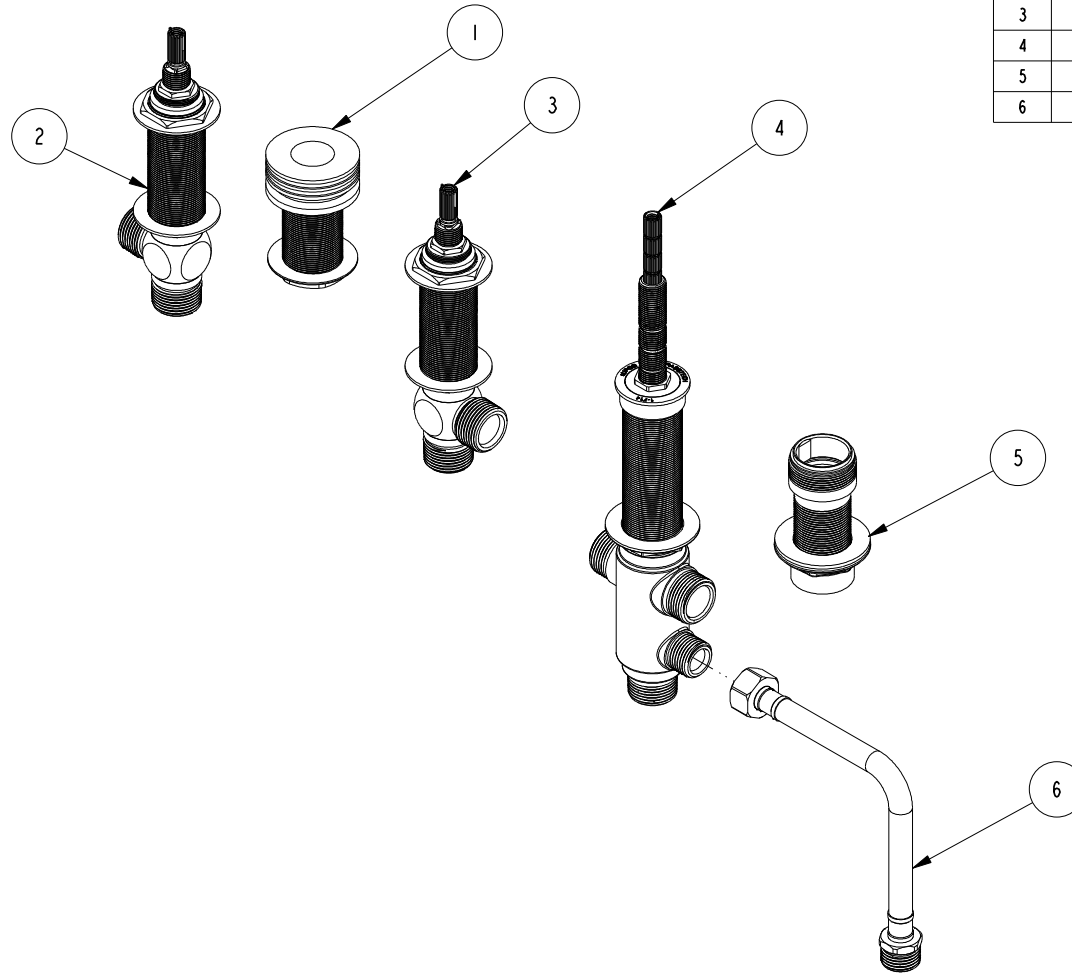


NOTES:

1. TO INSPECT ASSEMBLY, FOLLOW FIRST ARTICLE AND IN PROCESS INSPECTION SHEET.



BILL OF MATERIAL (CURRENT LEVEL)

ITEM	PT/ASSY	DESCRIPTION	TYPE	QTY.
1	1-163	R/T QUICK CONNECT ASM	ASSEMBLY	1
2	1-602	ROMAN TUB VALVE ASSY - HOT	ASSEMBLY	1
3	1-603	ROMAN TUB VALVE ASSY - COLD	ASSEMBLY	1
4	1-714	R/T VALVE DIVERTER	ASSEMBLY	1
5	5-011	MOUNTING HDW FOR DECK FLANGE	ASSEMBLY	1
6	12302	HOSE, 36 INCHES	ASSEMBLY	1

ZONE	REV	DESCRIPTION	DATE	APPROVED
-	D	EN-4300kk	03/23/21	R. S.
-	C	EN-4166	05/04/20	J. M.
-	B	EN-3222E	11/23/17	J. A.
-	A	EO-0775	12/01/06	-
-	-	EO-0744	07/14/06	-

COPYRIGHT 2005 BRASSTECH, INC. THESE DRAWINGS AND THE DESIGNS DEPICTED HEREIN ARE THE PROPRIETARY PROPERTY OF BRASSTECH. ANY USE OR REPRODUCTION IS SUBJECT TO THE EXPRESS APPROVAL OF BRASSTECH. UNAUTHORIZED USE IS STRICTLY PROHIBITED. ALL RIGHTS RESERVED.

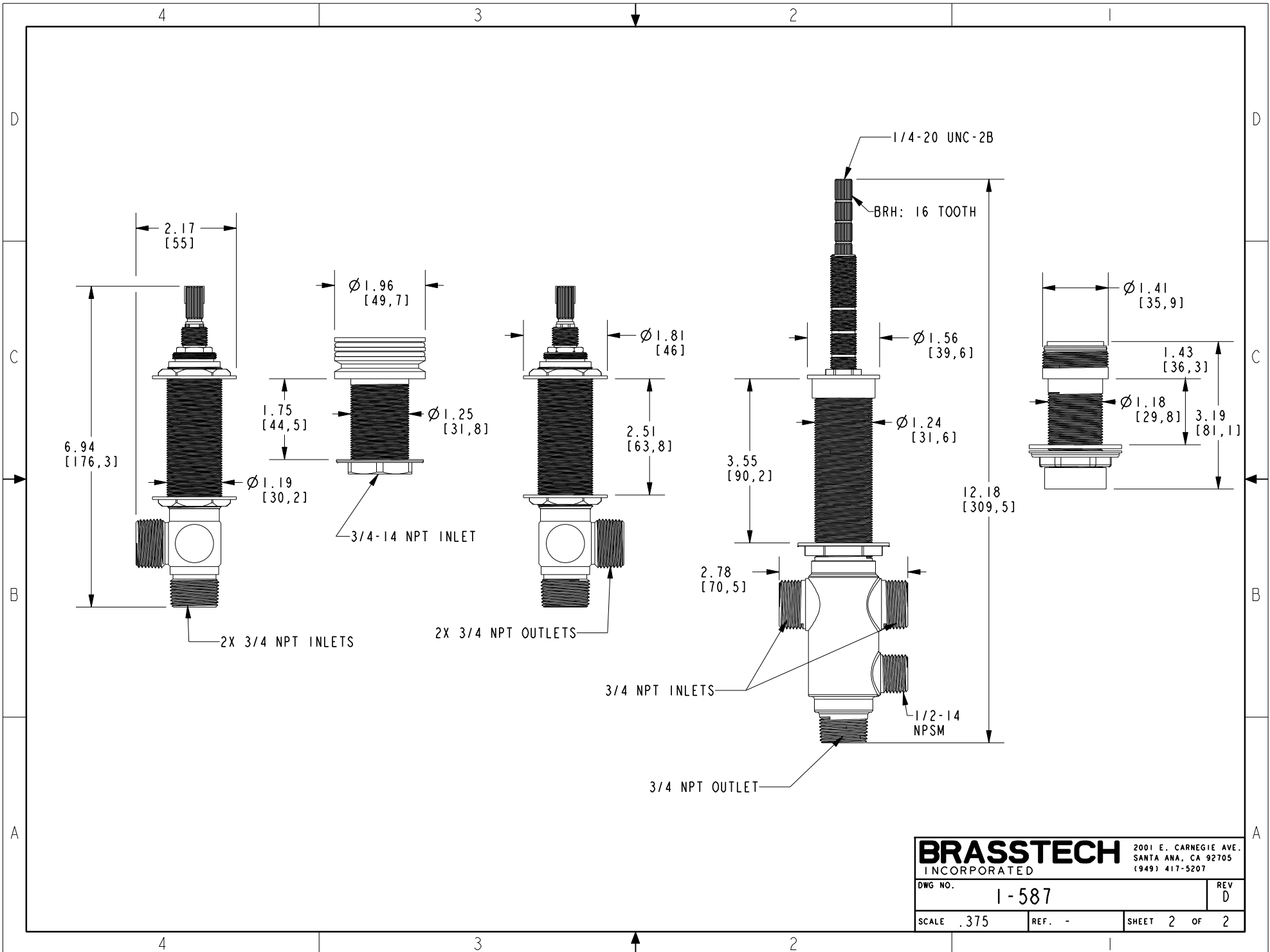
TESTING	ASSEMBLY	PLATING	POLISHING	MACHINING	TOOLING FIXTURE #	APPLICATION
-	-	-	-	-	-	REMOVE ALL BURRS AND SHARP EDGES
-	-	-	-	-	-	USED ON
-	-	-	-	-	-	NEXT ASSY

UNITS ARE: INCHES [MM]		
TOLERANCES ARE:		
FRACTIONS	DECIMALS	ANGLES
±1/16"	.X ±.1 [2.5]	±1°
	.XX ±.06 [1.5]	
(X.XXX) DENOTES CRITICAL DIMS. ALL THREADS ARE CRITICAL		
DRAWN	JIMSON	11/23/17
CHECKED	J.A.	11/23/17
APPROVED	J.A.	11/23/17

BRASSTECH 2001 CARNEGIE AVE.
INCORPORATED SANTA ANA, CA 92705
(949) 417-5207

ROMAN TUB 3 VALVE ROUGH

DWG NO.	REV
1-587	D
SCALE .250	REF. -
SHEET 1	OF 2



BRASSTECH		2001 E. CARNEGIE AVE. SANTA ANA, CA 92705 (949) 417-5207	
DWG NO.	1-587	REV	D
SCALE	.375	REF.	-
SHEET 2		OF 2	