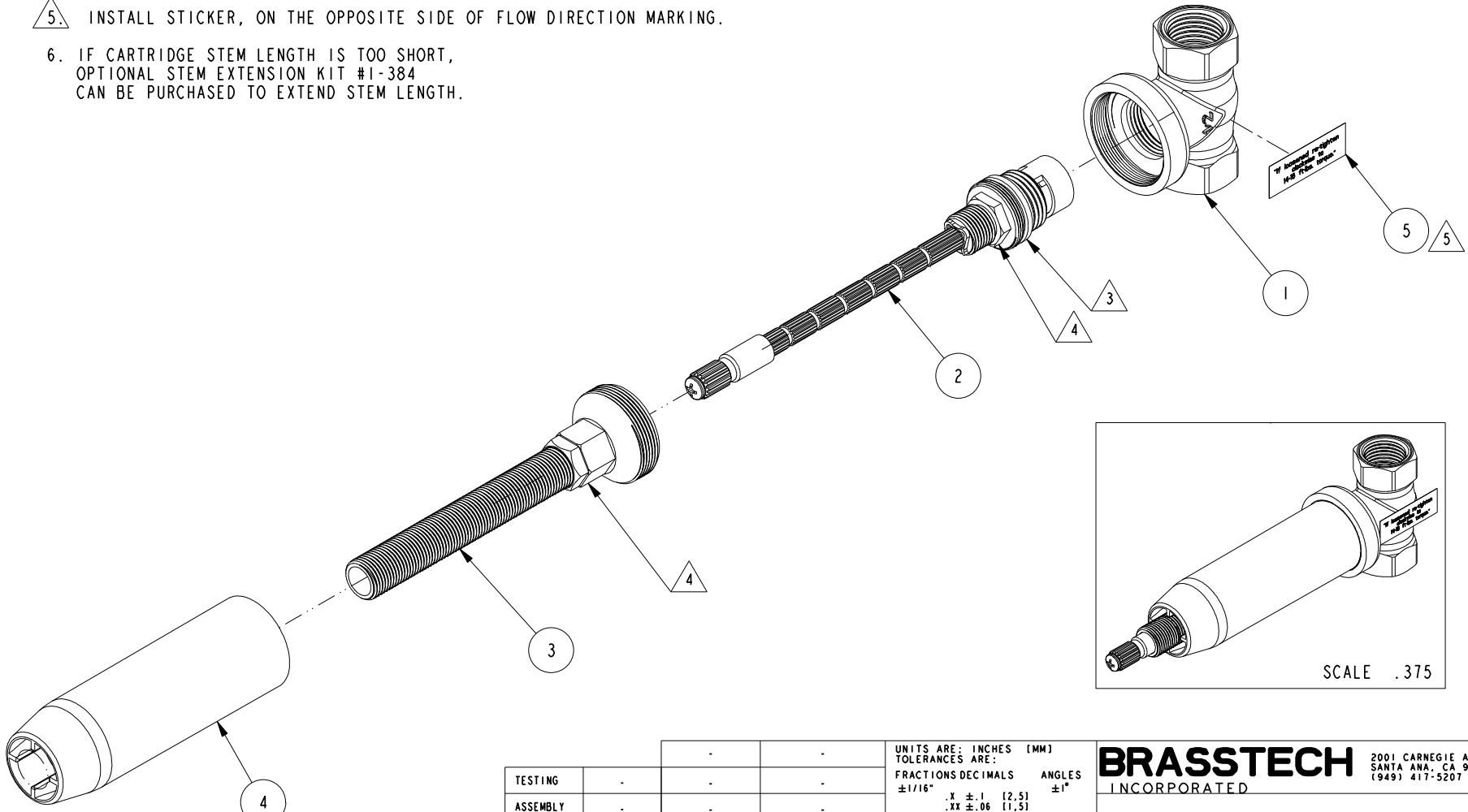


NOTES:

1. TO INSPECT ASSEMBLY, FOLLOW FIRST ARTICLE AND IN PROCESS INSPECTION SHEET.
2. INSPECT VISUALLY EDGES AND SEALING SURFACES FOR BURRS, NOTCHES AND OTHER POTENTIAL SEALING DEFECTS.
3. LIGHTLY WET O-RING AND SEAL WITH GREASE PRIOR TO SEALING.
4. TORQUE TO 15-20 FT-LBS.
5. INSTALL STICKER, ON THE OPPOSITE SIDE OF FLOW DIRECTION MARKING.
6. IF CARTRIDGE STEM LENGTH IS TOO SHORT, OPTIONAL STEM EXTENSION KIT #1-384 CAN BE PURCHASED TO EXTEND STEM LENGTH.

BILL OF MATERIAL (CURRENT LEVEL)

ITEM	PT/ASSY	DESCRIPTION	TYPE	QTY.
1	13306	BODY	PART	1
2	1-453	T/S CARTRIDGE-HOT	ASSEMBLY	1
3	1-455	NIPPLE ASM	ASSEMBLY	1
4	91787	MUD COVER, VALVE 3/4"	PART	1
5	98029	STICKER, 14-16 FT-LBS TORQUE	PART	1



ZONE	REV	DESCRIPTION	DATE	APPROVED
-	A	EN-4300kk	03/30/21	R. S.
-	-	EN-3961A	01/15/20	C. G.

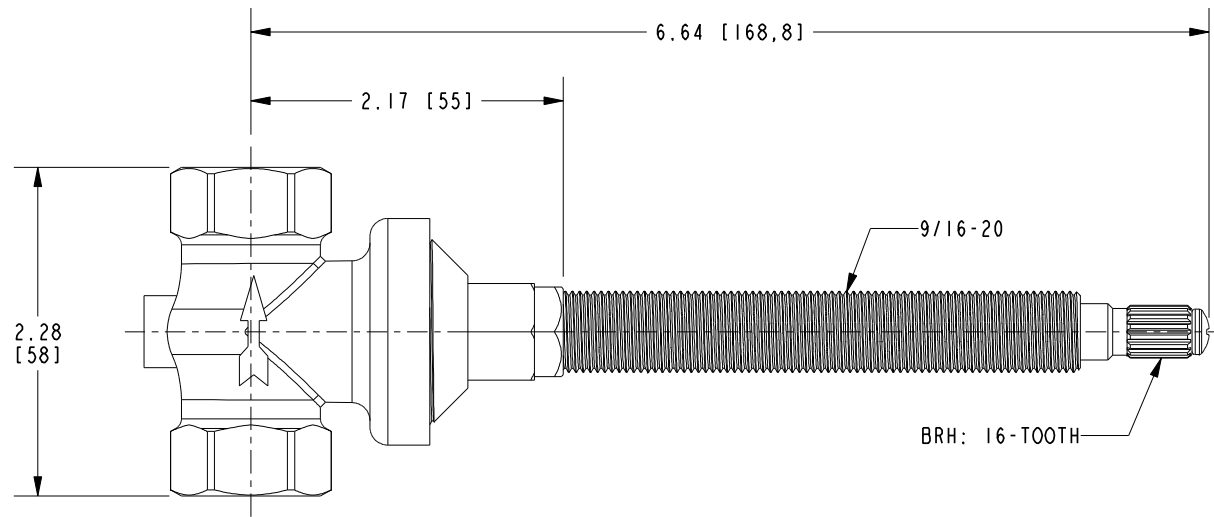
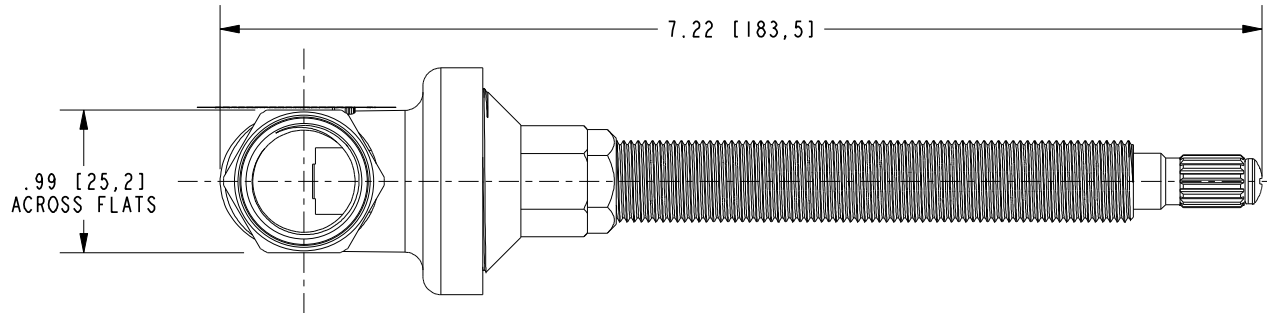
COPYRIGHT 2005 BRASSTECH, INC. THESE DRAWINGS AND THE DESIGNS DEPICTED HEREIN ARE THE PROPRIETARY PROPERTY OF BRASSTECH. ANY USE OR REPRODUCTION IS SUBJECT TO THE EXPRESS APPROVAL OF BRASSTECH. UNAUTHORIZED USE IS STRICTLY PROHIBITED. ALL RIGHTS RESERVED.

TESTING	ASSEMBLY	PLATING	POLISHING	MACHINING	TOOLING FIXTURE #	APPLICATION
-	-	-	-	-	-	REMOVE ALL BURRS AND SHARP EDGES

UNITS ARE: INCHES [MM]
 TOLERANCES ARE:
 FRACTIONS DECIMALS ANGLES
 ±1/16" .X ±.1 [2.5] ±1°
 .XX ±.06 [1.5]
 (X.XXX) DENOTES CRITICAL DIMS.
 ALL THREADS ARE CRITICAL
 DRAWN JINSON 01/15/20
 CHECKED C.G. 01/15/20
 APPROVED C.G. 01/15/20

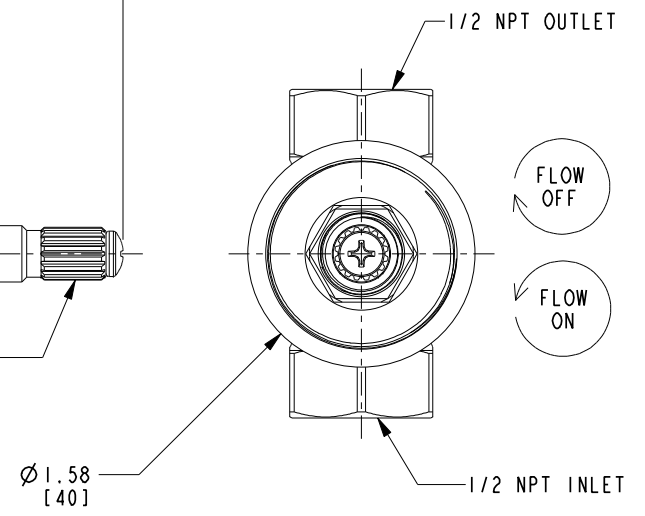
BRASSTECH 2001 CARNEGIE AVE.
 INCORPORATED SANTA ANA, CA 92705
 (949) 417-5207

STOP VALVE ASM 1/2" HOT
 DWG NO. 1-606U REV A
 SCALE .500 REF. - SHEET 1 OF 2



9/16-20

BRH: 16-TOOTH



BRASSTECH		2001 E. CARNEGIE AVE. SANTA ANA, CA 92705 (949) 417-5207	
DWG NO.	1-606U	REV	A
SCALE	.750	REF.	-
		SHEET	2 OF 2