

4

3

2

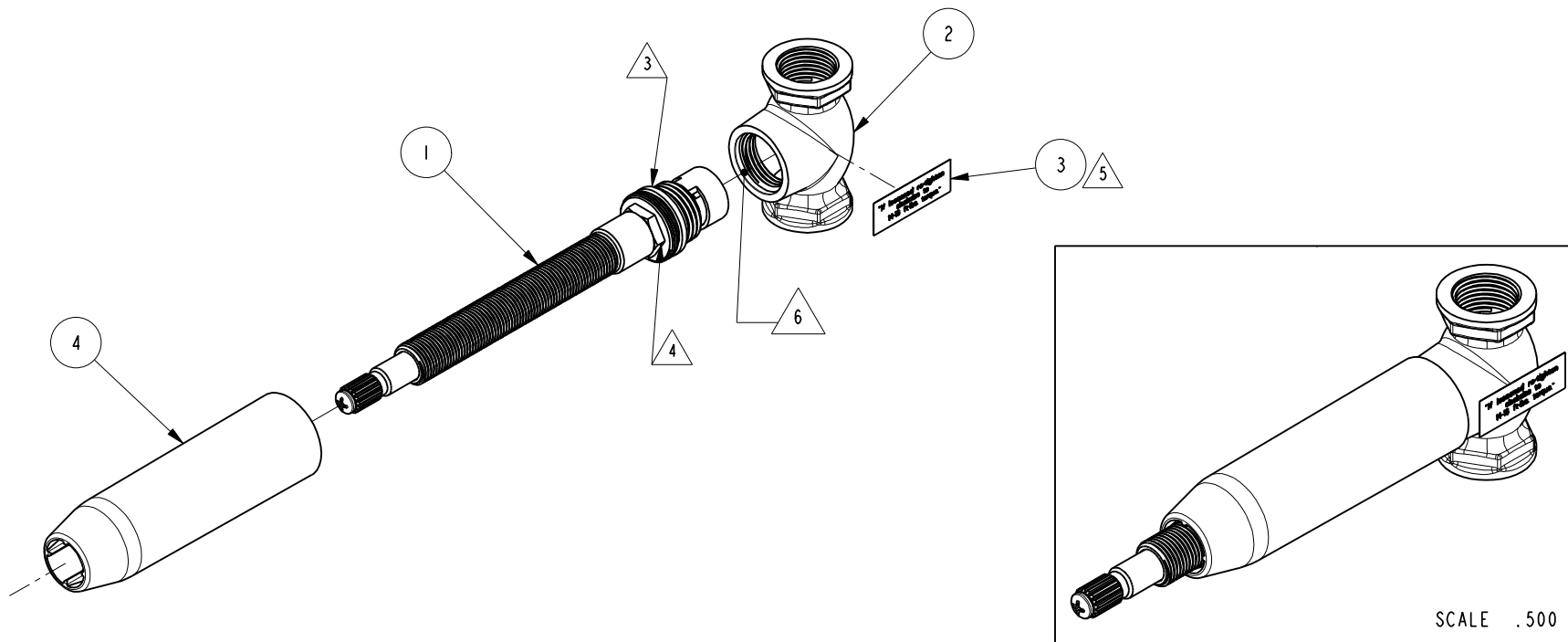
1

NOTES:

- (N1) 1. FIT / FORM / FUNCTION SHALL FOLLOW PS-E.008.
- (N2) 2. INSPECT VISUALLY EDGES AND SEALING SURFACES FOR BURRS, NOTCHES AND OTHER POTENTIAL SEALING DEFECTS.
- 3. LIGHTLY WET O-RING AND SEAL WITH GREASE PRIOR TO SEALING.
- 4. TORQUE TO 14-16 FT-LBS.
- 5. INSTALL STICKER, ITEM 3, ON THE OPPOSITE SIDE OF FLOW DIRECTION MARKING.
- 6. APPLY A THIN LAYER OF DOW CORNING OIL 200.
- 7. IF CARTRIDGE STEM LENGTH IS TOO SHORT, OPTIONAL STEM EXTENSION KIT #1-384 CAN BE PURCHASED TO EXTEND STEM LENGTH.

BILL OF MATERIAL (CURRENT LEVEL)

ITEM	PT/ASSY	DESCRIPTION	TYPE	QTY.
1	1-511	T/S CARTRIDGE-HOT	ASSEMBLY	1
2	10566	BODY, 1/2" STOP VALVE	PART	1
3	98029	STICKER, 14-16 FT-LBS TORQUE	PART	1
4	91643	MUD COVER, VALVE 1/2"	PART	1



D

D

C

C

B

B

A

A

ZONE	REV	DESCRIPTION	DATE	APPROVED
-	D	EN-3362	03/13/18	C.G.
-	C	EN-3286	03/10/17	V.V.
-	B	EN-3095a	01/24/17	V.V.
-	A	EN-2928	11/23/15	V.V.
-	-	RELEASED	3/97	-

COPYRIGHT 2005 BRASSTECH, INC. THESE DRAWINGS AND THE DESIGNS DEPICTED HEREIN ARE THE PROPRIETARY PROPERTY OF BRASSTECH. ANY USE OR REPRODUCTION IS SUBJECT TO THE EXPRESS APPROVAL OF BRASSTECH. UNAUTHORIZED USE IS STRICTLY PROHIBITED. ALL RIGHTS RESERVED.

TESTING	ASSEMBLY	PLATING	POLISHING	MACHINING	TOOLING FIXTURE #
-	-	-	-	-	-
					APPLICATION
					REMOVE ALL BURRS AND SHARP EDGES

UNITS ARE: INCHES [MM]	TOLERANCES ARE:
FRACTIONS DECIMALS	ANGLES
±1/16"	.X ±.1 [2.5] ±1°
	.XX ±.06 [1.5]
(X.XXX) DENOTES CRITICAL DIMS. ALL THREADS ARE CRITICAL	
DRAWN	JINSON 03/13/18
CHECKED	C.G. 03/13/18
APPROVED	C.G. 03/13/18

**BRASSTECH** 2001 CARNEGIE AVE. SANTA ANA, CA 92705 (949) 417-5207  
INCORPORATED

STOP VALVE ASM 1/2" HOT

DWG NO. 1-606H REV D

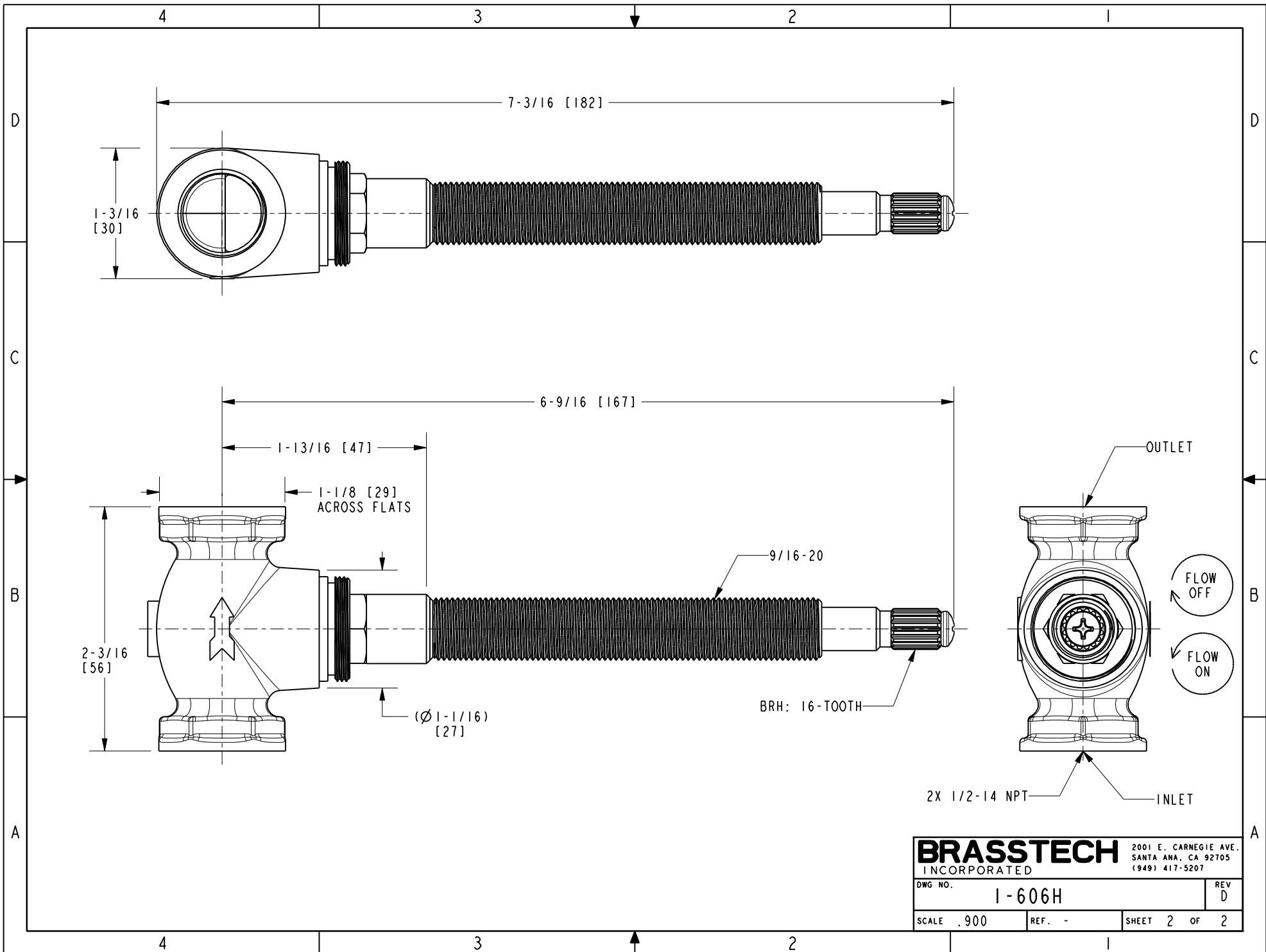
SCALE .450 REF. - SHEET 1 OF 2

4

3

2

1



<b>BRASSTECH</b>		2001 E. CARNEGIE AVE.	
INCORPORATED		SANTA ANA, CA 92705	
		(949) 417-5207	
DWG NO.	1-606H	REV	D
SCALE .900	REF. -	SHEET 2	OF 2