

4

3

2

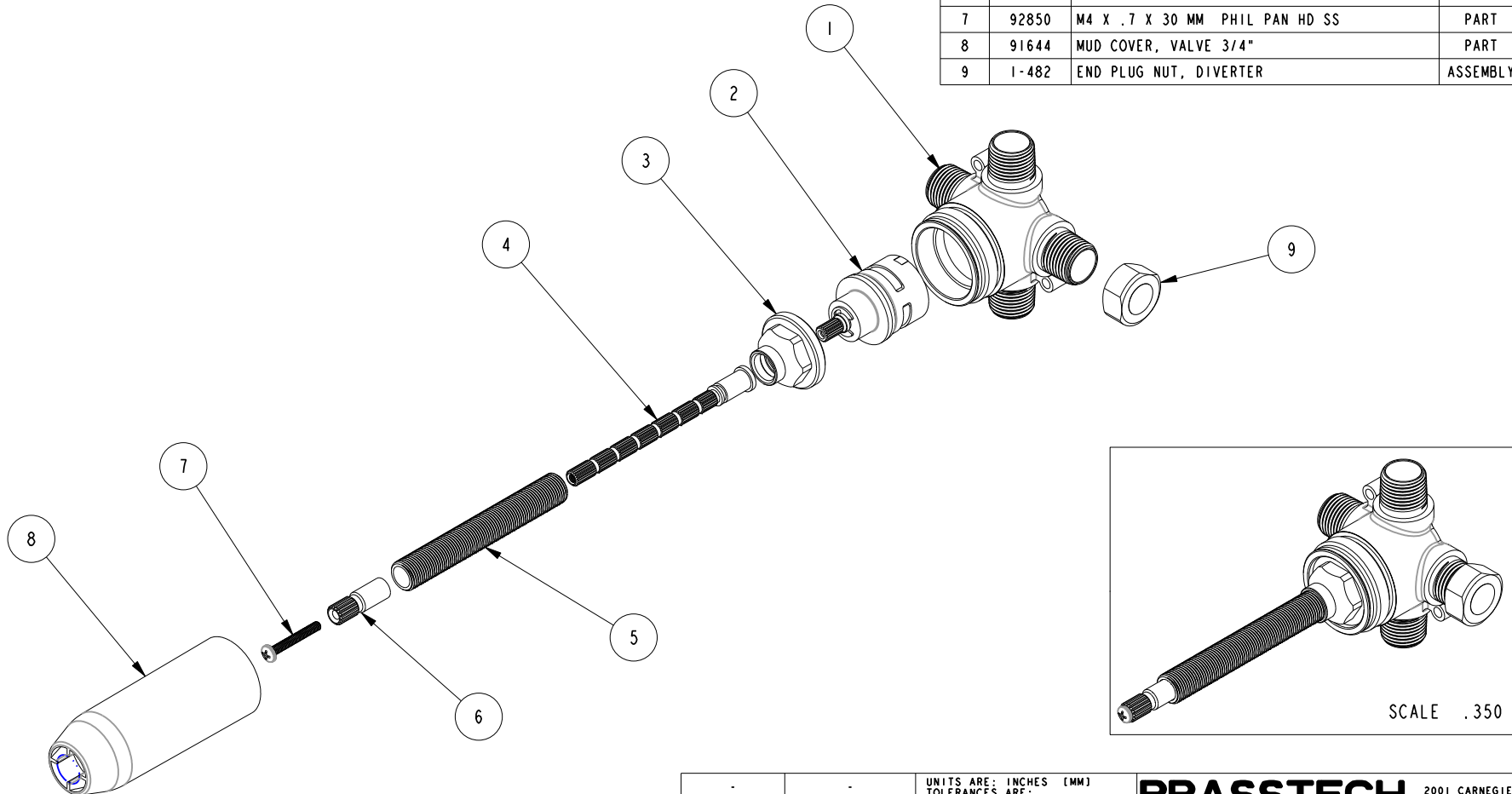
1

NOTES:

- (N1) 1. TO INSPECT ASSEMBLY, FOLLOW FIRST ARTICLE AND IN PROCESS INSPECTION SHEET.
- 2. IF CARTRIDGE STEM LENGTH IS TOO SHORT, OPTIONAL STEM EXTENSION KIT #1-384 CAN BE PURCHASED TO EXTEND STEM LENGTH.

BILL OF MATERIAL (CURRENT LEVEL)

ITEM	PT/ASSY	DESCRIPTION	TYPE	QTY.
1	12749	BODY, DIVERTER	PART	1
2	1-480	CARTRIDGE, 2 FUNCTION, 1 PAUSE, NO SHUT-OFF	PART	1
3	12748	BONNET, DIVERTER	PART	1
4	11345	STEM, 20T EXT. FULL BROACH	PART	1
5	10631	NIPPLE 9/16-20	PART	1
6	12790	1.20" ADAPTER- 20-T X 16-T	PART	1
7	92850	M4 X .7 X 30 MM PHIL PAN HD SS	PART	1
8	91644	MUD COVER, VALVE 3/4"	PART	1
9	1-482	END PLUG NUT, DIVERTER	ASSEMBLY	1



TESTING	-	-	-
ASSEMBLY	-	-	-
PLATING	-		
POLISHING	-		
MACHINING	-	NEXT ASSY	USED ON
TOOLING FIXTURE #		REMOVE ALL BURRS AND SHARP EDGES	

**BRASSTECH** 2001 CARNEGIE AVE.  
INCORPORATED SANTA ANA, CA 92705  
(949) 417-5207

IN-WALL DIVERTER, 2-FUNCTION,  
1 PAUSE, NO SHUT-OFF

DWG NO. 1-706

SCALE .350 REF. - SHEET 1 OF 2

COPYRIGHT 2005 BRASSTECH, INC. THESE DRAWINGS AND THE DESIGNS DEPICTED HEREIN ARE THE PROPRIETARY PROPERTY OF BRASSTECH. ANY USE OR REPRODUCTION IS SUBJECT TO THE EXPRESS APPROVAL OF BRASSTECH. UNAUTHORIZED USE IS STRICTLY PROHIBITED. ALL RIGHTS RESERVED.

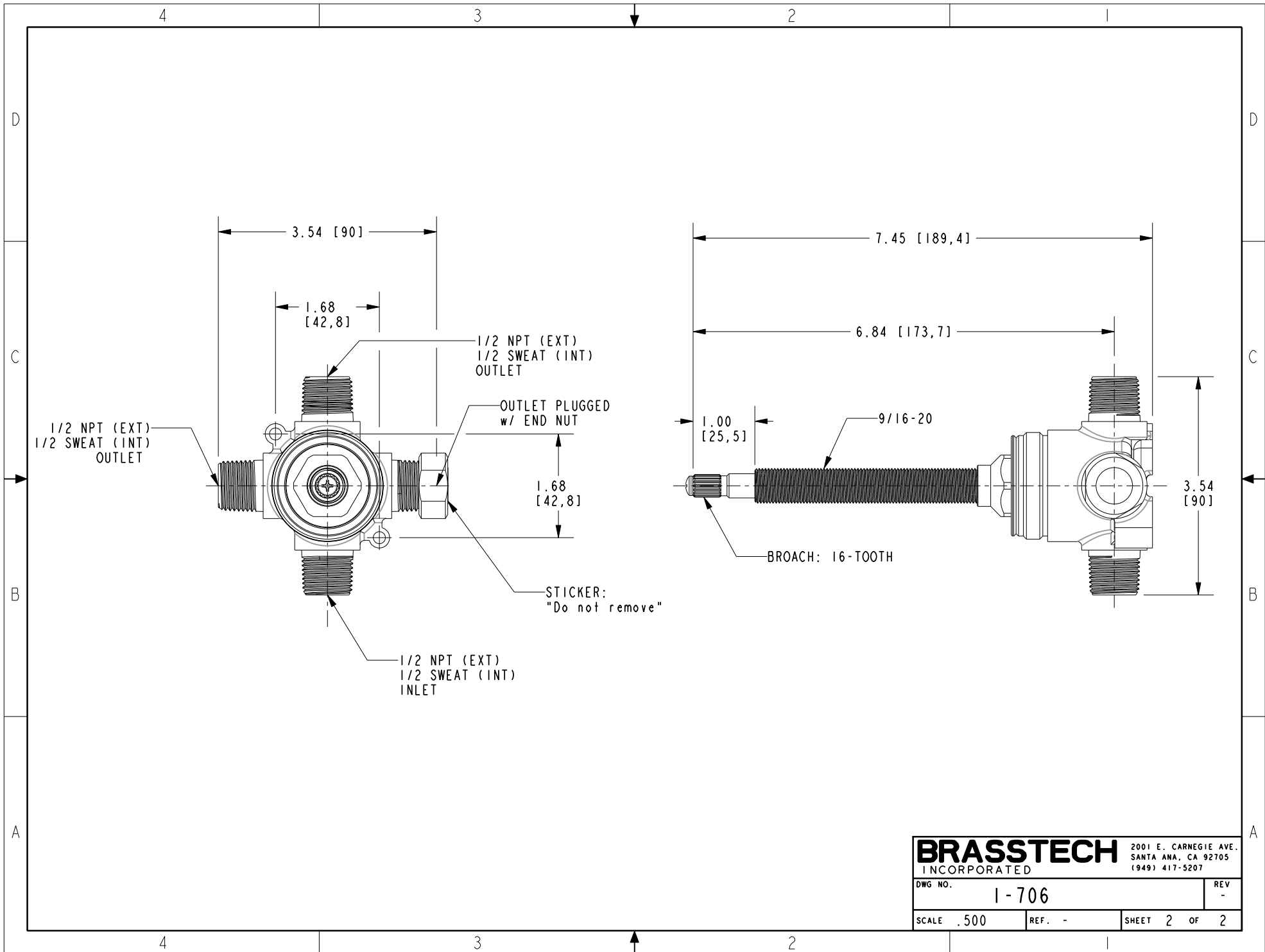
EN-4363	09/10/21	N.S.
ZONE	REV	DESCRIPTION

4

3

2

1



<b>BRASSTECH</b>		2001 E. CARNEGIE AVE. SANTA ANA, CA 92705 (949) 417-5207	
DWG NO.	1-706	REV	-
SCALE .500	REF. -	SHEET 2	OF 2