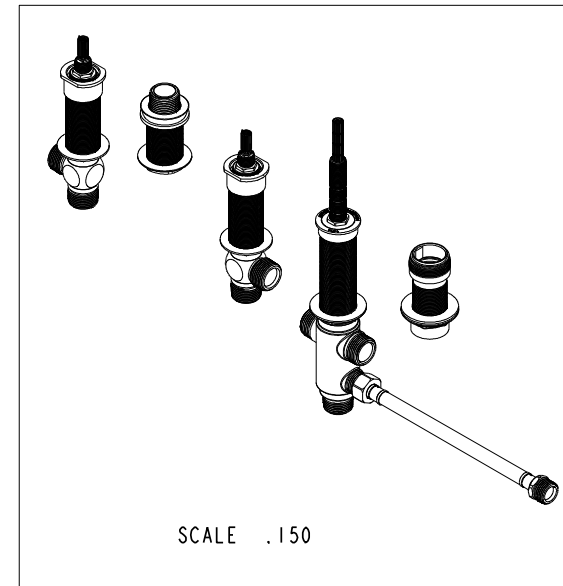
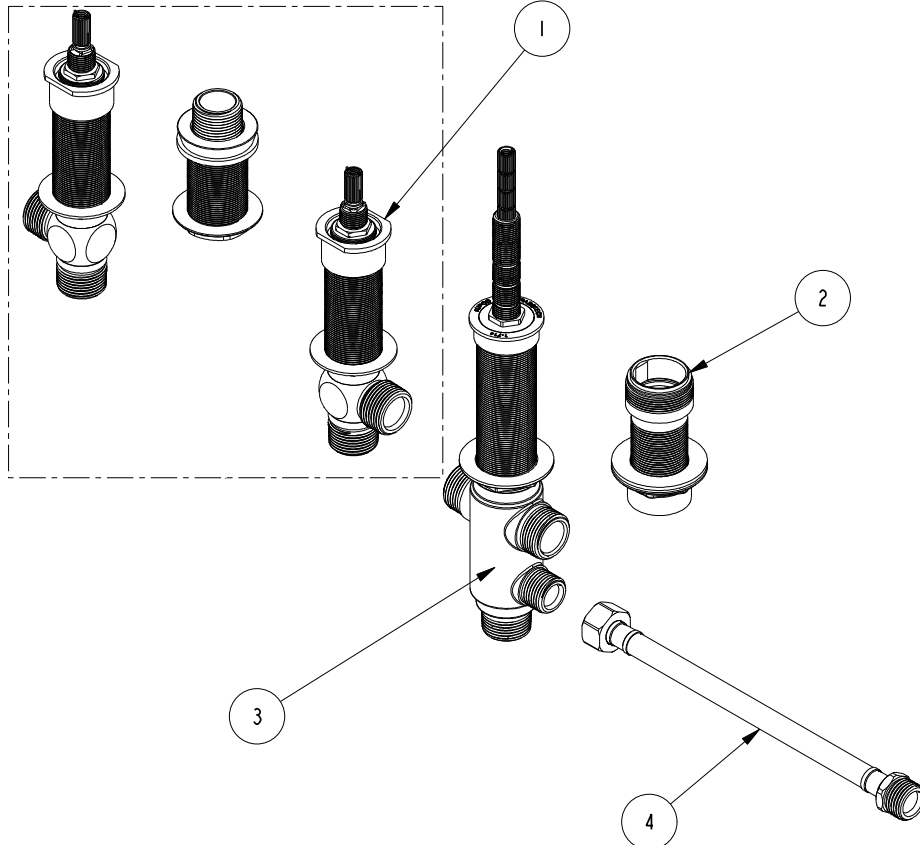


NOTES:

1. TO INSPECT ASSEMBLY, FOLLOW FIRST ARTICLE AND IN PROCESS INSPECTION SHEET.

BILL OF MATERIAL (CURRENT LEVEL)

ITEM	PT/ASSY	DESCRIPTION	TYPE	QTY.
1	1-725	ROMAN TUB VALVE ROUGH	ASSEMBLY	1
2	5-011	MOUNTING HDW FOR DECK FLANGE	ASSEMBLY	1
3	1-714	R/T VALVE DIVERTER	ASSEMBLY	1
4	12302	HOSE, 36 INCHES	ASSEMBLY	1

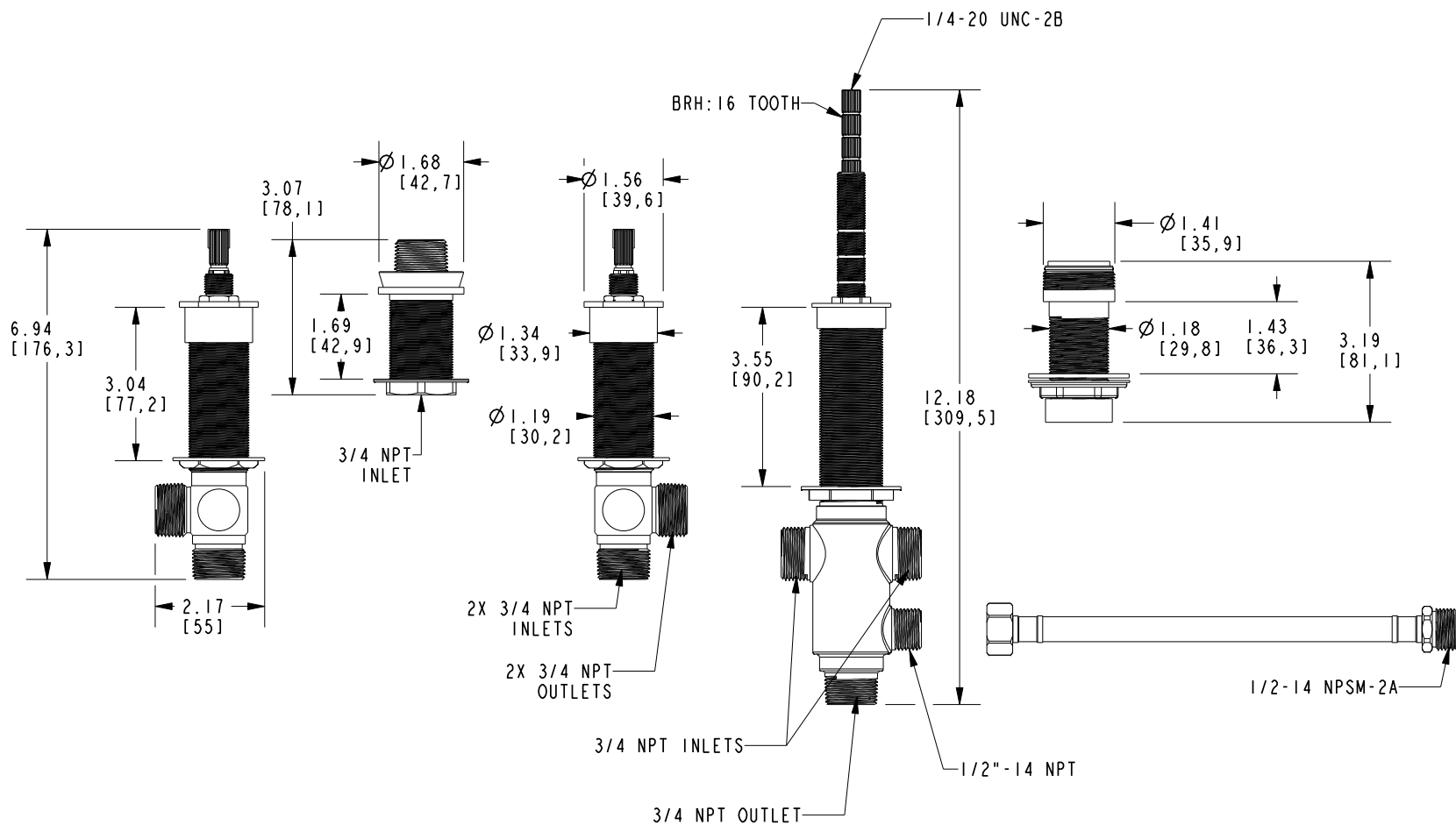


		-	
TESTING	-	-	3-2527
ASSEMBLY	-	-	3-2537
PLATING	-	-	-
POLISHING	-	NEXT ASSY	USED ON
MACHINING	-	APPLICATION	
TOOLING FIXTURE #		REMOVE ALL BURRS AND SHARP EDGES	

UNITS ARE: INCHES (MM)	
TOLERANCES ARE:	
FRACTIONS	DECIMALS
±1/16"	±.005
.X ±.1 (2.5)	.XX ±.06 (1.5)
ANGLES ±1°	
(X.XXX) DENOTES CRITICAL DIMS.	
ALL THREADS ARE CRITICAL	
DRAWN	J. AMOZOC 8/30/17
CHECKED	V. VU 8/30/17
APPROVED	V. VU 8/30/17

BRASSTECH		2001 CARNEGIE AVE. SANTA ANA, CA 92705 (949) 417-5207	
INCORPORATED			
ROMAN TUB VALVE ROUGH			
DWG NO.		REV	
1-726		B	
SCALE	.375	REF. -	SHEET 1 OF 2

-	B	EN-4300kk	04/01/21	R.S.	COPYRIGHT 2005 BRASSTECH, INC. THESE DRAWINGS AND THE DESIGNS DEPICTED HEREIN ARE THE PROPRIETARY PROPERTY OF BRASSTECH. ANY USE OR REPRODUCTION IS SUBJECT TO THE EXPRESS APPROVAL OF BRASSTECH. UNAUTHORIZED USE IS STRICTLY PROHIBITED. ALL RIGHTS RESERVED.
-	A	EN-4162	05/04/20	J.M.	
-	-	EN-3435	10/27/17	J.A.	
ZONE	REV	DESCRIPTION	DATE	APPROVED	



BRASSTECH		2001 E. CARNEGIE AVE. SANTA ANA, CA 92705 (949) 417-5207	
DWG NO.	1-726	REV	B
SCALE	.300	REF.	-
SHEET	2	OF	2