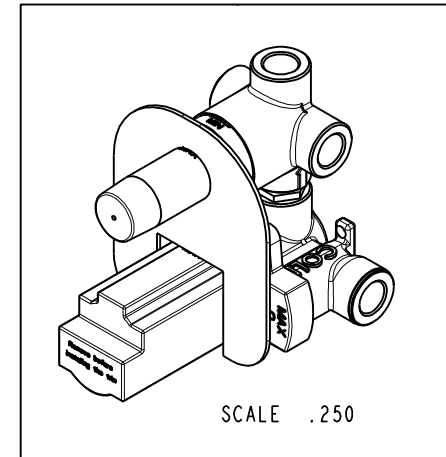
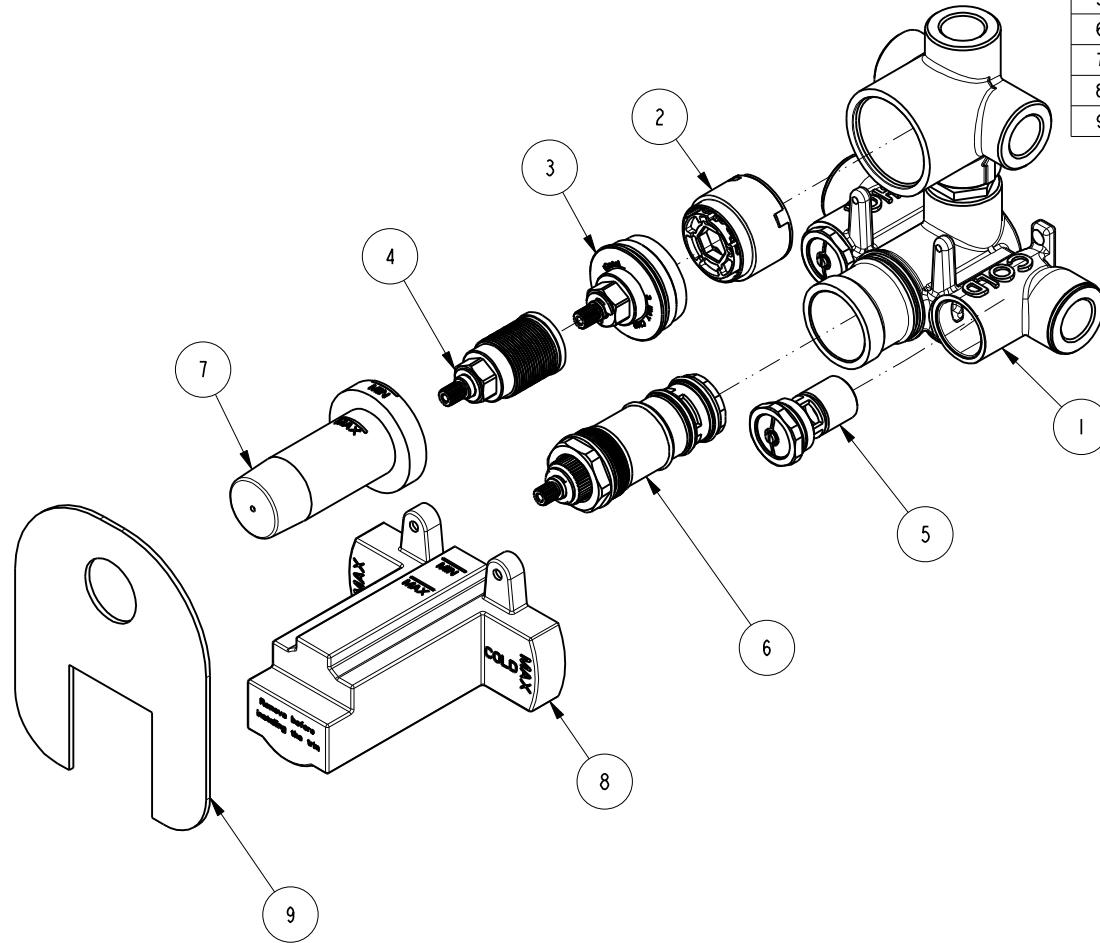


NOTES:

1. FIT / FORM / FUNCTION SHALL FOLLOW PS-E.008.

**BILL OF MATERIAL (CURRENT LEVEL)**

ITEM	PT/ASSY	DESCRIPTION	TYPE	QTY.
1	1-363	3 WAY CALGREEN 1/2" THERMO VALVE BODY	ASSEMBLY	1
2	1-364	3 WAY CALGREEN 1/2" THERMO DIVERTER CARTRIDGE	ASSEMBLY	1
3	1-354	3-WAY DIVERTER VALVE NUT ASM	ASSEMBLY	1
4	1-343	DIVERTER STEM ADAPTER	ASSEMBLY	1
5	1-103	STOP VALVE ASSEMBLY	ASSEMBLY	2
6	1-338	THERMO CARTRIDGE	ASSEMBLY	1
7	91686	DIVERTER MUD COVER	PART	1
8	91687	THERMO BODY MUD COVER	PART	1
9	91695	FINISHED WALL OPENING TEMPLATE	PART	1



UNITS ARE: INCHES [MM]  
 TOLERANCES ARE:  
 FRACTIONS DECIMALS ANGLES  
 ±1/16" .X ±.1 [2.5] ±1"  
 .XX ±.06 [1.5]  
 (X.XXX) DENOTES CRITICAL DIMS.  
 ALL THREADS ARE CRITICAL

**BRASSTECH** 2001 CARNEGIE AVE.  
 INCORPORATED SANTA ANA, CA 92705  
 (949) 417-5207

1/2" THERMO VALVE WITH 3 WAY  
 CALGREEN DIVERTER

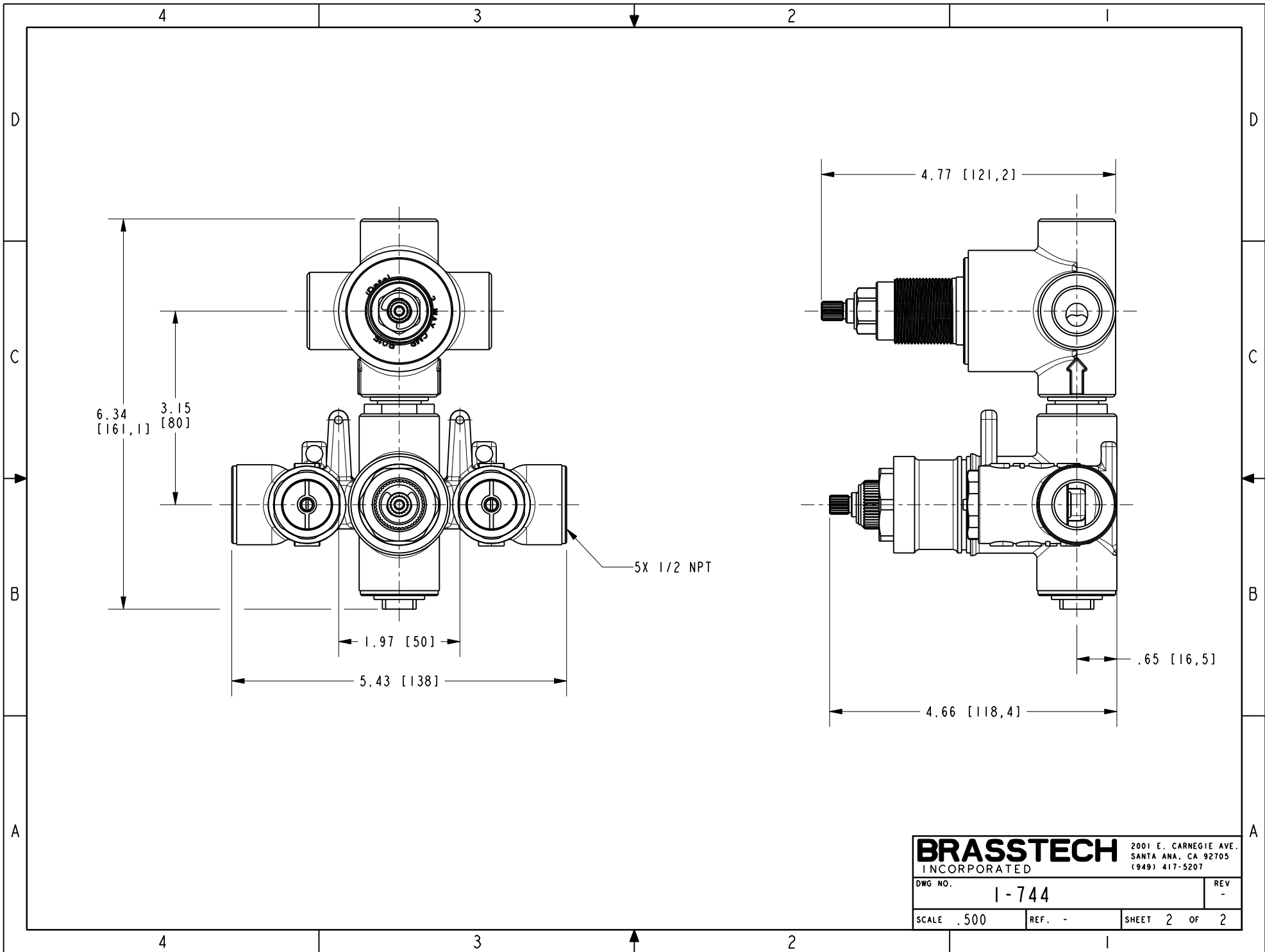
DWG NO. 1-744 REV -

SCALE .312 REF. - SHEET 1 OF 2

COPYRIGHT 2005 BRASSTECH, INC.  
 THESE DRAWINGS AND THE DESIGNS  
 DEPICTED HEREIN ARE THE PROPRIETARY  
 PROPERTY OF BRASSTECH. ANY USE  
 OR REPRODUCTION IS SUBJECT TO  
 THE EXPRESS APPROVAL OF BRASSTECH.  
 UNAUTHORIZED USE IS STRICTLY  
 PROHIBITED. ALL RIGHTS RESERVED.

ZONE	REV	DESCRIPTION	DATE	APPROVED
-	-	EN-3155	10/05/16	J.M.

TESTING	ASSEMBLY	PLATING	POLISHING	MACHINING	TOOLING FIXTURE #	APPLICATION	APPROVED	DATE
-	-	-	-	-	-	REMOVE ALL BURRS AND SHARP EDGES	J.M.	10/05/16



<b>BRASSTECH</b>		2001 E. CARNEGIE AVE.	
INCORPORATED		SANTA ANA, CA 92705	
DWG NO. 1-744		REV -	
SCALE .500	REF. -	SHEET 2 OF 2	