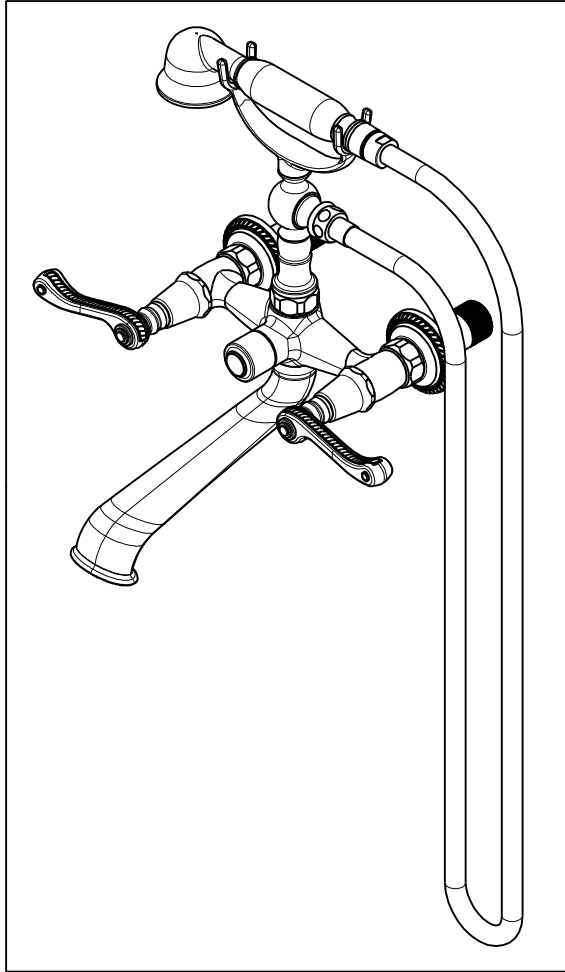


NOTES:

1. TO INSPECT ASSEMBLY, FOLLOW FIRST ARTICLE AND IN PROCESS INSPECTION SHEET.



BILL OF MATERIAL (CURRENT LEVEL)

| ITEM | PT/ASSY | DESCRIPTION | TYPE | QTY. |
|------|---------|--|----------|------|
| 1 | 12894 | BODY - FOR 933,934 | PART | 1 |
| 2 | 2-220 | RISER ASM | ASSEMBLY | 1 |
| 3 | 10442 | SEAT FOR CARTRIDGE | PART | 2 |
| 4 | 1-326 | W/S CARTRIDGE FRICTION - HOT | PART | 1 |
| 5 | 1-325 | W/S CARTRIDGE FRICTION - COLD | PART | 1 |
| 6 | 12062 | ADAPTER - 20-T X 16-T | PART | 2 |
| 7 | 91039 | WSHR, .625 ID X 1.00 OD X .125 THK, RUBBER | PART | 2 |
| 8 | 12458 | NIPPLE 3/4 X 2.8" | PART | 2 |
| 9 | 281 | HANDSHOWER ASM | ASSEMBLY | 1 |
| 10 | 284 | 59 IN. SPIRAL SHOWER HOSE | ASSEMBLY | 1 |
| 11 | 12585 | SPOUT | PART | 1 |
| 12 | 91022 | O-RING, #2- 018, EPDM, 65-75 DURO, NSF 61 | PART | 1 |
| 13 | 91020 | O-RING, #2-016, EPDM, 65-75 DURO, NSF 61 | PART | 2 |
| 14 | 10332 | HEX NUT | PART | 2 |
| 15 | 20-167 | FLANGE ASM | ASSEMBLY | 2 |
| 16 | 92539 | SCRW, M4X22 FLAT HD SOCKET HD CAP | PART | 2 |
| 17 | 12259 | HANDLE BONNET - TUB FILLER | PART | 2 |
| 18 | 2-182 | HANDLE ASM - RIGHT | ASSEMBLY | 1 |
| 19 | 2-181 | HANDLE ASM - LEFT | ASSEMBLY | 1 |
| 20 | 20-260 | DIVERTER ASM | ASSEMBLY | 1 |
| 21 | 20-259 | DIVERTER ASM | ASSEMBLY | 1 |
| 22 | 13313 | DIVERTER BUTTON | PART | 1 |

| ZONE | REV | DESCRIPTION | DATE | APPROVED |
|------|-----|-------------|----------|----------|
| - | C | EN-4300h | 01/05/21 | R.S. |
| - | B | EN-3565A | 01/22/20 | C.G. |
| - | A | EN-3150a | 05/18/17 | J.M. |
| - | - | EN-3058b | 09/13/16 | AN |

COPYRIGHT 2005 BRASSTECH, INC. THESE DRAWINGS AND THE DESIGNS DEPICTED HEREIN ARE THE PROPRIETARY PROPERTY OF BRASSTECH. ANY USE OR REPRODUCTION IS SUBJECT TO THE EXPRESS APPROVAL OF BRASSTECH. UNAUTHORIZED USE IS STRICTLY PROHIBITED. ALL RIGHTS RESERVED.

| TESTING | - | - | - |
|-------------------|----------------------------------|-------------|---------|
| ASSEMBLY | - | - | - |
| PLATING | - | - | - |
| POLISHING | - | NEXT ASSY | USED ON |
| MACHINING | - | APPLICATION | |
| TOOLING FIXTURE # | REMOVE ALL BURRS AND SHARP EDGES | | |

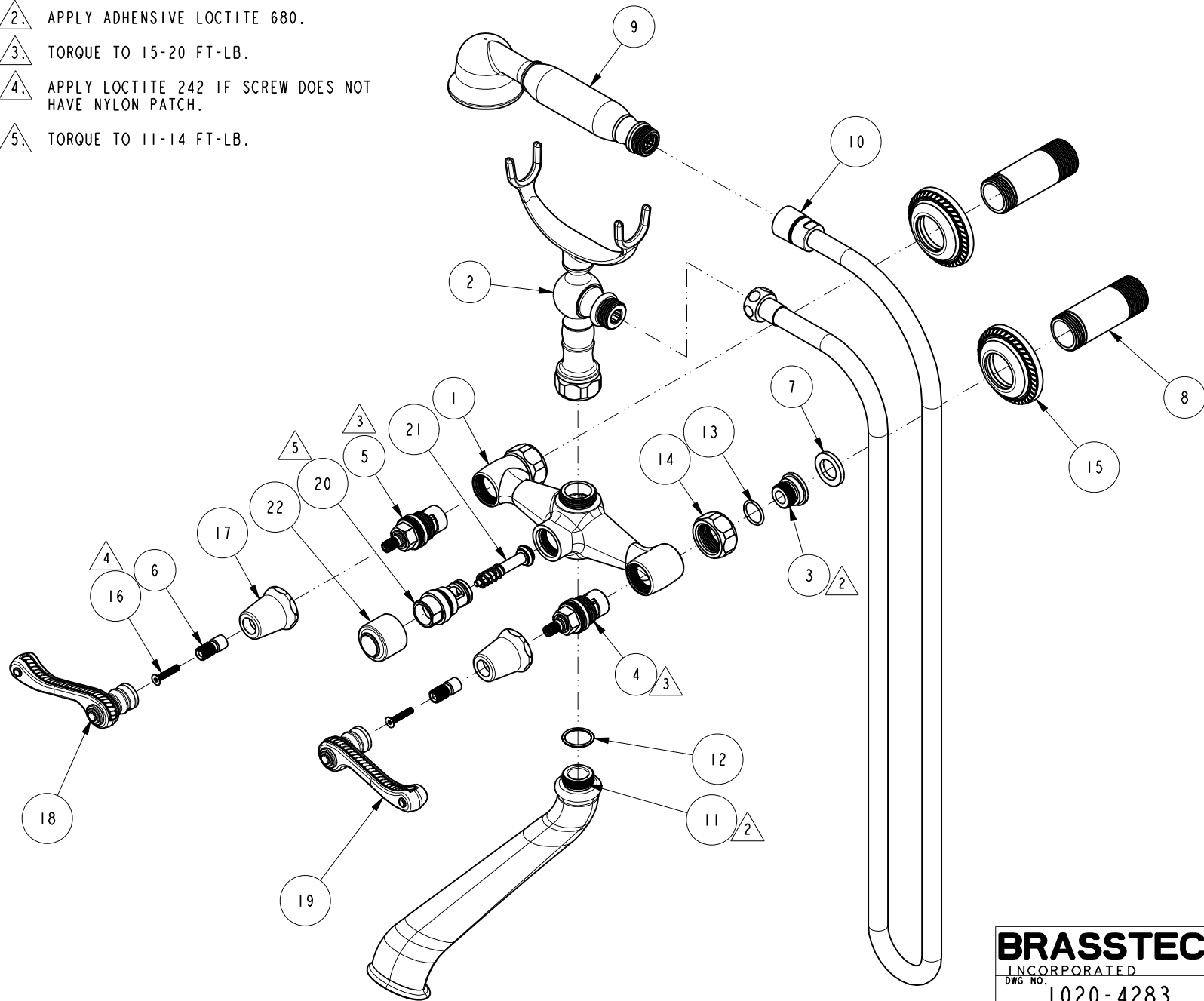
| | |
|--------------------------------|-----------------|
| UNITS ARE: INCHES [MM] | |
| TOLERANCES ARE: | |
| FRACTIONS DECIMALS | ANGLES |
| ±1/16" | ±° |
| .X ±.1 [2,5] | |
| .XX ±.06 [1,5] | |
| (X.XXX) DENOTES CRITICAL DIMS. | |
| ALL THREADS ARE CRITICAL | |
| DRAWN | JINSON 01/05/21 |
| CHECKED | R.S. 01/05/21 |
| APPROVED | R.S. 01/05/21 |

BRASSTECH 2001 CARNEGIE AVE.
INCORPORATED SANTA ANA, CA 92705
(949) 417-5207

EXPOSED TUB FILLER, WALL MOUNT

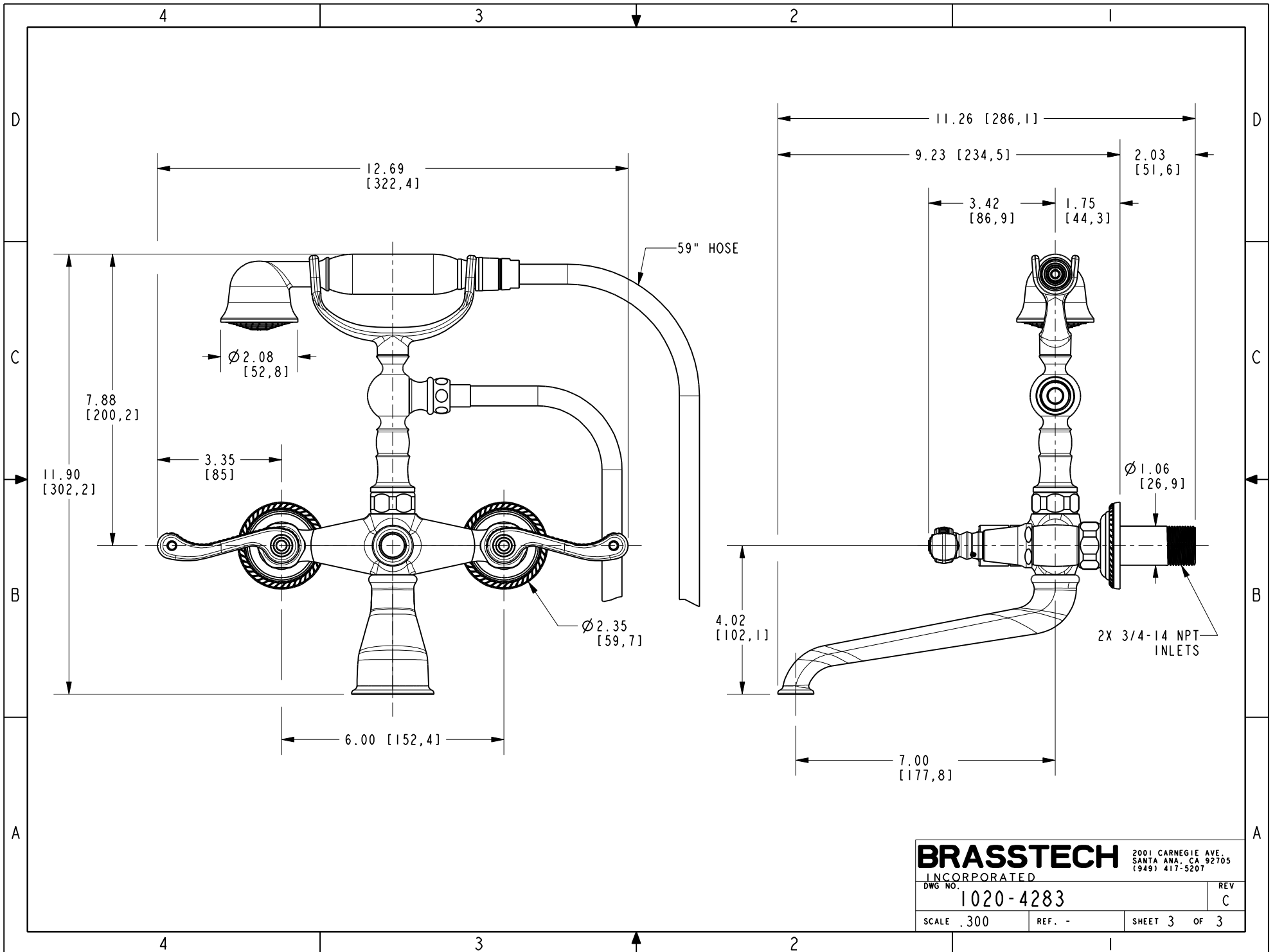
| | | | |
|---------|-----------|------|---|
| DWG NO. | 1020-4283 | REV | C |
| SCALE | .200 | REF. | - |
| SHEET | 1 | OF | 3 |

- △2. APPLY ADHENSIVE LOCTITE 680.
- △3. TORQUE TO 15-20 FT-LB.
- △4. APPLY LOCTITE 242 IF SCREW DOES NOT HAVE NYLON PATCH.
- △5. TORQUE TO 11-14 FT-LB.



BRASSTECH 2001 CARNEGIE AVE.
 INCORPORATED SANTA ANA, CA 92705
 (949) 417-5207

| | | | |
|---------|-----------|------|---|
| DWG NO. | 1020-4283 | REV | C |
| SCALE | .250 | REF. | - |
| SHEET 2 | | OF 3 | |



BRASSTECH

INCORPORATED

2001 CARNEGIE AVE.
SANTA ANA, CA 92705
(949) 417-5207

| | |
|----------------------|----------|
| DWG NO. 1020-4283 | REV C |
| SCALE .300 | REF. - |
| SHEET 3 OF 3 | |