

NOTES:

1. TO INSPECT ASSEMBLY, FOLLOW FIRST ARTICLE AND IN PROCESS INSPECTION SHEET.

2 SLIT AND SHORTEN O-RING BY .13" TO .20" IN LENGTH BEFORE INSTALLING.

3 SLIT O-RING BEFORE INSTALLING.

4 INSTALLATION TORQUE: 8 - 14 LB-FT.

5 WATER TEST WHOLE UNIT.

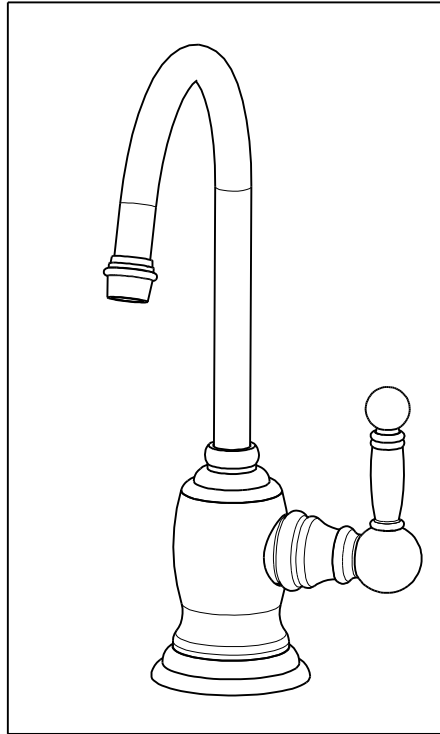
6 INSTALLATION TORQUE: 10 -14 LB-IN.

7 BAG 5-007 IN A SEPARATE BAG.

8 APPLY THIN FILM OF DOW CORNING 111.

9 APPLY LOCTITE 242.

10 APPLY LOCTITE 680.



BILL OF MATERIAL (CURRENT LEVEL)

| ITEM | PT/ASSY | DESCRIPTION | TYPE | QTY. |
|------|---------|--|----------|------|
| 1 | 1-134 | CARTR 3/8 HOT 1/4 TR | PART | 1 |
| 2 | 5-007 | 1/4 COMP KIT | ASSEMBLY | 1 |
| 3 | 10514 | MOUNTING CRESCENT | PART | 1 |
| 4 | 10516 | MOUNTING NUT | PART | 1 |
| 5 | 10661 | MOUNTING STUD | PART | 1 |
| 6 | 12716 | ESCUTCHEON | PART | 1 |
| 7 | 13491 | WATER DISP LEVER HUB (TRAD) | PART | 1 |
| 8 | 13608 | WATER DISP. BODY COLD (TRAD) | PART | 1 |
| 9 | 13661 | WATER DISP HDL BONNET (TRAD) | PART | 1 |
| 10 | 13791 | LEVER HANDLE | PART | 1 |
| 11 | 50705 | WATER DISP BODY CAP | PART | 1 |
| 12 | 50706 | WATER DISP SPOUT RET RING | PART | 1 |
| 13 | 50712 | WATER DISP SPOUT SHELL | PART | 1 |
| 14 | 50713 | SPOUT, WATER DISP. (TRAD.) | PART | 1 |
| 15 | 50760 | NIPPLE WATER DISP | PART | 1 |
| 16 | 91017 | O-RING #2-012 | PART | 2 |
| 17 | 91063 | MOUNTING CRESCENT GASKET | PART | 1 |
| 18 | 91217 | O-RING, #2-020, EPDM, 65-75 DURO, NSF 61 | PART | 1 |
| 19 | 91382 | O-RING, #2- 012, TEFLON, | PART | 1 |
| 20 | 91383 | O-RING, #2- 014, TEFLON, NSF 61 | PART | 1 |
| 21 | 91762 | O-RING, #2-132, EP, 50 DURO - GREY | PART | 1 |
| 22 | 92017 | SCRW, 1/4-20 X 3/16 SKT HD CUP PT SS | PART | 1 |
| 23 | 92477 | SCRW, M4 X 16 SKT FLT HD SS | PART | 1 |
| 24 | 92926 | ADAPTER | PART | 1 |

| - | M | EN-4187 | 10/25/22 | J.M. |
|------|-----|-------------|----------|----------|
| - | K | EN-4300jj | 04/12/21 | R.S. |
| - | J | EN-3722 | 02/08/19 | C.G. |
| - | H | EN-3257D | 10/05/17 | V.VU |
| - | F | EN-2601 | 09/16/13 | - |
| - | E | EN-2528 | 05/08/13 | - |
| - | D | EN-2186 | 06/20/12 | - |
| - | C | EO-0936 | 01/29/08 | - |
| - | B | EO-0478 | 02/16/05 | - |
| - | A | EO-0461 | 12/15/04 | - |
| - | - | EO-0441 | 11/18/04 | - |
| ZONE | REV | DESCRIPTION | DATE | APPROVED |

COPYRIGHT 2005 BRASSTECH, INC. THESE DRAWINGS AND THE DESIGNS DEPICTED HEREIN ARE THE PROPRIETARY PROPERTY OF BRASSTECH. ANY USE OR REPRODUCTION IS SUBJECT TO THE EXPRESS APPROVAL OF BRASSTECH. UNAUTHORIZED USE IS STRICTLY PROHIBITED. ALL RIGHTS RESERVED.

| TESTING | - | - | - |
|-------------------|---|----------------------------------|---------|
| ASSEMBLY | - | - | - |
| PLATING | - | - | - |
| POLISHING | - | NEXT ASSY | USED ON |
| MACHINING | - | APPLICATION | |
| TOOLING FIXTURE # | | REMOVE ALL BURRS AND SHARP EDGES | |

UNITS ARE: INCHES [MM]

TOLERANCES ARE:

FRACTIONS DECIMALS ANGLES
 $\pm 1/16"$.X $\pm .1$ [2.5] $\pm 1^\circ$
 .XX $\pm .06$ [1.5]

(X.XXX) DENOTES CRITICAL DIMS.
 ALL THREADS ARE CRITICAL

| | | |
|----------|--------|----------|
| DRAWN | JINSON | 10/25/22 |
| CHECKED | G.B. | 10/25/22 |
| APPROVED | J.M. | 10/25/22 |

BRASSTECH
 INCORPORATED

2001 CARNEGIE AVE.
 SANTA ANA, CA 92705
 (949) 417-5207

COLD WATER DISP, LEVER
 TRAD

DWG NO.

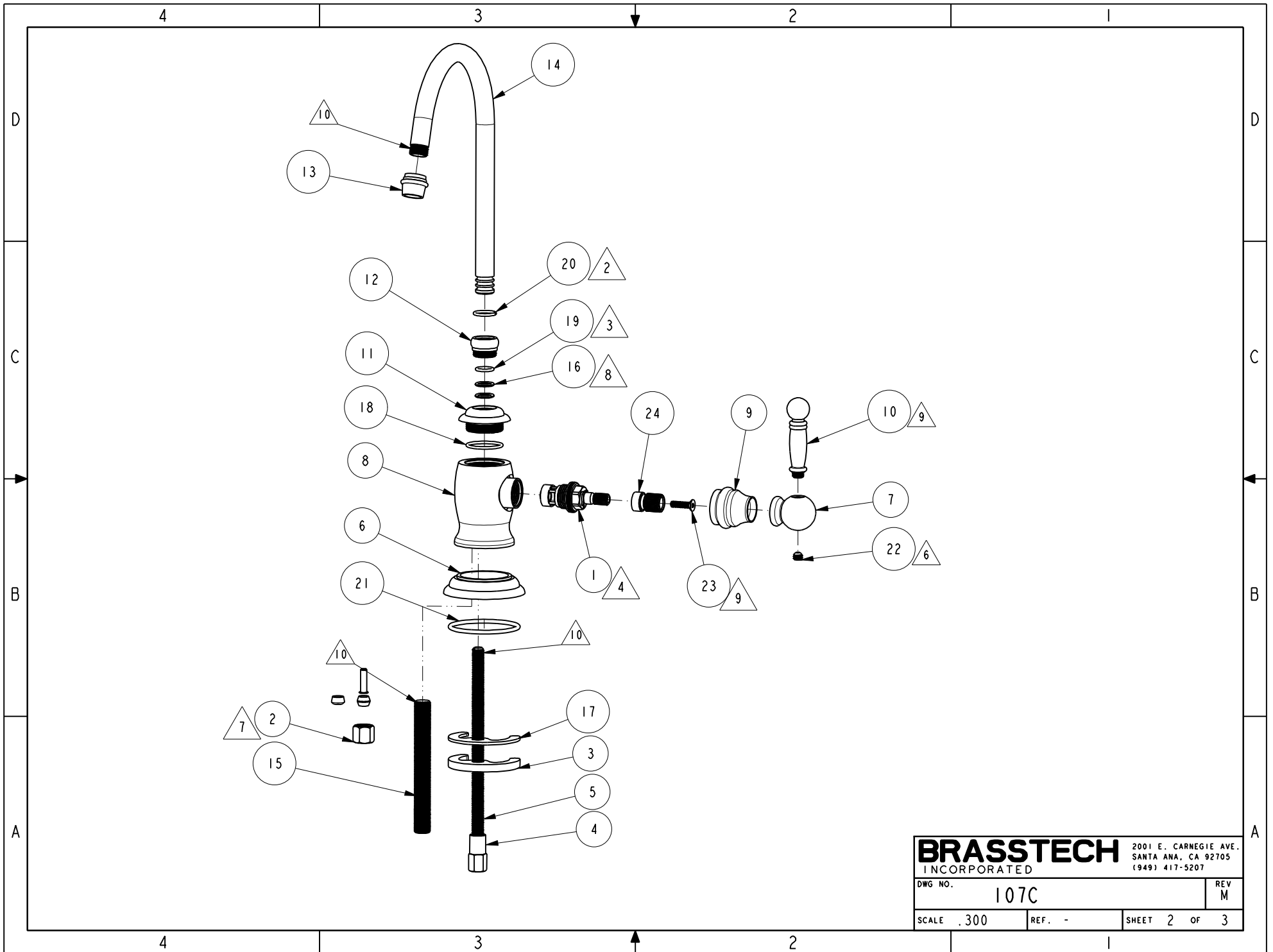
107C

REV
 M

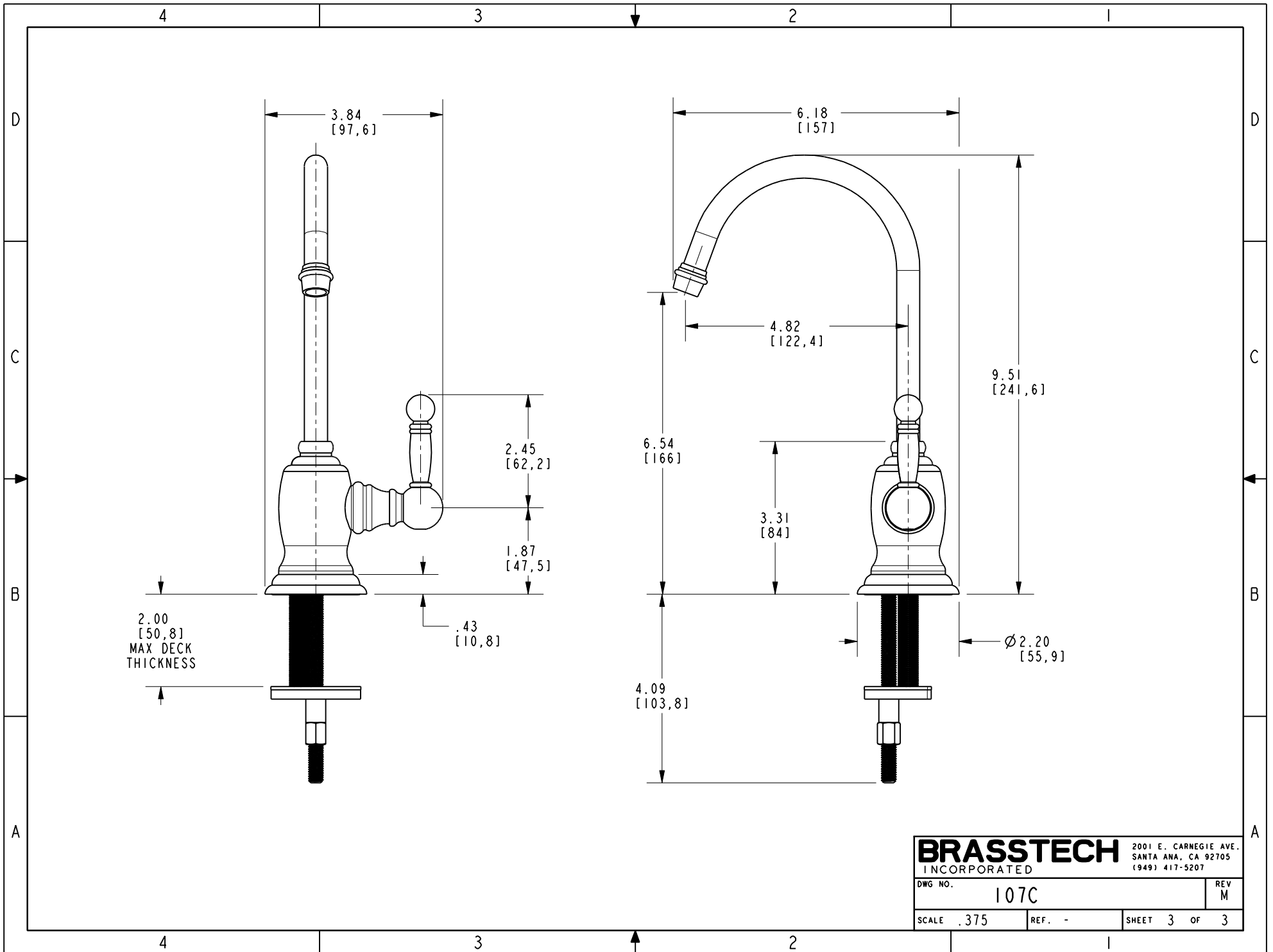
SCALE .300

REF. -

SHEET 1 OF 3



| | | | |
|------------------|------|--|--------|
| BRASSTECH | | 2001 E. CARNEGIE AVE. SANTA ANA, CA 92705 (949) 417-5207 | |
| DWG NO. | 107C | REV | M |
| SCALE | .300 | REF. | - |
| | | SHEET | 2 OF 3 |



| | | | |
|------------------|------|--|---|
| BRASSTECH | | 2001 E. CARNEGIE AVE. SANTA ANA, CA 92705 (949) 417-5207 | |
| DWG NO. | 107C | REV | M |
| SCALE | .375 | REF. | - |
| SHEET 3 | | OF 3 | |