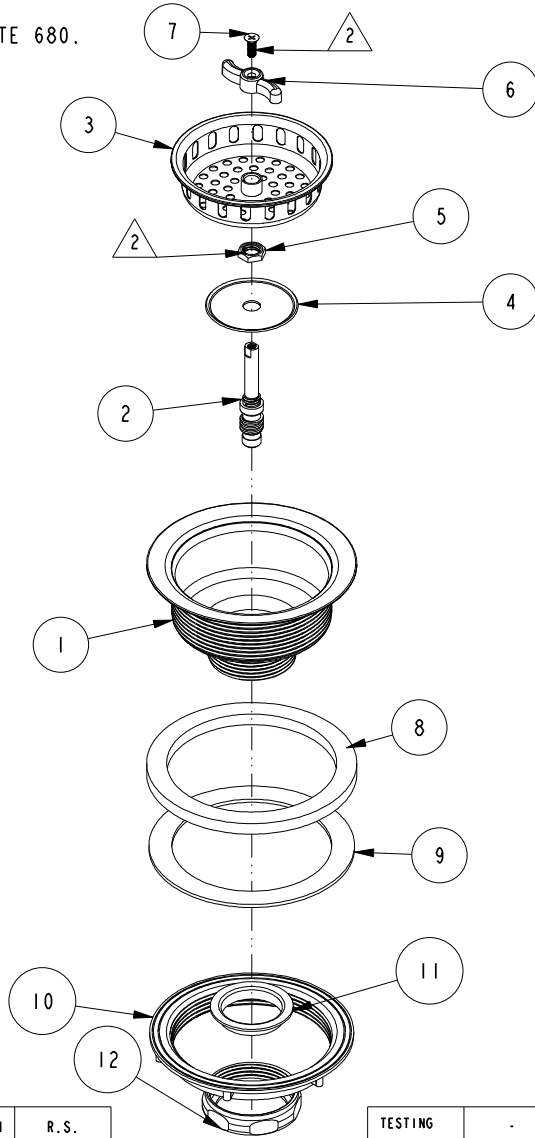


NOTES:

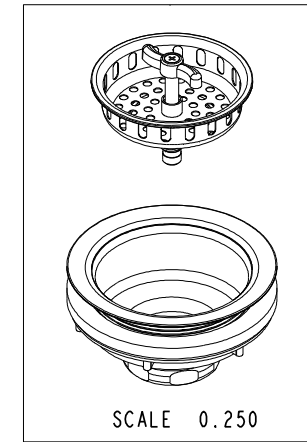
1. TO INSPECT ASSEMBLY, FOLLOW FIRST ARTICLE AND IN PROCESS INSPECTION SHEET.

2 APPLY LOCTITE 680.



BILL OF MATERIAL (CURRENT LEVEL)

ITEM	PT/ASSY	DESCRIPTION	TYPE	QTY.
1	20-303	BODY ASM, WING NUT	ASSEMBLY	1
2	51019	POST - WING TYPE	PART	1
3	51015	STRAINER - WING TYPE	PART	1
4	51016	STOPPER - WING TYPE	PART	1
5	51017	HEX NUT	PART	1
6	51039	WING NUT	PART	1
7	92865	SCRW, #5-32 X 3/8 PHL FT HD BRASS	PART	1
8	91714	GSKT RBR	PART	1
9	91716	GSKT, 3.325 ID X 4.275 OD X .08 THK FOAM	PART	1
10	51022	LOCKNUT 3 3/8	PART	1
11	91715	WASHER-PLASTIC	PART	1
12	51018	NUT SLIP JOINT 1-1/2	PART	1



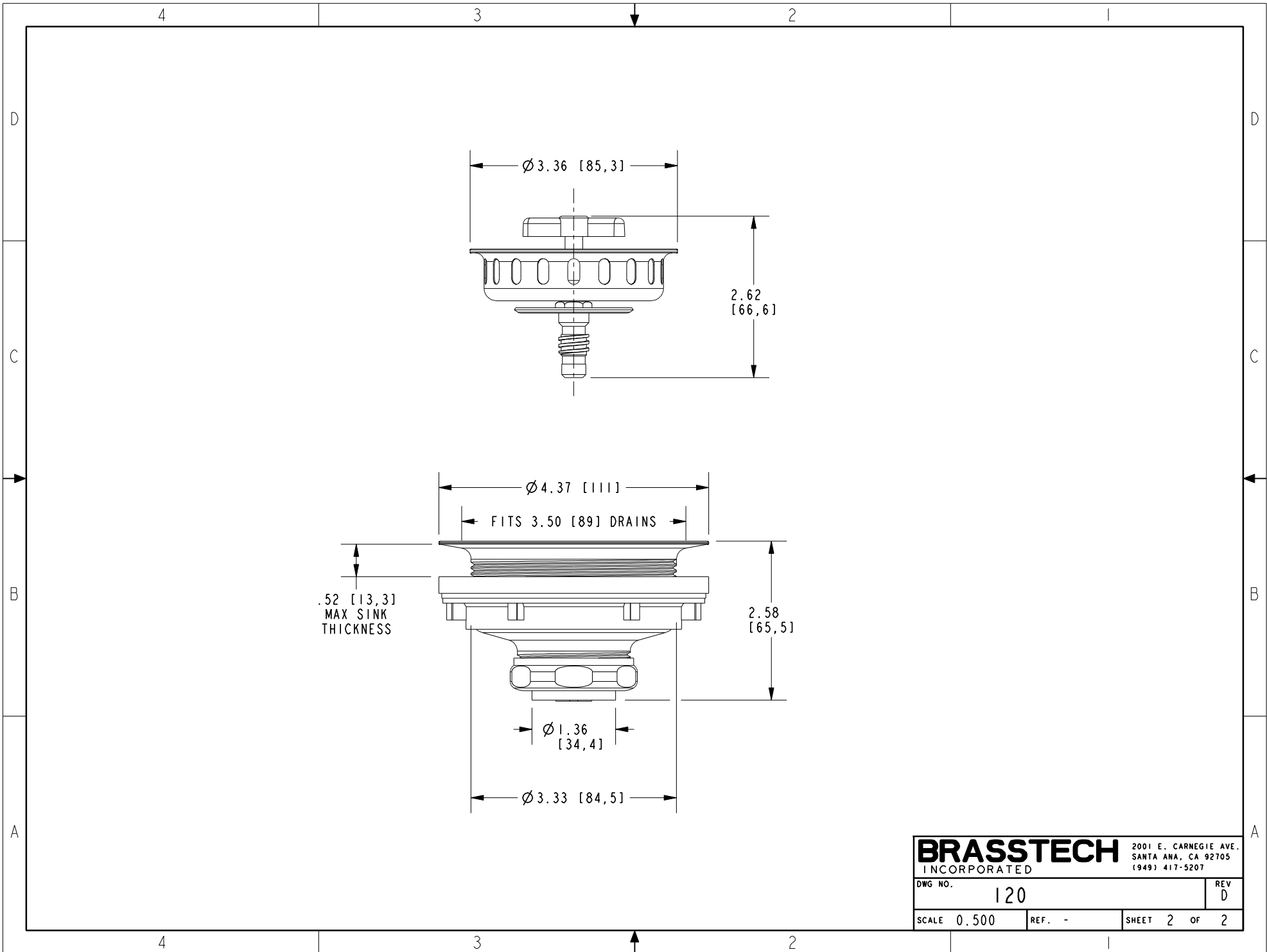
-	D	EN-340011	10/12/21	R.S.
-	C	EN-3401	12/18/12	N.S.
-	B	EN-2356	11/13/12	-
-	A	EN-2217a	10/05/12	-
-	-	RELEASED	PRE '95	-
ZONE	REV	DESCRIPTION	DATE	APPROVED

COPYRIGHT 2005 BRASSTECH, INC. THESE DRAWINGS AND THE DESIGNS DEPICTED HEREIN ARE THE PROPRIETARY PROPERTY OF BRASSTECH. ANY USE OR REPRODUCTION IS SUBJECT TO THE EXPRESS APPROVAL OF BRASSTECH. UNAUTHORIZED USE IS STRICTLY PROHIBITED. ALL RIGHTS RESERVED.

TESTING	-	-	-
ASSEMBLY	-	-	-
PLATING	-	-	-
POLISHING	-	NEXT ASSY	USED ON
MACHINING	-	APPLICATION	
TOOLING FIXTURE #	REMOVE ALL BURRS AND SHARP EDGES		

UNITS ARE: INCHES [MM]	
TOLERANCES ARE:	
FRACTIONS	DECIMALS
±1/16"	.X ±.1 [2.5]
	.XX ±.06 [1.5]
ANGLES ±1°	
(X.XXX) DENOTES CRITICAL DIMS.	
ALL THREADS ARE CRITICAL	
DRAWN	R.S. 10/11/21
CHECKED	R.S. 10/11/21
APPROVED	10/11/21 10/11/21

BRASSTECH		2001 CARNEGIE AVE. SANTA ANA, CA 92705 (949) 417-5207	
INCORPORATED			
LARGE BASKET STRAINER			
DWG NO.		REV	
120		D	
SCALE	REF.	SHEET	OF
0.250	-	1	2



BRASSTECH		2001 E. CARNEGIE AVE. SANTA ANA, CA 92705 (949) 417-5207	
DWG NO.	120	REV	D
SCALE	0.500	REF.	-
SHEET		2	OF 2