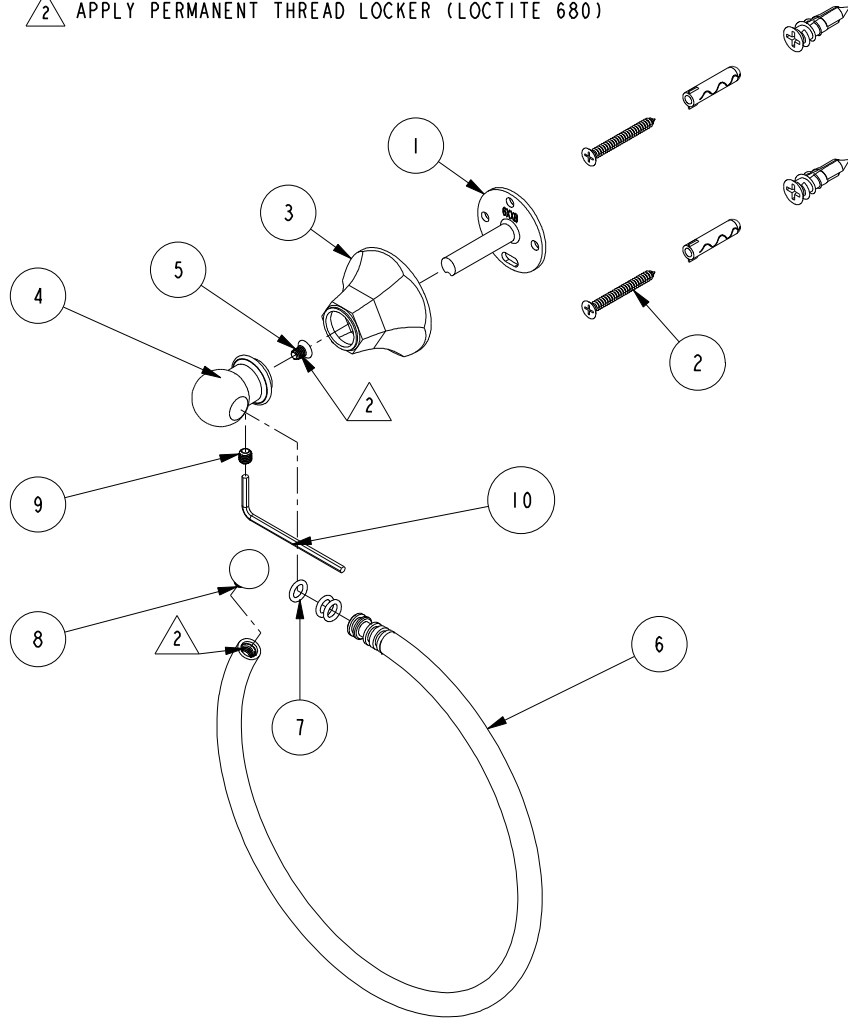


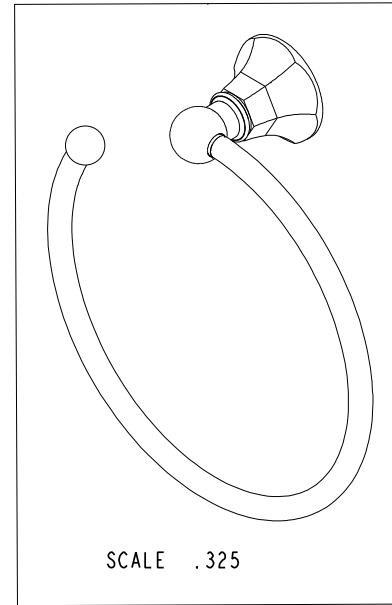
NOTES:

(N1) 1. FIT / FORM / FUNCTION SHALL FOLLOW PS-E.008.

△ 2 APPLY PERMANENT THREAD LOCKER (LOCTITE 680)



BILL OF MATERIAL (CURRENT LEVEL)				
ITEM	PT/ASSY	DESCRIPTION	TYPE	QTY.
1	6XXB	MOUNTING BRACKET	PART	1
2	1-206	HARDWARE PACK	ASSEMBLY	1
3	600B	HEX CONE - SMALL	PART	1
4	40814	POST - OPEN TOWEL RING	PART	1
5	92820	SCRW, 8-32 X 1/4 PHL FT HD SS	PART	1
6	7-759	TOWEL RING	ASSEMBLY	1
7	91049	O-RING, #2- 010, EPDM, 65-75 DURO, NSF 61	PART	3
8	40754	FINIAL	PART	1
9	92308	SCRW, M5 X 5 SKT HD CUP PT W/ SELF LOC SS	PART	1
10	10888	HEX KEY, 2.5MM ALLOY STEEL	PART	1



TESTING	-	-	-
ASSEMBLY	-	-	-
PLATING	-	-	-
POLISHING	-	NEXT ASSY	USED ON
MACHINING	-	APPLICATION	
TOOLING FIXTURE #	REMOVE ALL BURRS AND SHARP EDGES		

UNITS ARE: INCHES [MM]  
 TOLERANCES ARE:  
 FRACTIONS DECIMALS ANGLES  
 $\pm 1/16"$  .X  $\pm .1$  [2.5]  $\pm 1^\circ$   
 .XX  $\pm .06$  [1.5]  
 (X.XXX) DENOTES CRITICAL DIMS.  
 ALL THREADS ARE CRITICAL  
 DRAWN R.S. 08/15/19  
 CHECKED J.M. 08/15/19  
 APPROVED J.M. 08/15/19

**BRASSTECH** 2001 CARNEGIE AVE.  
 INCORPORATED SANTA ANA, CA 92705  
 (949) 417-5207

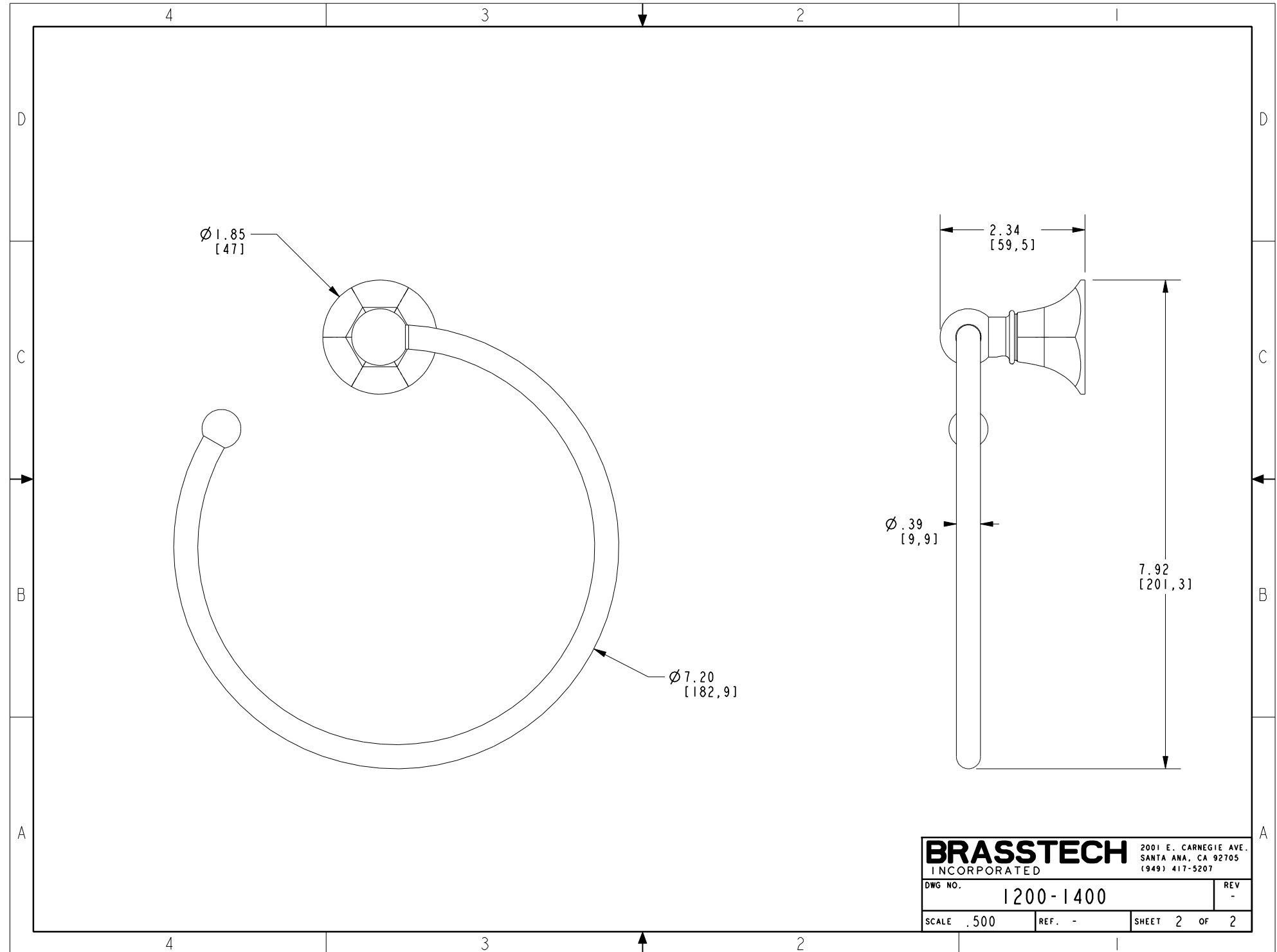
**OPEN TOWEL RING**

DWG NO. 1200-1400 REV -

SCALE .325 REF. - SHEET 1 OF 2

COPYRIGHT 2005 BRASSTECH, INC.  
 THESE DRAWINGS AND THE DESIGNS  
 DEPICTED HEREIN ARE THE PROPRIETARY  
 PROPERTY OF BRASSTECH. ANY USE  
 OR REPRODUCTION IS SUBJECT TO  
 THE EXPRESS APPROVAL OF BRASSTECH.  
 UNAUTHORIZED USE IS STRICTLY  
 PROHIBITED. ALL RIGHTS RESERVED.

-	-	EN-3913	08/15/19	J.M.
ZONE	REV	DESCRIPTION	DATE	APPROVED



Ø 1.85  
[47]

Ø 7.20  
[182,9]

2.34  
[59,5]

Ø .39  
[9,9]

7.92  
[201,3]

<b>BRASSTECH</b>		2001 E. CARNEGIE AVE. SANTA ANA, CA 92705 (949) 417-5207	
DWG NO.	1200-1400	REV	-
SCALE	.500	REF.	-
		SHEET	2 OF 2