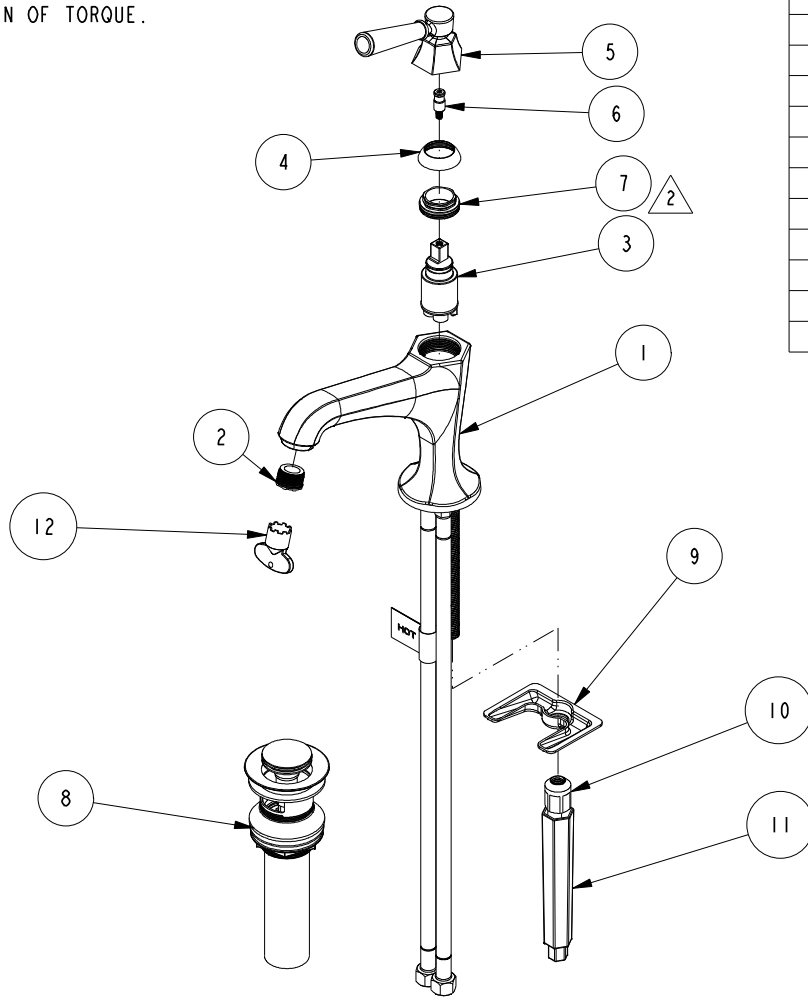


NOTES:

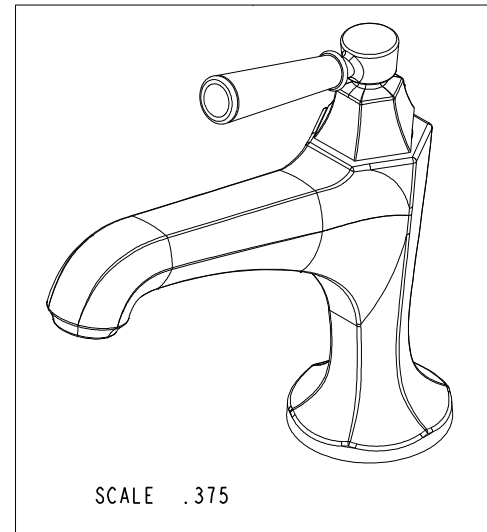
1. TO INSPECT ASSEMBLY, FOLLOW FIRST ARTICLE AND IN PROCESS INSPECTION SHEET.

2. APPLY 50-60 LB-IN OF TORQUE.



BILL OF MATERIAL (CURRENT LEVEL)

ITEM	PT/ASSY	DESCRIPTION	TYPE	QTY.
1	2-823	SPOUT BODY ASM	ASSEMBLY	1
2	12407	CACHE AERATOR INSERT, TINY Jr. SIZE, 1.2 GPM	PART	1
3	1-259	MIXING VALVE - FX25	ASSEMBLY	1
4	12034	DECORATIVE CAP	PART	1
5	2-819	LEVER ASM	ASSEMBLY	1
6	12005	STEM ADAPTOR	PART	1
7	1-275	CARTRIDGE RETAINER ASSEMBLY	ASSEMBLY	1
8	330	DRAIN, PUSH DOWN, W/ OVERFLOW	ASSEMBLY	1
9	11280	MOUNTING BRACKET	PART	1
10	11285	MOUNTING NUT	PART	1
11	92297	INSTALLATION TOOL, WRENCH	PART	1
12	91571	AERATOR KEY	PART	1



-	E	EN-4300m	02/11/21	R.S.
-	D	EN-3718	10/01/18	C.G.
-	C	EN-3601	05/07/18	V.V.
-	B	EN-2896c	05/24/16	J.A
-	A	EN-2643	01/15/16	J.M
-	-	EN-1883	04/11/12	-
ZONE	REV	DESCRIPTION	DATE	APPROVED

COPYRIGHT 2005 BRASSTECH, INC. THESE DRAWINGS AND THE DESIGNS DEPICTED HEREIN ARE THE PROPRIETARY PROPERTY OF BRASSTECH. ANY USE OR REPRODUCTION IS SUBJECT TO THE EXPRESS APPROVAL OF BRASSTECH. UNAUTHORIZED USE IS STRICTLY PROHIBITED. ALL RIGHTS RESERVED.

TESTING	-	-	-
ASSEMBLY	-	-	-
PLATING	-	-	-
POLISHING	-	NEXT ASSY	USED ON
MACHINING	-	APPLICATION	
TOOLING FIXTURE #	REMOVE ALL BURRS AND SHARP EDGES		

UNITS ARE: INCHES [MM]		
TOLERANCES ARE:		
FRACTIONS	DECIMALS	ANGLES
±1/16"	.X ±.1 [2.5]	±1°
	.XX ±.06 [1.5]	
(X.XXX) DENOTES CRITICAL DIMS.		
ALL THREADS ARE CRITICAL		
DRAWN	AMARISH	05/24/16
CHECKED	JINSON	05/24/16
APPROVED	J.A	05/24/16

BRASSTECH		2001 CARNEGIE AVE. SANTA ANA, CA 92705 (949) 417-5207	
INCORPORATED			
SINGLE HOLE LAVATORY FAUCET			
DWG NO.		REV	
1203		E	
SCALE	REF.	SHEET	OF
.187	-	1	2

FULL HOT
POSITION

FULL COLD
POSITION

6.84
[173,9]

APPROX.
30.00 [762]
LENGTH

Ø 2.30
[58,4]

2X 3/8" O.D. COMPRESSION
(9/16-24 UNEF)

7.23 [183,8]

(8.02)
[203,6]

4.32
[109,8]

5.59 [141,9]

3.95 [100,3]
MAX DECK
THICKNESS

BRASSTECH

2001 CARNEGIE AVE.
SANTA ANA, CA 92705
(949) 417-5207

INCORPORATED

DWG NO.

1203

REV

E

SCALE .375

REF. -

SHEET 2 OF 2