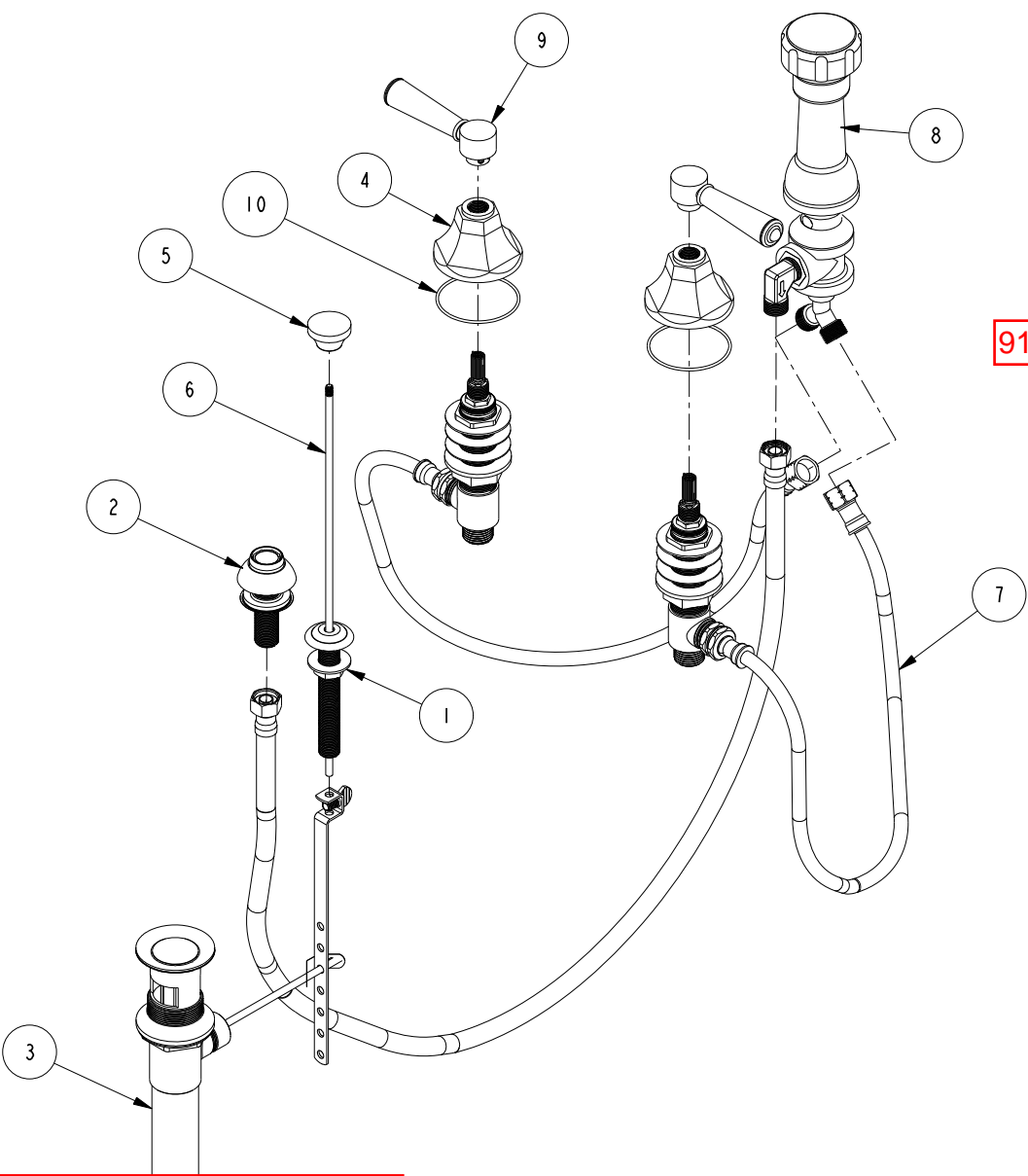


4 3 2 1

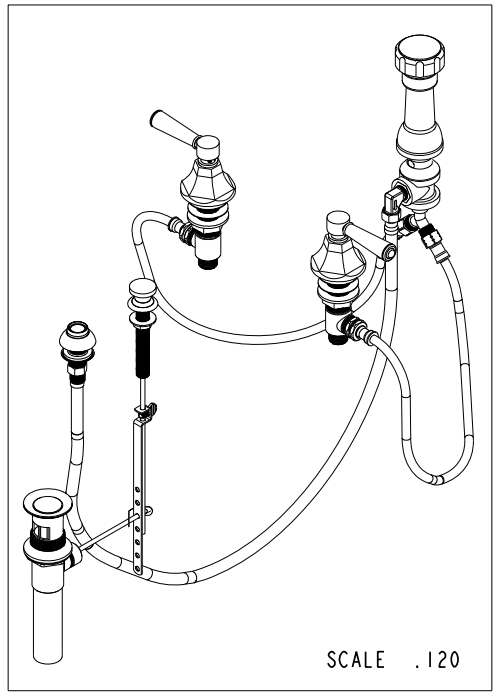
D  
C  
B  
A



**BILL OF MATERIAL (CURRENT LEVEL)**

ITEM	PT/ASSY	DESCRIPTION	TYPE	QTY.
1	2-159	POP-UP ROD GUIDE ASSEMBLY	ASSEMBLY	1
2	2-236	DOUCHE SPRAY ASSEMBLY	ASSEMBLY	1
3	325	POP UP ASSEMBLY	ASSEMBLY	1
4	10960	HEX ESCUTCHEON	PART	2
5	10961	SMOOTH POP - UP KNOB	PART	1
6	10288	3/16" POP UP ROD	PART	1
7	1-542	VALVE KIT - BIDET	ASSEMBLY	1
8	2-235	BIDET DIVERTER / V. BRE	ASSEMBLY	1
9	2-279	TAPERED LEVER HNDL ASM	ASSEMBLY	2
<del>10</del>	<del>91386</del>	O-RING, #2-034, EPDM, 65-75 DURO	PART	2

91754



D  
C  
B  
A

**REV C EN-3722 02/08/2019 CG**

**BRASSTECH** INCORPORATED  
 2001 E. CARNEGIE AVE.  
 SANTA ANA, CA 92705  
 (949) 417-5207

BIDET

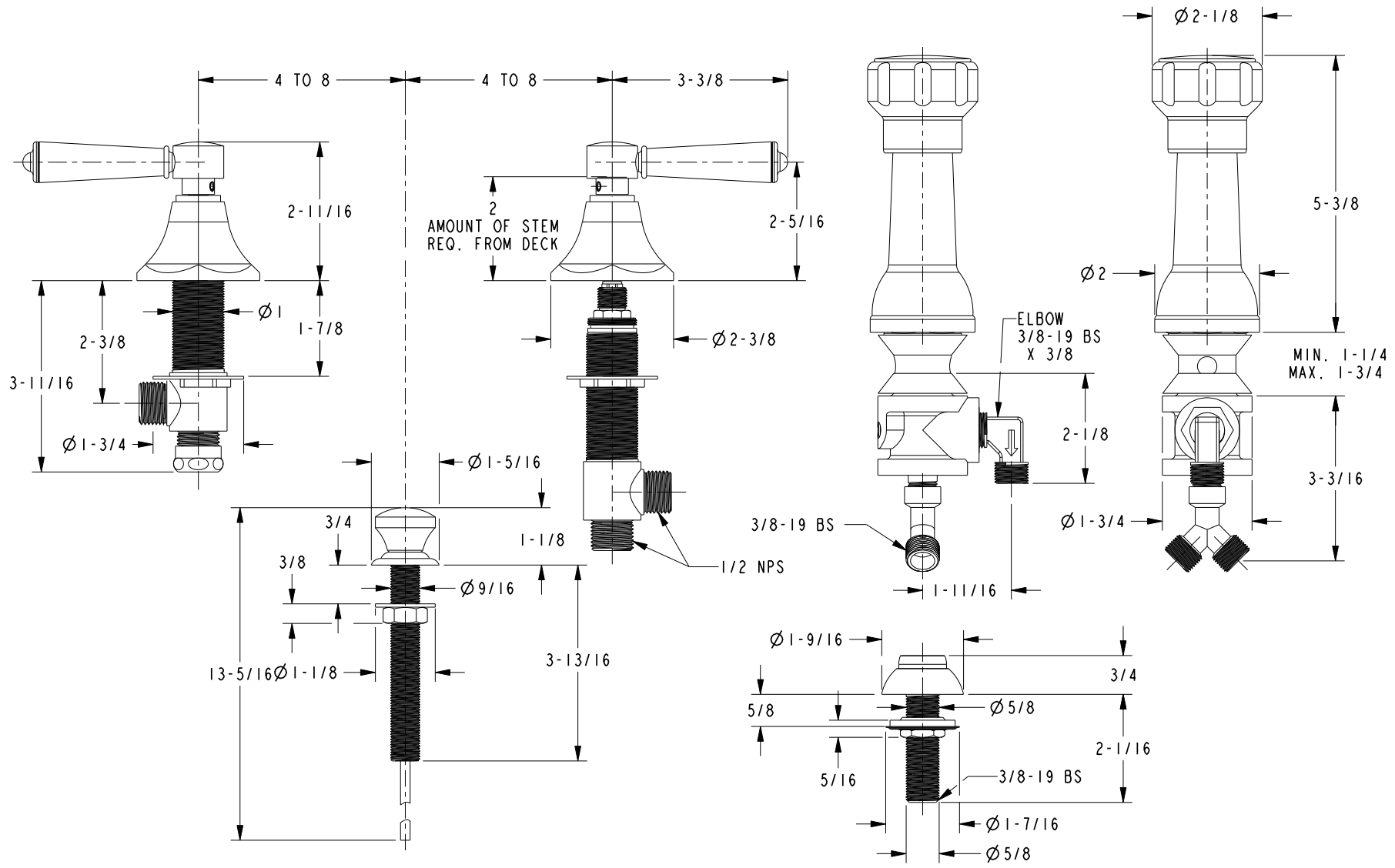
ASSY. NO. 1209

SCALE .200 REF. - SHEET 1 OF 2

B	EN-2266	04/09/13
A	EO-0009	-
-	RELEASED	-
REV	REV DESC	DATE

4 3 2 1

**SPECIFICATION DWG**



DIMENSIONS ARE IN INCHES AND AN APPROXIMATION OF A TYPICAL INSTALLATION

COPYRIGHT 2005 BRASSTECH, INC. THESE DRAWINGS AND THE DESIGNS DEPICTED HEREIN ARE THE PROPRIETARY PROPERTY OF BRASSTECH. ANY USE OR REPRODUCTION IS SUBJECT TO THE EXPRESS APPROVAL OF BRASSTECH. UNAUTHORIZED USE IS STRICTLY PROHIBITED. ALL RIGHTS RESERVED.

**BRASSTECH** 2001 CARNEGIE AVE.  
INCORPORATED SANTA ANA, CA 92705  
(949) 417-5207

DWG NO.	1209	REV	B
SCALE	.350	REF.	-
SHEET	2	OF	2