

4

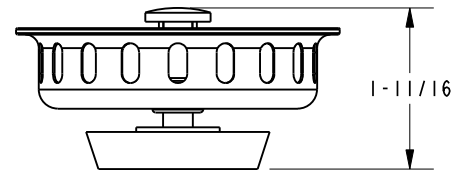
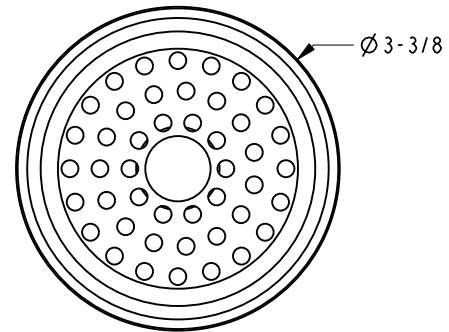
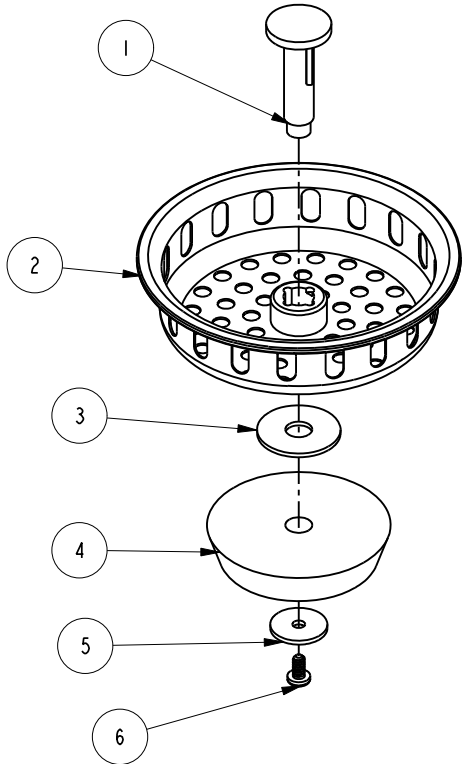
3

2

1

BILL OF MATERIAL (CURRENT LEVEL)

ITEM	PT/ASSY	DESCRIPTION	TYPE	QTY.
1	50089	POST	PART	1
2	50087	DRAIN BASKET	PART	1
3	50473	WSHR, .276 ID X .866 OD X .04 THK, FLT, BRASS	PART	1
4	50474	STOPPER RBR BLK	PART	1
5	50472	WSHR, .135 ID X .6 OD .04 THK, FLT, BRASS	PART	1
6	92085	SCRW, 5-40 X 1/4 PHIL PAN HD SS	PART	1



COPYRIGHT 2005 BRASSTECH, INC. THESE DRAWINGS AND THE DESIGNS DEPICTED HEREIN ARE THE PROPRIETARY PROPERTY OF BRASSTECH. ANY USE OR REPRODUCTION IS SUBJECT TO THE EXPRESS APPROVAL OF BRASSTECH. UNAUTHORIZED USE IS STRICTLY PROHIBITED. ALL RIGHTS RESERVED.

BRASSTECH
INCORPORATED

2001 CARNEGIE AVE.
SANTA ANA, CA 92705
(949) 417-5207

BASKET ONLY W/POST

ASSY. NO. 121-2		-	-	-
SCALE .500	REF. -	SHEET 1	OF 1	REV
		EN-2537	05/16/13	DATE

4

3

2

1