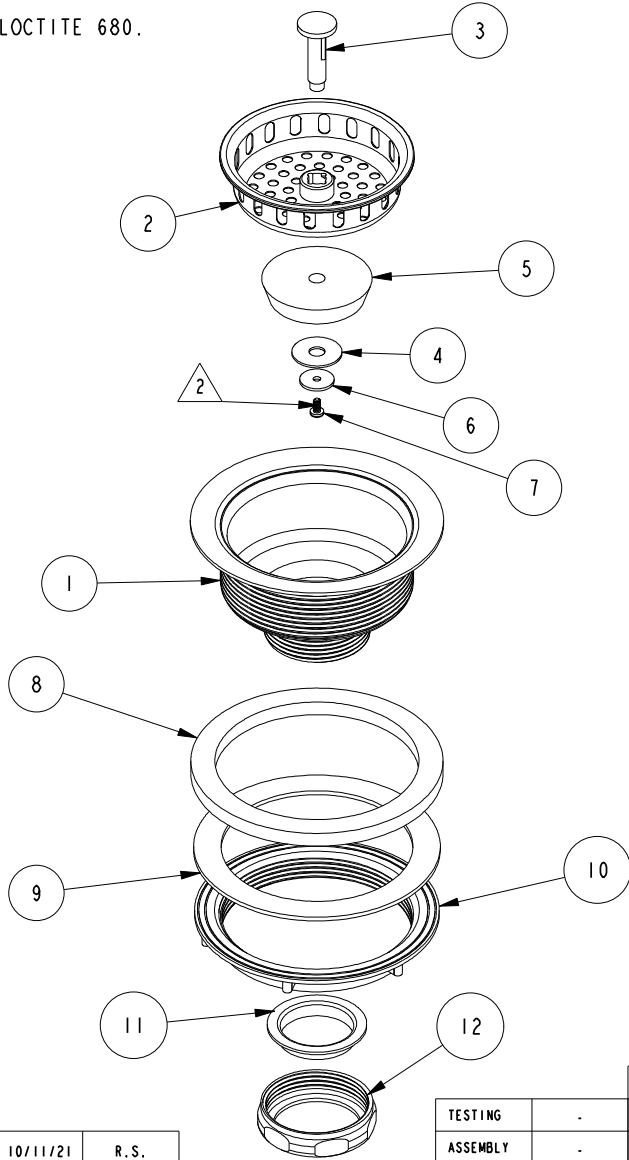


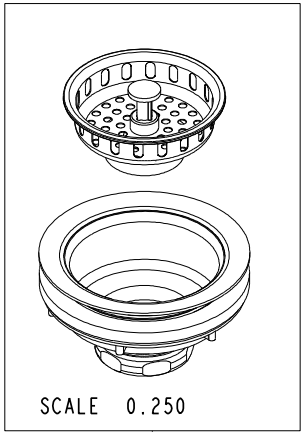
NOTES:

1. TO INSPECT ASSEMBLY, FOLLOW FIRST ARTICLE AND IN PROCESS INSPECTION SHEET.

2 APPLY LOCTITE 680.



BILL OF MATERIAL (CURRENT LEVEL)				
ITEM	PT/ASSY	DESCRIPTION	TYPE	QTY.
1	51023	FLANGE HOUSING	PART	1
2	51024	DRAIN BASKET	PART	1
3	51025	POST	PART	1
4	51027	WSHR, .276 ID X .866 OD X .04 THK, FLT, BRASS	PART	1
5	51028	STOPPER RBR BLK	PART	1
6	51026	WSHR, .135 ID X .6 OD .04 THK, FLT, BRASS	PART	1
7	92866	SCRW, 5-40 X 1/4 PHIL PAN HD SS	PART	1
8	91714	GSKT RBR	PART	1
9	91716	GSKT, 3.325 ID X 4.275 OD X .08 THK FOAM	PART	1
10	51022	LOCKNUT 3 3/8	PART	1
11	91715	WASHER-PLASTIC	PART	1
12	51018	NUT SLIP JOINT 1-1/2	PART	1



ZONE	REV	DESCRIPTION	DATE	APPROVED
-	C	EN-430011	10/11/21	R. S.
-	B	-	07/13/17	-
-	A	EN-2709	02/26/14	-
-	-	RELEASED	PRE '95	-

COPYRIGHT 2005 BRASSTECH, INC. THESE DRAWINGS AND THE DESIGNS DEPICTED HEREIN ARE THE PROPRIETARY PROPERTY OF BRASSTECH. ANY USE OR REPRODUCTION IS SUBJECT TO THE EXPRESS APPROVAL OF BRASSTECH. UNAUTHORIZED USE IS STRICTLY PROHIBITED. ALL RIGHTS RESERVED.

TESTING	-	-	-
ASSEMBLY	-	-	-
PLATING	-	-	-
POLISHING	-	NEXT ASSY	USED ON
MACHINING	-	APPLICATION	
TOOLING FIXTURE #	REMOVE ALL BURRS AND SHARP EDGES		

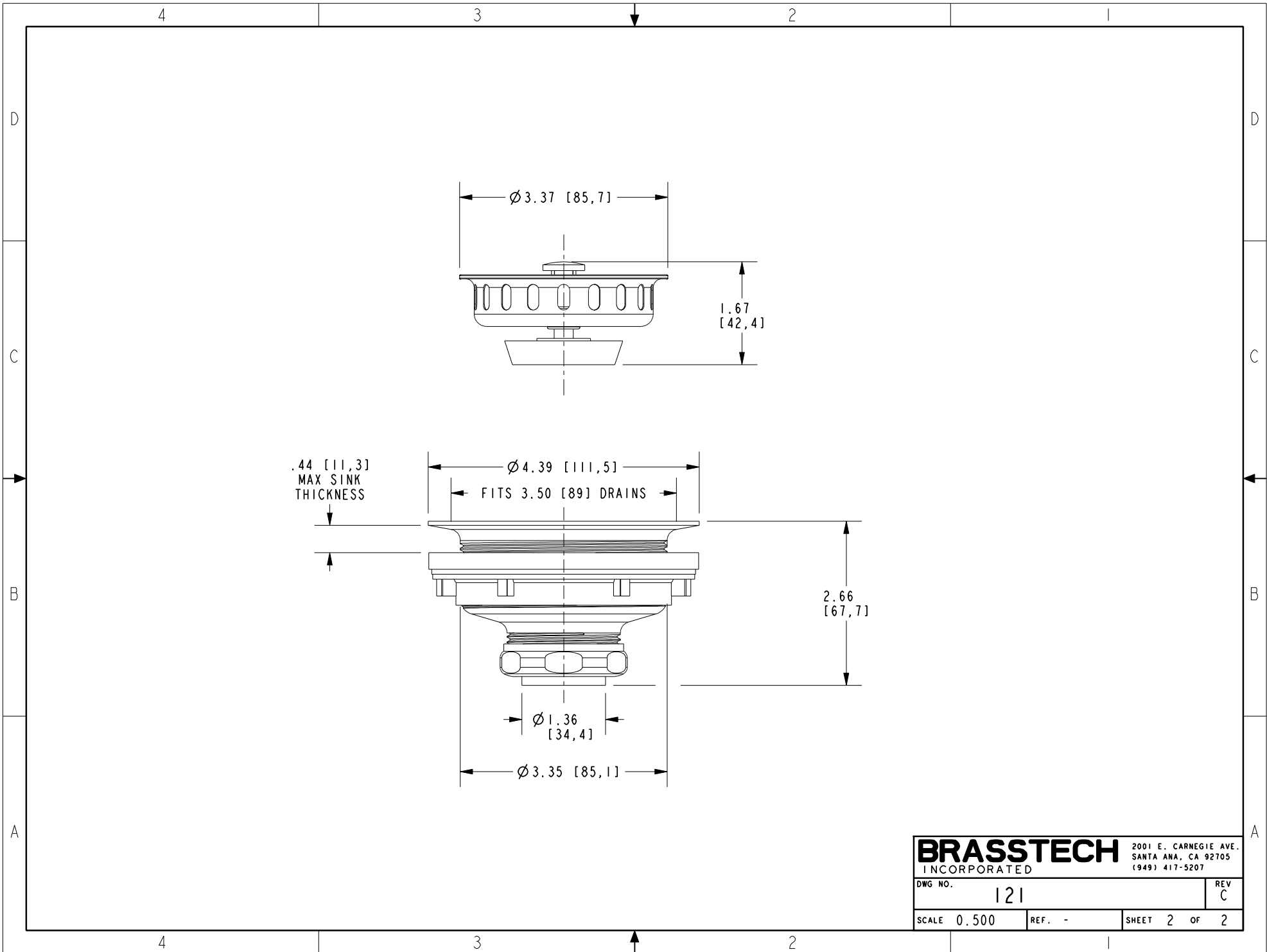
UNITS ARE: INCHES [MM]	
TOLERANCES ARE:	
FRACTIONS	DECIMALS
±1/16"	.X ±.1 [2.5]
	.XX ±.06 [1.5]
(X.XXX) DENOTES CRITICAL DIMS.	
ALL THREADS ARE CRITICAL	
DRAWN	-
CHECKED	-
APPROVED	-

**BRASSTECH** 2001 CARNEGIE AVE. SANTA ANA, CA 92705 (949) 417-5207  
INCORPORATED

**LARGE BASKET STRAINER**

DWG NO. 121 REV C

SCALE 0.300 REF. - SHEET 1 OF 2



<b>BRASSTECH</b>		2001 E. CARNEGIE AVE. SANTA ANA, CA 92705 (949) 417-5207	
DWG NO.	121	REV	C
SCALE	0.500	REF.	-
SHEET		2	OF 2