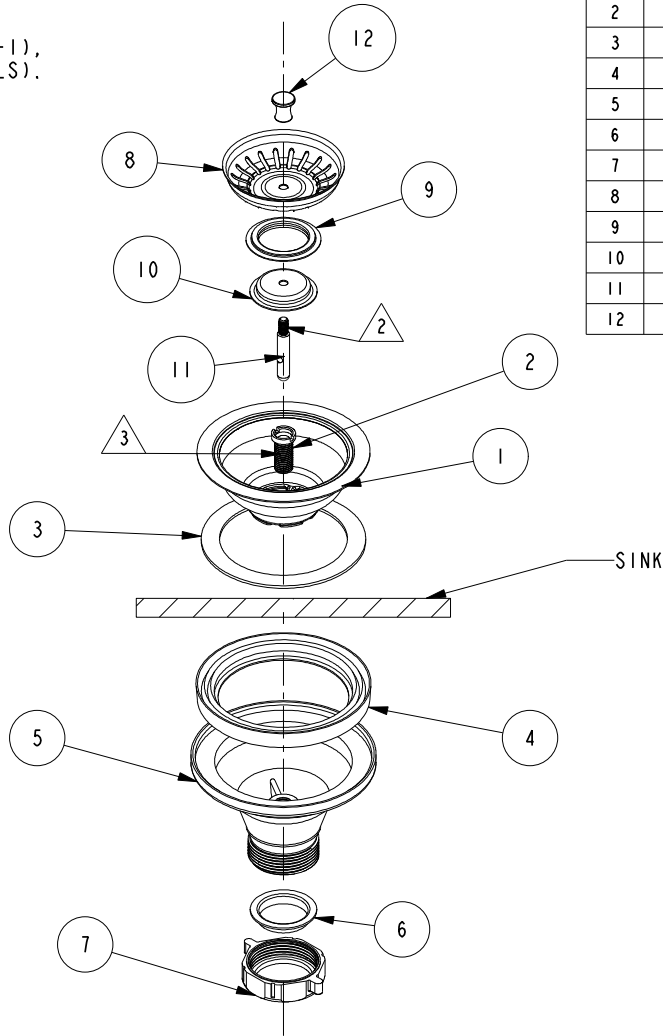


NOTES:

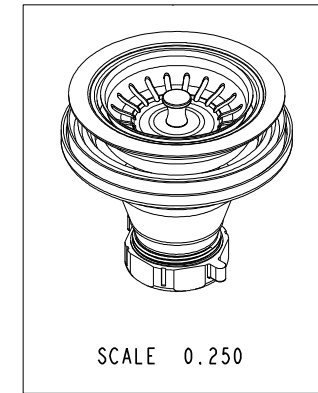
1. TO INSPECT ASSEMBLY, FOLLOW FIRST ARTICLE AND IN PROCESS INSPECTION SHEET.

2. APPLY LOCTITE 680 OR EQUIVALENT.

3. 13/16" LONGER AVAILABLE (PN. 50092-1),
(SUPPLIED WITH COMPLETE ASM 122LS).



BILL OF MATERIAL (CURRENT LEVEL)				
ITEM	PT/ASSY	DESCRIPTION	TYPE	QTY.
1	51029	DRAIN BASKET BODY	PART	1
2	51030	BOLT THRU HOLE	PART	1
3	91716	GSKT, 3.325 ID X 4.275 OD X .08 THK FOAM	PART	1
4	91718	GASKET	PART	1
5	51038	FLANGE HOUSING	PART	1
6	91715	WASHER-PLASTIC	PART	1
7	51031	LOCKNUT / 1-1/2 PLS	PART	1
8	51032	DRAIN BASKET	PART	1
9	91717	GASKET-STOPPER	PART	1
10	51035	FLANGE STOPPER	PART	1
11	5-062	POST ASM	ASSEMBLY	1
12	51033	POP-UP KNOB	PART	1



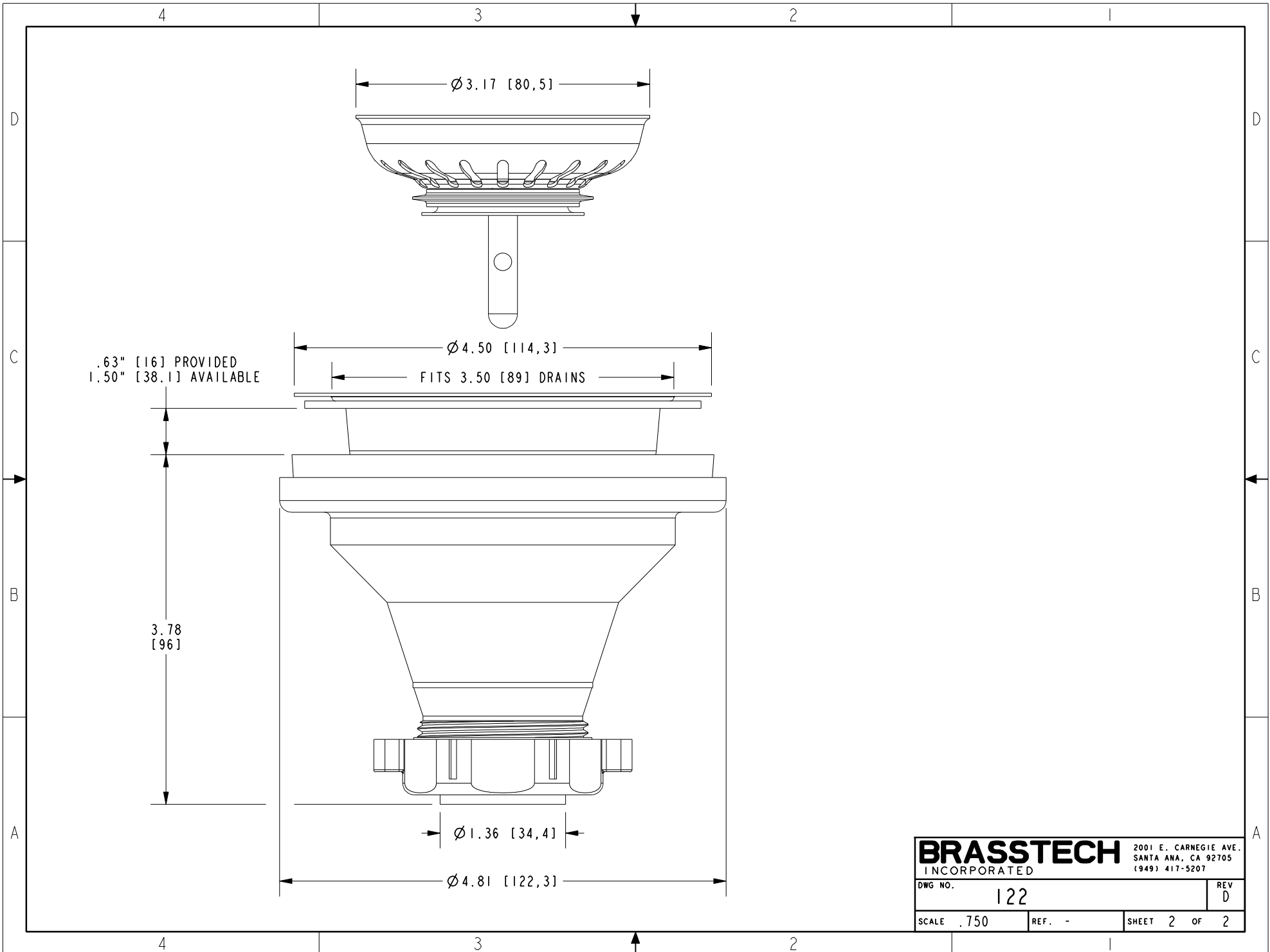
-	D	EN-430011	10/11/21	R. S.
-	C	-	-	-
-	B	-	-	-
-	A	EN-1966	11/14/11	-
-	-	RELEASED	10/01/98	-
ZONE	REV	DESCRIPTION	DATE	APPROVED

COPYRIGHT 2005 BRASSTECH, INC. THESE DRAWINGS AND THE DESIGNS DEPICTED HEREIN ARE THE PROPRIETARY PROPERTY OF BRASSTECH. ANY USE OR REPRODUCTION IS SUBJECT TO THE EXPRESS APPROVAL OF BRASSTECH. UNAUTHORIZED USE IS STRICTLY PROHIBITED. ALL RIGHTS RESERVED.

TESTING	-	-	-
ASSEMBLY	-	-	-
PLATING	-	-	-
POLISHING	-	NEXT ASSY	USED ON
MACHINING	-	APPLICATION	
TOOLING FIXTURE #	REMOVE ALL BURRS AND SHARP EDGES		

UNITS ARE: INCHES [MM]	
TOLERANCES ARE:	
FRACTIONS	DECIMALS
±1/16"	.X ±.1 [2.5]
	.XX ±.06 [1.5]
ANGLES ±1°	
(X.XXX) DENOTES CRITICAL DIMS.	
ALL THREADS ARE CRITICAL	
DRAWN	-
CHECKED	-
APPROVED	-

BRASSTECH		2001 CARNEGIE AVE. SANTA ANA, CA 92705 (949) 417-5207	
INCORPORATED			
DRAIN ASM			
DWG NO.		REV	
122		D	
SCALE	REF.	SHEET	OF
.200	-	1	2



BRASSTECH		2001 E. CARNEGIE AVE. SANTA ANA, CA 92705 (949) 417-5207	
DWG NO.	122	REV	D
SCALE	.750	REF.	-
SHEET		2	OF 2