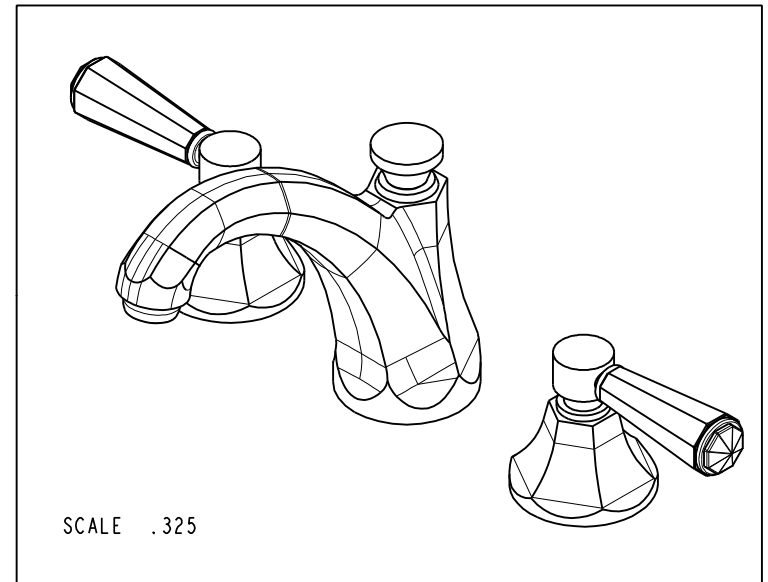
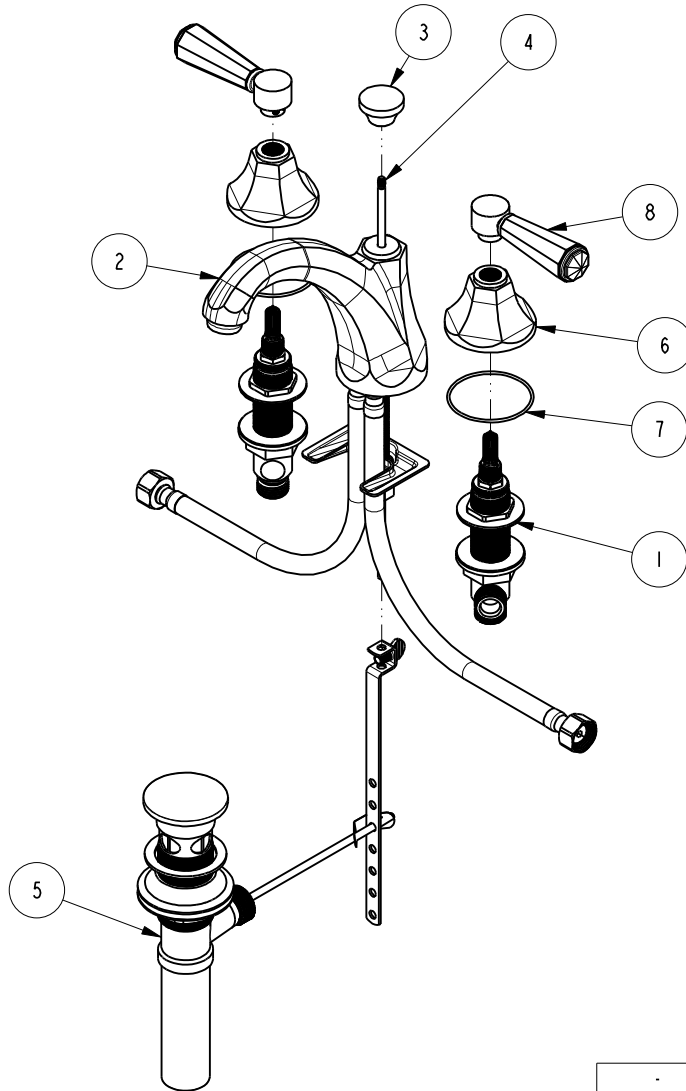


NOTES:

1. TO INSPECT ASSEMBLY, FOLLOW FIRST ARTICLE AND IN PROCESS INSPECTION SHEET.

BILL OF MATERIAL (CURRENT LEVEL)

ITEM	PT/ASSY	DESCRIPTION	TYPE	QTY.
1	1-525	W/S VALVE ASM	ASSEMBLY	1
2	3-539	SPOUT ASM	ASSEMBLY	1
3	10961	SMOOTH POP - UP KNOB	PART	1
4	10288	3/16" POP UP ROD	PART	1
5	325	POP UP ASSEMBLY	ASSEMBLY	1
6	10960	HEX ESCUTCHEON	PART	2
7	91754	O-RING, #2-034, EPDM, 50 DURO - GREY	PART	2
8	2-876	CRYSTAL HANDLE LEVER ASM	ASSEMBLY	2



UNITS ARE: INCHES [MM]
 TOLERANCES ARE:
 FRACTIONS DECIMALS ANGLES
 ±1/16" .X ±.1 [2,5] ±1°
 .XX ±.06 [1,5]

(X.XXX) DENOTES CRITICAL DIMS.
 ALL THREADS ARE CRITICAL
 DRAWN JINSON 10/29/20
 CHECKED R.S. 10/29/20
 APPROVED R.S. 10/29/20

BRASSTECH 2001 CARNEGIE AVE.
 INCORPORATED SANTA ANA, CA 92705
 (949) 417-5207

WIDESPREAD FAUCET

DWG NO. 1230C REV C
 SCALE .200 REF. - SHEET 1 OF 2

ZONE	REV	DESCRIPTION	DATE	APPROVED
-	C	EN-4300m	10/29/20	R.S.
-	B	EN-3722	02/08/19	C.G.
-	A	EN-2963	10/22/15	AN
-	-	EN-2894	06/10/15	AN

COPYRIGHT 2005 BRASSTECH, INC.
 THESE DRAWINGS AND THE DESIGNS
 DEPICTED HEREIN ARE THE PROPRIETARY
 PROPERTY OF BRASSTECH. ANY USE
 OR REPRODUCTION IS SUBJECT TO
 THE EXPRESS APPROVAL OF BRASSTECH.
 UNAUTHORIZED USE IS STRICTLY
 PROHIBITED. ALL RIGHTS RESERVED.

TESTING	-	-	-
ASSEMBLY	-	-	-
PLATING	-	-	-
POLISHING	-	NEXT ASSY	USED ON
MACHINING	-	APPLICATION	
TOOLING FIXTURE #	REMOVE ALL BURRS AND SHARP EDGES		

