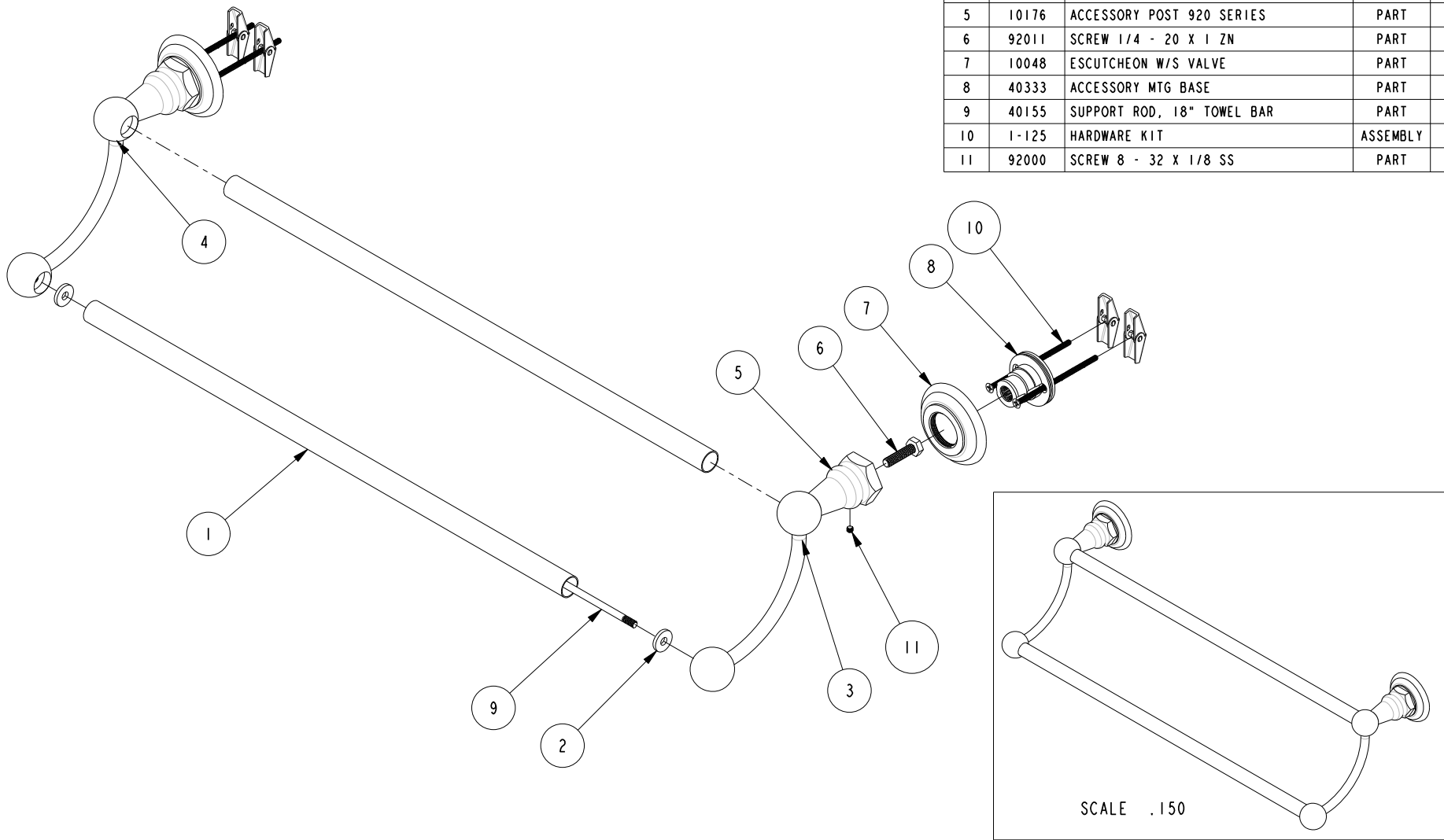


BILL OF MATERIAL (CURRENT LEVEL)				
ITEM	PT/ASSY	DESCRIPTION	TYPE	QTY.
1	10123	18 IN. TOWEL BAR	PART	2
2	91325	WASHER, FLAT	PART	2
3	7-547	DOUBLE TWL BAR POST ASSY (RIGHT)	ASSEMBLY	1
4	7-548	DOUBLE TWL BAR POST ASSY (LEFT)	ASSEMBLY	1
5	10176	ACCESSORY POST 920 SERIES	PART	2
6	92011	SCREW 1/4 - 20 X 1 ZN	PART	2
7	10048	ESCUTCHEON W/S VALVE	PART	2
8	40333	ACCESSORY MTG BASE	PART	2
9	40155	SUPPORT ROD, 18" TOWEL BAR	PART	1
10	1-125	HARDWARE KIT	ASSEMBLY	2
11	92000	SCREW 8 - 32 X 1/8 SS	PART	2



COPYRIGHT 2005 BRASSTECH, INC. THESE DRAWINGS AND THE DESIGNS DEPICTED HEREIN ARE THE PROPRIETARY PROPERTY OF BRASSTECH. ANY USE OR REPRODUCTION IS SUBJECT TO THE EXPRESS APPROVAL OF BRASSTECH. UNAUTHORIZED USE IS STRICTLY PROHIBITED. ALL RIGHTS RESERVED.

BRASSTECH
INCORPORATED
2001 E. CARNEGIE AVE.
SANTA ANA, CA 92705
(949) 417-5207

DOUBLE TOWEL BAR, 18" T4

ASSY. NO. 13-04

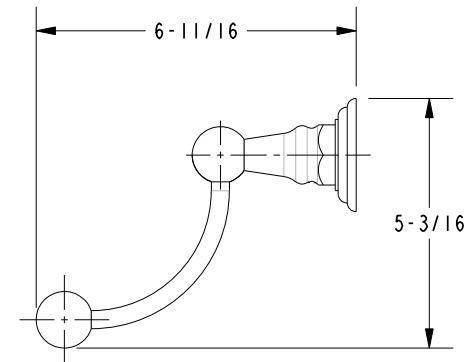
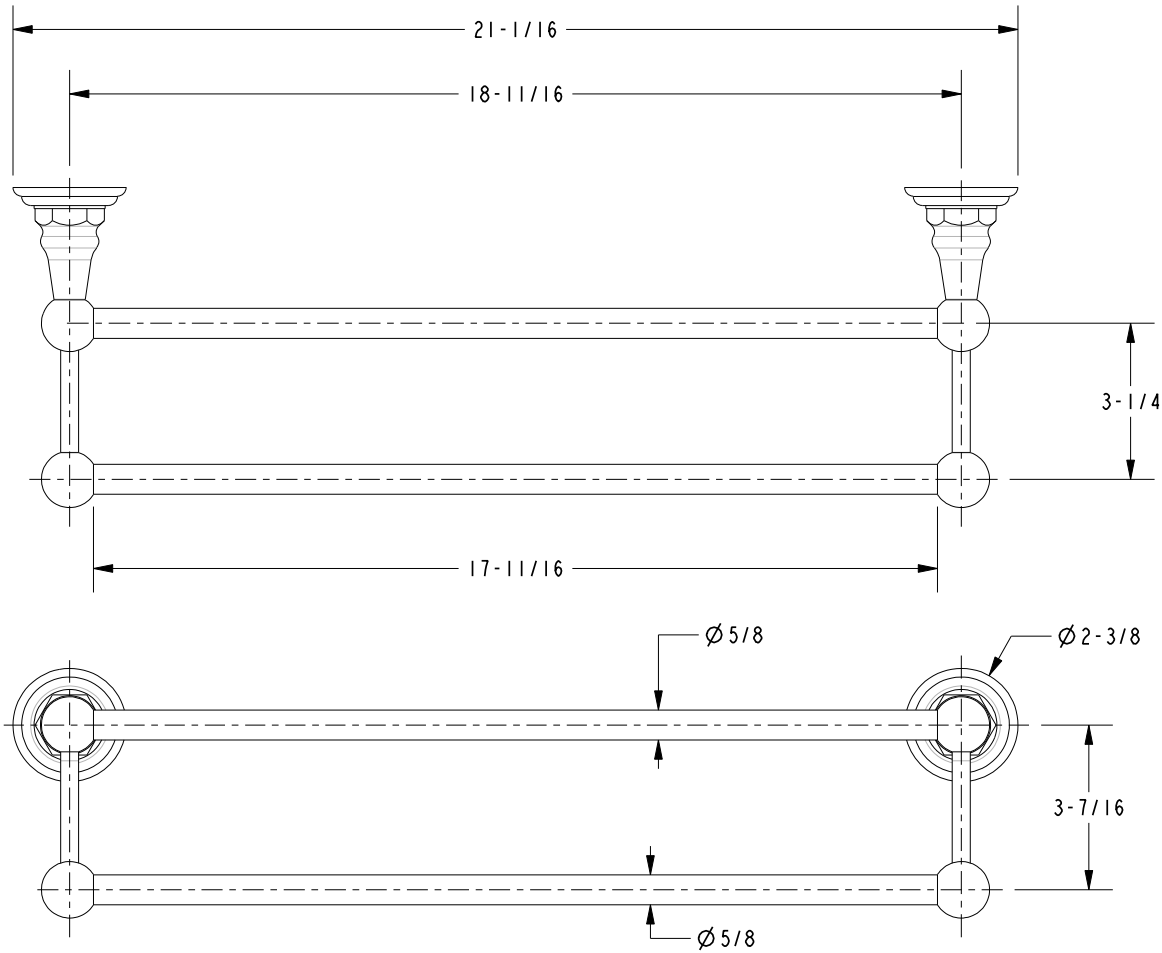
SCALE .250

REF. -

SHEET 1 OF 2

A	EN-1241	11/23/09
-	RELEASED	07/17/03
REV	REV DESC	DATE

SPECIFICATION DWG



DIMENSIONS ARE IN INCHES AND AN APPROXIMATION OF A TYPICAL INSTALLATION

COPYRIGHT 2005 BRASSTECH, INC. THESE DRAWINGS AND THE DESIGNS DEPICTED HEREIN ARE THE PROPRIETARY PROPERTY OF BRASSTECH. ANY USE OR REPRODUCTION IS SUBJECT TO THE EXPRESS APPROVAL OF BRASSTECH. UNAUTHORIZED USE IS STRICTLY PROHIBITED. ALL RIGHTS RESERVED.

BRASSTECH		2001 E. CARNEGIE AVE.	
INCORPORATED		SANTA ANA, CA 92705	
		(949) 417-5207	
DWG NO.	13-04	REV	A
SCALE	.250	REF.	-
		SHEET	2 OF 2