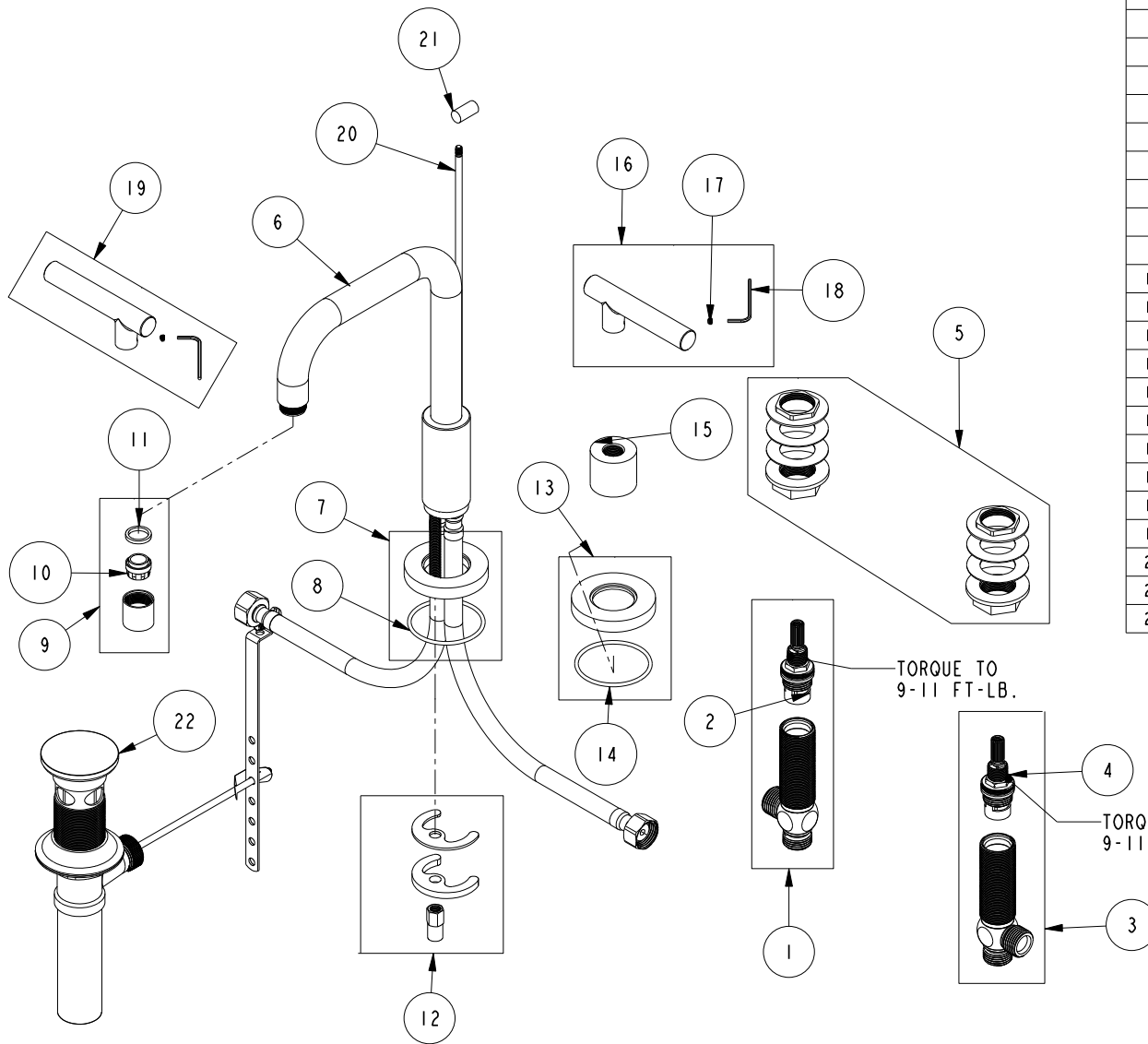


REPLACEMENT PARTS



ITEM	PT/ASSY	SPECIFY FINISH	DESCRIPTION
1	1-527		W/S CART/BODY ASM (HOT)
2	1-002		W/S CARTRIDGE - HOT
3	1-526		W/S CART/BODY ASM (COLD)
4	1-001		W/S CARTRIDGE - COLD
5	1-027		WIDE SPREAD MOUNTING HARDWARE
6	3-274	YES	WIDESPREAD SPOUT ASSY
7	2-101	YES	SPOUT BASE RING ASM
8	91753		O-RING, # 2-136, EP, 50 DURO - GREY
9	2-693	YES	AERATOR ASM
10	12403		AERATOR INSERT, Jr. SIZE, 1.2 GPM
11	91500		GSKT, .578 ID X .728 OD X .102 THK EPDM
12	1-491		SPOUT MOUNTING KIT
13	2-100	YES	ESCUTCHEON - ASSEMBLY
14	91753		O-RING, # 2-136, EP, 50 DURO - GREY
15	10620	YES	BONNET
16	2-111C	YES	HANDLE LEVER ASM, COLD
17	92000		SCREW 8 - 32 X 1/8 SS
18	10192		HEX KEY TOOL, #8 5/64
19	2-111H	YES	HANDLE LEVER ASM, HOT
20	10288	YES	3/16" POP UP ROD
21	10827	YES	POP-UP KNOB
22	325	YES	POP UP ASSEMBLY

**WIDESPREAD DECK FAUCET
1400L**

REV C EN-4728 11/06/23 APPROVED RS

NEWPORT BRASS.

t: 949.417.5207 | www.newportbrass.com