
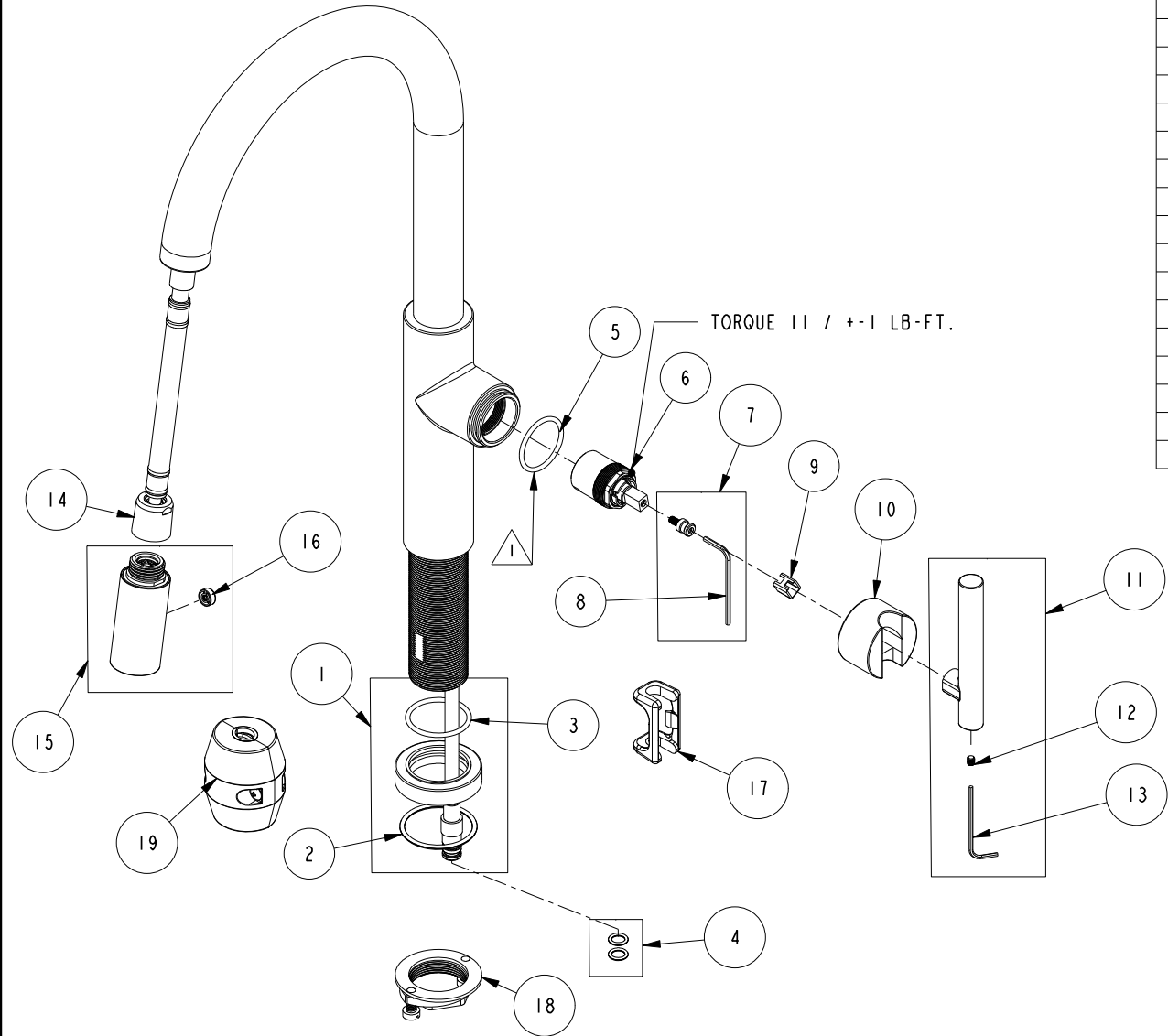


# REPLACEMENT PARTS

NOTE:

 USE SILICON GREASE (PART NUMBER 6727) TO LUBRICATE O-RINGS BEFORE INSTALL.



ITEM	PT/ASSY	SPECIFY FINISH	DESCRIPTION
1	20-390	YES	ESCUTCHEON ASM
2	91763		O-RING, #2- 129, EP, 50 DURO - GREY
3	91227		O-RING, #2-125 EPDM
4	1-399		O-RING KIT FOR SPOUT PEX CONECTION
5	91505		O-RING, #2-123, EPDM, 65-75 DURO
6	1-371		CARTRIDGE
7	1-519		HANDLE ADAPTER SCREW WITH HEX KEY
8	10159		HEX KEY, 3/32 ALLOY STEEL
9	91534		CARTRIDGE STEM INSERT
10	12686	YES	HANDLE HUB, CONTEMP
11	20-389	YES	HANDLE ASM
12	92001		SCRW, 8-32 X 3/16 SKT HD FLT PT SS
13	10192		HEX KEY TOOL, #8 5/64
14	11877A		HOSE, PULLDOWN, GREY
15	3-480	YES	SPRAY HEAD, EAST LINEAR
16	91667		BUTTON
17	91568		RETAINER CLIP
18	1-256		MOUNTING KIT
19	1-286A		WEIGHT

**SGL HL 25MM PULL DOWN - EAST LINEAR**  
**1500-5143**

REV L EN-4766 01/16/24 APPROVED RS

**NEWPORT BRASS.**

t: 949.417.5207 | www.newportbrass.com