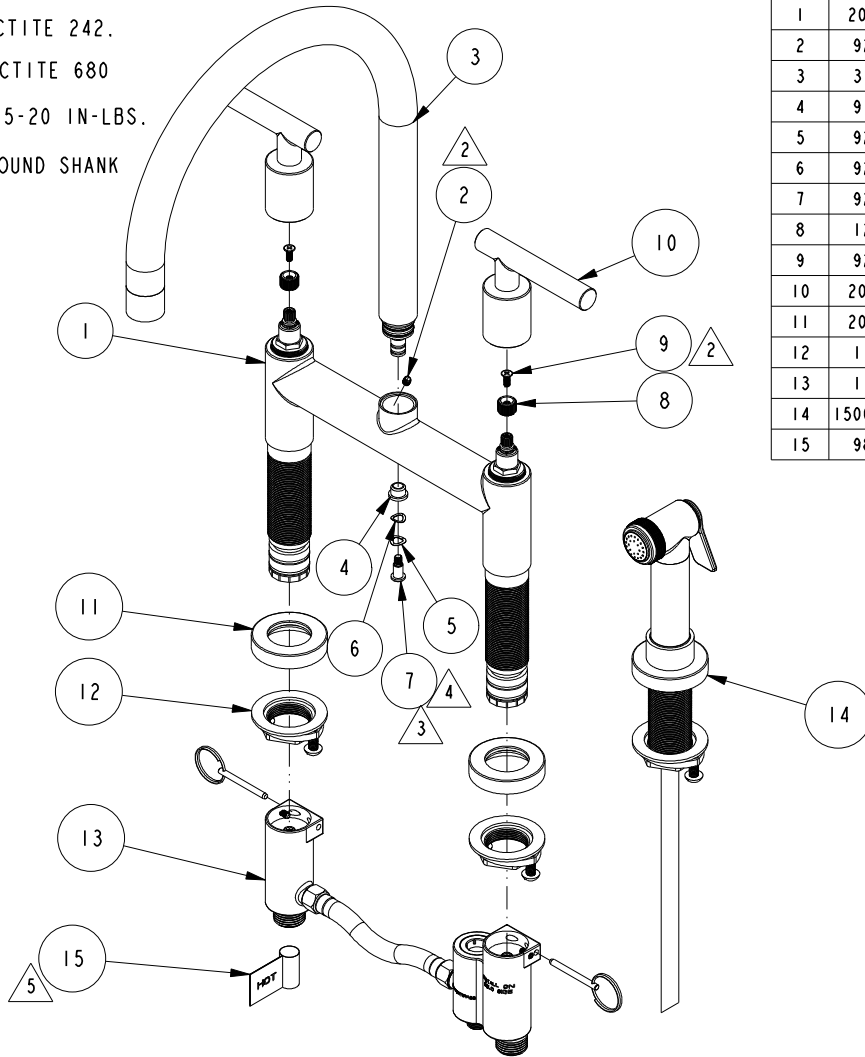


NOTES:

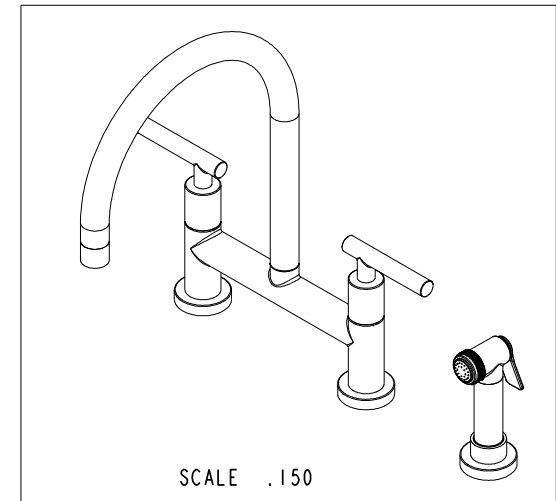
1. TO INSPECT ASSEMBLY, FOLLOW FIRST ARTICLE AND IN PROCESS INSPECTION SHEET.

- 2 APPLY LOCTITE 242.
- 3 APPLY LOCTITE 680
- 4 TORQUE 15-20 IN-LBS.
- 5 WRAP AROUND SHANK



BILL OF MATERIAL (CURRENT LEVEL)

| ITEM | PT/ASSY   | DESCRIPTION  | TYPE     | QTY. |
|------|-----------|--|----------|------|
| 1    | 20-353    | KITCHEN BRIDGE BODY ASM, SIDE SPRAY                  | ASSEMBLY | 1    |
| 2    | 92004     | SCRW, 10-32 X 3/16 SKT HD FLT PT SS                  | PART     | 1    |
| 3    | 3-624     | SPOUT ASSEMBLY                                       | ASSEMBLY | 1    |
| 4    | 91783     | FLANGED SLEEVE BEARING                               | PART     | 1    |
| 5    | 92883     | WSHR, .27 ID X .42 OD X .008 THK, WAVE, SPRING STEEL | PART     | 1    |
| 6    | 92293     | WSHR, .24 ID X .39 OD X .01 THK, WAVE, SPRING STEEL  | PART     | 1    |
| 7    | 92884     | SCRW, 10-32 X 3/8 SKT CAP LOW HD SS                  | PART     | 1    |
| 8    | 12975     | ADAPTER  | PART     | 2    |
| 9    | 92035     | SCRW, M4 X .7 X 10 PHL FLT HD SS                     | PART     | 2    |
| 10   | 20-352    | LEVER HANDLE ASM                                     | ASSEMBLY | 2    |
| 11   | 20-368    | ESCUTCHEON ASM                                       | ASSEMBLY | 2    |
| 12   | 1-393     | 1-1/8 18 UNEF MOUNTING KIT                           | ASSEMBLY | 2    |
| 13   | 1-396     | DIVERTER ASM, BRIDGE FAUCET                          | ASSEMBLY | 1    |
| 14   | 1500-5703 | KITCHEN SPRAY HEAD                                   | ASSEMBLY | 1    |
| 15   | 98044     | LABEL - HOT  | PART     | 1    |



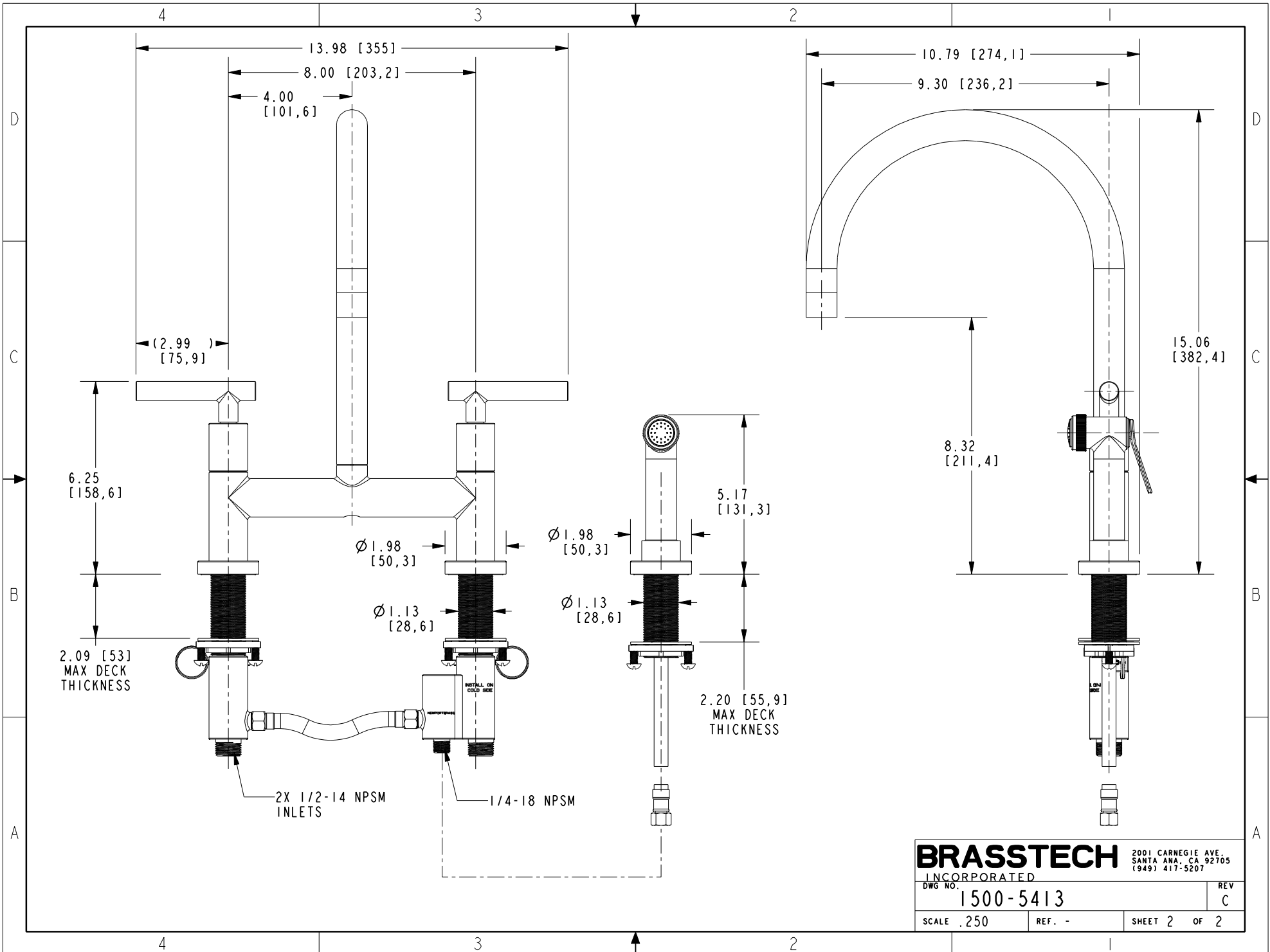
| ZONE | REV | DESCRIPTION | DATE     | APPROVED |
|------|-----|-------------|----------|----------|
| -    | C   | EN-4300f    | 02/24/21 | R. S.    |
| -    | B   | EN-3866     | 06/09/19 | J. M.    |
| -    | A   | EN-3818     | 02/25/19 | J. M.    |
| -    | -   | EN-3364     | 09/25/18 | J. M.    |

COPYRIGHT 2005 BRASSTECH, INC. THESE DRAWINGS AND THE DESIGNS DEPICTED HEREIN ARE THE PROPRIETARY PROPERTY OF BRASSTECH. ANY USE OR REPRODUCTION IS SUBJECT TO THE EXPRESS APPROVAL OF BRASSTECH. UNAUTHORIZED USE IS STRICTLY PROHIBITED. ALL RIGHTS RESERVED.

| TESTING           | -                                | -           | -       |
|-------------------|----------------------------------|-------------|---------|
| ASSEMBLY          | -                                | -           | -       |
| PLATING           | -                                | -           | -       |
| POLISHING         | -                                | NEXT ASSY   | USED ON |
| MACHINING         | -                                | APPLICATION |         |
| TOOLING FIXTURE # | REMOVE ALL BURRS AND SHARP EDGES |             |         |

| UNITS ARE: INCHES [MM]                                  |                 |
|---|-----------------|
| TOLERANCES ARE:   |                 |
| FRACTIONS   | DECIMALS        |
| ±1/16"  | ±.1 [2.5]       |
|   | ±.06 [1.5]      |
| (X.XXX) DENOTES CRITICAL DIMS. ALL THREADS ARE CRITICAL |                 |
| DRAWN   | JIMSON 09/25/18 |
| CHECKED   | J. M. 09/25/18  |
| APPROVED  | J. M. 09/25/18  |

**BRASSTECH** 2001 CARNEGIE AVE. SANTA ANA, CA 92705 (949) 417-5207  
 INCORPORATED  
**KITCHEN BRIDGE FAUCET W/ SPRAY**  
 DWG NO. 1500-5413 REV C  
 SCALE .200 REF. - SHEET 1 OF 2



**BRASSTECH** 2001 CARNEGIE AVE.  
 INCORPORATED SANTA ANA, CA 92705  
 (949) 417-5207

|         |           |      |   |
|---------|-----------|------|---|
| DWG NO. | 1500-5413 | REV  | C |
| SCALE   | .250      | REF. | - |
| SHEET 2 |           | OF 2 |   |